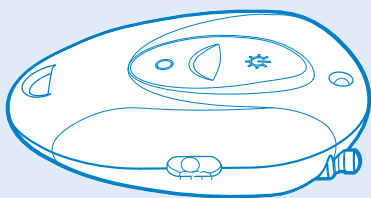


AQR-001 Remote Transmitter



Technical Specifications

- 12V A23 Battery Required
- 50M Transmission Range (approx)
- Frequency: 433.92Mhz
- Modulation: ASK
- IP40 Rated

Introduction

The Aquatran AQR-001 Transmitter is designed to be used with the Aquatran RF Reciever AQR-002.

The Aquatran RF Remote combination provides a convenient method to operate your Aquatran and Aqualux outdoor garden lighting products remotely. With its miniature design the AQR-001 fits easily on a keychain or handbag and allows for remote operation of lights when returning home or simply avoiding having to wire additional switches.

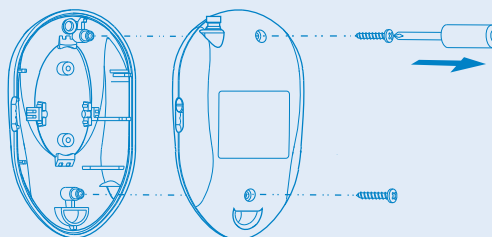
AQR-001 Remote Transmitter

Channel Setup

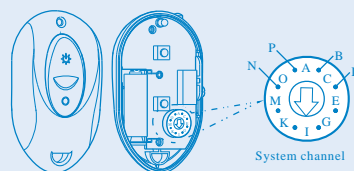
The AQR-001 & AQR-002 units must be set to the same channel.

The AQR-002 Receiver units have been preset to System Channel "1" and Unit Channel "9". Usually this should work fine, however if you experience interference from other devices, you will need to change either the unit channel or system channel.

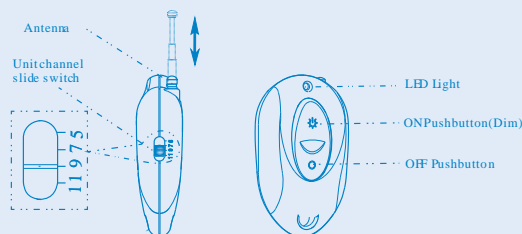
To adjust the system channel on the AQR-001, take off the back cover as shown below.



Adjust the system channel to match the selected system channel on the AQR-002 receiver unit. Refit the back cover.



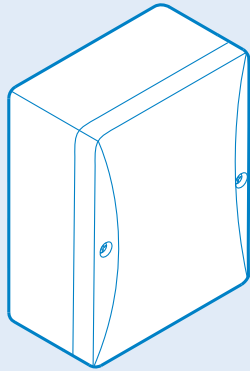
Ensure the unit channel is set accordingly by adjusting the slider on the right hand side of the AQR-001 transmitter unit.



AQR-001 Remote Transmitter

Telectran International Pty Ltd
Unit 4 / 12A Rodborough Road
Frenchs Forest, NSW, 2086
www.telectran.com

AQR-002 Remote Reciever



Technical Specifications

- 230V - 50Hz
- Load 6A Max(Resistive)
- Frequency: 433.92Mhz
- Range 50M Approx
- IP44 Rated

Introduction

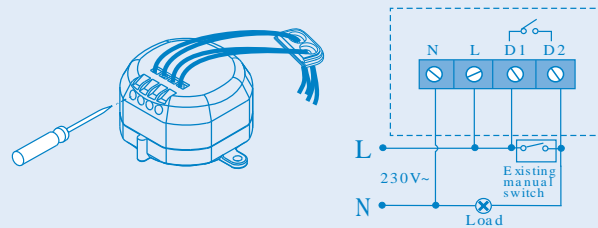
The Aquatran AQR-002 Receiver Module is designed to work with the Aquatran AQR-001 transmitter modules (see over).

The AQR-002 will switch up to 6A of resistive load, allowing you to control a large number of outdoor garden lights with an accompanying Aquatran AQO power supply. With an effective range of around 50M, the Aquatran AQR combination is the easiest and most convenient way to remotely control your garden lights.

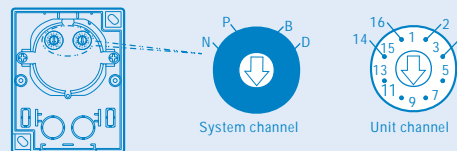
AQR-002 Remote Reciever

Installation Setup

Remove the front cover in order to access the receiver module by unscrewing to two philips head screws. The green module underneath will be exposed. Remove the module itself in order to access the terminal blocks underneath and wire in your source and load according to the wiring diagram below.



Before re-sealing the front cover, ensure that the system and unit channels have been set to match the paired AQR-001 transmitting unit. This is achieved by selecting the appropriate channels on the two dials as shown below.



Once the internal setup has been performed, mount the AQR-002 unit in a semi-ventilated position away from metal objects. Ensure that it is at least 1M off the ground to achieve best performance.

AQR-002 Remote Reciever

Important Note!

To clarify the wiring diagram to the left, you must short terminals “L” and “D1” with a link of wire in order for the receiver to operate correctly.



AQR-002 Remote Reciever