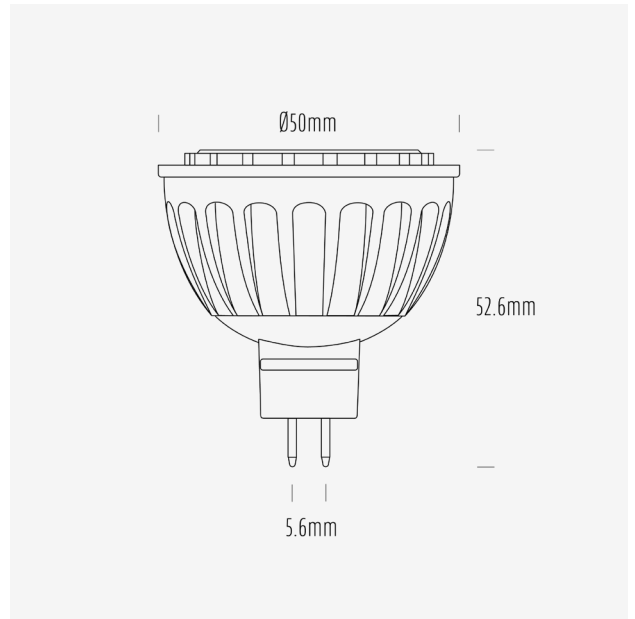


AGL 560 Series

MR16 LED Globes



AGL-560-30X40 / 3000K / MR16 / 40°



Product Data

Product Code	AGL-560-30X40			
Description	Aqualux 560 Series LED Lamp			
Type	MR16 GU5.6			
Construction	Aluminium Heatsink + PMMA Optic			
Warranty	3 Years			

Electrical Data

Input Voltage Range	12~24V AC/DC			
Nominal Voltage	24VDC			
Nominal Power	6W			
Nominal Current	250mA			
Input Voltage	12VDC	12VAC	24VDC	24VAC
Rated Power	6.0	3.9	5.6	5.9
Operating Frequency	-	50Hz	-	50Hz
Max. no. of lamps on AQD24-040	5	-	5	-
Max. no. of lamps on AQD24-100	17	-	17	-
Max. no. of lamps on AQD24-240	-	-	-	-
Dimming Compatibility	Non dimming			
Wiring Scheme	Parallel			
Startup Time	< 0.5s			

Mechanical & Thermal Data

Overall Length	52.6mm
Max Diameter	50mm
Lamp Base	GU5.6
Weight	55g
Operating Temp Range	-20° - 45°
IP Rating	IP20

Photometric Data

Nominal Flux (lm)	560			
Input Voltage	12VDC	12VAC	24VDC	24VAC
Input Power (W)	6.0	3.9	5.6	5.9
Rated Flux (lm)	677	442	685	694
Efficacy (lm/W)	114	114	123	118
CCT	3000K			
CCT Description	Warm White			
CRI (Ra)	82			
CRI (R9)	5			
TM-30 (Rf)	83			
TM-30 (Rg)	97			
SDCM	-			
Peak Intensity (cd)	757			
Nominal Beam Angle	40°			
Measured Beam Angle (FWHM)	42°			

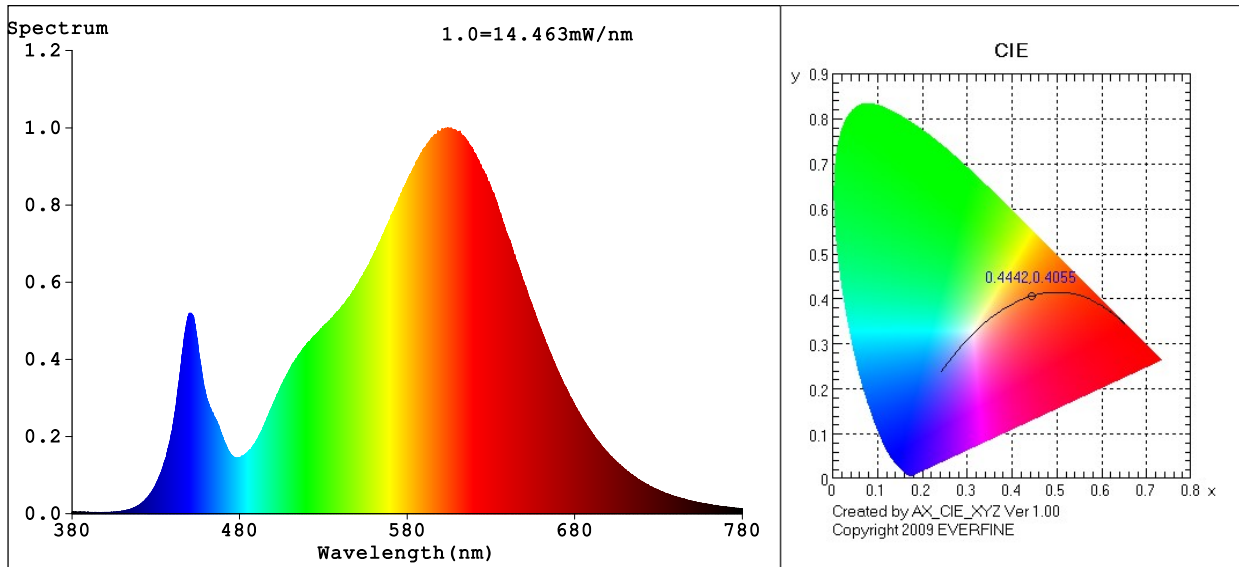
Lifespan Data

L70	15,000h
Switching Cycles	15,000

Compliance Data

EMI	Yes
RCM	N/A
Mercury Content	0mg

Spectrum Test Report



Color Parameters:

Chromaticity Coordinate: $x=0.4442$ $y=0.4055$ / $u'=0.2546$ $v'=0.5230$
 CCT=2894K (Duv=-0.0004) Dominant WL:Ld =583.4nm WL:Lc = --nm Purity=55.0%
 Ratio:R=23.5% G=74.3% B=2.2%; Peak WL:Lp=604.1nm FWHM=124.0nm
 Render Index:Ra=81.7 AvgR=75.7 TM30:Rf=83 Rg=97

R1 =80 R2 =90 R3 =97 R4 =80 R5 =80 R6 =87 R7 =82
 R8 =58 R9 =5 R10=77 R11=79 R12=69 R13=82 R14=99 R15=72

Photo Parameters:

Flux = 693.8 lm Eff. : 117.89 lm/W Fe = 2.108 W

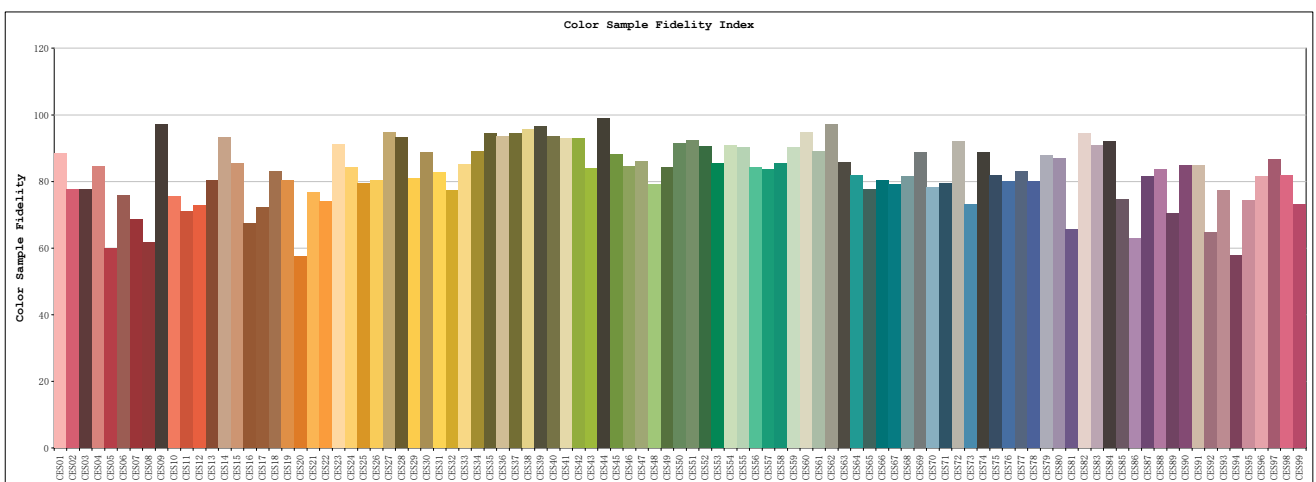
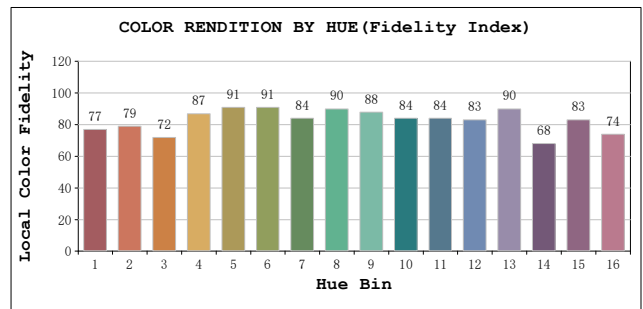
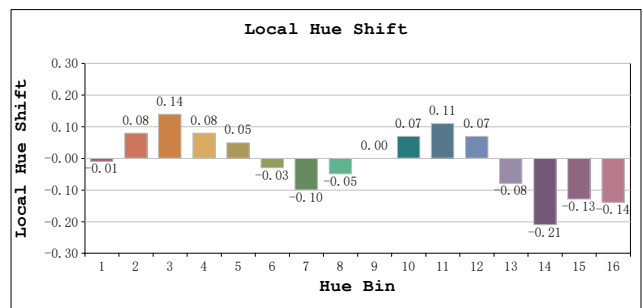
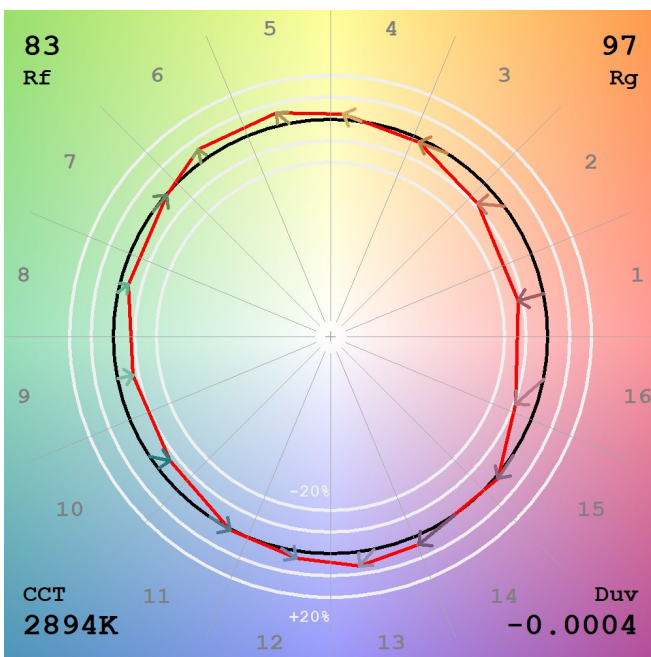
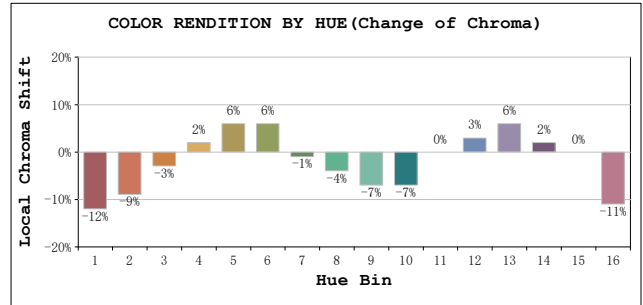
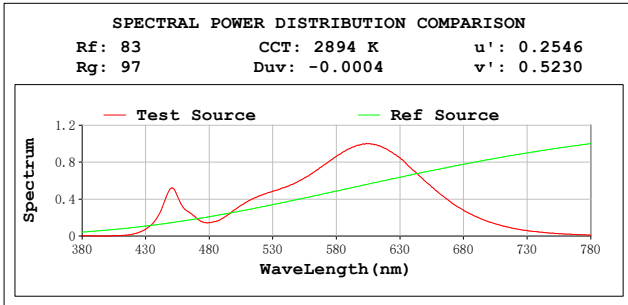
Electrical parameters:

V = 23.948 V I = 0.3706 A P = 5.886 W PF = 0.6632
 LEVEL:OUT WHITE:ANSI_3000K
 Status: Integral T = 175 ms Ip = 44138 (67%)

GBT5702

TM30

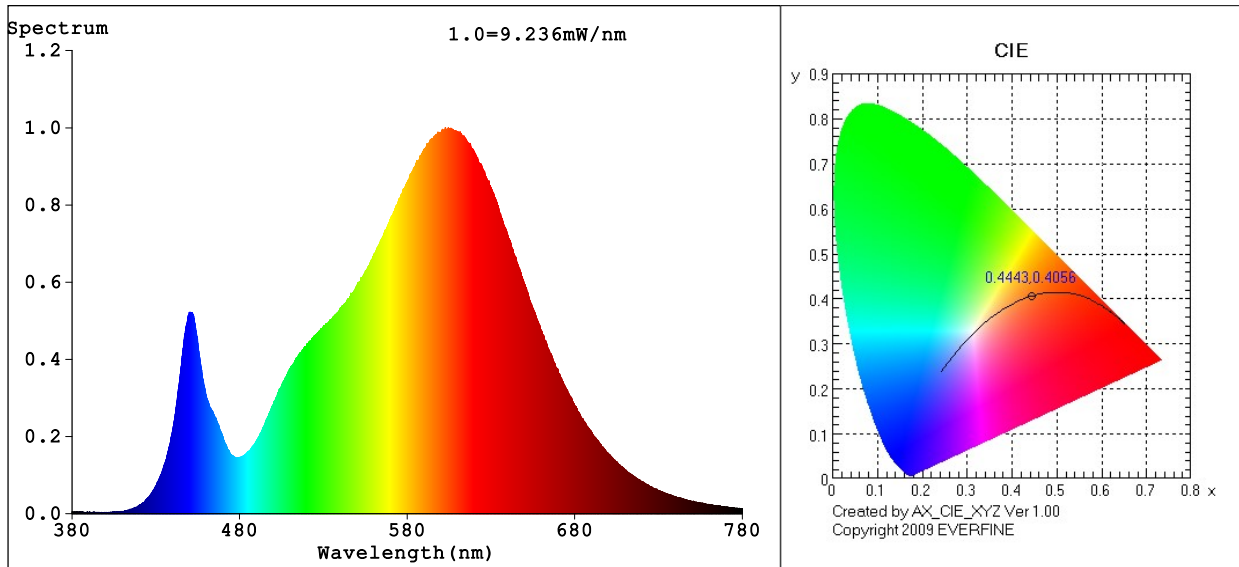
View Angle: 2 Deg



Model:AGL-560-30X40
 Tester:NC
 Temperature:25.3Deg
 Manufacturer:AQUALUX

Number:AGL-560-30X40 24VAC
 Date:2023-10-17 14:36:52
 Humidity:65.0%
 Remarks:24VAC

Spectrum Test Report



Color Parameters:

Chromaticity Coordinate: $x=0.4443$ $y=0.4056$ / $u'=0.2547$ $v'=0.5231$
 CCT=2891K (Duv=-0.0004) Dominant WL:Ld =583.4nm WL:Lc = --nm Purity=55.1%
 Ratio:R=23.5% G=74.2% B=2.2%; Peak WL:Lp=602.8nm FWHM=124.4nm
 Render Index:Ra=81.8 AvgR=75.9 TM30:Rf=83 Rg=97

R1 =80 R2 =90 R3 =97 R4 =80 R5 =80 R6 =88 R7 =83
 R8 =58 R9 =6 R10=77 R11=79 R12=69 R13=82 R14=99 R15=73

Photo Parameters:

Flux = 442.2 lm Eff. : 114.34 lm/W Fe = 1.344 W

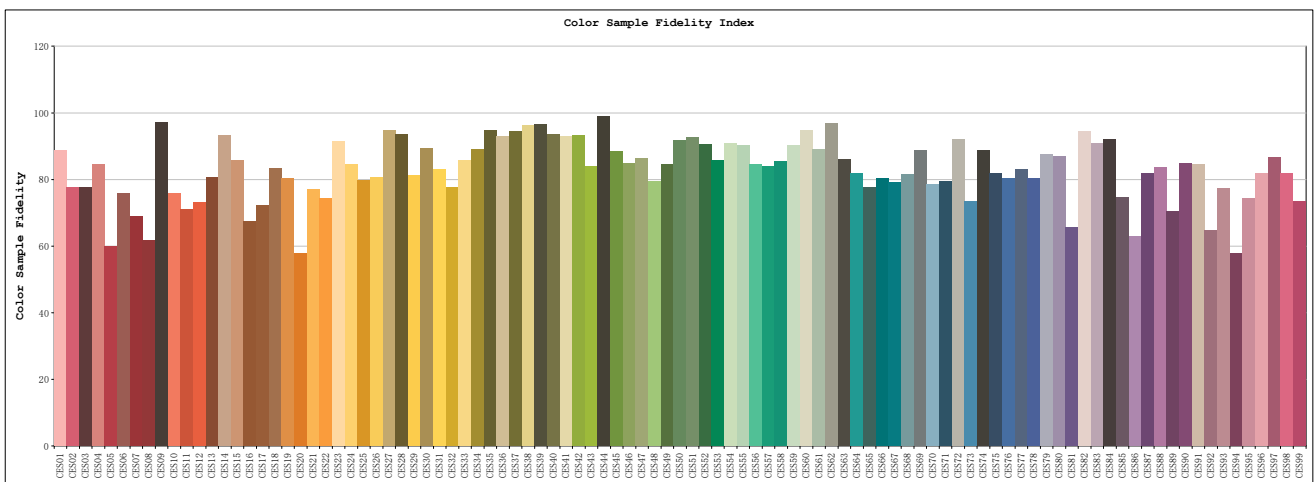
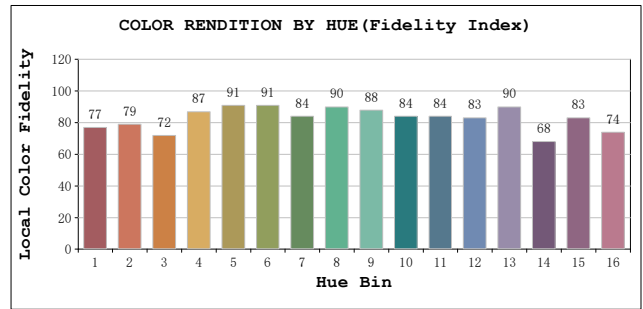
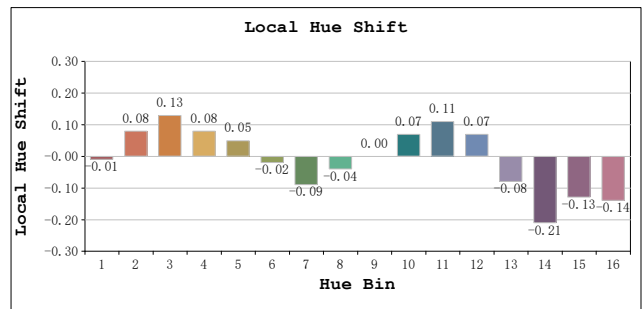
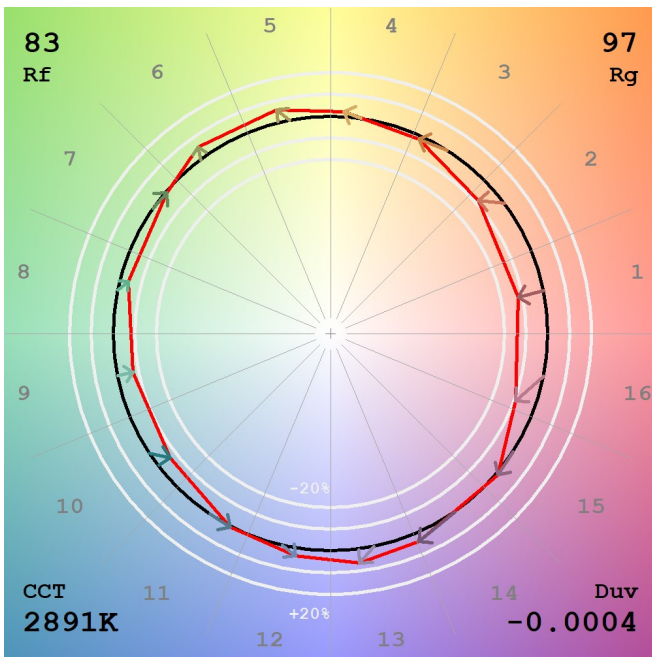
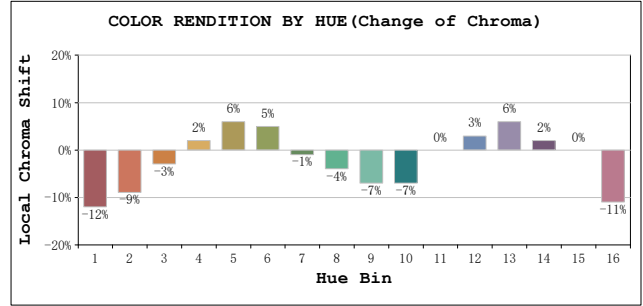
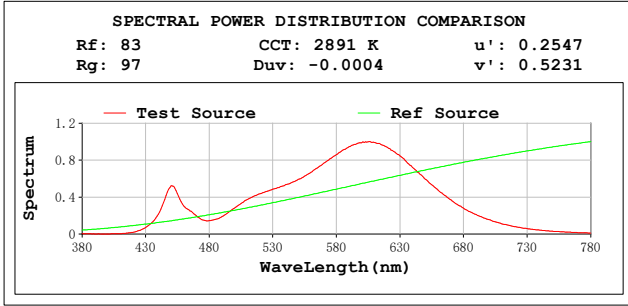
Electrical parameters:

V = 11.974 V I = 0.4159 A P = 3.868 W PF = 0.7767
 LEVEL:OUT WHITE:ANSI_3000K
 Status: Integral T = 317 ms Ip = 51007 (78%)

GBT5702

TM30

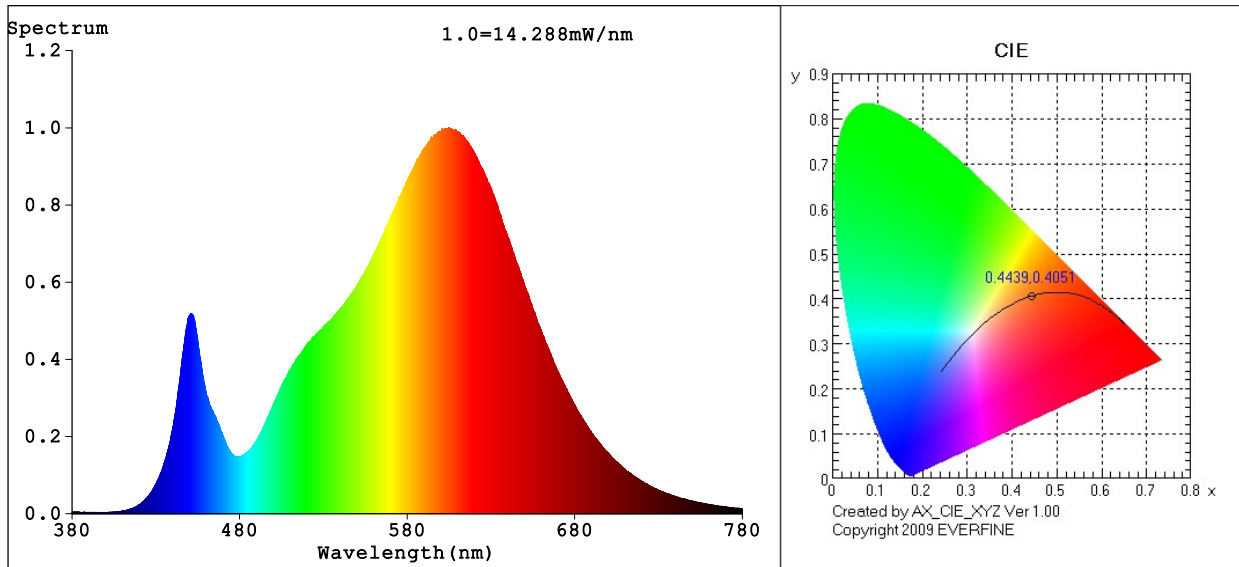
View Angle:2 Deg



Model:AGL-560-30X40
 Tester:NC
 Temperature:25.3Deg
 Manufacturer:AQUALUX

Number:AGL-560-30X40 12VAC
 Date:2023-10-17 14:37:53
 Humidity:65.0%
 Remarks:12VAC

Spectrum Test Report



Color Parameters:

Chromaticity Coordinate: $x=0.4439$ $y=0.4051$ / $u'=0.2546$ $v'=0.5228$
 CCT=2895K (Duv=-0.0005) Dominant WL:Ld =583.5nm WL:Lc = --nm Purity=54.8%
 Ratio:R=23.5% G=74.3% B=2.2%; Peak WL:Lp=605.1nm FWHM=123.6nm
 Render Index:Ra=81.6 AvgR=75.7 TM30:Rf=83 Rg=97

R1 =80 R2 =90 R3 =97 R4 =79 R5 =80 R6 =88 R7 =82
 R8 =58 R9 =5 R10=77 R11=78 R12=69 R13=82 R14=99 R15=72

Photo Parameters:

Flux = 685.0 lm Eff. : 122.89 lm/W Fe = 2.082 W

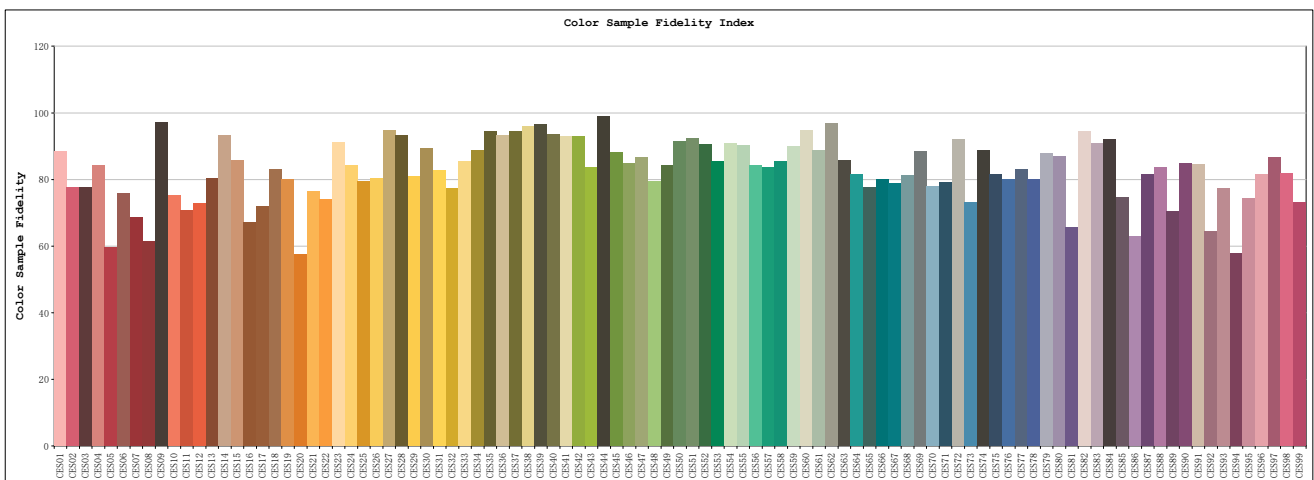
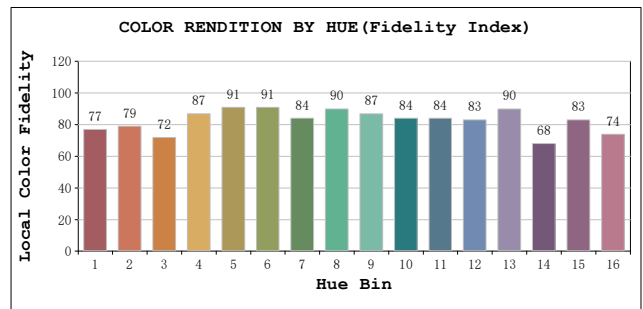
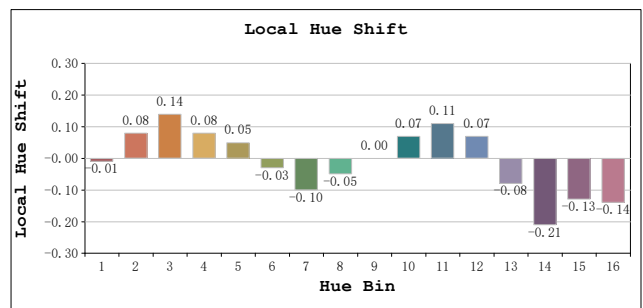
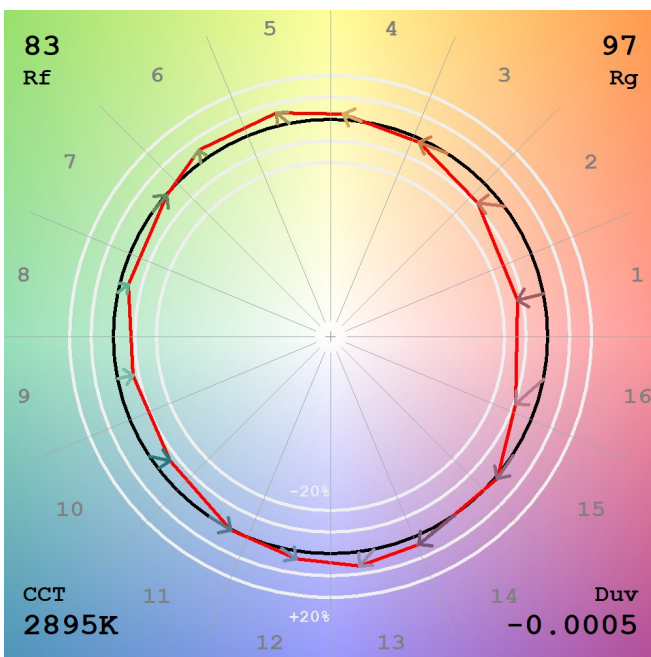
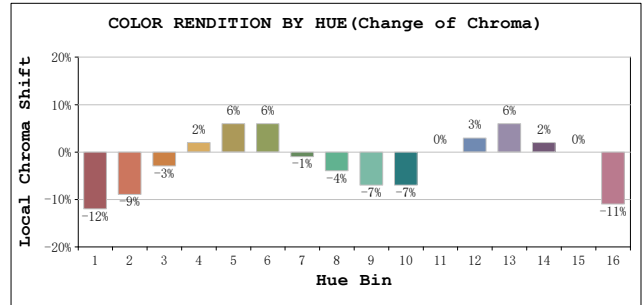
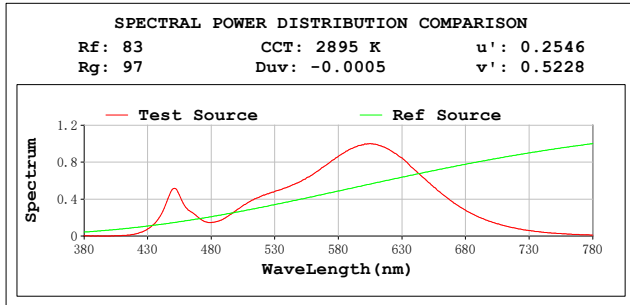
Electrical parameters:

V = 23.983 V I = 0.2324 A P = 5.574 W PF = 1.000
 LEVEL:OUT WHITE:ANSI_3000K
 Status: Integral T = 158 ms Ip = 39389 (60%)

GBT5702

TM30

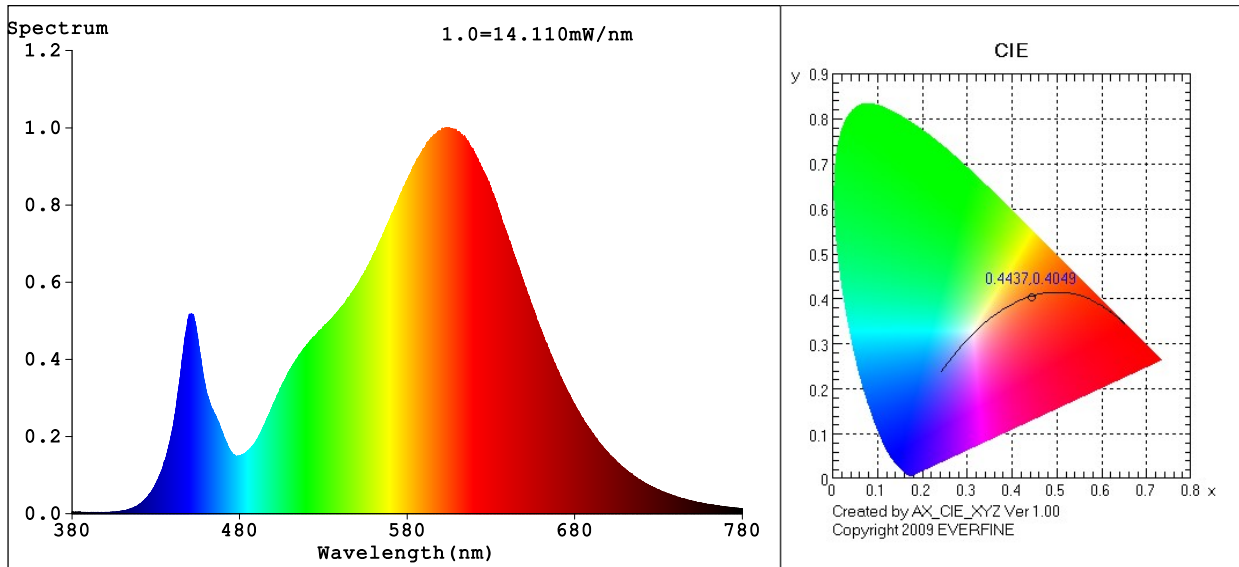
View Angle:2 Deg



Model:AGL-560-30X40
 Tester:NC
 Temperature:25.3Deg
 Manufacturer:AQUALUX

Number:AGL-560-30X40 24VDC
 Date:2023-10-17 14:39:06
 Humidity:65.0%
 Remarks:24VDC

Spectrum Test Report



Color Parameters:

Chromaticity Coordinate: $x=0.4437$ $y=0.4049$ / $u'=0.2546$ $v'=0.5227$
 CCT=2896K (Duv=-0.0006) Dominant WL:Ld =583.5nm WL:Lc = --nm Purity=54.7%
 Ratio:R=23.5% G=74.3% B=2.3%; Peak WL:Lp=603.5nm FWHM=124.0nm
 Render Index:Ra=81.6 AvgR=75.7 TM30:Rf=83 Rg=97

R1 =80 R2 =90 R3 =97 R4 =79 R5 =80 R6 =88 R7 =82
 R8 =58 R9 =5 R10=77 R11=78 R12=69 R13=82 R14=99 R15=72

Photo Parameters:

Flux = 677.1 lm Eff. : 113.65 lm/W Fe = 2.059 W

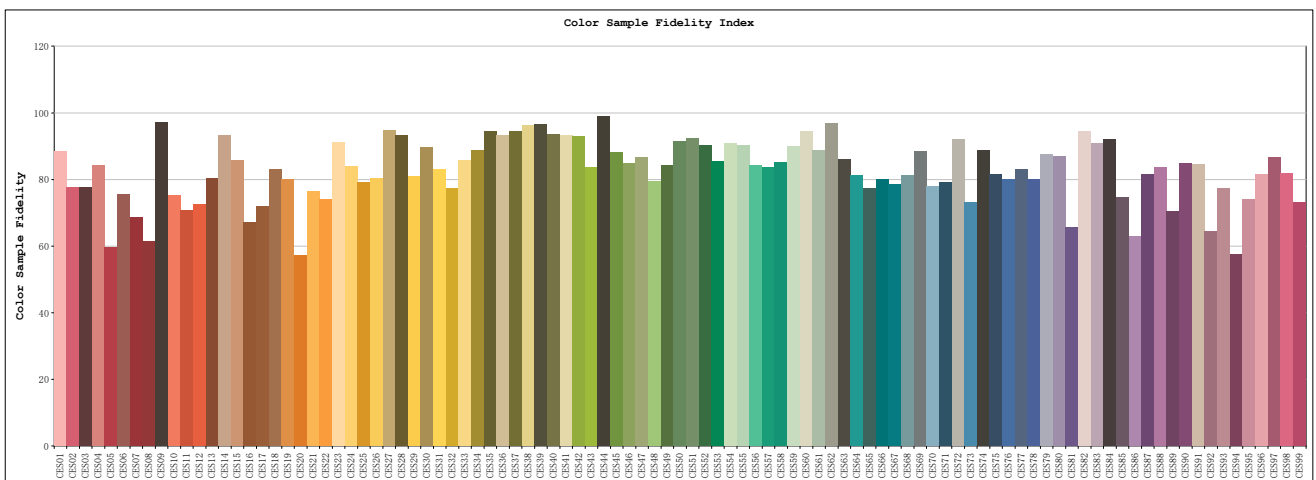
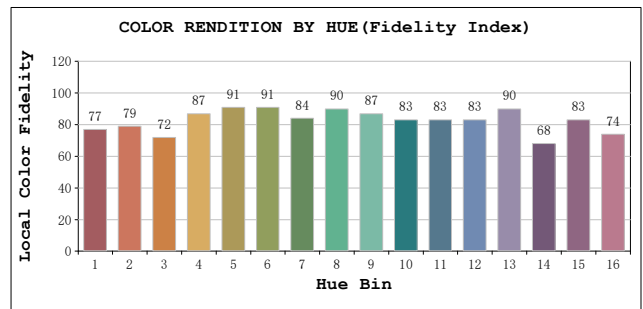
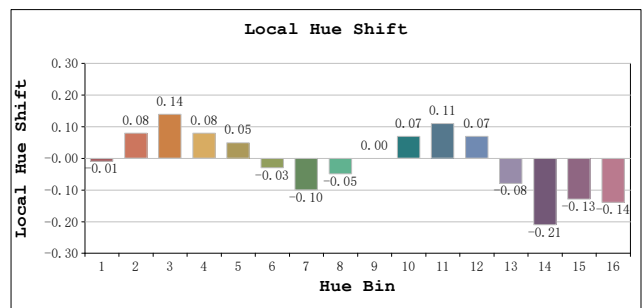
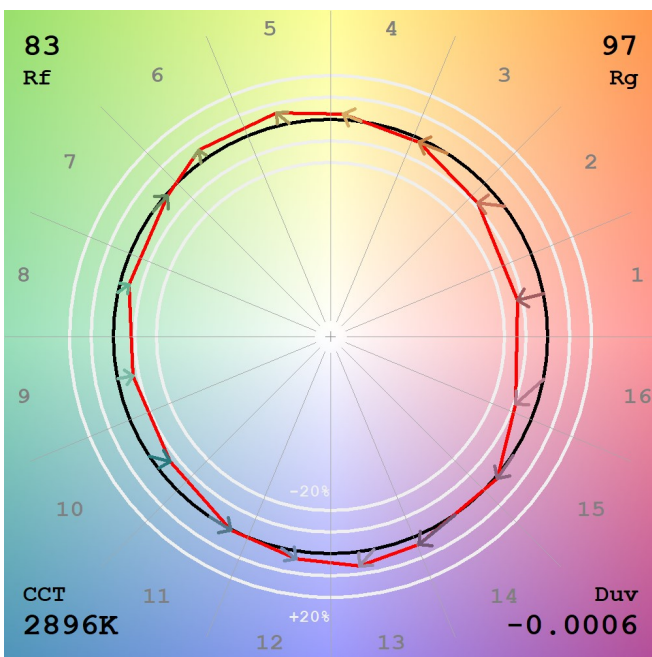
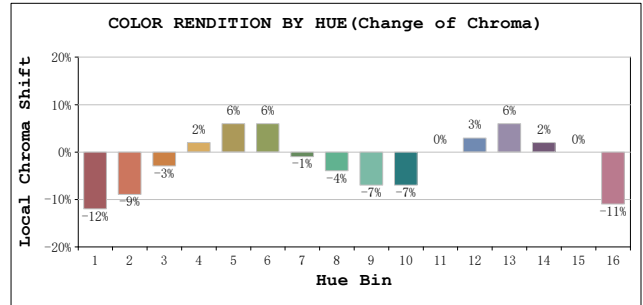
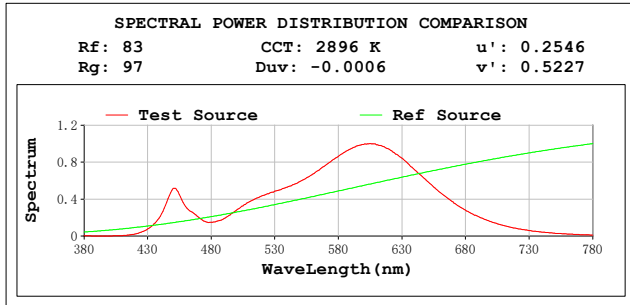
Electrical parameters:

V = 11.961 V I = 0.4981 A P = 5.958 W PF = 1.0000
 LEVEL:OUT WHITE:ANSI_3000K
 Status: Integral T = 158 ms Ip = 38989 (59%)

GBT5702

TM30

View Angle: 2 Deg



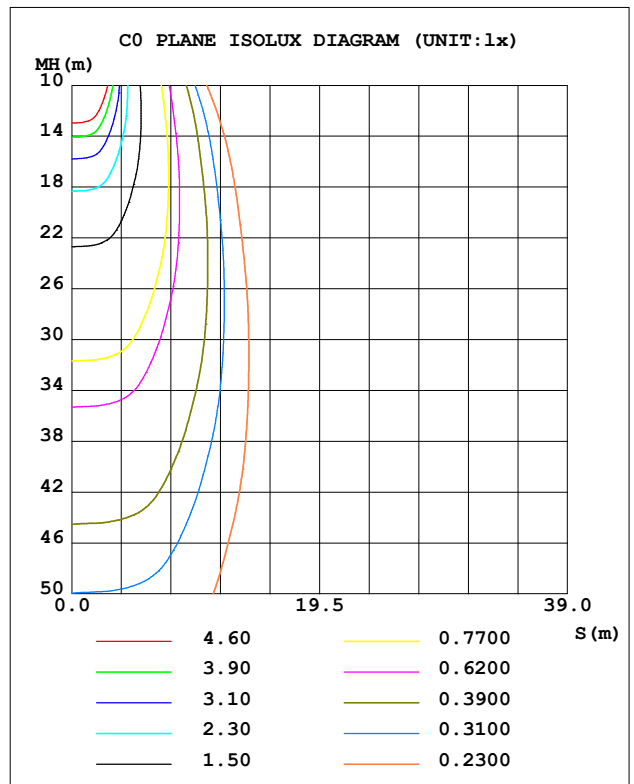
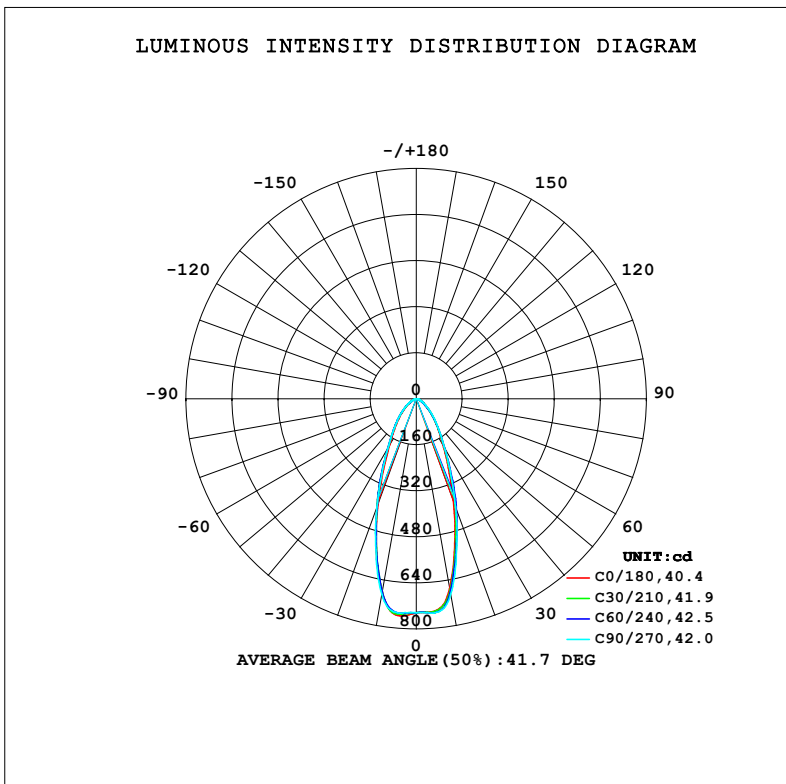
Model: AGL-560-30X40
 Tester: NC
 Temperature: 25.3Deg
 Manufacturer: AQUALUX

Number: AGL-560-30X40 12VDC
 Date: 2023-10-17 14:39:43
 Humidity: 65.0%
 Remarks: 12VDC

LUMINAIRE PHOTOMETRIC TEST REPORT

Test:U:23.801V I:0.2227A P:5.3011W PF:1.0000 Freq:0Hz		
UTHDi:0.00% ITHDi:0.00% KDisp:0 Lamp Flux:556.038x1 lm		
NAME: AGL-560-30X40	TYPE: MR16 GLOBE	WEIGHT: 100G
SPEC.: AGL-560-30X40	DIM.: 50MM	SERIAL No.:
MFR.: AQUALUX	SUR.:	Shielding Angle:

DATA OF LAMP		PHOTOMETRIC DATA				Eff: 104.89 lm/W
MODEL	AGL-560-30X40	I _{max} (cd)	757.0	S/MH (C0/180)	0.67	
NOMINAL POWER (W)	6	LOR (%)	100.0	S/MH (C90/270)	0.68	
RATED VOLTAGE (V)	24	TOTAL FLUX (lm)	556.04	η UP, DN (C0-180)	0.0, 50.1	
NOMINAL FLUX (lm)	556.038	CIE CLASS	DIRECT	η UP, DN (C180-360)	0.0, 49.9	
LAMPS INSIDE	1	η up (%)	0.0	CIBSE SHR NOM	0.50	
TEST VOLTAGE (V)	24	η down (%)	100.0	CIBSE SHR MAX	0.70	



C Range: 0 - 180DEG
 C Interval: 15.0DEG
 Test Speed: MEDIUM
 Temperature: 20°C
 Operators: NICK
 Test Date: 16 October 2023

γ Range: 0 - 90DEG
 γ Interval: 0.5DEG
 Test System: EVERFINE GO-SPEX500_V1 SYSTEM V2.00.473
 Humidity: 65.0%
 Test Distance: 3.100m [K=1.0000]
 Remarks: AGL-560-30X40
 4000K / 40D / 6W / 550LM

ZONAL FLUX DIAGRAM

ZONAL FLUX DIAGRAM:

γ	C0	C45	C90	C135	C180	C225	C270	C315	γ	∅ zone	∅ total	%lum, lamp
10	669.4	681.7	690.5	682.0	682.3	682.0	690.5	681.7	0- 10	69.50	69.50	12.5,12.5
20	377.9	408.8	400.2	401.0	389.5	401.0	400.2	408.8	10- 20	148.2	217.7	39.2,39.2
30	187.2	199.7	197.0	198.5	185.9	198.5	197.0	199.7	20- 30	130.2	347.9	62.6,62.6
40	102.8	104.6	106.9	110.1	100.5	110.1	106.9	104.6	30- 40	89.87	437.8	78.7,78.7
50	55.45	51.45	57.20	57.07	53.22	57.07	57.20	51.45	40- 50	59.91	497.7	89.5,89.5
60	27.34	23.64	28.08	26.42	25.98	26.42	28.08	23.64	50- 60	34.62	532.3	95.7,95.7
70	9.658	8.459	10.34	9.692	9.669	9.692	10.34	8.459	60- 70	16.88	549.2	98.8,98.8
80	2.330	2.436	2.562	2.763	2.580	2.763	2.562	2.436	70- 80	5.439	554.7	99.8,99.8
90	0.0057	0.0016	0.0044	0.0036	0.0016	0.0036	0.0044	0.0016	80- 90	1.382	556.0	100,100
100									90-100			
110									100-110			
120									110-120			
130									120-130			
140									130-140			
150									140-150			
160									150-160			
170									160-170			
180									170-180			
DEG	LUMINOUS INTENSITY:cd									UNIT:lm		

Conical surface Flux(90deg): 471.29 lm

%lum = 84.8%

%lamp = 84.8%

Conical surface Flux(130deg): 542.68 lm

%lum = 97.6%

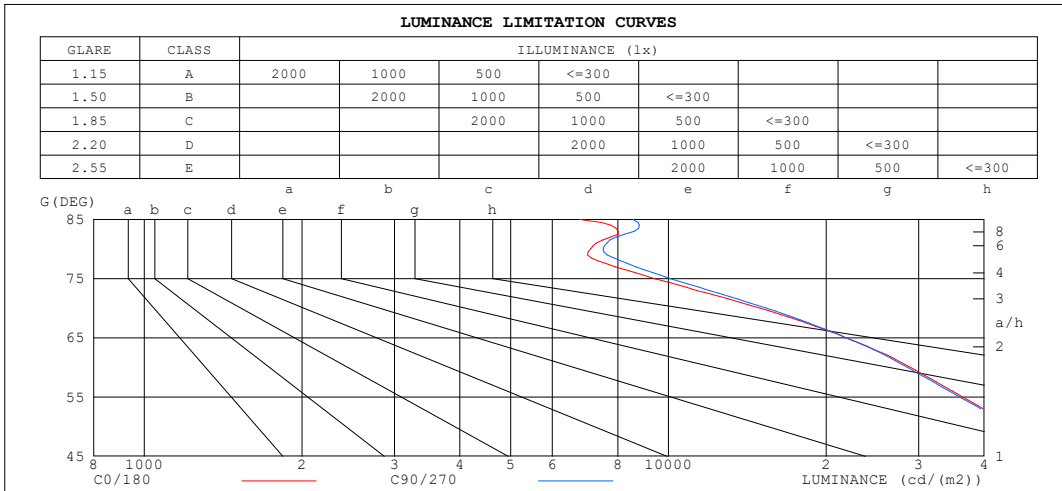
%lamp = 97.6%

C Range: 0 - 180DEG
 C Interval: 15.0DEG
 Test Speed: MEDIUM
 Temperature:20°C
 Operators:NICK
 Test Date:16 October 2023

γ Range: 0 - 90DEG
 γ Interval: 0.5DEG
 Test System:EVERFINE GO-SPEX500_V1 SYSTEM V2.00.473
 Humidity:65.0%
 Test Distance:3.100m [K=1.0000]
 Remarks: AGL-560-30X40
 4000K / 40D / 6W / 550LM

LUMINANCE LIMITATION CURVES

Test:U:23.801V I:0.2227A P:5.3011W PF:1.0000 Freq:0Hz UTHDi:0.00% ITHDi:0.00% KDisp:0 Lamp Flux:556.038x1 lm		
NAME: AGL-560-30X40	TYPE: MR16 GLOBE	WEIGHT: 100G
SPEC.: AGL-560-30X40	DIM.: 50MM	SERIAL No.:
MFR.: AQUALUX	SUR.:	Shielding Angle:



LUMINANCE cd/(m2)		
G (DEG)	C0/180	C90/270
85	6774	8549
80	7104	7499
75	9408	10082
70	14949	15370
65	21808	21808
60	28943	28546
55	36399	35932
50	45667	45226
45	57132	56905

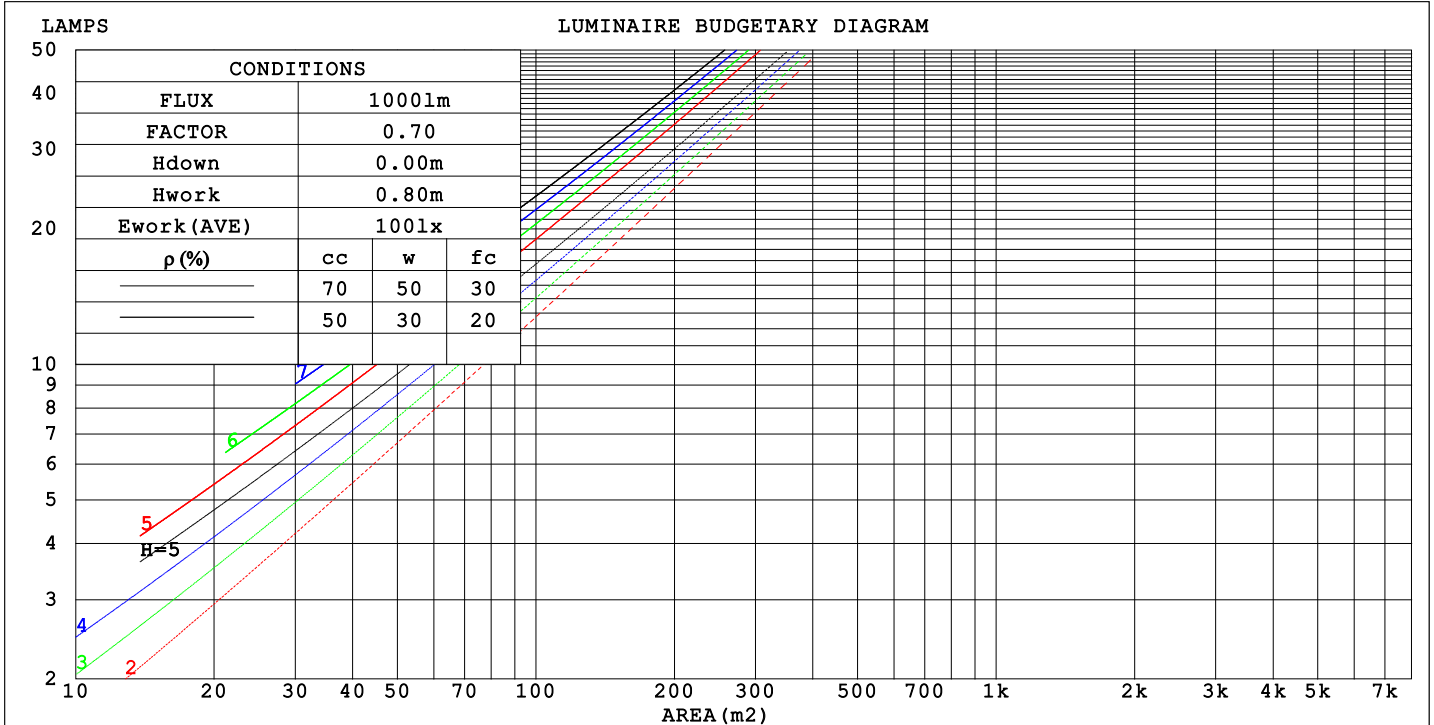
C Range: 0 - 180DEG
 C Interval: 15.0DEG
 Test Speed: MEDIUM
 Temperature: 20°C
 Operator: NICK
 Test Date: 16 October 2023

γ Range: 0 - 90DEG
 γ Interval: 0.5DEG
 Test System: EVERFINE GO-SPEX500_V1 SYSTEM V2.00.473
 Humidity: 65.0%
 Test Distance: 3.100m [K=1.0000]
 Remarks: AGL-560-30X40
 4000K / 40D / 6W / 550LM

CU AND LUMINAIRE BUDGETARY ESTIMATE DIAGRAM

Test:U:23.801V I:0.2227A P:5.3011W PF:1.0000 Freq:0Hz		
UTHdi:0.00% ITHdi:0.00% KDisp:0 Lamp Flux:556.038x1 lm		
NAME: AGL-560-30X40	TYPE: MR16 GLOBE	WEIGHT: 100G
SPEC.: AGL-560-30X40	DIM.: 50MM	SERIAL No.:
MFR.: AQUALUX	SUR.:	Shielding Angle:

ρ_{cc}	80%			70%			50%			30%			10%			0
ρ_w	50%	30%	10%	50%	30%	10%	50%	30%	10%	50%	30%	10%	50%	30%	10%	0
ρ_{fc}	20%			20%			20%			20%			20%			0
RCR	RCR:Room Cavity Ratio						Coefficients of Utilization (CU)									
0.0	1.19	1.19	1.19	1.16	1.16	1.16	1.11	1.11	1.11	1.06	1.06	1.06	1.02	1.02	1.02	1.00
1.0	1.10	1.07	1.04	1.07	1.05	1.03	1.03	1.01	.99	.90	.98	.96	.96	.95	.94	.92
2.0	1.01	.96	.93	.99	.95	.91	.96	.92	.89	.93	.90	.88	.90	.88	.86	.84
3.0	.93	.88	.83	.92	.87	.82	.89	.85	.81	.86	.83	.80	.84	.81	.79	.77
4.0	.86	.80	.76	.85	.79	.75	.83	.78	.74	.81	.77	.73	.79	.75	.72	.71
5.0	.80	.74	.69	.79	.73	.69	.78	.72	.68	.76	.71	.68	.74	.70	.67	.65
6.0	.75	.69	.64	.74	.68	.64	.73	.67	.63	.71	.66	.63	.70	.66	.62	.61
7.0	.70	.64	.59	.70	.64	.59	.68	.63	.59	.67	.62	.59	.66	.62	.58	.57
8.0	.66	.60	.56	.66	.60	.55	.65	.59	.55	.63	.59	.55	.62	.58	.55	.53
9.0	.63	.56	.52	.62	.56	.52	.61	.56	.52	.60	.55	.52	.59	.55	.51	.50
10.0	.59	.53	.49	.59	.53	.49	.58	.53	.49	.57	.52	.49	.56	.52	.49	.47



C Range: 0 - 180DEG
 C Interval: 15.0DEG
 Test Speed: MEDIUM
 Temperature: 20°C
 Operators: NICK
 Test Date: 16 October 2023

γ Range: 0 - 90DEG
 γ Interval: 0.5DEG
 Test System: EVERFINE GO-SPEX500_V1 SYSTEM V2.00.473
 Humidity: 65.0%
 Test Distance: 3.100m [K=1.0000]
 Remarks: AGL-560-30X40
 4000K / 40D / 6W / 550LM

WEC AND CCEC

Test:U:23.801V I:0.2227A P:5.3011W PF:1.0000 Freq:0Hz		
UTHdi:0.00% ITHdi:0.00% KDisp:0 Lamp Flux:556.038x1 lm		
NAME: AGL-560-30X40	TYPE: MR16 GLOBE	WEIGHT: 100G
SPEC.: AGL-560-30X40	DIM.: 50MM	SERIAL No.:
MFR.: AQUALUX	SUR.:	Shielding Angle:

ρcc	80%			70%			50%			30%			10%			0
ρw	50%	30%	10%	50%	30%	10%	50%	30%	10%	50%	30%	10%	50%	30%	10%	0
ρfc	20%			20%			20%			20%			20%			0
RCR	RCR:Room Cavity Ratio						Wall Exitance Coefficients (WEC)									
0.0																
1.0	.200	.114	.036	.193	.110	.035	.181	.104	.033	.169	.097	.031	.158	.092	.030	
2.0	.192	.105	.032	.186	.103	.032	.175	.098	.030	.165	.093	.029	.156	.088	.028	
3.0	.182	.097	.029	.177	.095	.029	.168	.091	.028	.159	.087	.027	.151	.084	.026	
4.0	.172	.089	.026	.168	.088	.026	.160	.085	.025	.152	.082	.025	.145	.079	.024	
5.0	.162	.083	.024	.159	.081	.024	.152	.079	.023	.145	.077	.023	.139	.074	.022	
6.0	.154	.077	.022	.150	.076	.022	.144	.074	.022	.138	.072	.021	.133	.070	.021	
7.0	.146	.072	.020	.143	.071	.020	.137	.069	.020	.132	.068	.020	.127	.066	.019	
8.0	.138	.068	.019	.136	.067	.019	.131	.065	.019	.126	.064	.018	.122	.063	.018	
9.0	.131	.064	.018	.129	.063	.018	.125	.062	.017	.121	.060	.017	.117	.059	.017	
10.0	.125	.060	.017	.123	.060	.017	.119	.058	.016	.116	.057	.016	.112	.056	.016	

ρcc	80%			70%			50%			30%			10%			0
ρw	50%	30%	10%	50%	30%	10%	50%	30%	10%	50%	30%	10%	50%	30%	10%	0
ρfc	20%			20%			20%			20%			20%			0
RCR	RCR:Room Cavity Ratio						Ceiling Cavity Exitance Coefficients (CCEC)									
0.0	.190	.190	.190	.163	.163	.163	.111	.111	.111	.064	.064	.064	.020	.020	.020	
1.0	.173	.157	.143	.148	.135	.123	.101	.093	.085	.058	.054	.050	.019	.017	.016	
2.0	.159	.132	.110	.136	.114	.095	.093	.079	.066	.054	.046	.039	.017	.015	.013	
3.0	.148	.114	.087	.126	.098	.075	.087	.068	.053	.050	.040	.031	.016	.013	.010	
4.0	.138	.099	.070	.118	.086	.061	.081	.060	.043	.047	.035	.025	.015	.011	.008	
5.0	.129	.088	.057	.111	.076	.050	.077	.053	.035	.044	.031	.021	.014	.010	.007	
6.0	.122	.079	.048	.105	.068	.042	.072	.048	.029	.042	.028	.017	.014	.009	.006	
7.0	.115	.071	.040	.099	.062	.035	.069	.043	.025	.040	.026	.015	.013	.008	.005	
8.0	.109	.065	.035	.094	.057	.030	.065	.040	.021	.038	.023	.013	.012	.008	.004	
9.0	.104	.060	.030	.090	.052	.026	.062	.037	.019	.036	.022	.011	.012	.007	.004	
10.0	.099	.056	.027	.085	.048	.023	.059	.034	.016	.035	.020	.010	.011	.007	.003	

C Range: 0 - 180DEG
 C Interval: 15.0DEG
 Test Speed: MEDIUM
 Temperature:20°C
 Operators:NICK
 Test Date:16 October 2023

γ Range: 0 - 90DEG
 γ Interval: 0.5DEG
 Test System:EVERFINE GO-SPEX500_V1 SYSTEM V2.00.473
 Humidity:65.0%
 Test Distance:3.100m [K=1.0000]
 Remarks: AGL-560-30X40
 4000K / 40D / 6W / 550LM

UGR(Unified Glare Rating) Table

Test:U:23.801V I:0.2227A P:5.3011W PF:1.0000 Freq:0Hz										
UTHDi:0.00% ITHDi:0.00% KDisp:0 Lamp Flux:556.038x1 lm										
NAME: AGL-560-30X40					TYPE: MR16 GLOBE			WEIGHT: 100G		
SPEC.: AGL-560-30X40					DIM.: 50MM			SERIAL No.:		
MFR.: AQUALUX					SUR.:			Shielding Angle:		
ceiling/cavity	0.7	0.7	0.5	0.5	0.3	0.7	0.7	0.5	0.5	0.3
walls	0.5	0.3	0.5	0.3	0.3	0.5	0.3	0.5	0.3	0.3
working plane	0.2	0.2	0.2	0.2	0.2	0.2	0.2	0.2	0.2	0.2
Room dimensions	Viewed crosswise					Viewed endwise				
x = 2H y = 2H	24.9	25.9	25.1	26.1	26.3	24.8	25.9	25.1	26.1	26.2
3H	25.2	26.2	25.4	26.4	26.6	25.1	26.1	25.4	26.3	26.5
4H	25.2	26.1	25.5	26.3	26.6	25.2	26.1	25.4	26.3	26.5
6H	25.2	26.0	25.5	26.3	26.5	25.1	26.0	25.4	26.2	26.5
8H	25.1	26.0	25.5	26.2	26.5	25.1	25.9	25.4	26.2	26.5
12H	25.1	25.9	25.5	26.2	26.5	25.1	25.9	25.4	26.2	26.4
4H 2H	25.0	25.9	25.2	26.1	26.3	24.9	25.8	25.2	26.0	26.3
3H	25.3	26.1	25.6	26.4	26.7	25.3	26.1	25.6	26.3	26.6
4H	25.4	26.1	25.7	26.4	26.7	25.3	26.0	25.7	26.3	26.7
6H	25.4	26.0	25.7	26.3	26.7	25.3	26.0	25.7	26.3	26.7
8H	25.4	25.9	25.8	26.3	26.7	25.3	25.9	25.7	26.3	26.6
12H	25.4	25.9	25.8	26.3	26.7	25.3	25.9	25.8	26.3	26.6
8H 4H	25.3	25.9	25.7	26.2	26.6	25.3	25.8	25.7	26.2	26.6
6H	25.3	25.8	25.8	26.2	26.6	25.3	25.8	25.7	26.2	26.6
8H	25.3	25.8	25.8	26.2	26.6	25.3	25.8	25.8	26.2	26.6
12H	25.4	25.7	25.8	26.2	26.6	25.4	25.7	25.8	26.2	26.6
12H 4H	25.3	25.8	25.7	26.2	26.6	25.2	25.8	25.6	26.1	26.5
6H	25.3	25.7	25.7	26.1	26.6	25.3	25.7	25.7	26.1	26.6
8H	25.3	25.7	25.8	26.1	26.6	25.3	25.7	25.8	26.1	26.6
Variations with the observer position at spacings(CIE Pub.117):										
S = 1.0H	+ 1.0 / - 1.3					+ 1.0 / - 1.3				
1.5H	+ 1.0 / - 1.1					+ 1.1 / - 1.1				
2.0H	+ 2.1 / - 2.0					+ 2.1 / - 2.0				

CIE Pub.117, 556.0 lm Total Lamp Luminous Flux Correct (8log(F/F0) = -2.0)
 Area: 0.001963 m2

C Range: 0 - 180DEG
 C Interval: 15.0DEG
 Test Speed: MEDIUM
 Temperature:20°C
 Operators:NICK
 Test Date:16 October 2023

γ Range: 0 - 90DEG
 γ Interval: 0.5DEG
 Test System:EVERFINE GO-SPEX500_V1 SYSTEM V2.00.473
 Humidity:65.0%
 Test Distance:3.100m [K=1.0000]
 Remarks: AGL-560-30X40
 4000K / 40D / 6W / 550LM

UTILIZATION FACTORS TABLE

Test:U:23.801V I:0.2227A P:5.3011W PF:1.0000 Freq:0Hz		
UTHDi:0.00% ITHDi:0.00% KDisp:0 Lamp Flux:556.038x1 lm		
NAME: AGL-560-30X40	TYPE: MR16 GLOBE	WEIGHT: 100G
SPEC.: AGL-560-30X40	DIM.: 50MM	SERIAL No.:
MFR.: AQUALUX	SUR.:	Shielding Angle:

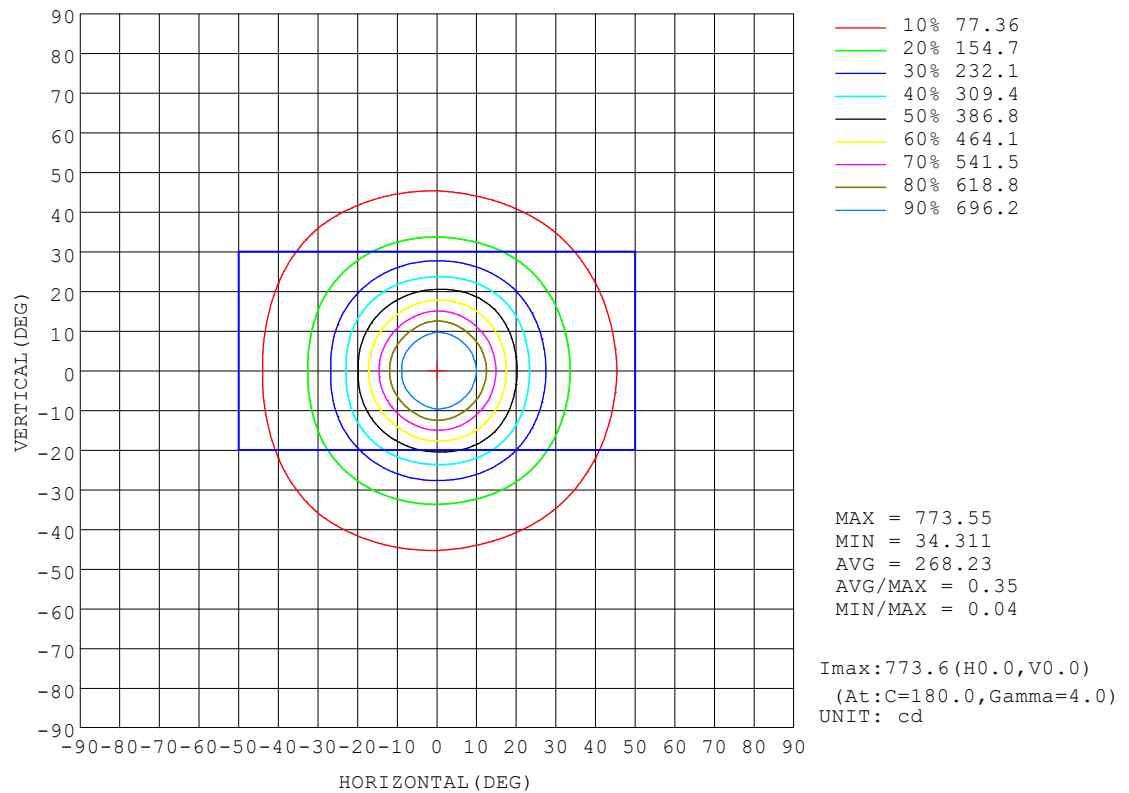
REFLECTANCE										
Ceiling	0.8	0.8	0.8	0.7	0.7	0.7	0.5	0.5	0.5	0
Walls	0.7	0.5	0.3	0.7	0.5	0.3	0.7	0.5	0.3	0
Working plane	0.2	0.2	0.2	0.2	0.2	0.2	0.2	0.2	0.2	0
ROOM INDEX	UTILIZATION FACTORS (PERCENT) k(RI) x RCR = 5									
k = 0.60	78	70	65	77	70	65	77	69	65	61
0.80	87	79	74	86	79	74	85	78	74	69
1.00	93	86	81	92	85	81	90	85	80	75
1.25	98	91	87	97	91	86	95	89	86	81
1.50	101	95	91	100	94	90	97	93	89	84
2.00	105	100	96	104	99	95	101	97	94	88
2.50	107	103	99	106	101	98	102	99	96	90
3.00	109	105	102	108	104	101	104	101	99	92
4.00	112	108	106	110	107	104	106	104	102	94
5.00	113	110	108	111	109	107	107	105	103	95
ROOM INDEX	UF(total)									Direct
According to DIN EN 13032-2 2004			Suspended				SHRNOM = 1.25			

C Range: 0 - 180DEG
 C Interval: 15.0DEG
 Test Speed: MEDIUM
 Temperature:20°C
 Operators:NICK
 Test Date:16 October 2023

γ Range: 0 - 90DEG
 γ Interval: 0.5DEG
 Test System:EVERFINE GO-SPEX500_V1 SYSTEM V2.00.473
 Humidity:65.0%
 Test Distance:3.100m [K=1.0000]
 Remarks: AGL-560-30X40
 4000K / 40D / 6W / 550LM

ISOCANDELA DIAGRAM

Test:U:23.801V I:0.2227A P:5.3011W PF:1.0000 Freq:0Hz UTHDi:0.00% ITHDi:0.00% KDisp:0 Lamp Flux:556.038x1 lm		
NAME: AGL-560-30X40	TYPE: MR16 GLOBE	WEIGHT: 100G
SPEC.: AGL-560-30X40	DIM.: 50MM	SERIAL No.:
MFR.: AQUALUX	SUR.:	Shielding Angle:

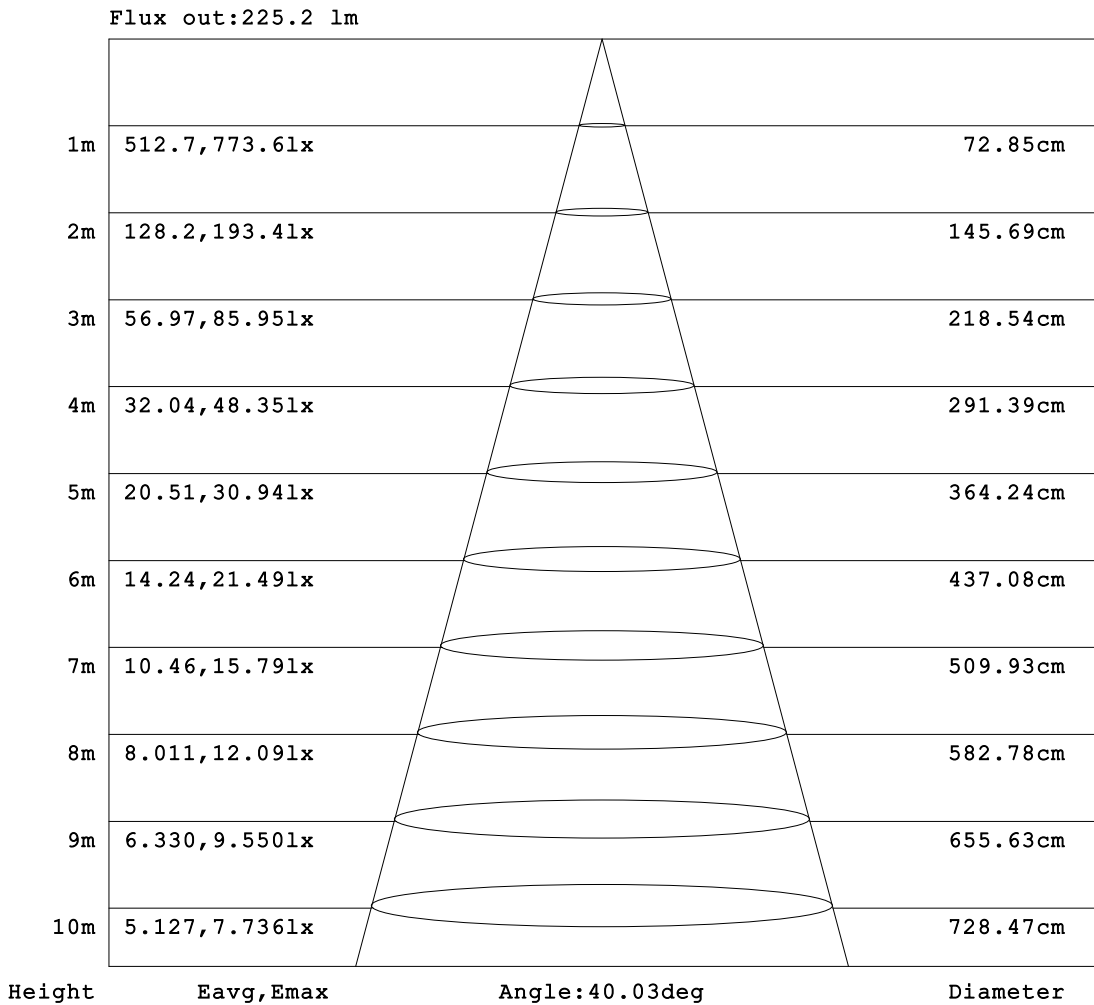


C Range: 0 - 180DEG
 C Interval: 15.0DEG
 Test Speed: MEDIUM
 Temperature:20°C
 Operators:NICK
 Test Date:16 October 2023

γ Range: 0 - 90DEG
 γ Interval: 0.5DEG
 Test System:EVERFINE GO-SPEX500_V1 SYSTEM V2.00.473
 Humidity:65.0%
 Test Distance:3.100m [K=1.0000]
 Remarks: AGL-560-30X40
 4000K / 40D / 6W / 550LM

AAI Figure

Test:U:23.801V I:0.2227A P:5.3011W PF:1.0000 Freq:0Hz		
UTHDi:0.00% ITHDi:0.00% KDisp:0 Lamp Flux:556.038x1 lm		
NAME: AGL-560-30X40	TYPE: MR16 GLOBE	WEIGHT: 100G
SPEC.: AGL-560-30X40	DIM.: 50MM	SERIAL No.:
MFR.: AQUALUX	SUR.:	Shielding Angle:



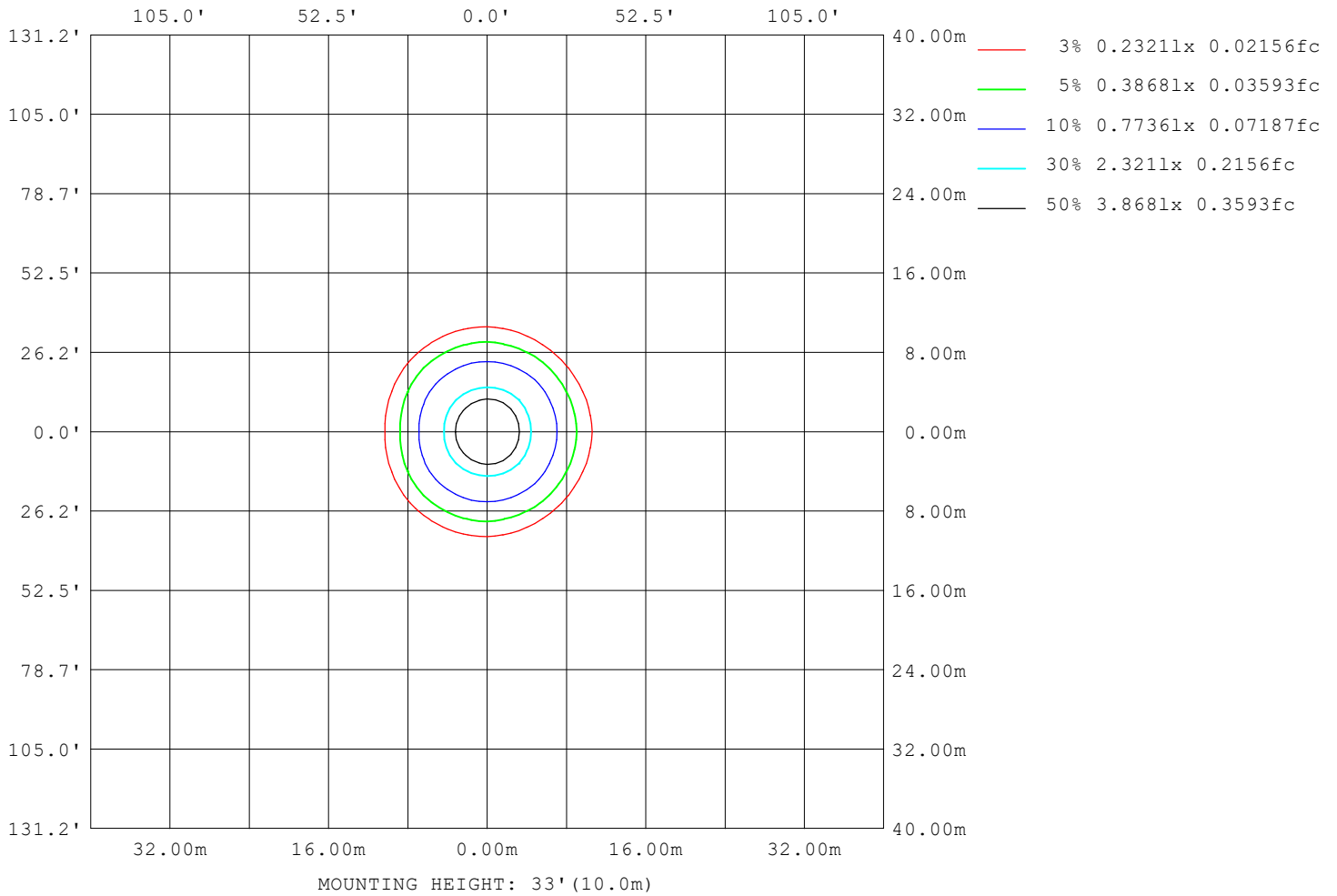
Note:The Curves indicate the illuminated area and the average illumination when the luminaire is at different distance.

C Range: 0 - 180DEG
 C Interval: 15.0DEG
 Test Speed: MEDIUM
 Temperature:20°C
 Operators:NICK
 Test Date:16 October 2023

γ Range: 0 - 90DEG
 γ Interval: 0.5DEG
 Test System:EVERFINE GO-SPEX500_V1 SYSTEM V2.00.473
 Humidity:65.0%
 Test Distance:3.100m [K=1.0000]
 Remarks: AGL-560-30X40
 4000K / 40D / 6W / 550LM

ISOLUX DIAGRAM

Test:U:23.801V I:0.2227A P:5.3011W PF:1.0000 Freq:0Hz UTHDi:0.00% ITHDi:0.00% KDisp:0 Lamp Flux:556.038x1 lm		
NAME: AGL-560-30X40	TYPE: MR16 GLOBE	WEIGHT: 100G
SPEC.: AGL-560-30X40	DIM.: 50MM	SERIAL No.:
MFR.: AQUALUX	SUR.:	Shielding Angle:



C Range: 0 - 180DEG
 C Interval: 15.0DEG
 Test Speed: MEDIUM
 Temperature: 20°C
 Operators: NICK
 Test Date: 16 October 2023

γ Range: 0 - 90DEG
 γ Interval: 0.5DEG
 Test System: EVERFINE GO-SPEX500_V1 SYSTEM V2.00.473
 Humidity: 65.0%
 Test Distance: 3.100m [K=1.0000]
 Remarks: AGL-560-30X40
 4000K / 40D / 6W / 550LM

LED Avg.L Report

Test:U:23.801V I:0.2227A P:5.3011W PF:1.0000 Freq:0Hz UTHDi:0.00% ITHDi:0.00% KDisp:0 Lamp Flux:556.038x1 lm		
NAME: AGL-560-30X40	TYPE: MR16 GLOBE	WEIGHT: 100G
SPEC.: AGL-560-30X40	DIM.: 50MM	SERIAL No.:
MFR.: AQUALUX	SUR.:	Shielding Angle:

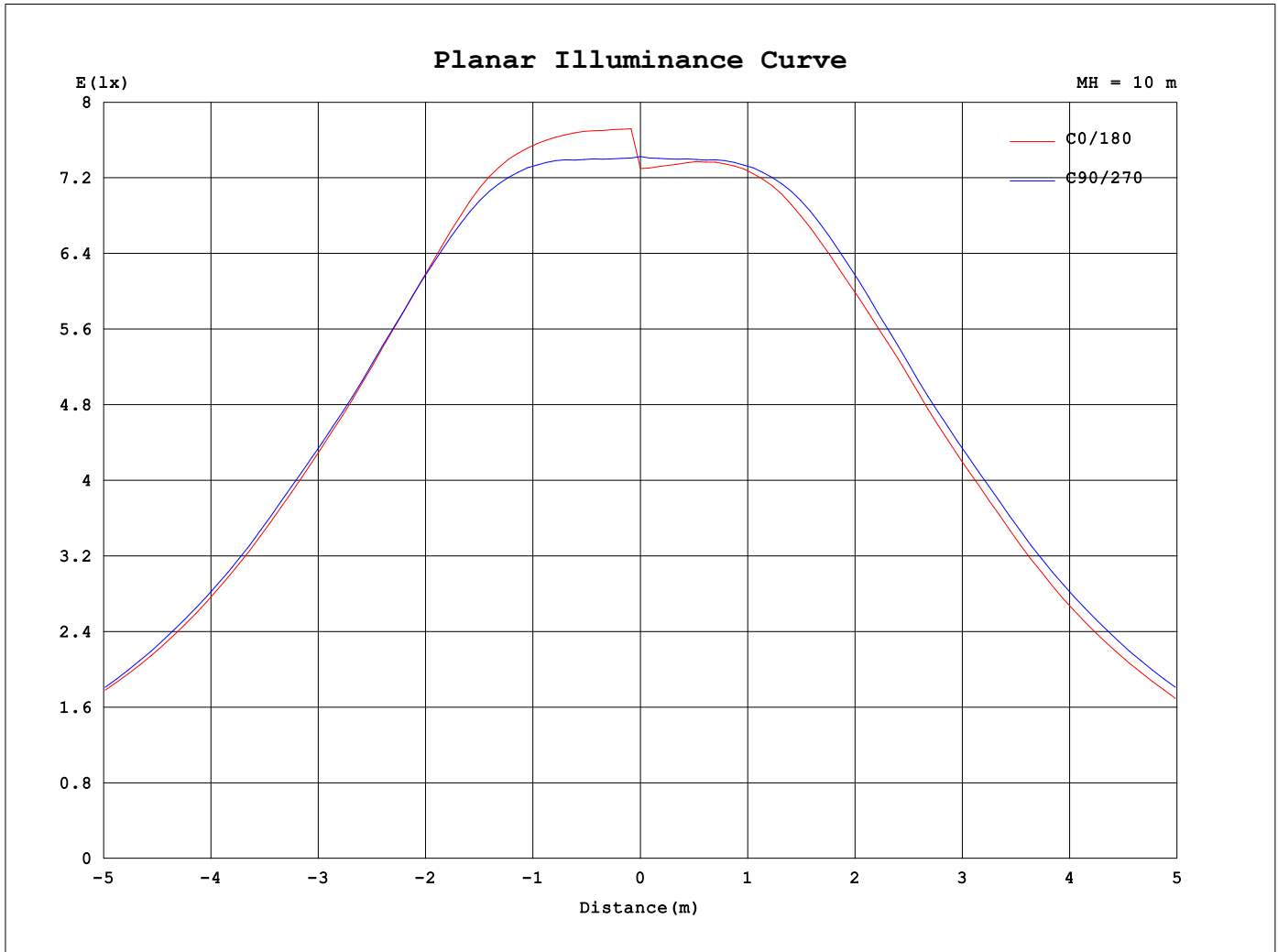
AvgL	cd/m2
L_0~180 (65) av	20665
L_0~180 (75) av	9274
L_0~180 (85) av	7277
L_90~270 (65) av	21858
L_90~270 (75) av	10105
L_90~270 (85) av	8569
L_45 (65) av	19457
L_45 (75) av	9182
L_45 (85) av	8496

Standard: GB/T 29293-2012

C Range: 0 - 180DEG
 C Interval: 15.0DEG
 Test Speed: MEDIUM
 Temperature:20°C
 Operators:NICK
 Test Date:16 October 2023

γ Range: 0 - 90DEG
 γ Interval: 0.5DEG
 Test System:EVERFINE GO-SPEX500_V1 SYSTEM V2.00.473
 Humidity:65.0%
 Test Distance:3.100m [K=1.0000]
 Remarks: AGL-560-30X40
 4000K / 40D / 6W / 550LM

Planar Illuminance Curve



C Range: 0 - 180DEG
 C Interval: 15.0DEG
 Test Speed: MEDIUM
 Temperature: 20°C
 Operators: NICK
 Test Date: 16 October 2023

γ Range: 0 - 90DEG
 γ Interval: 0.5DEG
 Test System: EVERFINE GO-SPEX500_V1 SYSTEM V2.00.473
 Humidity: 65.0%
 Test Distance: 3.100m [K=1.0000]
 Remarks: AGL-560-30X40
 4000K / 40D / 6W / 550LM

LUMINOUS DISTRIBUTION INTENSITY DATA

Test:U:23.801V I:0.2227A P:5.3011W PF:1.0000 Freq:0Hz		
UTHDi:0.00% ITHDi:0.00% KDisp:0 Lamp Flux:556.038x1 lm		
NAME: AGL-560-30X40	TYPE: MR16 GLOBE	WEIGHT: 100G
SPEC.: AGL-560-30X40	DIM.: 50MM	SERIAL No.:
MFR.: AQUALUX	SUR.:	Shielding Angle:

Table--1

UNIT: cd

C (DEG) \ γ (DEG)	0	15	30	45	60	75	90	105	120	135	150	165	180	195	210	225	240	255	270
0	744	744	744	744	744	744	744	744	744	744	744	744	744	744	744	744	744	744	744
5	740	742	742	744	746	747	747	748	747	748	751	754	756	754	751	748	747	748	747
10	669	677	678	682	683	688	690	688	682	682	681	684	682	684	681	682	682	688	690
15	519	525	528	532	537	544	544	542	537	537	536	539	538	539	536	537	537	542	544
20	378	387	397	409	409	408	400	401	399	401	400	397	390	397	400	401	399	401	400
25	265	273	281	290	289	286	282	285	288	289	286	279	270	279	286	289	288	285	282
30	187	191	195	200	199	198	197	199	199	198	196	191	186	191	196	198	199	199	197
35	137	139	141	144	143	142	143	144	145	146	144	138	135	138	144	146	145	144	143
40	103	103	103	105	104	105	107	108	108	110	107	103	100	103	107	110	108	108	107
45	76.3	75.7	73.8	74.6	74.9	76.8	79.2	80.2	80.1	80.9	78.4	75.7	73.8	75.7	78.4	80.9	80.1	80.2	79.2
50	55.5	54.3	51.7	51.4	52.1	54.7	57.2	58.2	57.5	57.1	55.5	54.5	53.2	54.5	55.5	57.1	57.5	58.2	57.2
55	39.4	38.0	35.4	34.8	35.4	37.9	40.5	41.2	39.8	39.0	38.2	38.2	37.5	38.2	38.2	39.0	39.8	41.2	40.5
60	27.3	26.1	24.1	23.6	24.0	25.9	28.1	28.5	27.1	26.4	25.9	26.3	26.0	26.3	25.9	26.4	27.1	28.5	28.1
65	17.4	16.7	15.4	15.2	15.4	16.7	18.1	18.4	17.5	17.1	16.7	17.1	16.9	17.1	16.7	17.1	17.5	18.4	18.1
70	9.66	9.25	8.52	8.46	8.61	9.40	10.3	10.5	9.90	9.69	9.45	9.70	9.67	9.70	9.45	9.69	9.90	10.5	10.3
75	4.60	4.54	4.32	4.39	4.46	4.76	5.13	5.21	4.96	4.94	4.75	4.82	4.82	4.82	4.75	4.94	4.96	5.21	5.13
80	2.33	2.37	2.36	2.44	2.46	2.53	2.56	2.61	2.67	2.76	2.67	2.62	2.58	2.62	2.67	2.76	2.67	2.61	2.56
85	1.12	1.21	1.24	1.32	1.38	1.45	1.47	1.51	1.55	1.58	1.49	1.46	1.37	1.46	1.49	1.58	1.55	1.51	1.47
90	0.01	0.00	0.00	0.00	0.00	0.01	0.00	0.00	0.00	0.00	0.00	0.00	0.00	0.00	0.00	0.00	0.00	0.00	0.00

C Range: 0 - 180DEG
 C Interval: 15.0DEG
 Test Speed: MEDIUM
 Temperature:20°C
 Operators:NICK
 Test Date:16 October 2023

γ Range: 0 - 90DEG
 γ Interval: 0.5DEG
 Test System:EVERFINE GO-SPEX500_V1 SYSTEM V2.00.473
 Humidity:65.0%
 Test Distance:3.100m [K=1.0000]
 Remarks: AGL-560-30X40
 4000K / 40D / 6W / 550LM

LUMINOUS DISTRIBUTION INTENSITY DATA

Test:U:23.801V I:0.2227A P:5.3011W PF:1.0000 Freq:0Hz UTHDi:0.00% ITHDi:0.00% KDisp:0 Lamp Flux:556.038x1 lm		
NAME: AGL-560-30X40	TYPE: MR16 GLOBE	WEIGHT: 100G
SPEC.: AGL-560-30X40	DIM.: 50MM	SERIAL No.:
MFR.: AQUALUX	SUR.:	Shielding Angle:

Table--2

UNIT: cd

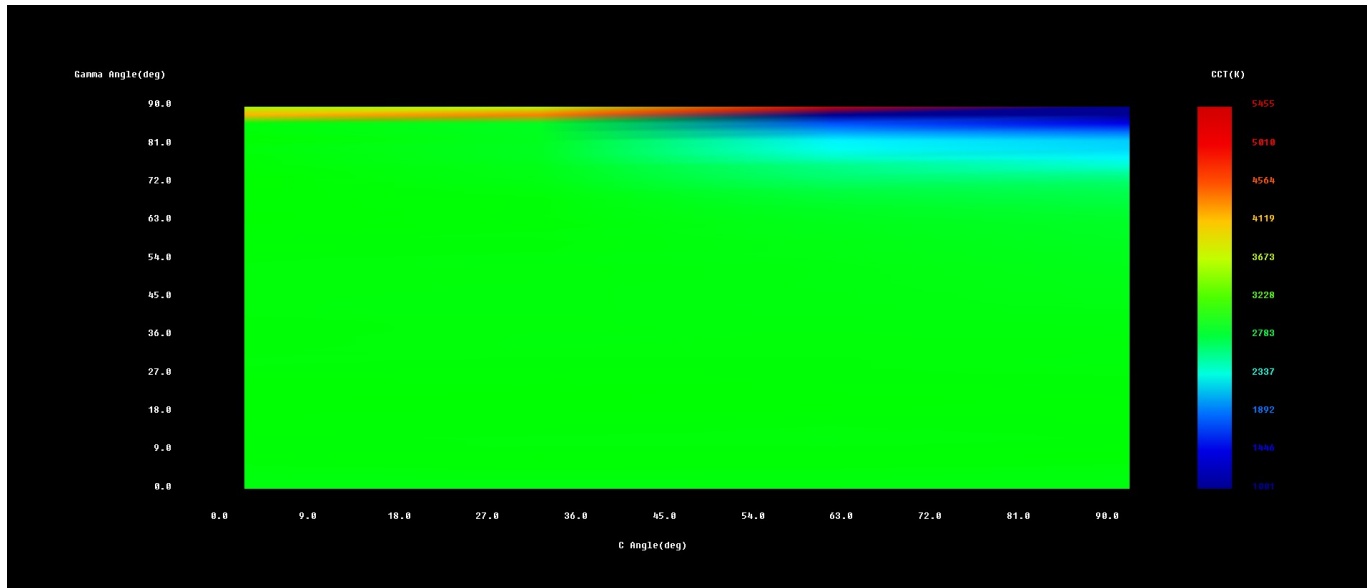
C (DEG) \ γ (DEG)	285	300	315	330	345													
0	744	744	744	744	744													
5	747	746	744	742	742													
10	688	683	682	678	677													
15	544	537	532	528	525													
20	408	409	409	397	387													
25	286	289	290	281	273													
30	198	199	200	195	191													
35	142	143	144	141	139													
40	105	104	105	103	103													
45	76.8	74.9	74.6	73.8	75.7													
50	54.7	52.1	51.4	51.7	54.3													
55	37.9	35.4	34.8	35.4	38.0													
60	25.9	24.0	23.6	24.1	26.1													
65	16.7	15.4	15.2	15.4	16.7													
70	9.40	8.61	8.46	8.52	9.25													
75	4.76	4.46	4.39	4.32	4.54													
80	2.53	2.46	2.44	2.36	2.37													
85	1.45	1.38	1.32	1.24	1.21													
90	0.01	0.00	0.00	0.00	0.00													

C Range: 0 - 180DEG
 C Interval: 15.0DEG
 Test Speed: MEDIUM
 Temperature:20°C
 Operators:NICK
 Test Date:16 October 2023

γ Range: 0 - 90DEG
 γ Interval: 0.5DEG
 Test System:EVERFINE GO-SPEX500_V1 SYSTEM V2.00.473
 Humidity:65.0%
 Test Distance:3.100m [K=1.0000]
 Remarks: AGL-560-30X40
 4000K / 40D / 6W / 550LM

Spatial Color Distribution Report

NAME: AGL-560-30X40	TYPE: MR16 GLOBE	WEIGHT: 100G
DIM.: 50MM	SPEC.: AGL-560-30X40	SERIAL No.:
MFR.: AQUALUX		



Color Parameters:

Average: $x=0.4412, y=0.4030, u'=0.2538, v'=0.5216$ CCT=2920K Ra=81.2 Rf=83 Rg=96
Center : $x=0.4423, y=0.4033, u'=0.2544, v'=0.5219$ CCT=2905K Ra=81.1 Rf=83 Rg=96
IESNA LM-79-2019 Max. $du'v'$: 0.0014 / max. $du'v'$: 0.0000[Set Range]
GB/T 24824(LB/T 001-2009):: avg. color nonuniformity $du'v'$:0.0006
GB/T 24824(LB/T 001-2009):: max. color nonuniformity $du'v'$:0.0013
Average: R1=79 R2=90 R3=96 R4=78 R5=79 R6=88 R7=82 R8=57 R9=3 R10=78
R11=76 R12=69 R13=82 R14=99 R15=72

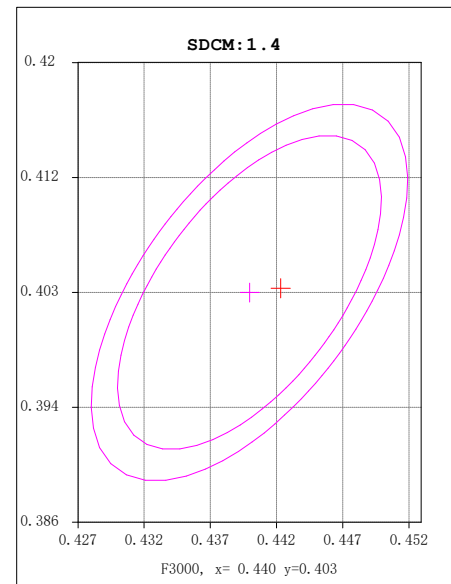
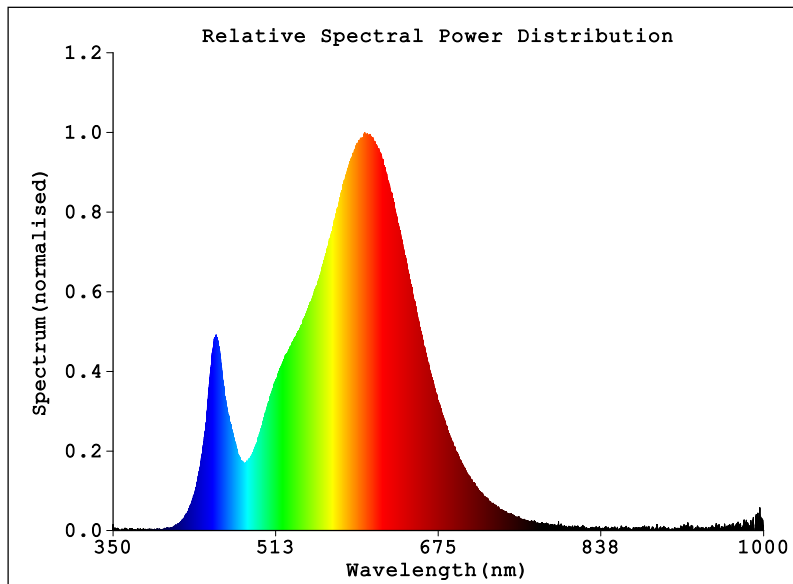
Tester: NICK
Temperature: 20°C
Manufacturer: AQUALUX

Date: 16 October 2023
Humidity: 65.0%
Remarks: AGL-560-30X404000K / 40D / 6W / 550LM

System: GO-SPEX500_V1

Spectral Radiant Test Report

NAME: AGL-560-30X40	TYPE: MR16 GLOBE	WEIGHT: 100G
DIM.: 50MM	SPEC.: AGL-560-30X40	SERIAL No.:
MFR.: AQUALUX		



Photon & Colormetric & Photometric Quantities:

PPFD=1.0623umol/m2/s Ee, PAR=0.21961W/m2 K_PPFD, E=0.014292 K_PAR, E=0.0029546
 Chromaticity Coordinates: x=0.4423 y=0.4033/u'=0.2544 v'=0.5219 duv=-0.00100
 Tc=2905K Dominant WL: Ld=583.6nm Purity=53.8%
 Ratio: R=23.4% G=74.3% B=2.4% Peak WL: Lp=601.4nm HWL: 122.1nm
 Rendering Index: Ra=81.1 TM-30: Rf=83 Rg=96 CQS: Qa=81.92 TLCI = 66
 R1 =79 R2 =90 R3 =96 R4 =78 R5 =79 R6 =88 R7 =82
 R8 =57 R9 =4 R10=77 R11=76 R12=70 R13=82 R14=99 R15=72
 E = 74.32 lx Ee = 0.2291 W/m2

Status: T=720.00ms Ip=48797 (74%) [HAAS-1200(CAN)]

Electrical: U=23.802V I=0.22233A P=5.2919W PF=1.0000

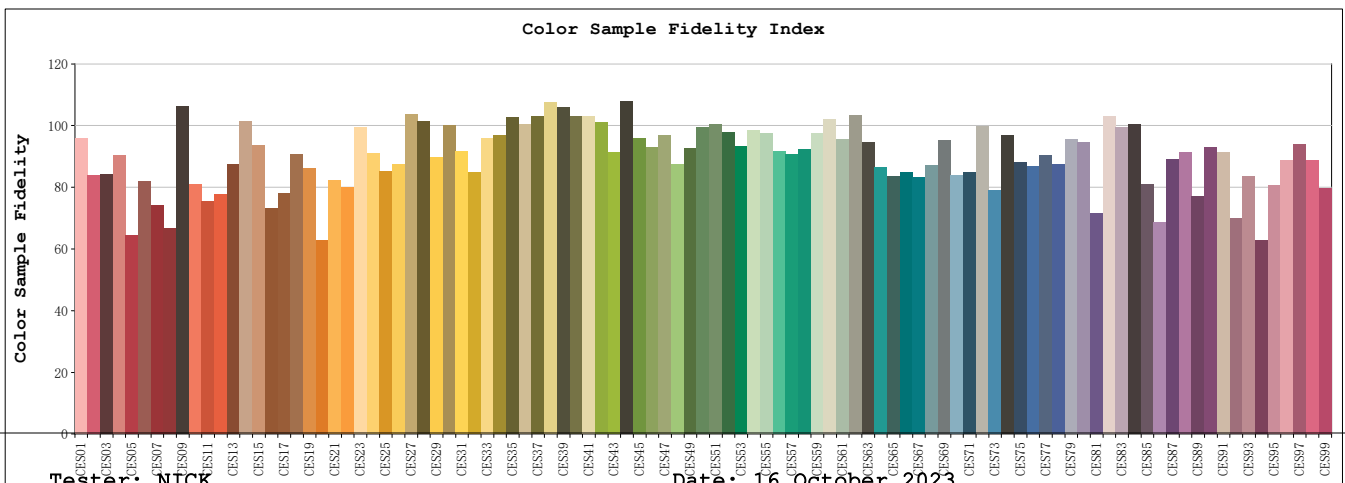
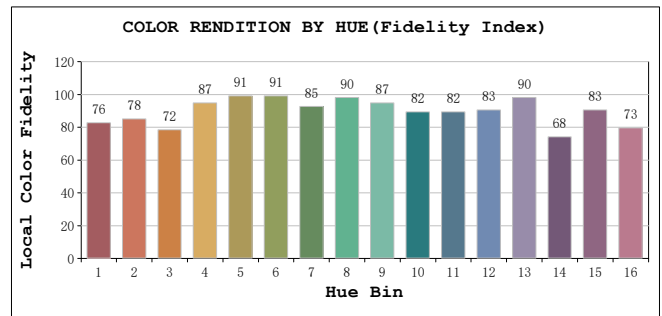
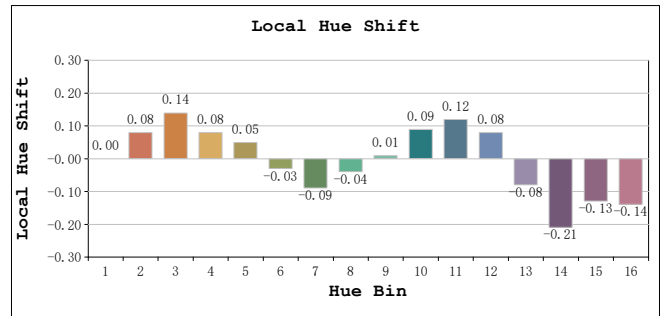
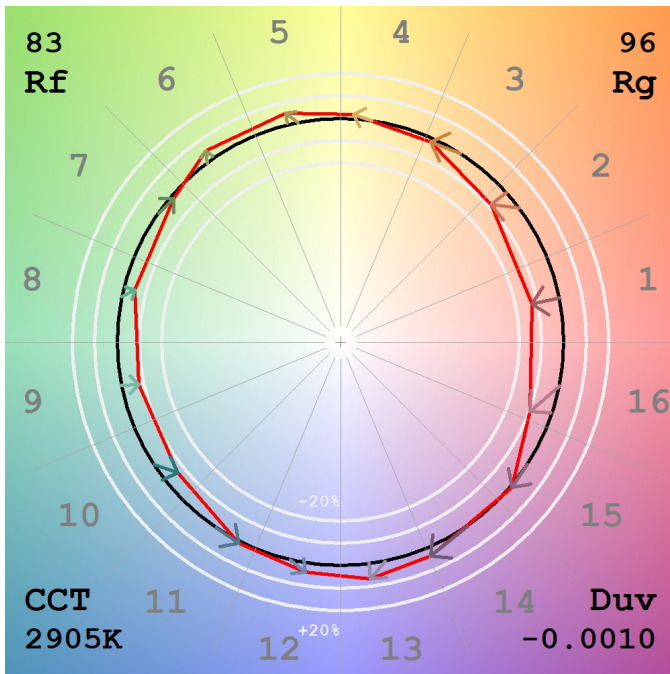
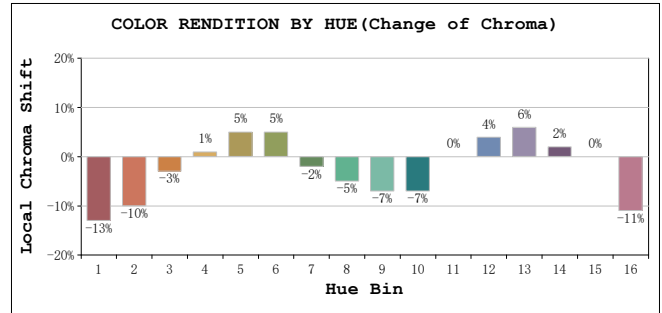
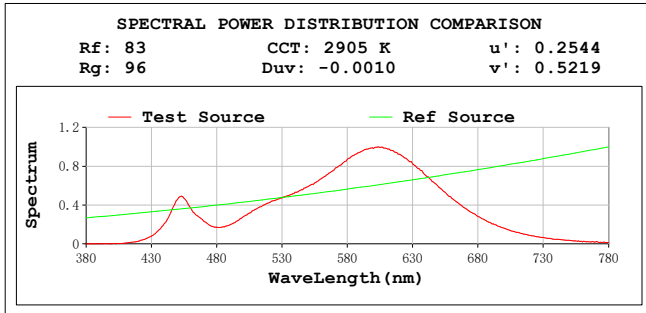
Test position: Center

Tester: NICK
 Temperature: 20°C
 Manufacturer: AQUALUX

Date: 16 October 2023
 Humidity: 65.0%
 Remarks: AGL-560-30X404000K / 40D / 6W / 550LM

System: GO-SPEX500_V1

TM30



Tester: NICK
 Temperature: 20°C
 Manufacturer: AQUALUX
 System: GO-SPEX500_V1

Date: 16 October 2023
 Humidity: 65.0%
 Remarks: AGL-560-30X404000K / 40D / 6W / 550LM

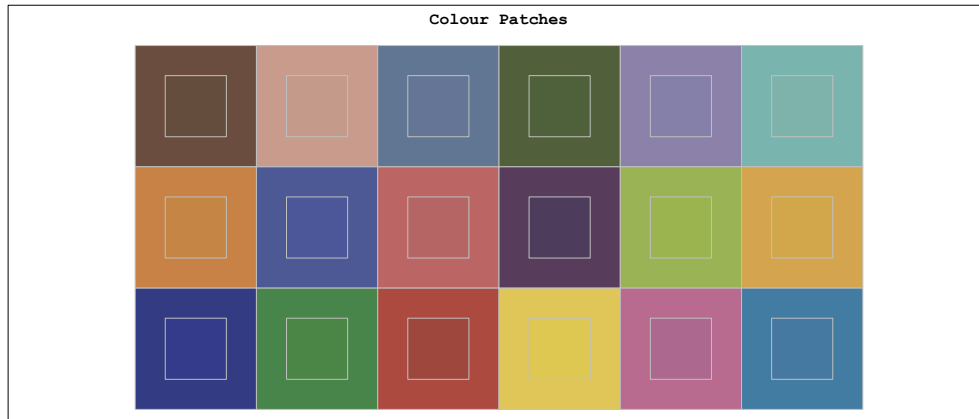
All Rf:

Rf1 = 88.0	Rf2 = 77.0	Rf3 = 77.4
Rf4 = 83.0	Rf5 = 59.0	Rf6 = 75.2
Rf7 = 68.1	Rf8 = 61.1	Rf9 = 97.4
Rf10 = 74.3	Rf11 = 69.3	Rf12 = 71.2
Rf13 = 80.1	Rf14 = 93.1	Rf15 = 85.8
Rf16 = 67.1	Rf17 = 71.7	Rf18 = 83.1
Rf19 = 79.2	Rf20 = 57.8	Rf21 = 75.5
Rf22 = 73.5	Rf23 = 91.3	Rf24 = 83.6
Rf25 = 78.1	Rf26 = 80.2	Rf27 = 94.9
Rf28 = 93.1	Rf29 = 82.4	Rf30 = 91.8
Rf31 = 84.0	Rf32 = 77.7	Rf33 = 87.9
Rf34 = 88.7	Rf35 = 94.3	Rf36 = 92.1
Rf37 = 94.3	Rf38 = 98.5	Rf39 = 97.2
Rf40 = 94.4	Rf41 = 94.6	Rf42 = 92.8
Rf43 = 83.9	Rf44 = 99.1	Rf45 = 88.1
Rf46 = 85.2	Rf47 = 88.8	Rf48 = 80.1
Rf49 = 84.9	Rf50 = 91.3	Rf51 = 92.2
Rf52 = 89.7	Rf53 = 85.4	Rf54 = 90.4
Rf55 = 89.4	Rf56 = 84.0	Rf57 = 83.3
Rf58 = 84.7	Rf59 = 89.5	Rf60 = 93.7
Rf61 = 87.7	Rf62 = 94.9	Rf63 = 86.7
Rf64 = 79.4	Rf65 = 76.8	Rf66 = 77.8
Rf67 = 76.5	Rf68 = 79.9	Rf69 = 87.4
Rf70 = 77.0	Rf71 = 77.8	Rf72 = 91.5
Rf73 = 72.5	Rf74 = 88.7	Rf75 = 80.7
Rf76 = 79.7	Rf77 = 83.0	Rf78 = 80.3
Rf79 = 87.7	Rf80 = 86.8	Rf81 = 65.7
Rf82 = 94.4	Rf83 = 91.3	Rf84 = 92.1
Rf85 = 74.2	Rf86 = 63.0	Rf87 = 81.7
Rf88 = 83.7	Rf89 = 70.6	Rf90 = 85.3
Rf91 = 83.8	Rf92 = 64.1	Rf93 = 76.8
Rf94 = 57.6	Rf95 = 73.9	Rf96 = 81.4
Rf97 = 86.2	Rf98 = 81.5	Rf99 = 73.0

Tester: NICK
Temperature: 20°C
Manufacturer: AQUALUX

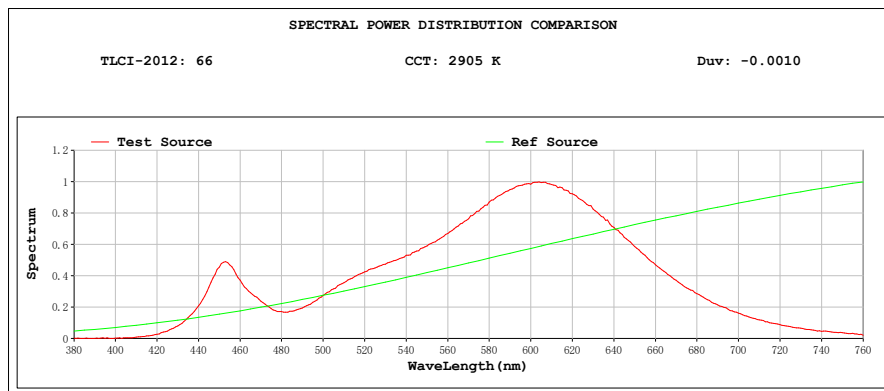
Date: 16 October 2023
Humidity: 65.0%
Remarks: AGL-560-30X404000K / 40D / 6W / 550LM

System: GO-SPEX500_V1



Colourist's Advice Report

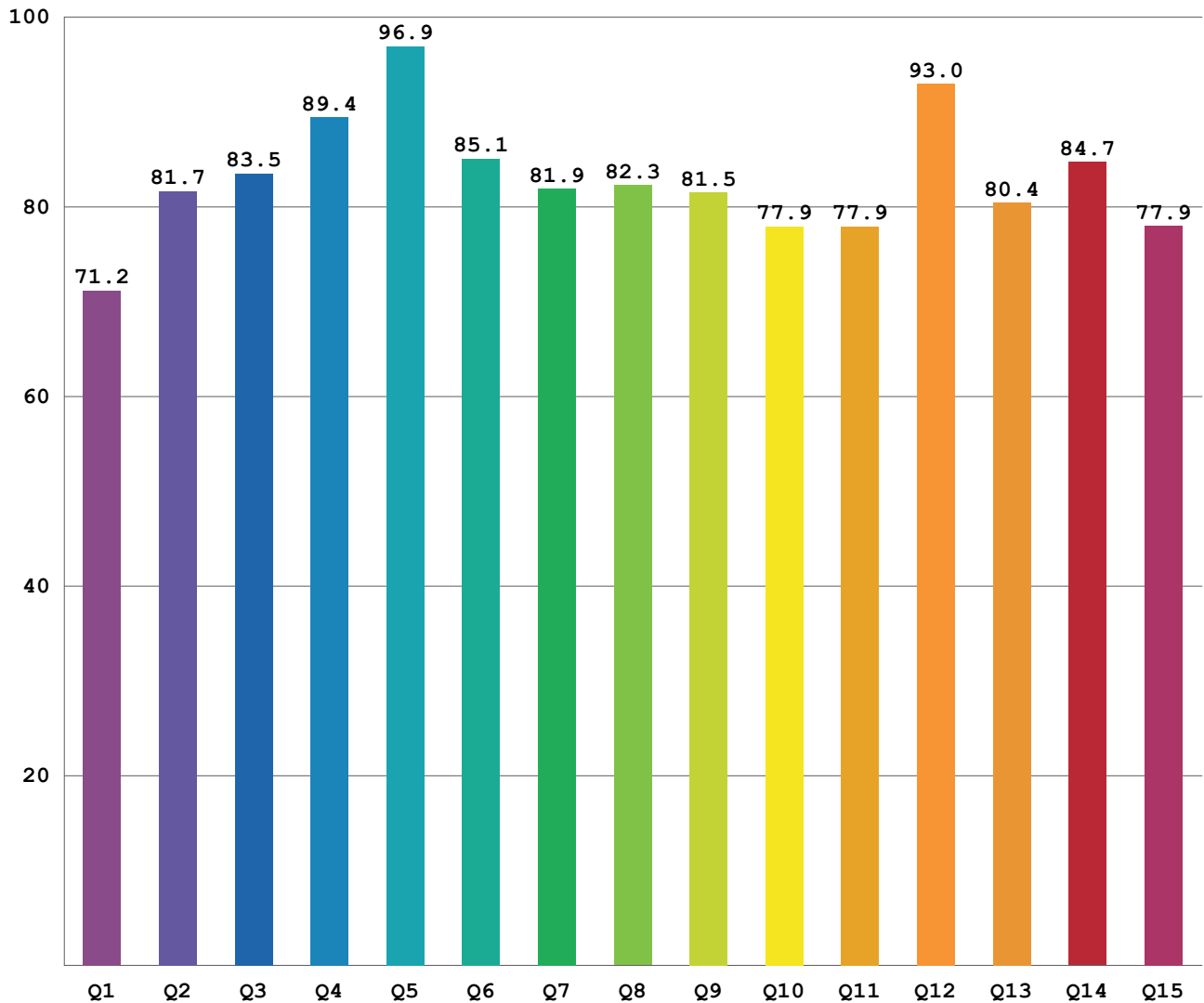
Sector	Lightness	Chroma	Hue
R	-4	-2	-1
R/Y	-1	-1	3
Y	1	1	3
Y/G	0	1	0
G	1	0	-2
G/C	0	0	-2
C	-1	-1	-2
C/B	-2	0	3
B	0	2	2
B/M	-2	1	-5
M	-3	0	-5
M/R	-4	-1	-5



Tester: NICK
 Temperature: 20°C
 Manufacturer: AQUALUX
 System: GO-SPEX500_V1

Date: 16 October 2023
 Humidity: 65.0%
 Remarks: AGL-560-30X404000K / 40D / 6W / 550LM

CQS: 80.9



Q1	Q2	Q3	Q4	Q5	Q6	Q7	Q8	Q9	Q10	Q11	Q12	Q13	Q14	Q15
71.2	81.7	83.5	89.4	96.9	85.1	81.9	82.3	81.5	77.9	77.9	93.0	80.4	84.7	77.9

Tester: NICK
 Temperature: 20°C
 Manufacturer: AQUALUX
 System: GO-SPEX500_V1

Date: 16 October 2023
 Humidity: 65.0%
 Remarks: AGL-560-30X404000K / 40D / 6W / 550LM

