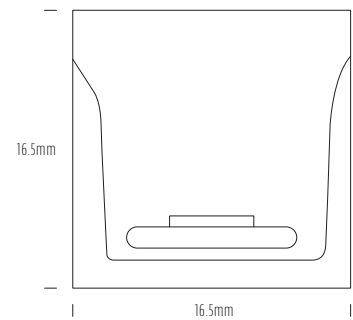
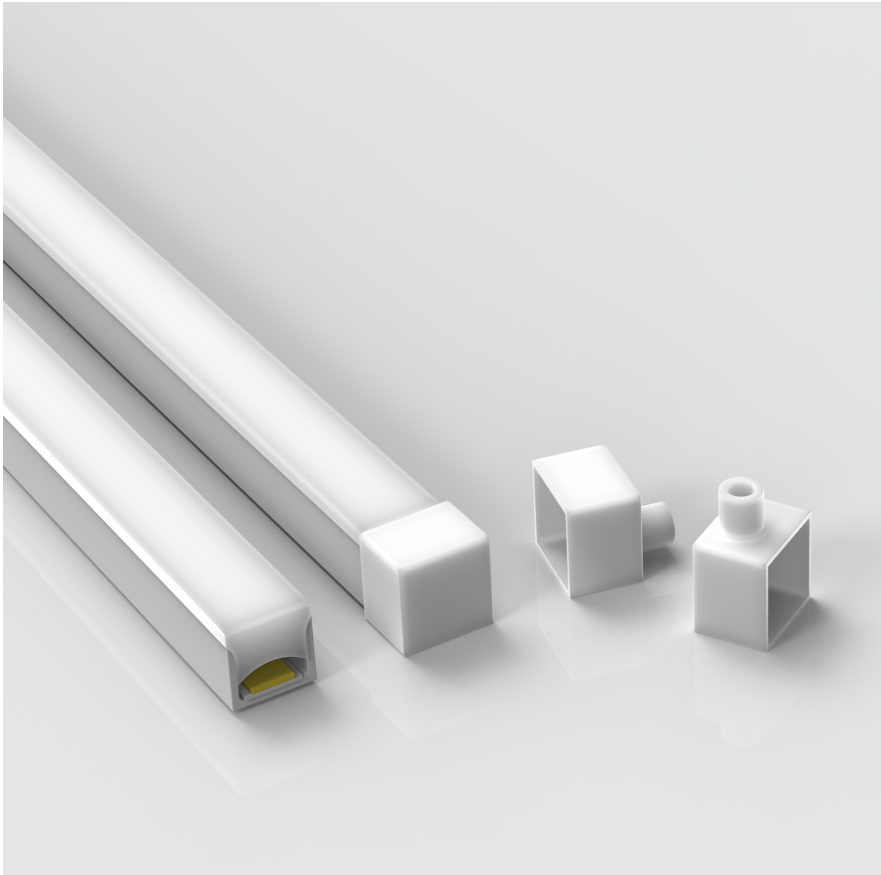


# AQS-510 / RGB

AQS-510 is a high output top-view IP68 Neon Flex in RGB for external facade illumination, pool copings, in-pavement channels and exterior wall grazing where substantial moisture and mechanical protection is required.

# Neon Flex



Product	AQS-510-RGB
Voltage	24V DC
Watts (per Meter)	13W
IP Rating	IP68
Lumen Output (per Meter)	TBA
CCT & Colour Options	RGB
Working Mode	Constant Voltage (PWM) / DMX
Max Length (Single Power Feed)	10m
Max Length (Double Power Feed)	20m
Cut Interval	83.30mm
Bend Direction	Vertically
Minimum Bend Diameter	120mm
LED Type	SMD5050
LED Qty / M	72pcs
Lumen Maintenance	70,000 Hours L70@ 25°C, 50,000 Hours L70@ 50°C
Materials	Eco PVC
Emission Angle	120°
Operating Temperature	-20° to +40°C
Installation Temperature	5° to +35°C
Warranty	3 Year Aqualux Warranty

### Production Tolerances

The AQS-500 series Neon Flex product is manufactured in a continuous extrusion process and then manually terminated with IP68 overmolded cable entry points. Production tolerances need to be accounted for during site preparation.

- < 1M ±5mm
- < 5M Length ±10mm
- < 10M Length ±15mm
- < 20M ± 20mm

Refer to installation guide when planning your project.

For wiring diagrams please refer to the aqualux website: [www.aqualux.com.au / Support / Downloads / Wiring Diagrams](http://www.aqualux.com.au / Support / Downloads / Wiring Diagrams)

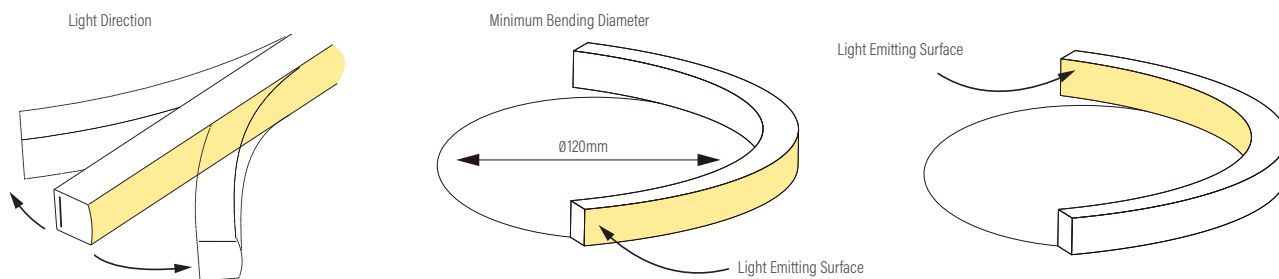
As with all IP68 products, the ingress protection is determined by the quality of the cable joins and installation.

# Neon Flex

## Variations

Product	CCT Kelvin	Voltage Direct Current	Watts Meter	Lumens Meter	Max Run Single End	Max Run Double End
AQS-510-ZIA13	RGB	24V DC	13W	TBA	10m	20m

### Bending Directions



## DMX Cable Length Limits

Without Amplification Total Length = 50m

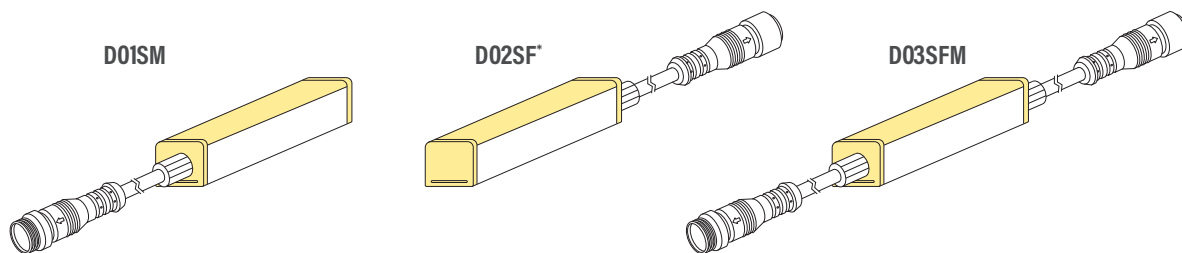
With Single Amplification Total Length = 100m

With Dual Amplification Total Length = 200m

## Quick Connect Cable Entry Options

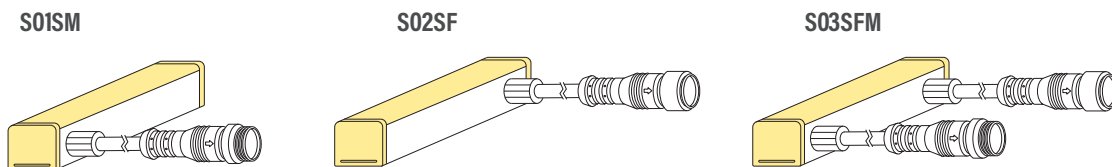
- Integrated non-removeable anti-siphon device
- IP68 factory assembly only
- Injection Moulded Connectors

### Direct Cable Entry

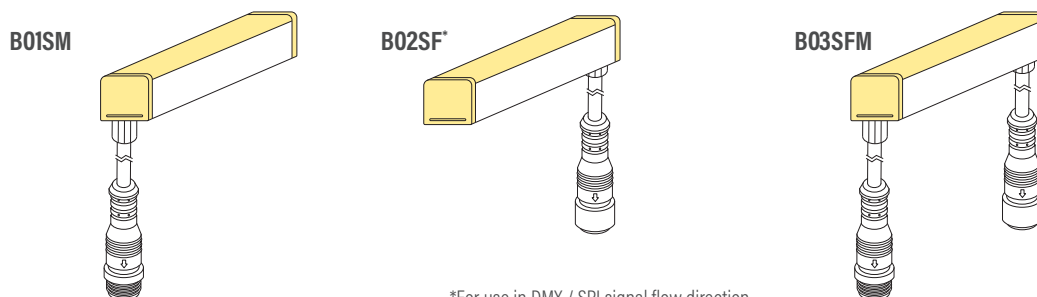


\*For use in DMX / SPI signal flow direction.

### Side Cable Entry



### Bottom Cable Entry

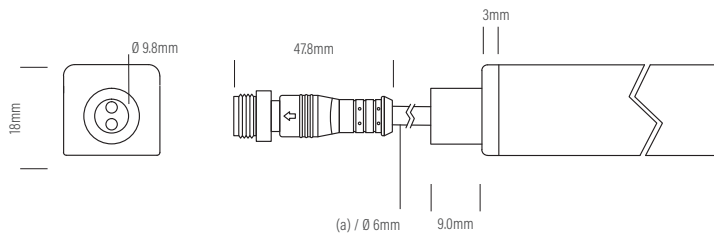


\*For use in DMX / SPI signal flow direction.

# Neon Flex

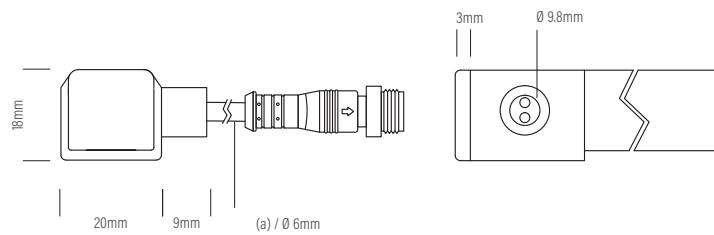
## Quick Connector Dimensions

### Direct Cable Entry



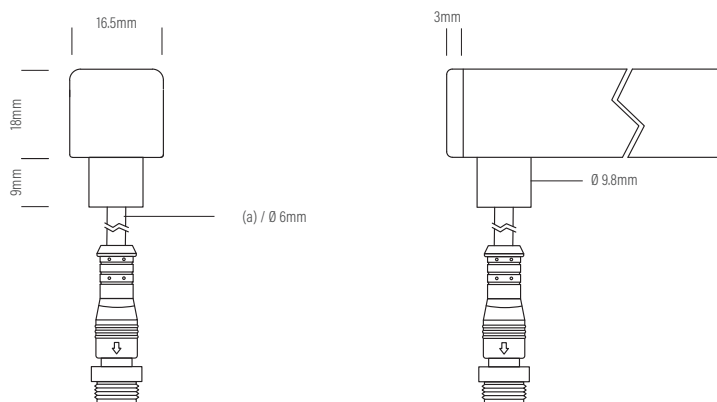
(a) = Minimum length of 6 - 8mm

### Side Cable Entry



(a) = Minimum length of 6 - 8mm

### Bottom Cable Entry



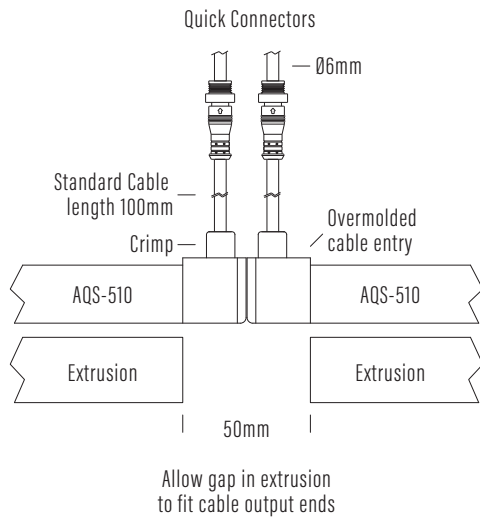
(a) = Minimum length of 6 - 8mm

# Neon Flex

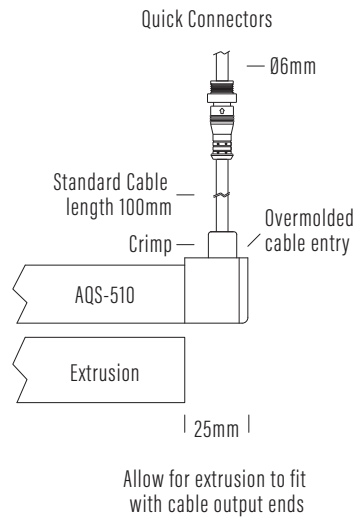
## Extrusion and End Cap allowances

### Assembly Notes

Quick Connector Output



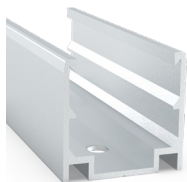
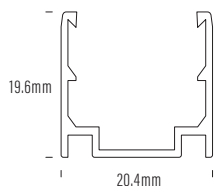
Quick Connector Output



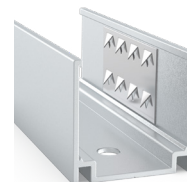
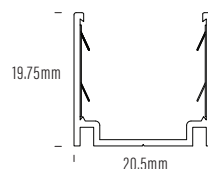
# Neon Flex

## Mounting

AQS-510-ACC-01  
Aluminium Clip



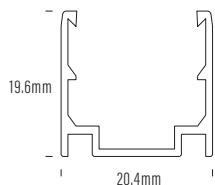
AQS-510-ACC-02  
Aluminium Clip



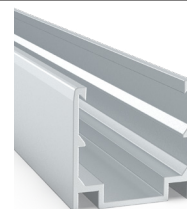
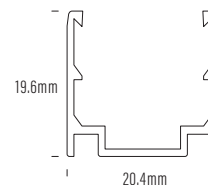
AQS-510-ACC-AL-01  
1m Aluminium

**Anti-slip profile.**

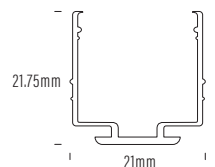
1. More aggressive retention of Neon Flex.
2. Harder to remove once inserted.
3. Use for vertical or inverted mounting applications.



AQS-510-ACC-AL-02  
2m Aluminium



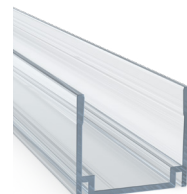
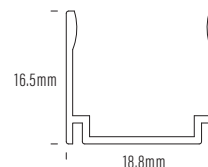
AQS-510-ACC-AL2-02  
2m Aluminium



AQS-510-ACC-AL-03  
1m Polycarbonate

**Standard profile.**

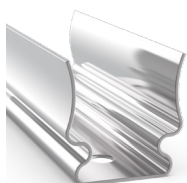
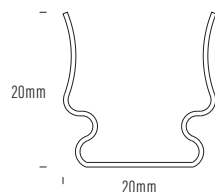
1. Use for horizontal applications.
2. Easier to remove Neon Flex once inserted.



AQS-510-ACC-01-SS  
316SS Mounting Clip

**Application.**

1. Pools and High Corrosive areas.



## Neon Flex

### AQS Family Reference Table

Product	Type	IP Rating	LED Options	Size mm	Power/m	Application
AQS-170	Cob Strip	IP20	Mono	10mm	5W / 10W / 15W DC	Internal / Profile required
AQS-172	Cob Strip	IP20	Mono	4mm	5W DC	Internal / Profile required
AQS-173	Cob Strip	IP20	RGBW	12mm	16W DC	Internal / Profile required
AQS-400	Neon Flex	IP65	Mono	9 x 10	5W / 10W DC	External / No profile required
AQS-401	Neon Flex	IP65	Mono	10 x 10	5W / 10W DC	External / No profile required
AQS-402	Neon Flex	IP65	Mono / RGB	6 x 12	5W / 10W DC	External / No profile required
AQS-410	Neon Flex	IP65	RGB	13 x 12	10W DC	External / No profile required
AQS-420	Neon Flex	IP65	Mono / RGBW	12 x 20	10W / 15W	External / No profile required
AQS-500	Neon Flex	IP68	Mono / RGB / RGBW / DMX	11.5 x 21	(Mono 5W / 8W / 12W) / 12W / 17W / 18W	External / Submerged / No profile
AQS-505	Neon Flex	IP68	Mono	13.5 x 13.5	10W	External / Submerged / No profile
AQS-510	Neon Flex	IP68	Mono / RGB / RGBW / DMX	16.5 x 16.5	10W / 13W / 17W / 18W	External / Submerged / No profile

### Extension Wire Recommendations

Maximum extension wire length according to light power

Watts	22AWG 0.34mm <sup>2</sup>	20AWG 0.53mm <sup>2</sup>	18AWG 0.82mm <sup>2</sup>	17AWG 1.04mm <sup>2</sup>	16AWG 1.38mm <sup>2</sup>	14AWG 2.07mm <sup>2</sup>	12AWG 3.29mm <sup>2</sup>	10AWG 5.62mm <sup>2</sup>
10W	36m	60m	100m	120m	140m	240m	400m	600m
20W	18m	30m	50m	60m	70m	120m	200m	300m
30W	12m	20m	30m	38m	45m	80m	130m	200m
40W	8m	15m	22m	28m	35m	60m	95m	140m
50W	6m	12m	18m	22m	28m	48m	75m	105m
60W	5m	10m	15m	18m	22m	36m	60m	88m
70W	-	8m	12m	14m	18m	30m	50m	72m
80W	-	6m	10m	11m	14m	24m	40m	58m
90W	-	4m	7m	8m	10m	18m	30m	45m
100W	-	-	5m	6m	7m	12m	22m	32m
110W	-	-	3m	4m	5m	8m	15m	22m
120W	-	-	2m	2.5m	3m	0m	8m	12m