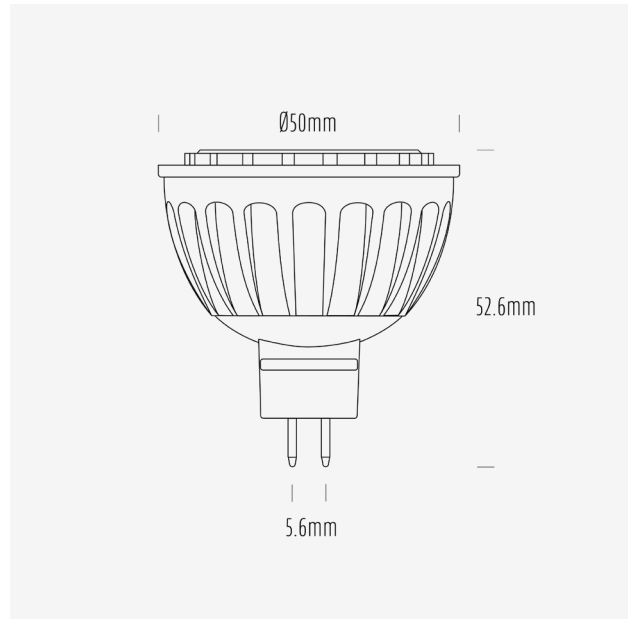


AGL 560 Series

MR16 LED Globes



AGL-560-30X120 / 3000K / MR16 / 120°



Product Data

Product Code	AGL-560-30X120			
Description	Aqualux 560 Series LED Lamp			
Type	MR16 GU5.6			
Construction	Aluminium Heatsink + PMMA Optic			
Warranty	3 Years			

Electrical Data

Input Voltage Range	12~24V AC/DC			
Nominal Voltage	24VDC			
Nominal Power	6W			
Nominal Current	250mA			
Input Voltage	12VDC	12VAC	24VDC	24VAC
Rated Power	6.2	4.0	5.9	6.0
Operating Frequency	-	50Hz	-	50Hz
Max. no. of lamps on AQD24-040	5	-	5	-
Max. no. of lamps on AQD24-100	17	-	17	-
Max. no. of lamps on AQD24-240	-	-	-	-

Dimming Compatibility	Non dimming
Wiring Scheme	Parallel
Startup Time	< 0.5s

Mechanical & Thermal Data

Overall Length	52.6mm
Max Diameter	50mm
Lamp Base	GU5.6
Weight	55g
Operating Temp Range	-20° - 45°
IP Rating	IP20

Photometric Data

Nominal Flux (lm)	560			
Input Voltage	12VDC	12VAC	24VDC	24VAC
Input Power (W)	6.2	4.0	5.9	6.0
Rated Flux (lm)	697	450	710	703
Efficacy (lm/W)	112	114	121	117
CCT	3000K			
CCT Description	Warm White			
CRI (Ra)	81			
CRI (R9)	0			
TM-30 (Rf)	83			
TM-30 (Rg)	96			
SDCM	-			
Peak Intensity (cd)	186			
Nominal Beam Angle	120°			
Measured Beam Angle (FWHM)	116°			

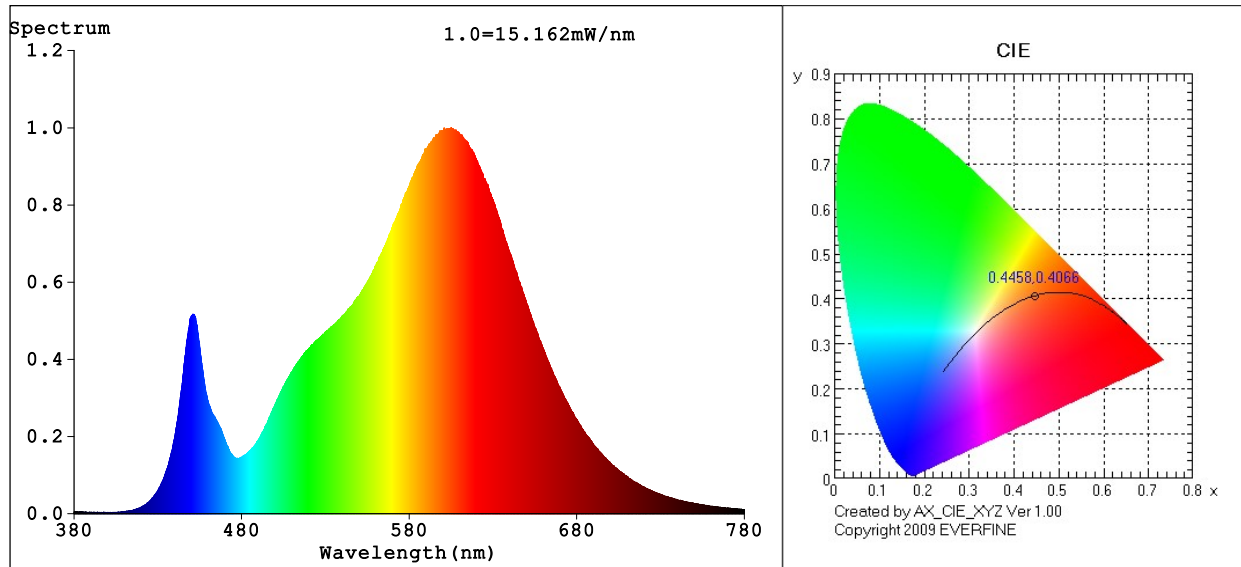
Lifespan Data

L70	15,000h
Switching Cycles	15,000

Compliance Data

EMI	Yes
RCM	N/A
Mercury Content	0mg

Spectrum Test Report



Color Parameters:

Chromaticity Coordinate: $x=0.4458$ $y=0.4066$ / $u'=0.2552$ $v'=0.5237$
 CCT=2877K (Duv=-0.0001) Dominant WL:Ld =583.4nm WL:Lc = --nm Purity=55.9%
 Ratio:R=23.6% G=74.2% B=2.3%; Peak WL:Lp=605.1nm FWHM=116.2nm
 Render Index:Ra=80.9 AvgR=74.9 TM30:Rf=83 Rg=96

R1 =79 R2 =90 R3 =96 R4 =79 R5 =79 R6 =88 R7 =81
 R8 =54 R9 =0 R10=78 R11=78 R12=70 R13=82 R14=99 R15=71

Photo Parameters:

Flux = 710.0 lm Eff. : 121.29 lm/W Fe = 2.117 W

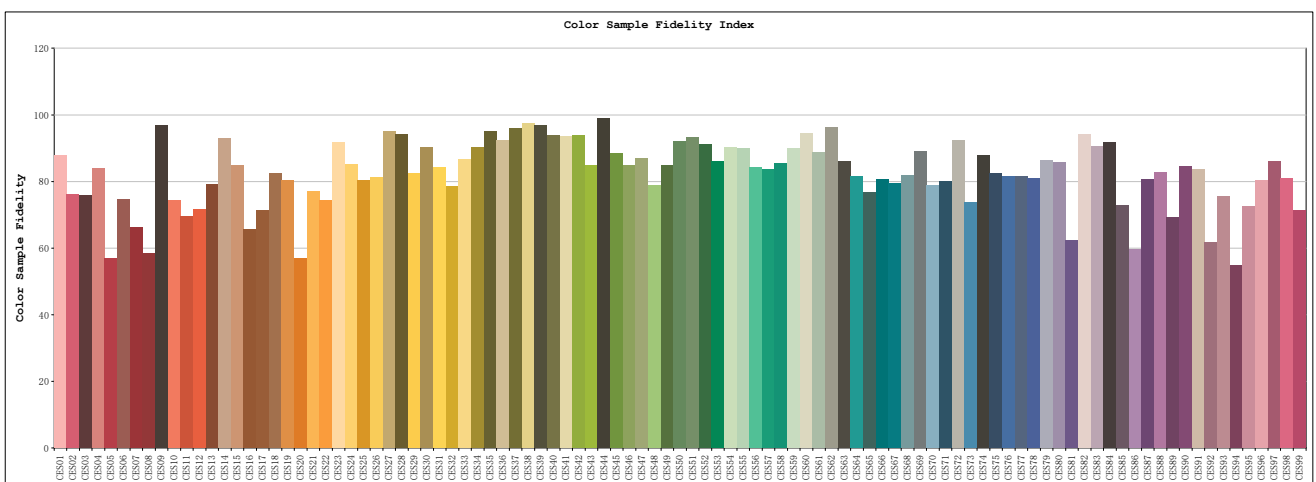
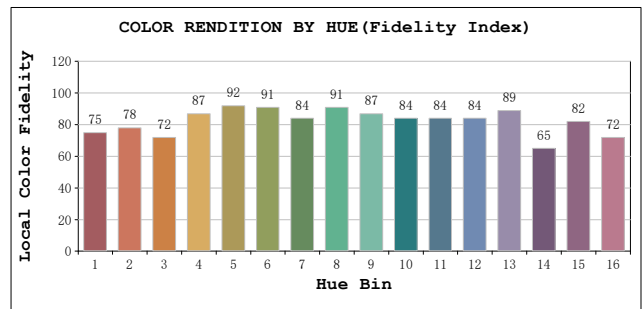
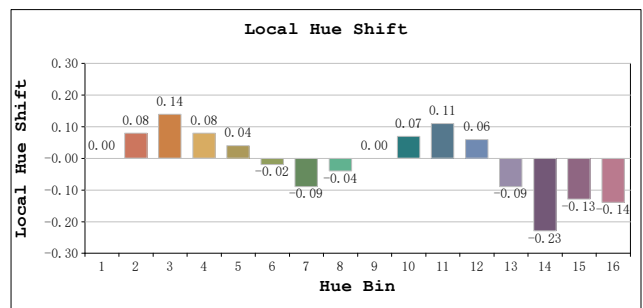
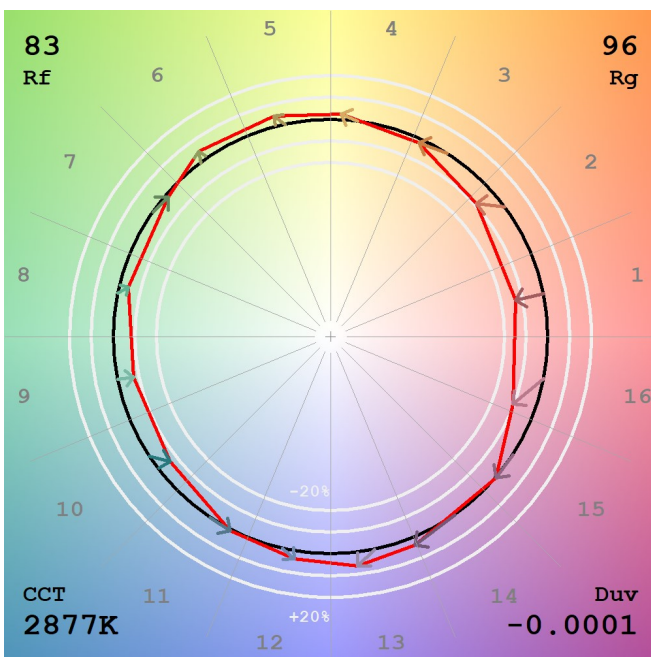
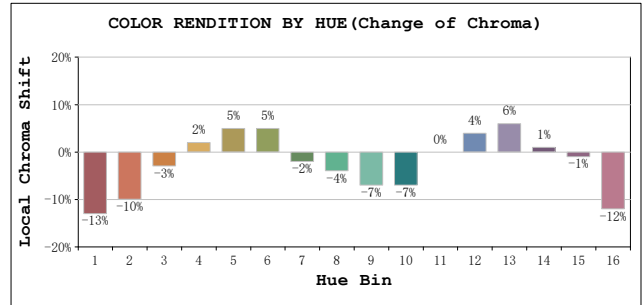
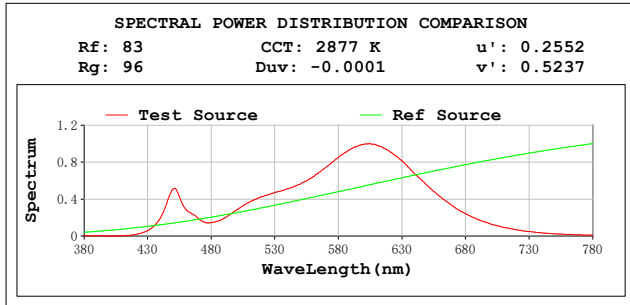
Electrical parameters:

V = 23.982 V I = 0.2441 A P = 5.854 W PF = 1.0000
 LEVEL:OUT WHITE:ANSI_3000K
 Status: Integral T = 140 ms Ip = 37029 (57%)

GBT5702

TM30

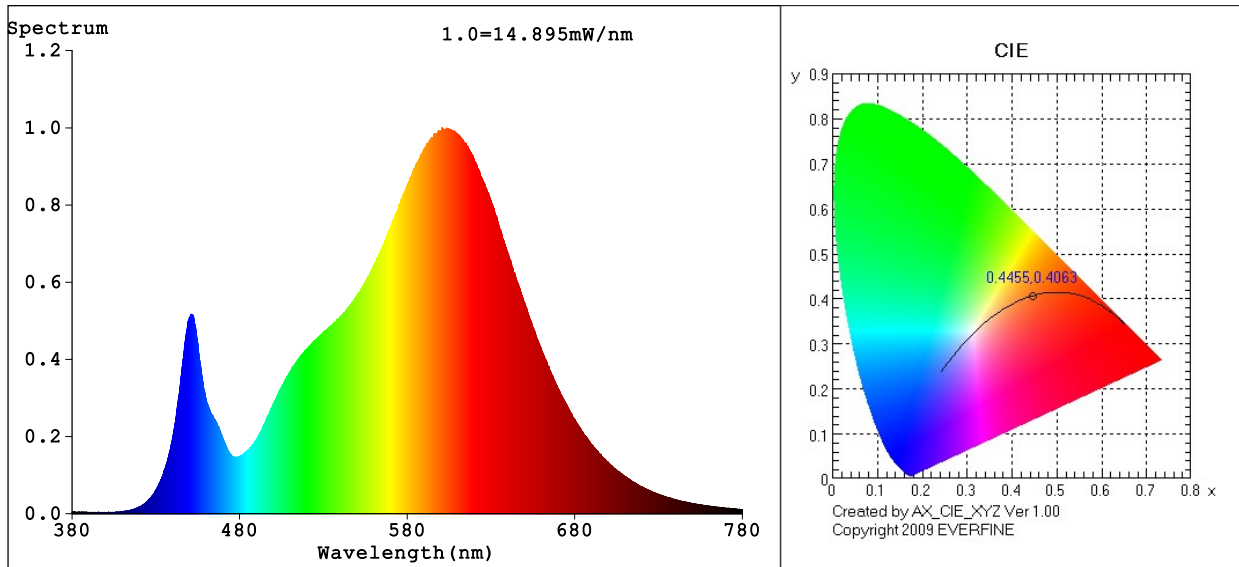
View Angle:2 Deg



Model:AGL-560-30X120
 Tester:NC
 Temperature:25.3Deg
 Manufacturer:AQUALUX

Number:AGL-560-30X120 24VDC
 Date:2023-10-17 16:24:35
 Humidity:65.0%
 Remarks:24VDC

Spectrum Test Report



Color Parameters:

Chromaticity Coordinate: $x=0.4455$ $y=0.4063$ / $u'=0.2551$ $v'=0.5235$
 CCT=2878K (Duv=-0.0002) Dominant WL:Ld =583.4nm WL:Lc = --nm Purity=55.7%
 Ratio:R=23.5% G=74.2% B=2.3%; Peak WL:Lp=600.9nm FWHM=116.2nm
 Render Index:Ra=80.9 AvgR=74.9 TM30:Rf=83 Rg=96

R1 =79 R2 =90 R3 =96 R4 =79 R5 =79 R6 =88 R7 =81
 R8 =55 R9 =0 R10=78 R11=78 R12=70 R13=82 R14=98 R15=71

Photo Parameters:

Flux = 696.8 lm Eff. : 112.11 lm/W Fe = 2.079 W

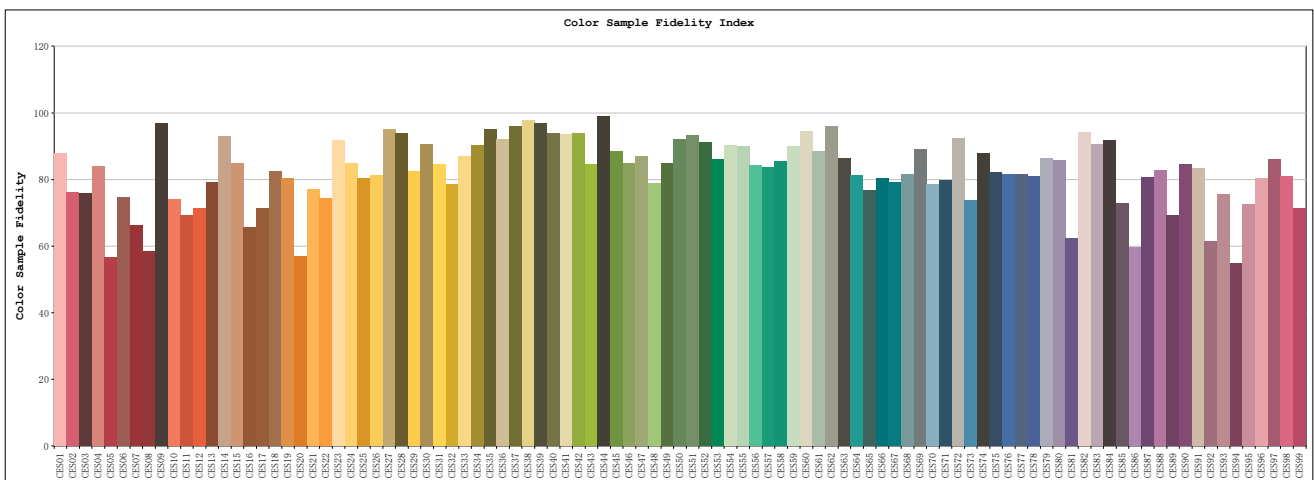
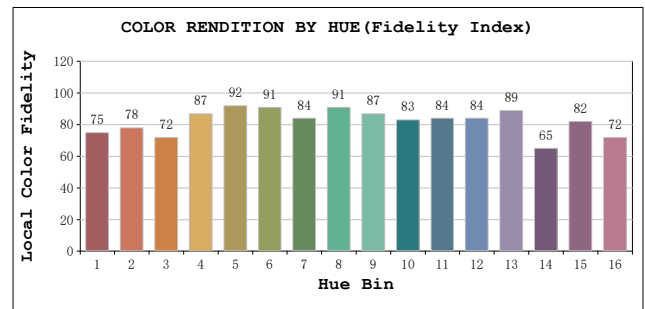
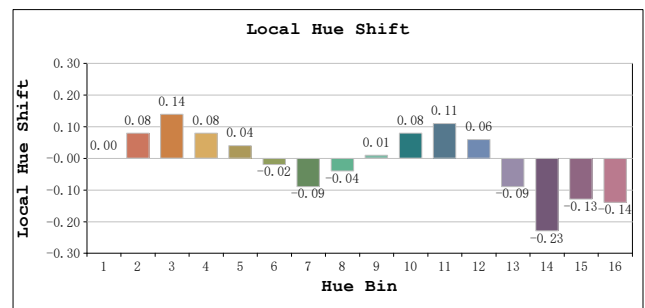
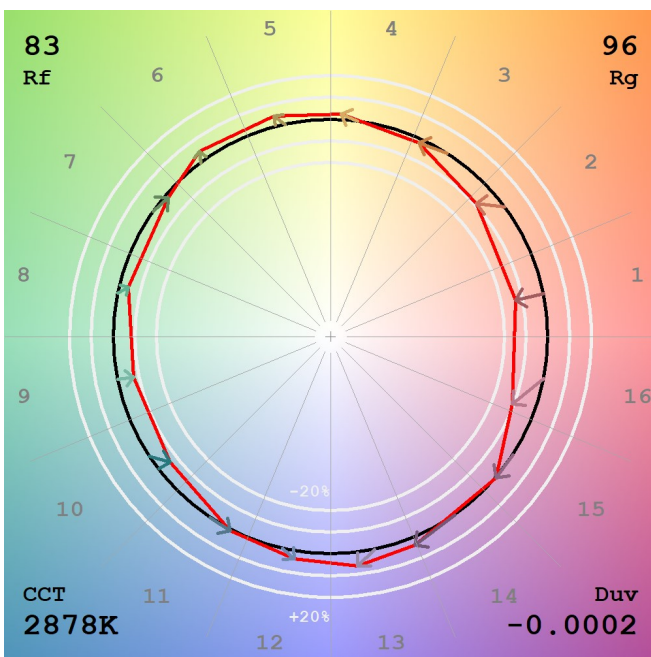
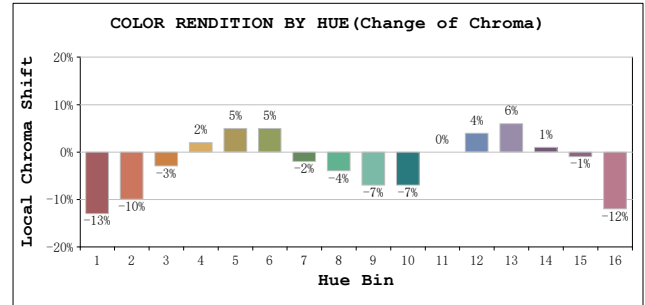
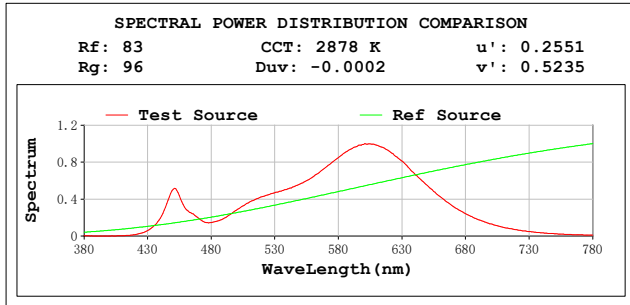
Electrical parameters:

V = 11.958 V I = 0.5198 A P = 6.215 W PF = 1.0000
 LEVEL:OUT WHITE:ANSI_3000K
 Status: Integral T = 140 ms Ip = 36413 (56%)

GBT5702

TM30

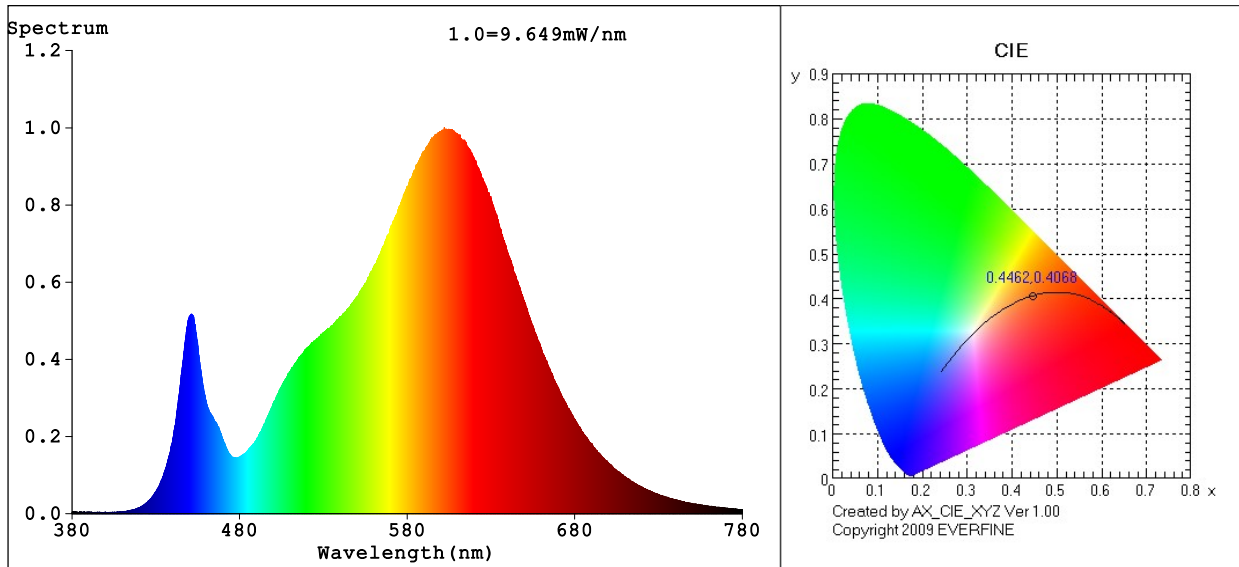
View Angle: 2 Deg



Model:AGL-560-30X120
 Tester:NC
 Temperature:25.3Deg
 Manufacturer:AQUALUX

Number:AGL-560-30X120 12VDC
 Date:2023-10-17 16:25:19
 Humidity:65.0%
 Remarks:12VDC

Spectrum Test Report



Color Parameters:

Chromaticity Coordinate: $x=0.4462$ $y=0.4068$ / $u'=0.2553$ $v'=0.5238$
 CCT=2872K (Duv=-0.0001) Dominant WL:Ld =583.4nm WL:Lc = --nm Purity=56.0%
 Ratio:R=23.6% G=74.1% B=2.3%; Peak WL:Lp=602.2nm FWHM=116.4nm
 Render Index:Ra=81.1 AvgR=75.2 TM30:Rf=83 Rg=96

R1 =79 R2 =90 R3 =96 R4 =79 R5 =80 R6 =89 R7 =81
 R8 =55 R9 =0 R10=78 R11=79 R12=70 R13=82 R14=98 R15=71

Photo Parameters:

Flux = 450.2 lm Eff. : 113.94 lm/W Fe = 1.343 W

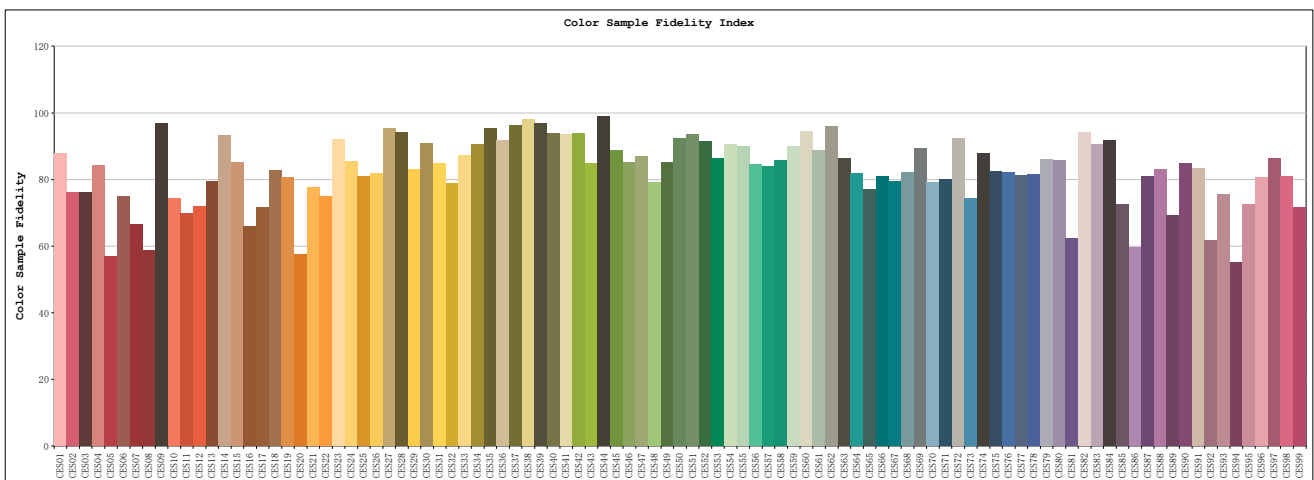
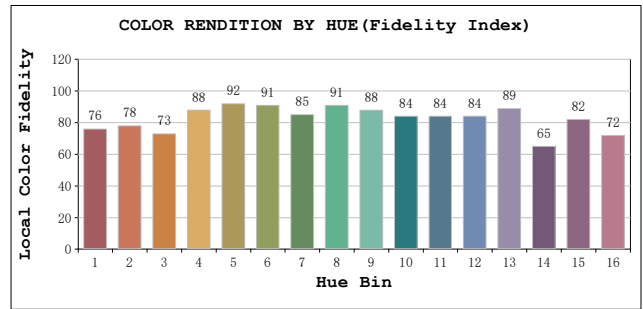
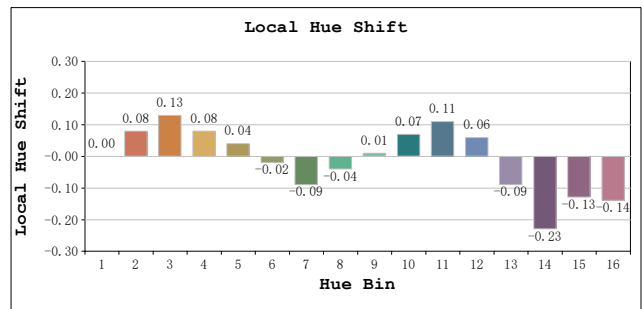
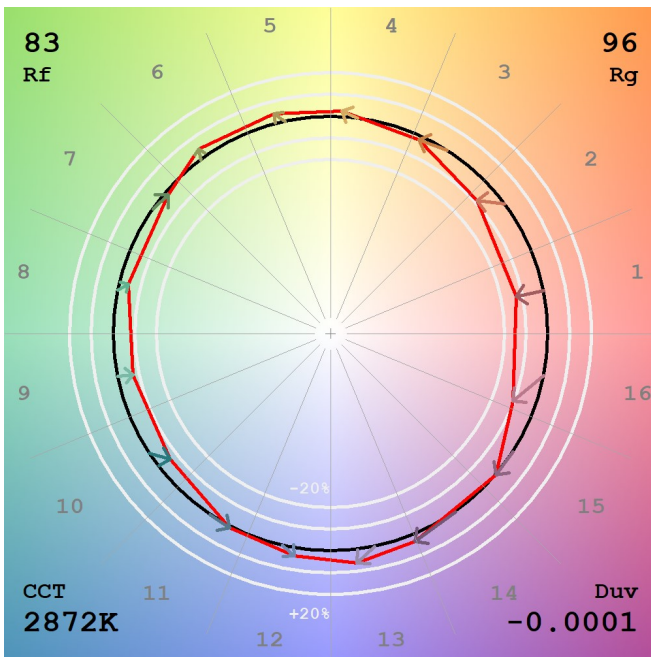
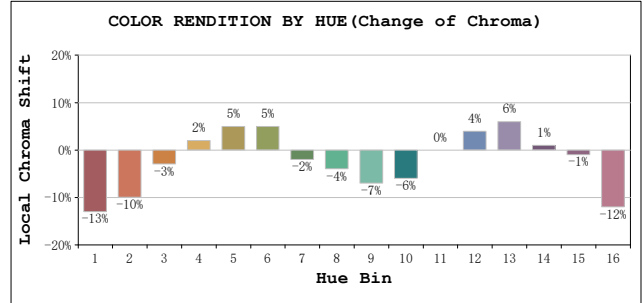
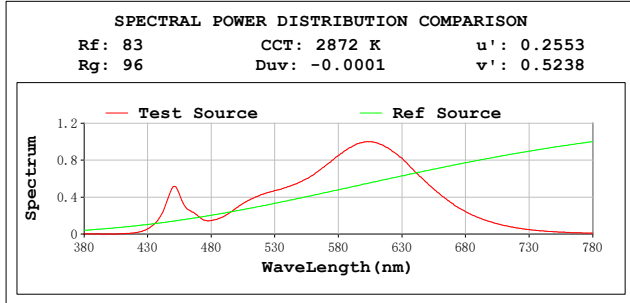
Electrical parameters:

V = 11.979 V I = 0.4221 A P = 3.951 W PF = 0.7815
 LEVEL:OUT WHITE:ANSI_3000K
 Status: Integral T = 303 ms Ip = 50942 (78%)

GBT5702

TM30

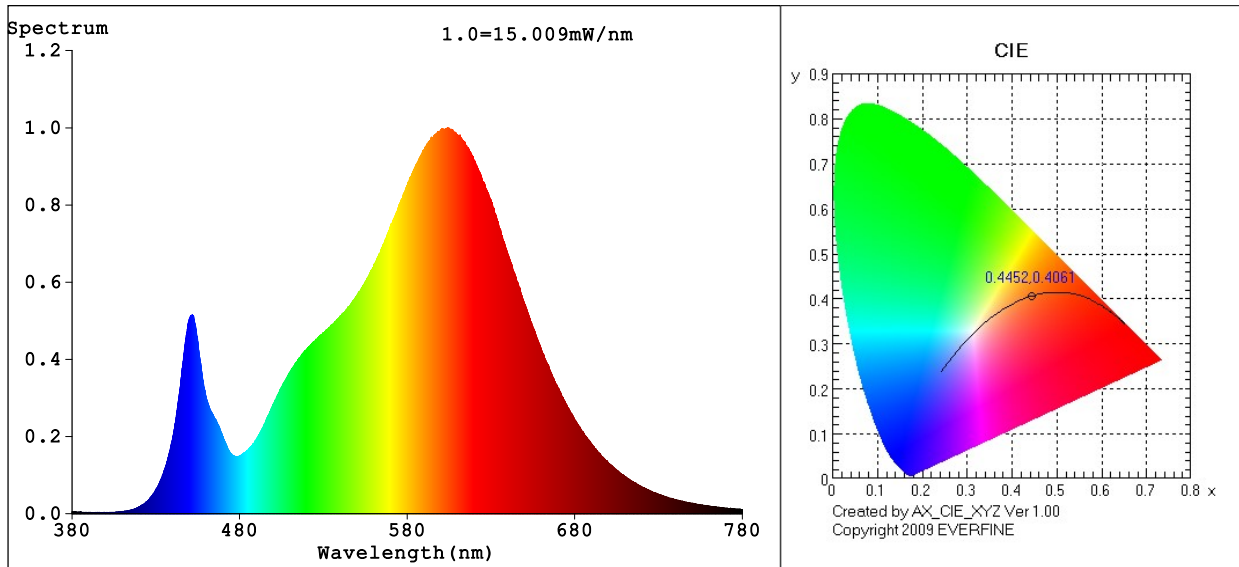
View Angle: 2 Deg



Model:AGL-560-30X120
 Tester:NC
 Temperature:25.3Deg
 Manufacturer:AQUALUX

Number:AGL-560-30X120 12VAC
 Date:2023-10-17 16:26:04
 Humidity:65.0%
 Remarks:12VAC

Spectrum Test Report



Color Parameters:

Chromaticity Coordinate: $x=0.4452$ $y=0.4061$ / $u'=0.2550$ $v'=0.5234$
 CCT=2883K (Duv=-0.0002) Dominant WL:Ld =583.4nm WL:Lc = --nm Purity=55.5%
 Ratio:R=23.5% G=74.2% B=2.3%; Peak WL:Lp=604.1nm FWHM=116.2nm
 Render Index:Ra=80.8 AvgR=74.9 TM30:Rf=83 Rg=96

R1 =79 R2 =90 R3 =96 R4 =79 R5 =79 R6 =88 R7 =81
 R8 =54 R9 =0 R10=78 R11=78 R12=70 R13=82 R14=98 R15=71

Photo Parameters:

Flux = 702.6 lm Eff. : 117.40 lm/W Fe = 2.097 W

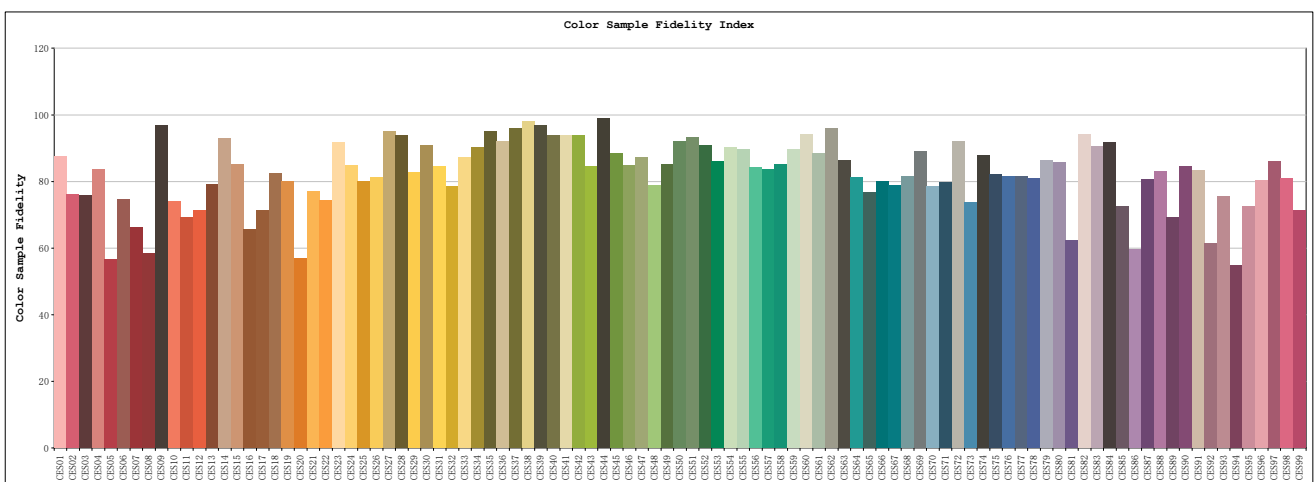
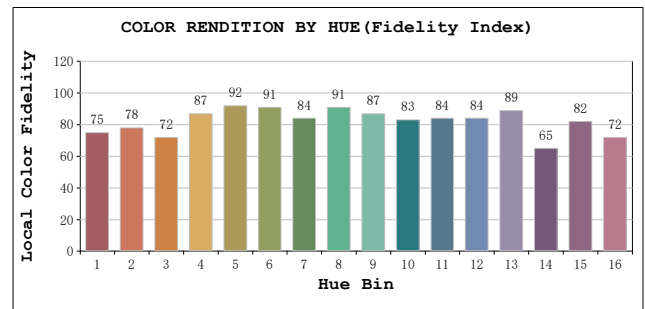
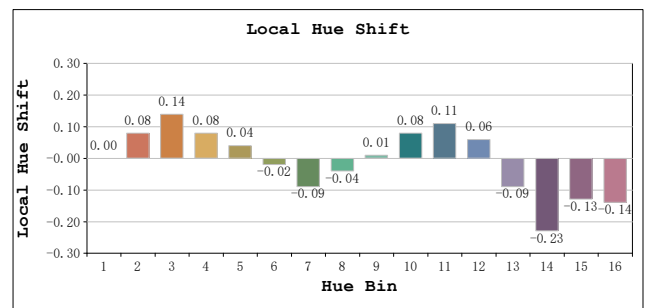
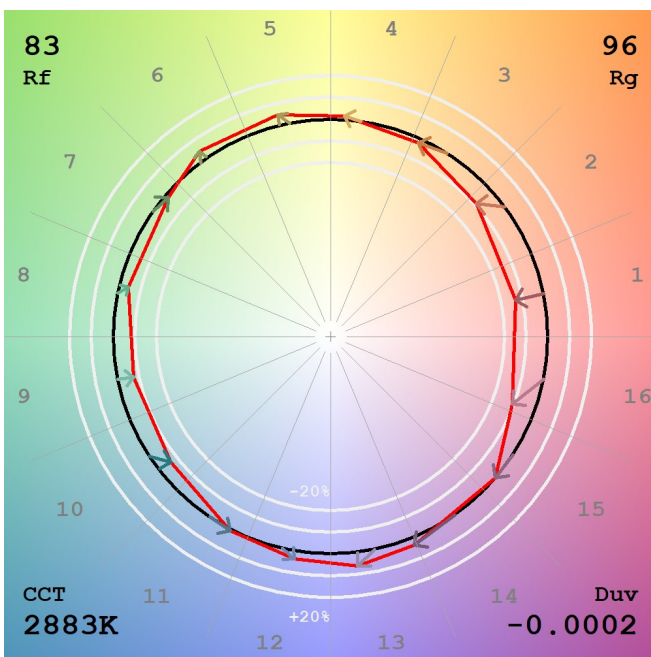
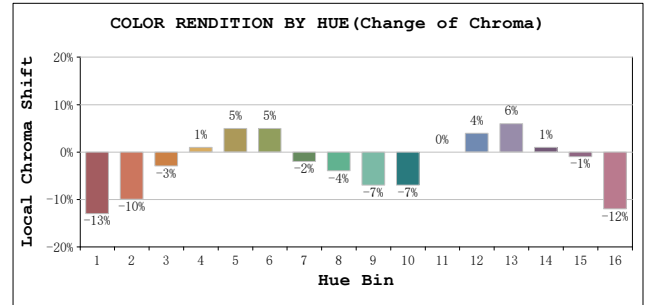
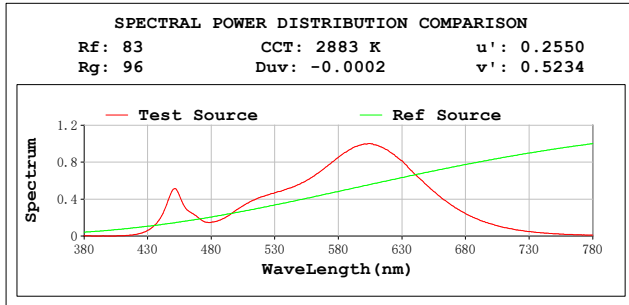
Electrical parameters:

V = 23.957 V I = 0.3847 A P = 5.985 W PF = 0.6493
 LEVEL:OUT WHITE:ANSI_3000K
 Status: Integral T = 151 ms Ip = 39536 (60%)

GBT5702

TM30

View Angle: 2 Deg



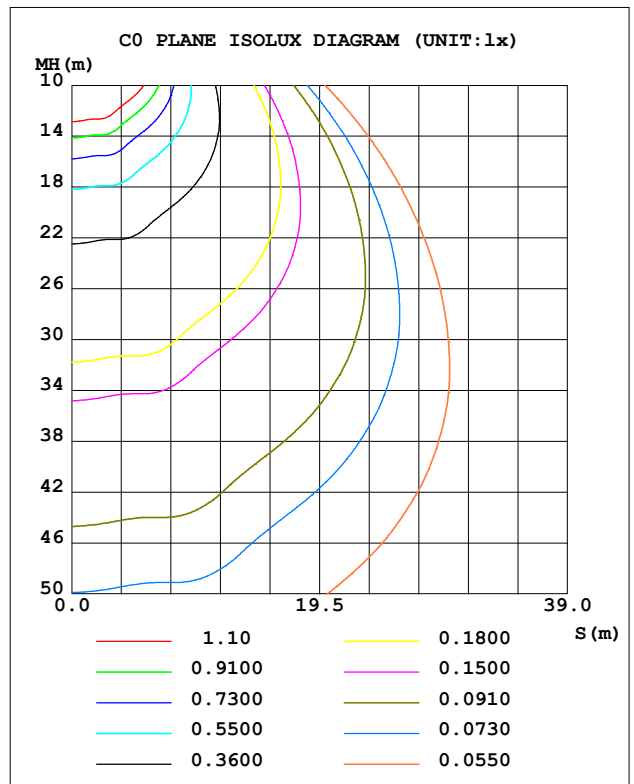
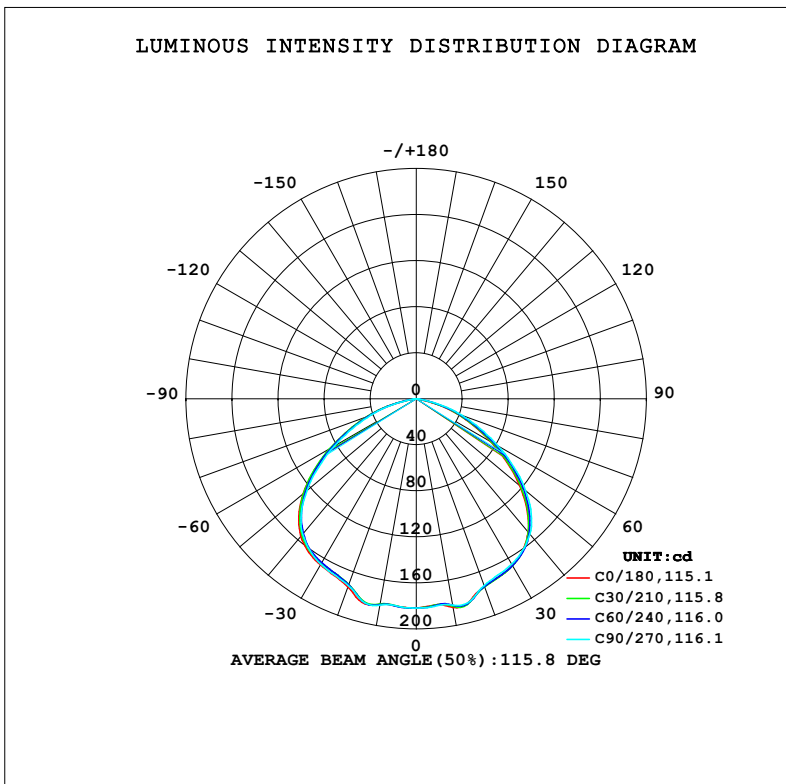
Model:AGL-560-30X120
 Tester:NC
 Temperature:25.3Deg
 Manufacturer:AQUALUX

Number:AGL-560-30X120 24VAC
 Date:2023-10-17 16:26:37
 Humidity:65.0%
 Remarks:24VAC

LUMINAIRE PHOTOMETRIC TEST REPORT

Test:U:23.784V I:0.2298A P:5.4656W PF:1.0000 Freq:0Hz		
UTHdi:0.00% ITHdi:0.00% KDisp:0 Lamp Flux:534.303x1 lm		
NAME: AGL-560-30X120	TYPE: MR16 GLOBE	WEIGHT: 100G
SPEC.: AGL-560-30X120	DIM.: 50MM	SERIAL No.:
MFR.: AQUALUX	SUR.:	Shielding Angle:

DATA OF LAMP		PHOTOMETRIC DATA			Eff: 97.76 lm/W
MODEL	AGL-560-30X120	I _{max} (cd)	185.5	S/MH (C0/180)	1.38
NOMINAL POWER (W)	6	LOR (%)	100.0	S/MH (C90/270)	1.37
RATED VOLTAGE (V)	24	TOTAL FLUX (lm)	534.30	η UP, DN (C0-180)	0.0, 49.9
NOMINAL FLUX (lm)	534.303	CIE CLASS	DIRECT	η UP, DN (C180-360)	0.0, 50.1
LAMPS INSIDE	1	η up (%)	0.0	CIBSE SHR NOM	1.50
TEST VOLTAGE (V)	24	η down (%)	100.0	CIBSE SHR MAX	1.55



C Range: 0 - 180DEG
 C Interval: 15.0DEG
 Test Speed: HIGH
 Temperature: 20°C
 Operators: NICK
 Test Date: 16 October 2023

γ Range: 0 - 90DEG
 γ Interval: 1.0DEG
 Test System: EVERFINE GO-SPEX500_V1 SYSTEM V2.00.473
 Humidity: 65.0%
 Test Distance: 3.100m [K=1.0000]
 Remarks: AGL-560-30X120

ZONAL FLUX DIAGRAM

ZONAL FLUX DIAGRAM:

γ	C0	C45	C90	C135	C180	C225	C270	C315	γ	∅ zone	∅ total	%lum, lamp
10	184.2	182.2	181.9	181.4	181.4	181.4	181.9	182.2	0- 10	17.26	17.26	3.23,3.23
20	173.4	173.8	172.7	171.5	174.0	171.5	172.7	173.8	10- 20	50.91	68.17	12.8,12.8
30	167.1	167.4	166.0	164.2	166.6	164.2	166.0	167.4	20- 30	78.21	146.4	27.4,27.4
40	151.3	151.7	153.6	153.5	156.1	153.5	153.6	151.7	30- 40	100.8	247.2	46.3,46.3
50	117.3	119.8	124.0	127.5	128.1	127.5	124.0	119.8	40- 50	107.9	355.1	66.5,66.5
60	74.87	77.91	82.26	87.80	85.94	87.80	82.26	77.91	50- 60	92.32	447.4	83.7,83.7
70	36.83	38.73	42.17	45.63	45.03	45.63	42.17	38.73	60- 70	60.37	507.8	95,95
80	3.180	3.970	5.635	7.192	6.647	7.192	5.635	3.970	70- 80	24.49	532.3	99.6,99.6
90	0.0733	0.0623	0.0595	0.0587	0.0583	0.0587	0.0595	0.0623	80- 90	2.015	534.3	100,100
100									90-100			
110									100-110			
120									110-120			
130									120-130			
140									130-140			
150									140-150			
160									150-160			
170									160-170			
180									170-180			
DEG	LUMINOUS INTENSITY:cd									UNIT:lm		

Conical surface Flux(90deg): 301.68 lm

%lum = 56.5%

%lamp = 56.5%

Conical surface Flux(130deg): 481.96 lm

%lum = 90.2%

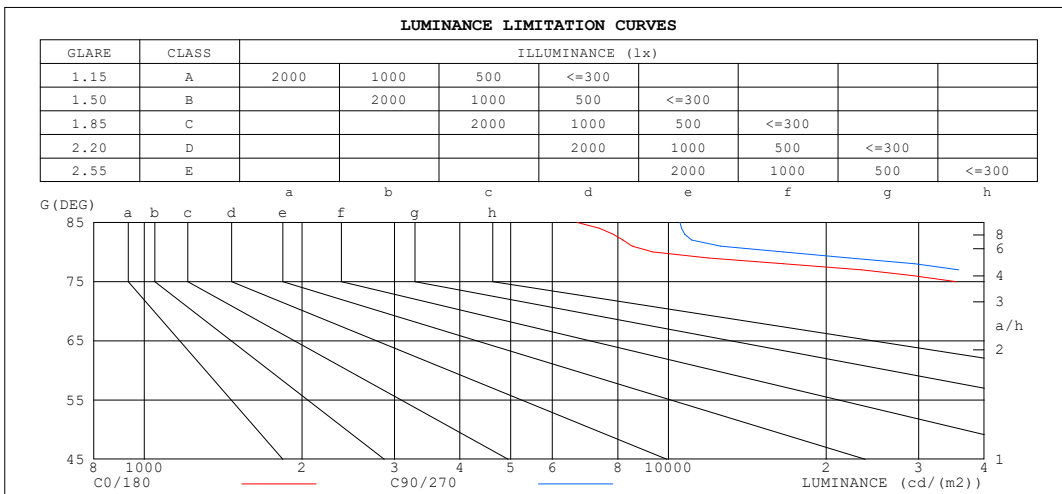
%lamp = 90.2%

C Range: 0 - 180DEG
 C Interval: 15.0DEG
 Test Speed: HIGH
 Temperature:20°C
 Operators:NICK
 Test Date:16 October 2023

γ Range: 0 - 90DEG
 γ Interval: 1.0DEG
 Test System:EVERFINE GO-SPEX500_V1 SYSTEM V2.00.473
 Humidity:65.0%
 Test Distance:3.100m [K=1.0000]
 Remarks: AGL-560-30X120

LUMINANCE LIMITATION CURVES

Test:U:23.784V I:0.2298A P:5.4656W PF:1.0000 Freq:0Hz UTHDi:0.00% ITHDi:0.00% KDisp:0 Lamp Flux:534.303x1 lm		
NAME: AGL-560-30X120	TYPE: MR16 GLOBE	WEIGHT: 100G
SPEC.: AGL-560-30X120	DIM.: 50MM	SERIAL No.:
MFR.: AQUALUX	SUR.:	Shielding Angle:



LUMINANCE cd/(m2)		
G (DEG)	C0/180	C90/270
85	6692	10513
80	9332	16523
75	35361	47265
70	54872	62773
65	65885	73805
60	76310	83770
55	85562	92049
50	93016	98228
45	98070	101751

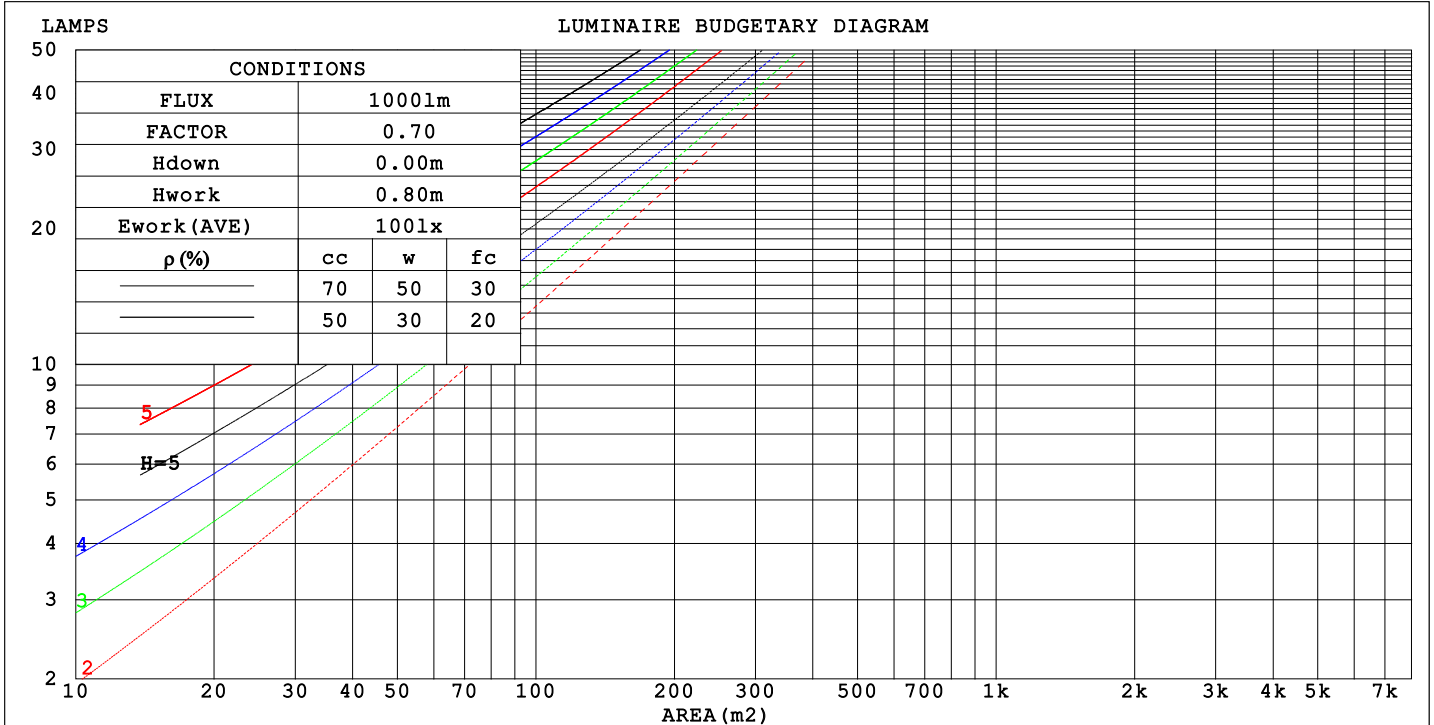
C Range: 0 - 180DEG
 C Interval: 15.0DEG
 Test Speed: HIGH
 Temperature:20°C
 Operator:NICK
 Test Date:16 October 2023

γ Range: 0 - 90DEG
 γ Interval: 1.0DEG
 Test System:EVERFINE GO-SPEX500_V1 SYSTEM V2.00.473
 Humidity:65.0%
 Test Distance:3.100m [K=1.0000]
 Remarks: AGL-560-30X120

CU AND LUMINAIRE BUDGETARY ESTIMATE DIAGRAM

Test:U:23.784V I:0.2298A P:5.4656W PF:1.0000 Freq:0Hz		
UTHDi:0.00% ITHDi:0.00% KDisp:0 Lamp Flux:534.303x1 lm		
NAME: AGL-560-30X120	TYPE: MR16 GLOBE	WEIGHT: 100G
SPEC.: AGL-560-30X120	DIM.: 50MM	SERIAL No.:
MFR.: AQUALUX	SUR.:	Shielding Angle:

ρ cc	80%			70%			50%			30%			10%			0
ρ w	50%	30%	10%	50%	30%	10%	50%	30%	10%	50%	30%	10%	50%	30%	10%	0
ρ fc	20%			20%			20%			20%			20%			0
RCR	RCR:Room Cavity Ratio						Coefficients of Utilization (CU)									
0.0	1.19	1.19	1.19	1.16	1.16	1.16	1.11	1.11	1.11	1.06	1.06	1.06	1.02	1.02	1.02	1.00
1.0	1.05	1.01	.98	1.03	.90	.96	.99	.96	.93	.95	.93	.90	.91	.90	.88	.86
2.0	.92	.86	.80	.90	.85	.79	.87	.82	.78	.84	.80	.76	.81	.77	.74	.72
3.0	.81	.73	.67	.80	.72	.67	.77	.70	.65	.74	.69	.64	.71	.67	.63	.61
4.0	.72	.63	.57	.71	.63	.57	.68	.61	.56	.66	.60	.55	.64	.59	.54	.52
5.0	.64	.55	.49	.63	.55	.49	.61	.54	.48	.59	.53	.48	.57	.52	.47	.45
6.0	.58	.49	.43	.57	.48	.42	.55	.48	.42	.53	.47	.42	.52	.46	.41	.39
7.0	.52	.44	.38	.51	.43	.37	.50	.43	.37	.48	.42	.37	.47	.41	.37	.35
8.0	.48	.39	.33	.47	.39	.33	.46	.38	.33	.44	.38	.33	.43	.37	.33	.31
9.0	.44	.35	.30	.43	.35	.30	.42	.35	.30	.41	.34	.30	.40	.34	.29	.28
10.0	.40	.32	.27	.40	.32	.27	.39	.32	.27	.38	.31	.27	.37	.31	.27	.25



C Range: 0 - 180DEG
 C Interval: 15.0DEG
 Test Speed: HIGH
 Temperature: 20°C
 Operators: NICK
 Test Date: 16 October 2023

γ Range: 0 - 90DEG
 γ Interval: 1.0DEG
 Test System: EVERFINE GO-SPEX500_V1 SYSTEM V2.00.473
 Humidity: 65.0%
 Test Distance: 3.100m [K=1.0000]
 Remarks: AGL-560-30X120

WEC AND CCEC

Test:U:23.784V I:0.2298A P:5.4656W PF:1.0000 Freq:0Hz		
UTHDi:0.00% ITHDi:0.00% KDisp:0 Lamp Flux:534.303x1 lm		
NAME: AGL-560-30X120	TYPE: MR16 GLOBE	WEIGHT: 100G
SPEC.: AGL-560-30X120	DIM.: 50MM	SERIAL No.:
MFR.: AQUALUX	SUR.:	Shielding Angle:

ρcc	80%			70%			50%			30%			10%			0
ρw	50%	30%	10%	50%	30%	10%	50%	30%	10%	50%	30%	10%	50%	30%	10%	0
ρfc	20%			20%			20%			20%			20%			0
RCR	RCR:Room Cavity Ratio						Wall Exitance Coefficients (WEC)									
0.0																
1.0	.282	.160	.051	.275	.157	.050	.262	.150	.048	.249	.144	.046	.238	.138	.045	
2.0	.274	.150	.046	.268	.147	.045	.256	.142	.044	.245	.138	.043	.236	.133	.042	
3.0	.258	.137	.041	.252	.135	.041	.242	.131	.040	.233	.128	.039	.224	.124	.038	
4.0	.241	.125	.037	.236	.124	.037	.227	.120	.036	.219	.117	.035	.211	.114	.035	
5.0	.224	.114	.033	.220	.113	.033	.212	.110	.033	.205	.108	.032	.198	.106	.032	
6.0	.209	.105	.030	.206	.104	.030	.198	.102	.030	.192	.100	.029	.185	.098	.029	
7.0	.196	.097	.027	.192	.096	.027	.186	.094	.027	.180	.092	.027	.174	.091	.027	
8.0	.183	.090	.025	.180	.089	.025	.175	.087	.025	.169	.086	.025	.164	.084	.025	
9.0	.172	.083	.023	.170	.083	.023	.164	.081	.023	.160	.080	.023	.155	.079	.023	
10.0	.162	.078	.022	.160	.077	.022	.155	.076	.021	.151	.075	.021	.147	.074	.021	

ρcc	80%			70%			50%			30%			10%			0
ρw	50%	30%	10%	50%	30%	10%	50%	30%	10%	50%	30%	10%	50%	30%	10%	0
ρfc	20%			20%			20%			20%			20%			0
RCR	RCR:Room Cavity Ratio						Ceiling Cavity Exitance Coefficients (CCEC)									
0.0	.190	.190	.190	.163	.163	.163	.111	.111	.111	.064	.064	.064	.020	.020	.020	
1.0	.178	.156	.137	.153	.134	.118	.104	.092	.081	.060	.053	.047	.019	.017	.015	
2.0	.170	.132	.100	.145	.114	.087	.100	.079	.060	.057	.046	.035	.018	.015	.012	
3.0	.162	.114	.076	.139	.099	.066	.095	.068	.046	.055	.040	.027	.018	.013	.009	
4.0	.155	.101	.060	.133	.087	.052	.091	.061	.036	.053	.036	.022	.017	.012	.007	
5.0	.148	.090	.048	.127	.078	.042	.087	.055	.030	.051	.032	.018	.016	.010	.006	
6.0	.141	.082	.040	.121	.071	.035	.084	.050	.024	.048	.029	.015	.016	.010	.005	
7.0	.134	.075	.034	.115	.065	.029	.080	.046	.021	.046	.027	.012	.015	.009	.004	
8.0	.128	.069	.029	.110	.060	.025	.076	.042	.018	.044	.025	.011	.014	.008	.004	
9.0	.122	.064	.025	.105	.056	.022	.073	.039	.016	.042	.023	.009	.014	.008	.003	
10.0	.117	.060	.023	.101	.052	.020	.070	.037	.014	.041	.022	.008	.013	.007	.003	

C Range: 0 - 180DEG
 C Interval: 15.0DEG
 Test Speed: HIGH
 Temperature:20°C
 Operators:NICK
 Test Date:16 October 2023

γ Range: 0 - 90DEG
 γ Interval: 1.0DEG
 Test System:EVERFINE GO-SPEX500_V1 SYSTEM V2.00.473
 Humidity:65.0%
 Test Distance:3.100m [K=1.0000]
 Remarks: AGL-560-30X120

UGR(Unified Glare Rating) Table

Test:U:23.784V I:0.2298A P:5.4656W PF:1.0000 Freq:0Hz										
UTHDi:0.00% ITHDi:0.00% KDisp:0 Lamp Flux:534.303x1 lm										
NAME: AGL-560-30X120					TYPE: MR16 GLOBE			WEIGHT: 100G		
SPEC.: AGL-560-30X120					DIM.: 50MM			SERIAL No.:		
MFR.: AQUALUX					SUR.:			Shielding Angle:		
ceiling/cavity	0.7	0.7	0.5	0.5	0.3	0.7	0.7	0.5	0.5	0.3
walls	0.5	0.3	0.5	0.3	0.3	0.5	0.3	0.5	0.3	0.3
working plane	0.2	0.2	0.2	0.2	0.2	0.2	0.2	0.2	0.2	0.2
Room dimensions	Viewed crosswise					Viewed endwise				
x = 2H y = 2H	30.4	31.9	30.7	32.1	32.3	30.8	32.2	31.0	32.4	32.6
3H	31.4	32.7	31.7	33.0	33.2	31.8	33.2	32.1	33.4	33.6
4H	31.6	32.9	31.9	33.1	33.4	32.1	33.4	32.4	33.6	33.9
6H	31.5	32.7	31.8	33.0	33.3	32.1	33.3	32.4	33.6	33.9
8H	31.5	32.6	31.8	32.9	33.2	32.1	33.2	32.4	33.5	33.8
12H	31.4	32.5	31.8	32.8	33.1	32.0	33.1	32.4	33.4	33.7
4H 2H	30.9	32.2	31.2	32.4	32.7	31.2	32.5	31.5	32.7	33.0
3H	32.0	33.1	32.3	33.4	33.7	32.3	33.5	32.7	33.8	34.1
4H	32.2	33.3	32.6	33.6	33.9	32.7	33.7	33.1	34.0	34.4
6H	32.2	33.1	32.6	33.5	33.8	32.7	33.6	33.1	34.0	34.4
8H	32.2	33.0	32.6	33.4	33.8	32.7	33.5	33.1	33.9	34.3
12H	32.1	32.9	32.6	33.3	33.7	32.7	33.4	33.1	33.8	34.2
8H 4H	32.3	33.1	32.7	33.5	33.9	32.7	33.6	33.1	33.9	34.3
6H	32.3	33.0	32.7	33.4	33.8	32.8	33.5	33.2	33.9	34.3
8H	32.3	32.9	32.7	33.3	33.7	32.8	33.4	33.2	33.8	34.3
12H	32.2	32.7	32.7	33.2	33.7	32.7	33.3	33.2	33.7	34.2
12H 4H	32.3	33.0	32.7	33.4	33.8	32.7	33.5	33.1	33.8	34.2
6H	32.3	32.9	32.7	33.3	33.7	32.8	33.4	33.2	33.8	34.2
8H	32.2	32.7	32.7	33.2	33.7	32.7	33.3	33.2	33.7	34.2
Variations with the observer position at spacings(CIE Pub.117):										
S = 1.0H	+ 0.3 / - 0.4					+ 0.3 / - 0.3				
1.5H	+ 0.3 / - 0.6					+ 0.3 / - 0.5				
2.0H	+ 0.6 / - 0.6					+ 0.6 / - 0.6				

CIE Pub.117, 534.3 lm Total Lamp Luminous Flux Correct (8log(F/F0) = -2.2)
 Area: 0.001963 m2

C Range: 0 - 180DEG
 C Interval: 15.0DEG
 Test Speed: HIGH
 Temperature:20°C
 Operators:NICK
 Test Date:16 October 2023

γ Range: 0 - 90DEG
 γ Interval: 1.0DEG
 Test System:EVERFINE GO-SPEX500_V1 SYSTEM V2.00.473
 Humidity:65.0%
 Test Distance:3.100m [K=1.0000]
 Remarks: AGL-560-30X120

UTILIZATION FACTORS TABLE

Test:U:23.784V I:0.2298A P:5.4656W PF:1.0000 Freq:0Hz		
UTHDi:0.00% ITHDi:0.00% KDisp:0 Lamp Flux:534.303x1 lm		
NAME: AGL-560-30X120	TYPE: MR16 GLOBE	WEIGHT: 100G
SPEC.: AGL-560-30X120	DIM.: 50MM	SERIAL No.:
MFR.: AQUALUX	SUR.:	Shielding Angle:

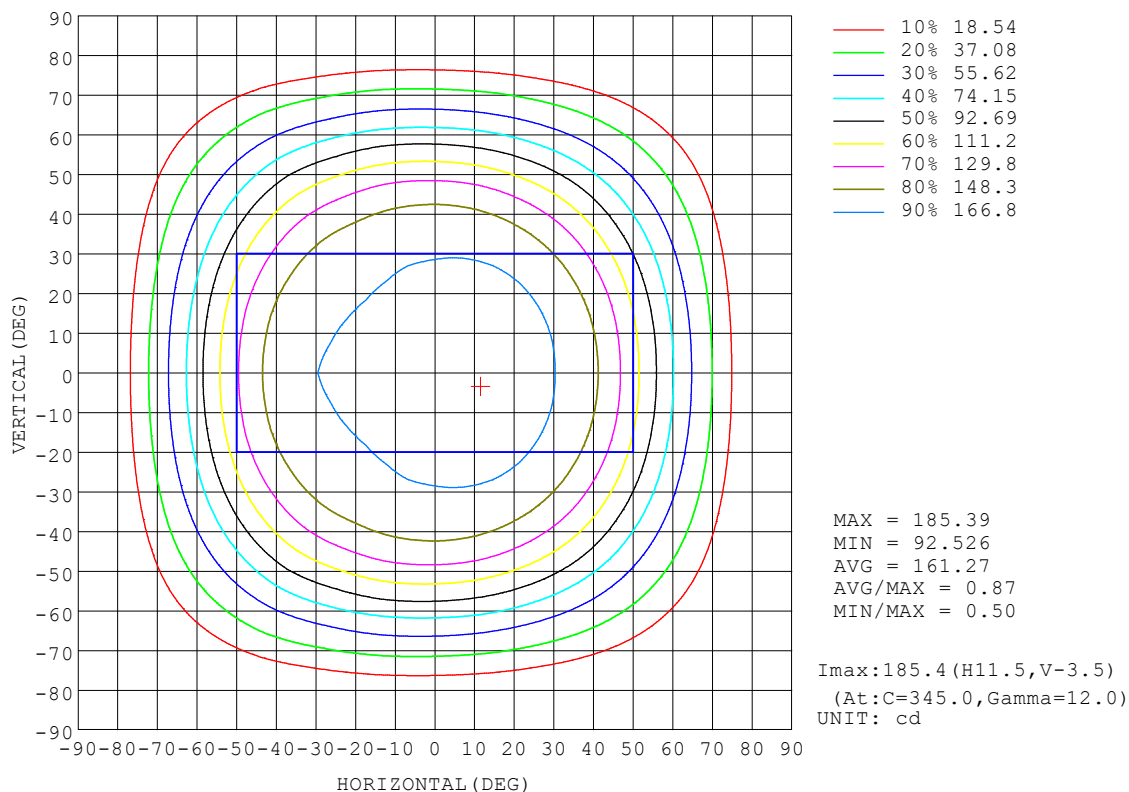
REFLECTANCE										
Ceiling	0.8	0.8	0.8	0.7	0.7	0.7	0.5	0.5	0.5	0
Walls	0.7	0.5	0.3	0.7	0.5	0.3	0.7	0.5	0.3	0
Working plane	0.2	0.2	0.2	0.2	0.2	0.2	0.2	0.2	0.2	0
ROOM INDEX	UTILIZATION FACTORS (PERCENT) $k(RI) \times RCR = 5$									
k = 0.60	58	46	40	57	46	39	56	46	39	33
0.80	69	57	50	68	57	50	66	56	49	43
1.00	77	67	60	76	66	59	74	67	59	52
1.25	85	75	68	83	74	67	81	73	67	60
1.50	90	80	74	88	80	73	85	78	72	65
2.00	97	89	83	95	87	82	91	85	80	73
2.50	100	93	87	98	92	87	95	89	85	77
3.00	104	97	92	102	96	91	98	93	89	81
4.00	107	102	98	105	100	97	101	97	94	85
5.00	110	105	101	107	103	100	103	100	97	88
ROOM INDEX	UF(total)									Direct
According to DIN EN 13032-2 2004			Suspended				SHRNOM = 1.25			

C Range: 0 - 180DEG
 C Interval: 15.0DEG
 Test Speed: HIGH
 Temperature:20°C
 Operators:NICK
 Test Date:16 October 2023

γ Range: 0 - 90DEG
 γ Interval: 1.0DEG
 Test System:EVERFINE GO-SPEX500_V1 SYSTEM V2.00.473
 Humidity:65.0%
 Test Distance:3.100m [K=1.0000]
 Remarks: AGL-560-30X120

ISOCANDELA DIAGRAM

Test:U:23.784V I:0.2298A P:5.4656W PF:1.0000 Freq:0Hz UTHDi:0.00% ITHDi:0.00% KDisp:0 Lamp Flux:534.303x1 lm		
NAME: AGL-560-30X120	TYPE: MR16 GLOBE	WEIGHT: 100G
SPEC.: AGL-560-30X120	DIM.: 50MM	SERIAL No.:
MFR.: AQUALUX	SUR.:	Shielding Angle:



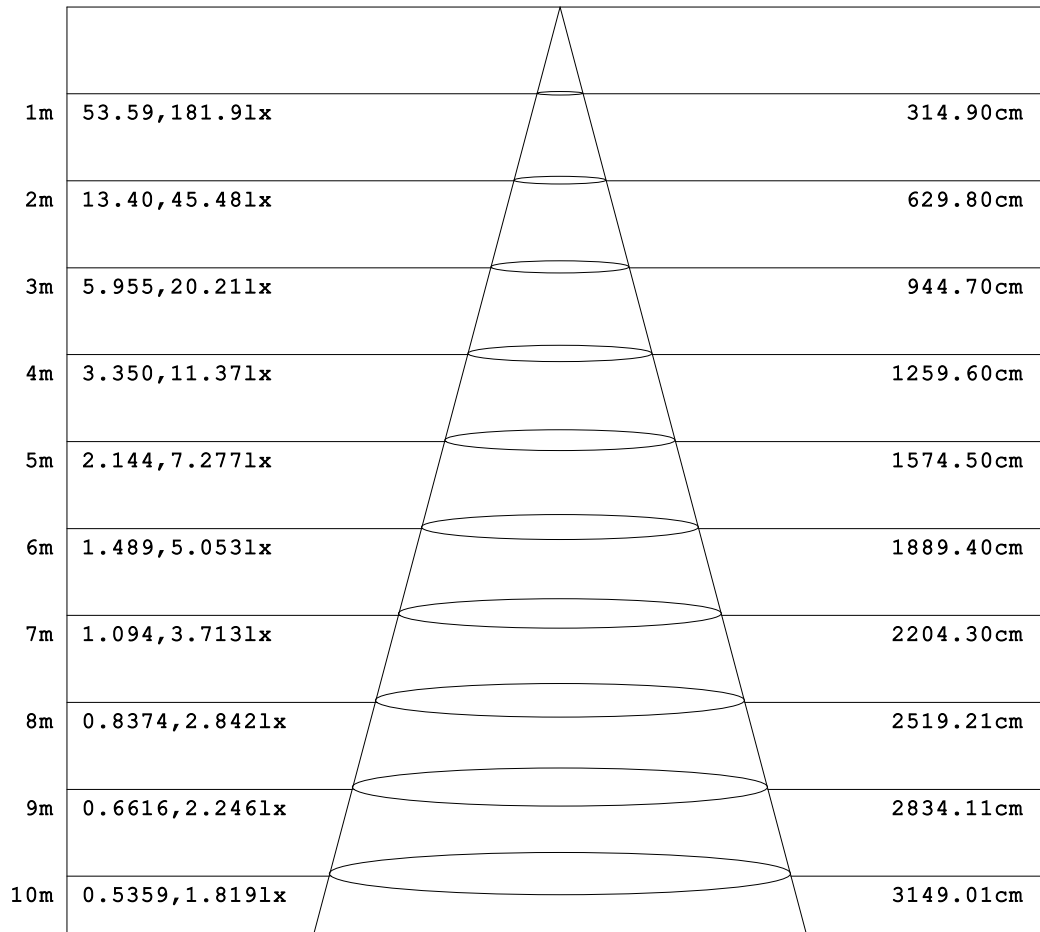
C Range: 0 - 180DEG
 C Interval: 15.0DEG
 Test Speed: HIGH
 Temperature:20°C
 Operators:NICK
 Test Date:16 October 2023

γ Range: 0 - 90DEG
 γ Interval: 1.0DEG
 Test System:EVERFINE GO-SPEX500_V1 SYSTEM V2.00.473
 Humidity:65.0%
 Test Distance:3.100m [K=1.0000]
 Remarks: AGL-560-30X120

AAI Figure

Test:U:23.784V I:0.2298A P:5.4656W PF:1.0000 Freq:0Hz		
UTHDi:0.00% ITHDi:0.00% KDisp:0 Lamp Flux:534.303x1 lm		
NAME: AGL-560-30X120	TYPE: MR16 GLOBE	WEIGHT: 100G
SPEC.: AGL-560-30X120	DIM.: 50MM	SERIAL No.:
MFR.: AQUALUX	SUR.:	Shielding Angle:

Flux out:431.2 lm



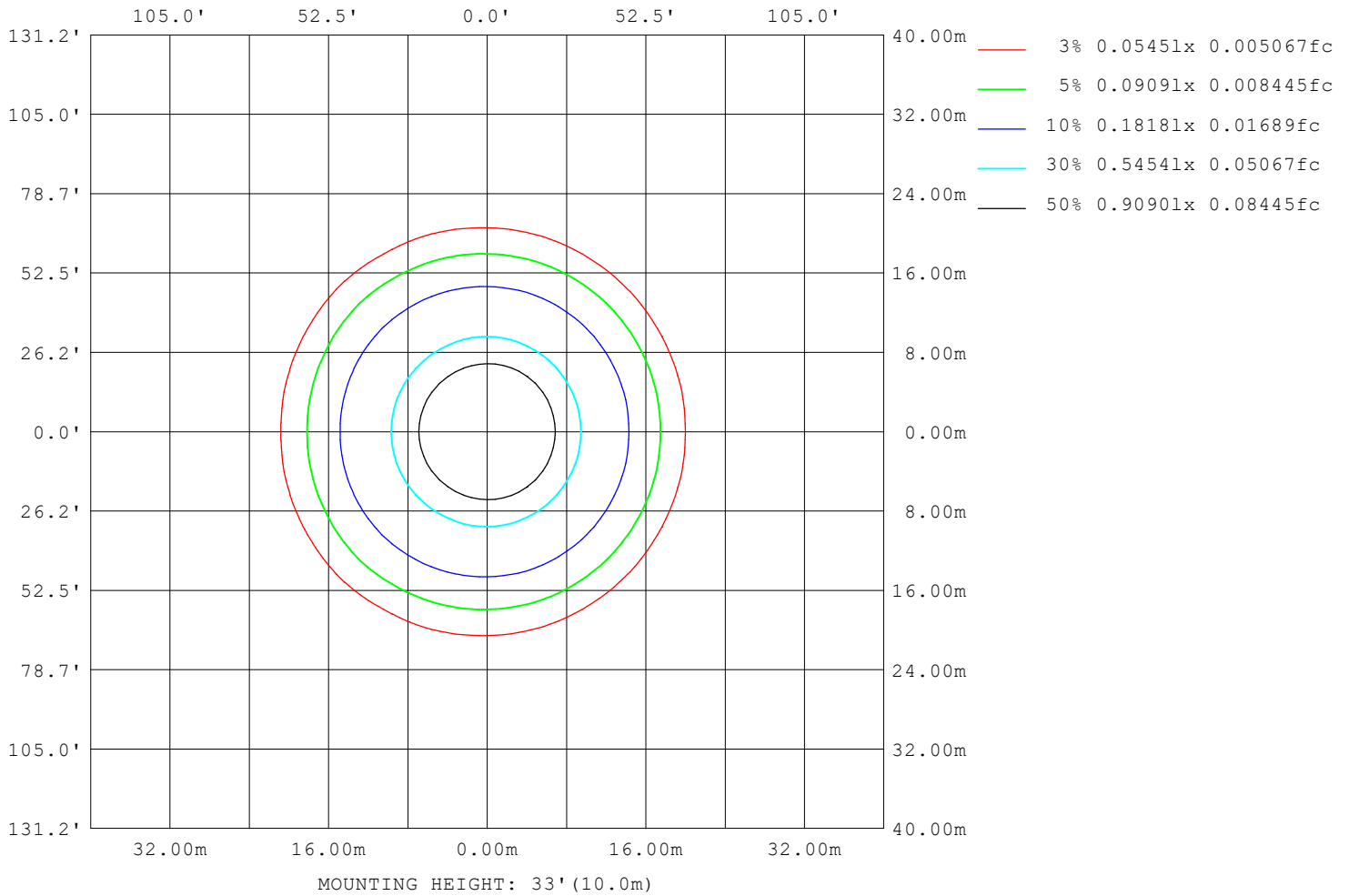
Note: The Curves indicate the illuminated area and the average illumination when the luminaire is at different distance.

C Range: 0 - 180DEG
 C Interval: 15.0DEG
 Test Speed: HIGH
 Temperature: 20°C
 Operators: NICK
 Test Date: 16 October 2023

γ Range: 0 - 90DEG
 γ Interval: 1.0DEG
 Test System: EVERFINE GO-SPEX500_V1 SYSTEM V2.00.473
 Humidity: 65.0%
 Test Distance: 3.100m [K=1.0000]
 Remarks: AGL-560-30X120

ISOLUX DIAGRAM

Test:U:23.784V I:0.2298A P:5.4656W PF:1.0000 Freq:0Hz		
UTHDi:0.00% ITHDi:0.00% KDisp:0 Lamp Flux:534.303x1 lm		
NAME: AGL-560-30X120	TYPE: MR16 GLOBE	WEIGHT: 100G
SPEC.: AGL-560-30X120	DIM.: 50MM	SERIAL No.:
MFR.: AQUALUX	SUR.:	Shielding Angle:



C Range: 0 - 180DEG
 C Interval: 15.0DEG
 Test Speed: HIGH
 Temperature:20°C
 Operators:NICK
 Test Date:16 October 2023

γ Range: 0 - 90DEG
 γ Interval: 1.0DEG
 Test System:EVERFINE GO-SPEX500_V1 SYSTEM V2.00.473
 Humidity:65.0%
 Test Distance:3.100m [K=1.0000]
 Remarks: AGL-560-30X120

LED Avg.L Report

Test:U:23.784V I:0.2298A P:5.4656W PF:1.0000 Freq:0Hz UTHDi:0.00% ITHDi:0.00% KDisp:0 Lamp Flux:534.303x1 lm		
NAME: AGL-560-30X120	TYPE: MR16 GLOBE	WEIGHT: 100G
SPEC.: AGL-560-30X120	DIM.: 50MM	SERIAL No.:
MFR.: AQUALUX	SUR.:	Shielding Angle:

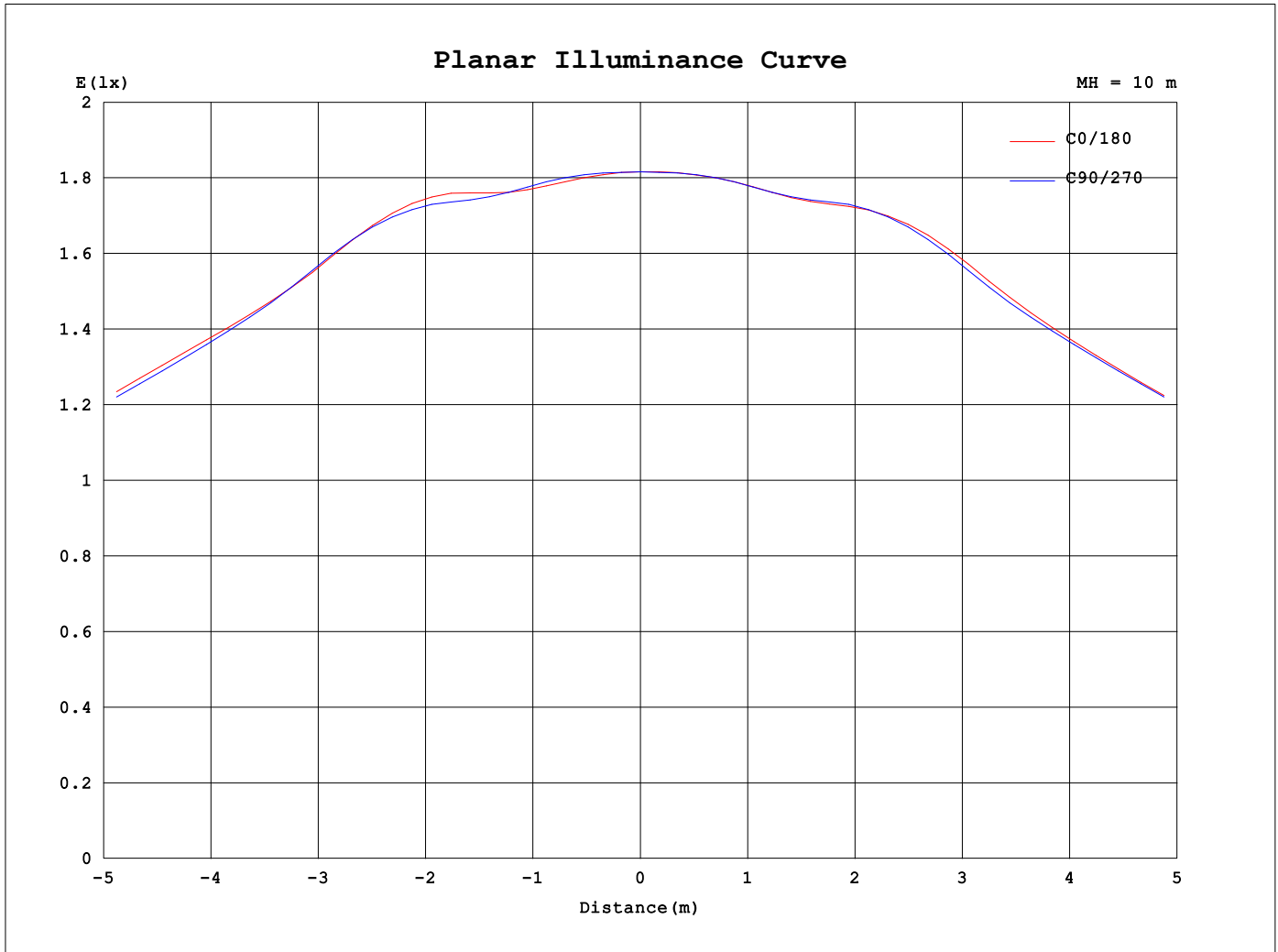
AvgL	cd/m2
L_0~180 (65) av	71769
L_0~180 (75) av	43455
L_0~180 (85) av	8977
L_90~270 (65) av	73841
L_90~270 (75) av	47288
L_90~270 (85) av	10518
L_45 (65) av	73835
L_45 (75) av	46753
L_45 (85) av	10005

Standard: GB/T 29293-2012

C Range: 0 - 180DEG
 C Interval: 15.0DEG
 Test Speed: HIGH
 Temperature:20°C
 Operators:NICK
 Test Date:16 October 2023

γ Range: 0 - 90DEG
 γ Interval: 1.0DEG
 Test System:EVERFINE GO-SPEX500_V1 SYSTEM V2.00.473
 Humidity:65.0%
 Test Distance:3.100m [K=1.0000]
 Remarks: AGL-560-30X120

Planar Illuminance Curve



C Range: 0 - 180DEG
 C Interval: 15.0DEG
 Test Speed: HIGH
 Temperature: 20°C
 Operator: NICK
 Test Date: 16 October 2023

γ Range: 0 - 90DEG
 γ Interval: 1.0DEG
 Test System: EVERFINE GO-SPEX500_V1 SYSTEM V2.00.473
 Humidity: 65.0%
 Test Distance: 3.100m [K=1.0000]
 Remarks: AGL-560-30X120

LUMINOUS DISTRIBUTION INTENSITY DATA

Test:U:23.784V I:0.2298A P:5.4656W PF:1.0000 Freq:0Hz		
UTHDi:0.00% ITHDi:0.00% KDisp:0 Lamp Flux:534.303x1 lm		
NAME: AGL-560-30X120	TYPE: MR16 GLOBE	WEIGHT: 100G
SPEC.: AGL-560-30X120	DIM.: 50MM	SERIAL No.:
MFR.: AQUALUX	SUR.:	Shielding Angle:

Table--1

UNIT: cd

C (DEG) \ γ (DEG)	0	15	30	45	60	75	90	105	120	135	150	165	180	195	210	225	240	255	270
0	182	182	182	182	182	182	182	182	182	182	182	182	182	182	182	182	182	182	182
5	180	180	180	180	181	181	181	181	181	181	181	181	181	181	181	181	181	181	181
10	184	184	183	182	182	182	182	182	182	181	181	181	181	181	181	181	182	182	182
15	182	182	182	182	182	182	182	182	182	182	181	182	183	182	181	182	182	182	182
20	173	174	174	174	174	173	173	172	172	172	172	173	174	173	172	172	172	172	173
25	171	171	171	171	170	170	169	168	167	167	167	168	169	168	167	167	167	168	169
30	167	167	168	167	167	167	166	165	164	164	165	165	167	165	165	164	164	165	166
35	161	161	162	162	162	162	161	161	160	161	161	162	163	162	161	161	160	161	161
40	151	151	151	152	153	154	154	153	153	154	155	156	156	156	155	154	153	153	154
45	136	137	137	138	139	141	141	141	141	143	143	144	144	144	143	143	141	141	141
50	117	118	119	120	122	123	124	125	126	127	128	128	128	128	128	127	126	125	124
55	96.3	97.2	97.9	99.5	101	103	104	105	107	109	109	109	108	109	109	109	107	105	104
60	74.9	75.6	76.3	77.9	79.2	80.9	82.3	84.1	84.9	87.8	87.1	86.6	85.9	86.6	87.1	87.8	84.9	84.1	82.3
65	54.6	55.1	55.6	56.8	58.2	59.9	61.3	63.0	63.3	65.7	65.1	65.1	64.4	65.1	65.1	65.7	63.3	63.0	61.3
70	36.8	37.4	37.8	38.7	39.8	41.4	42.2	43.5	44.1	45.6	45.4	45.3	45.0	45.3	45.4	45.6	44.1	43.5	42.2
75	18.0	18.9	19.3	20.5	21.6	23.0	24.0	25.2	25.5	27.0	26.7	26.9	26.2	26.9	26.7	27.0	25.5	25.2	24.0
80	3.18	3.37	3.57	3.97	4.46	5.12	5.63	6.14	6.33	7.19	7.03	6.98	6.65	6.98	7.03	7.19	6.33	6.14	5.63
85	1.14	1.16	1.23	1.32	1.43	1.63	1.80	1.91	1.94	2.11	2.05	2.01	1.93	2.01	2.05	2.11	1.94	1.91	1.80
90	0.07	0.07	0.07	0.06	0.06	0.06	0.06	0.06	0.06	0.06	0.06	0.06	0.06	0.06	0.06	0.06	0.06	0.06	0.06

C Range: 0 - 180DEG
 C Interval: 15.0DEG
 Test Speed: HIGH
 Temperature:20°C
 Operators:NICK
 Test Date:16 October 2023

γ Range: 0 - 90DEG
 γ Interval: 1.0DEG
 Test System:EVERFINE GO-SPEX500_V1 SYSTEM V2.00.473
 Humidity:65.0%
 Test Distance:3.100m [K=1.0000]
 Remarks: AGL-560-30X120

LUMINOUS DISTRIBUTION INTENSITY DATA

Test:U:23.784V I:0.2298A P:5.4656W PF:1.0000 Freq:0Hz		
UTHDi:0.00% ITHDi:0.00% KDisp:0 Lamp Flux:534.303x1 lm		
NAME: AGL-560-30X120	TYPE: MR16 GLOBE	WEIGHT: 100G
SPEC.: AGL-560-30X120	DIM.: 50MM	SERIAL No.:
MFR.: AQUALUX	SUR.:	Shielding Angle:

Table--2

UNIT: cd

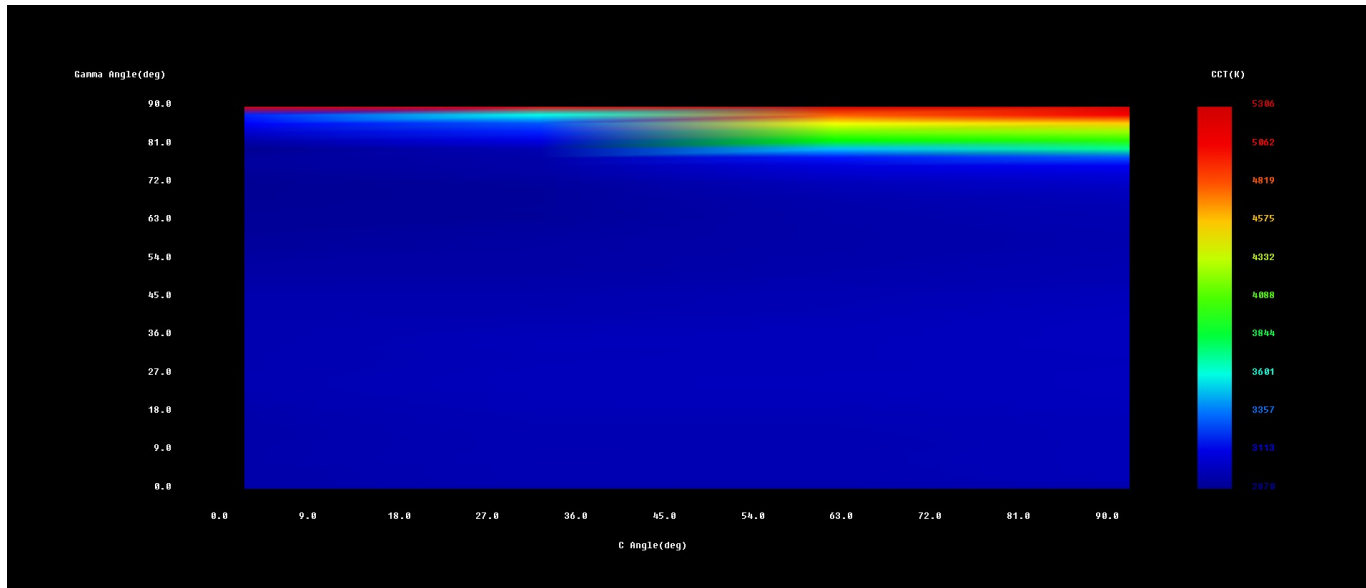
C (DEG) \ γ (DEG)	285	300	315	330	345														
0	182	182	182	182	182														
5	181	181	180	180	180														
10	182	182	182	183	184														
15	182	182	182	182	182														
20	173	174	174	174	174														
25	170	170	171	171	171														
30	167	167	167	168	167														
35	162	162	162	162	161														
40	154	153	152	151	151														
45	141	139	138	137	137														
50	123	122	120	119	118														
55	103	101	99.5	97.9	97.2														
60	80.9	79.2	77.9	76.3	75.6														
65	59.9	58.2	56.8	55.6	55.1														
70	41.4	39.8	38.7	37.8	37.4														
75	23.0	21.6	20.5	19.3	18.9														
80	5.12	4.46	3.97	3.57	3.37														
85	1.63	1.43	1.32	1.23	1.16														
90	0.06	0.06	0.06	0.07	0.07														

C Range: 0 - 180DEG
 C Interval: 15.0DEG
 Test Speed: HIGH
 Temperature: 20°C
 Operators: NICK
 Test Date: 16 October 2023

γ Range: 0 - 90DEG
 γ Interval: 1.0DEG
 Test System: EVERFINE GO-SPEX500_V1 SYSTEM V2.00.473
 Humidity: 65.0%
 Test Distance: 3.100m [K=1.0000]
 Remarks: AGL-560-30X120

Spatial Color Distribution Report

NAME: AGL-560-30X120	TYPE: MR16 GLOBE	WEIGHT: 100G
DIM.: 50MM	SPEC.: AGL-560-30X120	SERIAL No.:
MFR.: AQUALUX		



Color Parameters:

Average: $x=0.4374, y=0.4001, u'=0.2526, v'=0.5199$ CCT=2959K Ra=81.4 Rf=83 Rg=96
Center : $x=0.4386, y=0.4000, u'=0.2534, v'=0.5200$ CCT=2940K Ra=80.7 Rf=82 Rg=96
IESNA LM-79-2019 Max. $du'v'$: 0.0100 / max. $du'v'$: 0.0000[Set Range]
GB/T 24824(LB/T 001-2009):: avg. color nonuniformity $du'v'$:0.0008
GB/T 24824(LB/T 001-2009):: max. color nonuniformity $du'v'$:0.0036
Average: R1=80 R2=91 R3=95 R4=79 R5=80 R6=89 R7=81 R8=56 R9=1 R10=80
R11=77 R12=73 R13=83 R14=98 R15=72

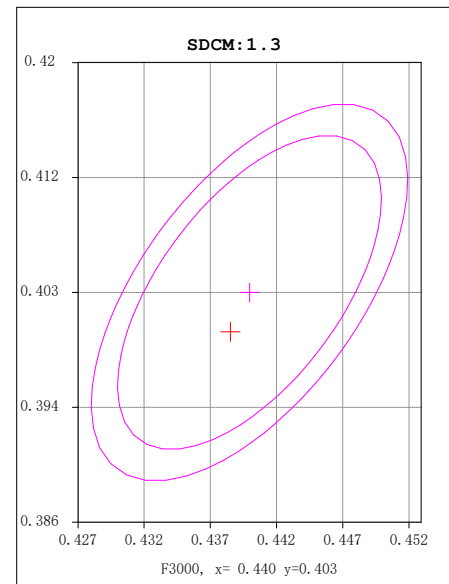
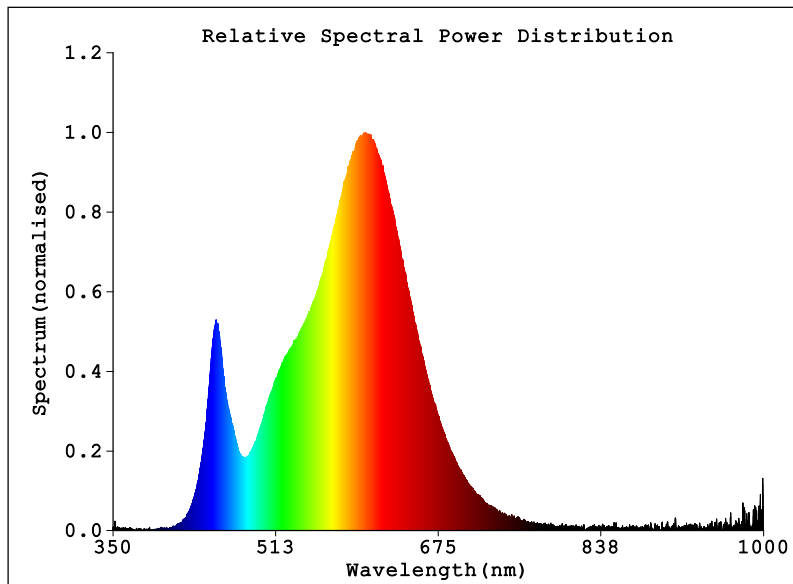
Tester: NICK
Temperature: 20°C
Manufacturer: AQUALUX

Date: 16 October 2023
Humidity: 65.0%
Remarks: AGL-560-30X120

System: GO-SPEX500_V1

Spectral Radiant Test Report

NAME: AGL-560-30X120	TYPE: MR16 GLOBE	WEIGHT: 100G
DIM.: 50MM	SPEC.: AGL-560-30X120	SERIAL No.:
MFR.: AQUALUX		



Photon & Colormetric & Photometric Quantities:

PPFD=0.26317 μ mol/m²/s E_e, PAR=0.054615W/m² K_PPFD, E=0.014132 K_PAR, E=0.0029328
 Chromaticity Coordinates: x=0.4386 y=0.4000/u'=0.2534 v'=0.5200 duv=-0.00183
 Tc=2940K Dominant WL: Ld=583.8nm Purity=51.7%
 Ratio: R=23.2% G=74.3% B=2.5% Peak WL: Lp=602.2nm HWL: 116.5nm
 Rendering Index: Ra=80.7 TM-30: Rf=82 Rg=96 CQS: Qa=81.42 TLCI = 63
 R1 =79 R2 =91 R3 =95 R4 =78 R5 =80 R6 =89 R7 =80
 R8 =54 R9 =-1 R10=79 R11=77 R12=71 R13=82 R14=98 R15=71
 E = 18.62 lx E_e = 0.0569 W/m²

Status: T=2880.00ms Ip=55892 (85%) [HAAS-1200 (CAN)]

Electrical: U=23.784V I=0.22975A P=5.4645W PF=1.0000

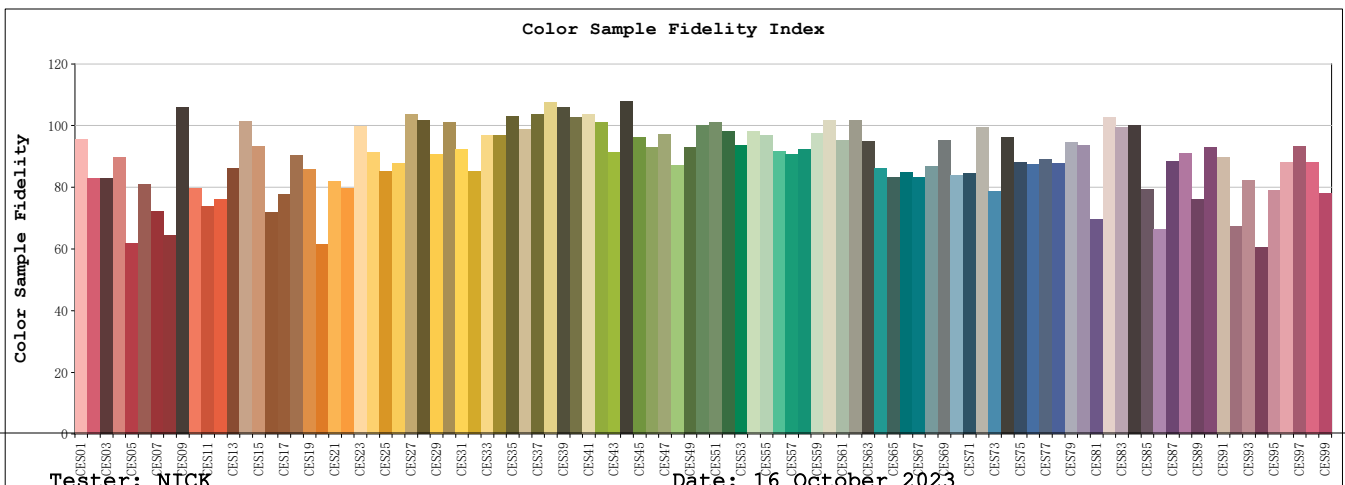
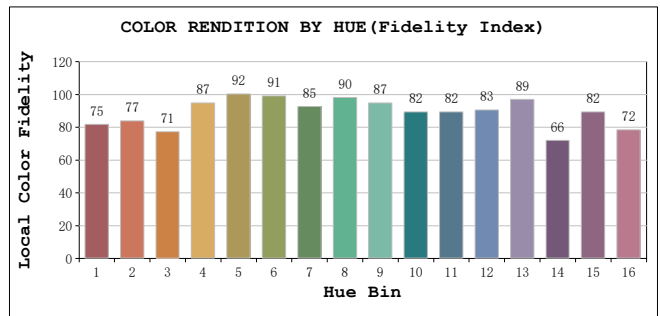
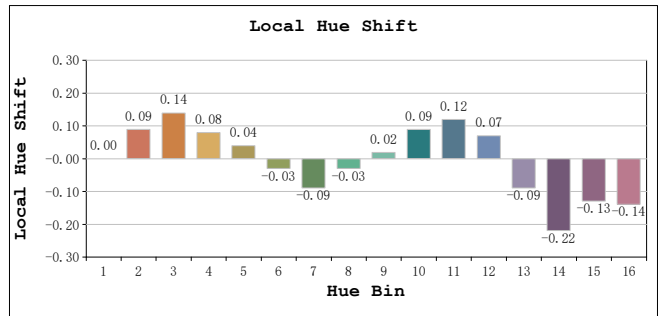
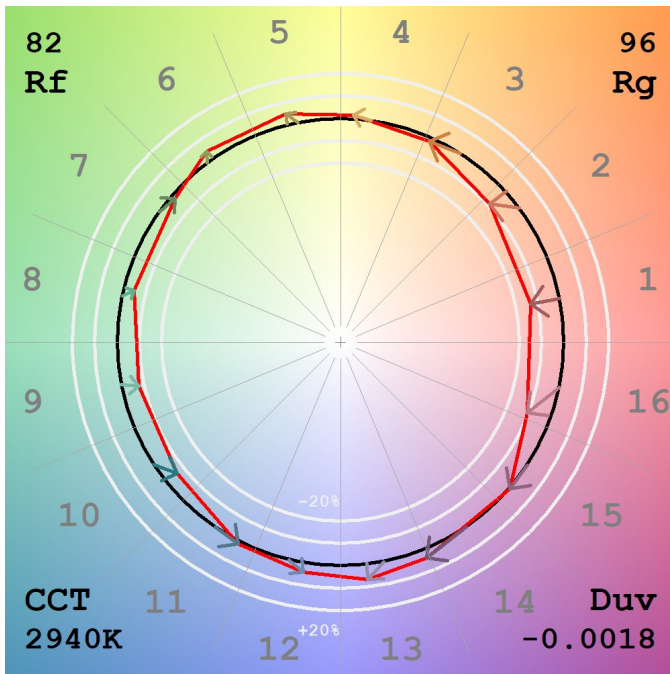
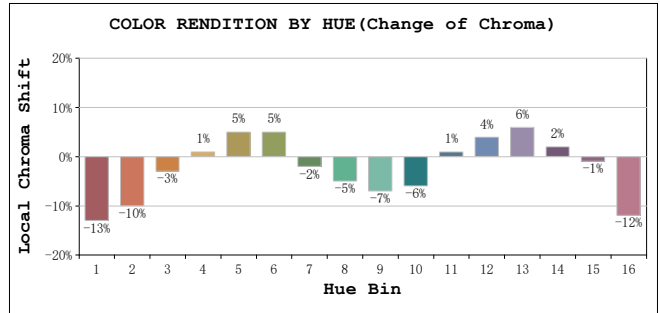
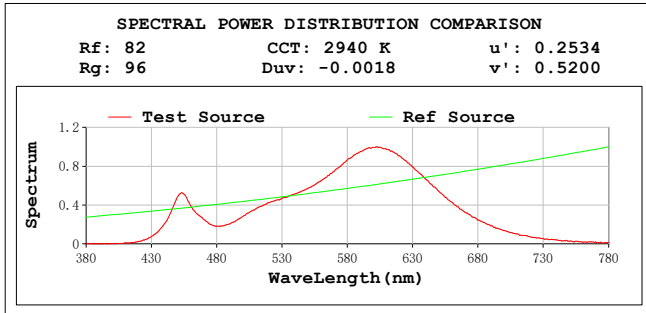
Test position: Center

Tester: NICK
 Temperature: 20°C
 Manufacturer: AQUALUX

Date: 16 October 2023
 Humidity: 65.0%
 Remarks: AGL-560-30X120

System: GO-SPEX500_V1

TM30



Tester: NICK
 Temperature: 20°C
 Manufacturer: AQUALUX
 System: GO-SPEX500_V1

Date: 16 October 2023
 Humidity: 65.0%
 Remarks: AGL-560-30X120

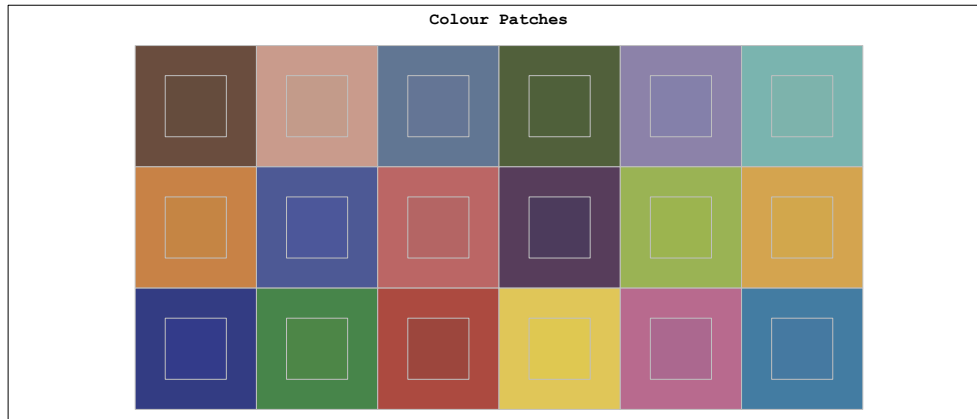
All Rf:

Rf1 = 87.5	Rf2 = 75.9	Rf3 = 76.1
Rf4 = 82.4	Rf5 = 56.8	Rf6 = 74.4
Rf7 = 66.4	Rf8 = 59.0	Rf9 = 97.1
Rf10 = 72.9	Rf11 = 67.7	Rf12 = 69.8
Rf13 = 79.1	Rf14 = 93.0	Rf15 = 85.4
Rf16 = 66.0	Rf17 = 71.1	Rf18 = 82.8
Rf19 = 78.7	Rf20 = 56.3	Rf21 = 75.3
Rf22 = 73.1	Rf23 = 91.5	Rf24 = 83.7
Rf25 = 78.0	Rf26 = 80.4	Rf27 = 95.1
Rf28 = 93.2	Rf29 = 83.1	Rf30 = 92.7
Rf31 = 84.6	Rf32 = 78.0	Rf33 = 88.9
Rf34 = 88.9	Rf35 = 94.4	Rf36 = 90.8
Rf37 = 95.2	Rf38 = 98.8	Rf39 = 97.2
Rf40 = 94.3	Rf41 = 94.9	Rf42 = 92.6
Rf43 = 83.9	Rf44 = 99.0	Rf45 = 88.1
Rf46 = 85.3	Rf47 = 89.2	Rf48 = 80.0
Rf49 = 85.4	Rf50 = 91.7	Rf51 = 92.7
Rf52 = 90.1	Rf53 = 85.9	Rf54 = 90.1
Rf55 = 88.9	Rf56 = 84.0	Rf57 = 83.3
Rf58 = 84.6	Rf59 = 89.4	Rf60 = 93.2
Rf61 = 87.3	Rf62 = 93.5	Rf63 = 87.1
Rf64 = 79.0	Rf65 = 76.3	Rf66 = 77.7
Rf67 = 76.4	Rf68 = 79.7	Rf69 = 87.3
Rf70 = 76.9	Rf71 = 77.5	Rf72 = 91.4
Rf73 = 72.3	Rf74 = 88.3	Rf75 = 80.7
Rf76 = 80.2	Rf77 = 81.8	Rf78 = 80.4
Rf79 = 86.8	Rf80 = 86.0	Rf81 = 63.8
Rf82 = 94.1	Rf83 = 91.2	Rf84 = 91.7
Rf85 = 72.8	Rf86 = 60.8	Rf87 = 81.2
Rf88 = 83.4	Rf89 = 69.8	Rf90 = 85.2
Rf91 = 82.4	Rf92 = 61.8	Rf93 = 75.4
Rf94 = 55.5	Rf95 = 72.5	Rf96 = 80.7
Rf97 = 85.7	Rf98 = 80.9	Rf99 = 71.7

Tester: NICK
Temperature: 20°C
Manufacturer: AQUALUX

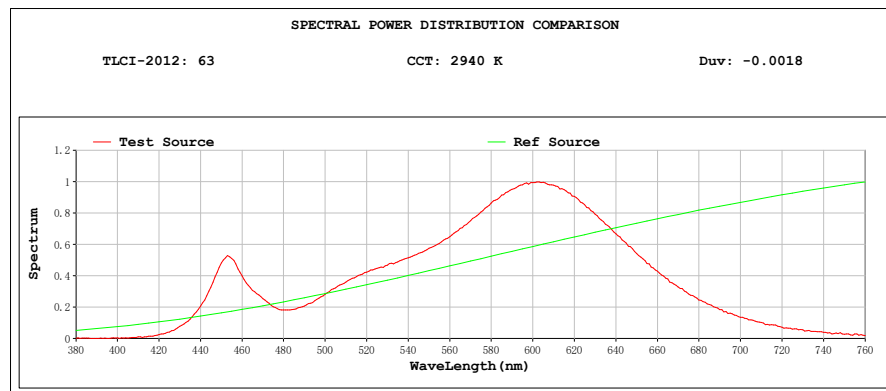
Date: 16 October 2023
Humidity: 65.0%
Remarks: AGL-560-30X120

System: GO-SPEX500_V1



Colourist's Advice Report

Sector	Lightness	Chroma	Hue
R	-4	-3	-1
R/Y	-1	-1	3
Y	1	1	3
Y/G	0	1	0
G	1	0	-2
G/C	0	0	-2
C	-1	-1	-2
C/B	-2	0	3
B	0	2	2
B/M	-2	1	-5
M	-4	0	-5
M/R	-5	-1	-5

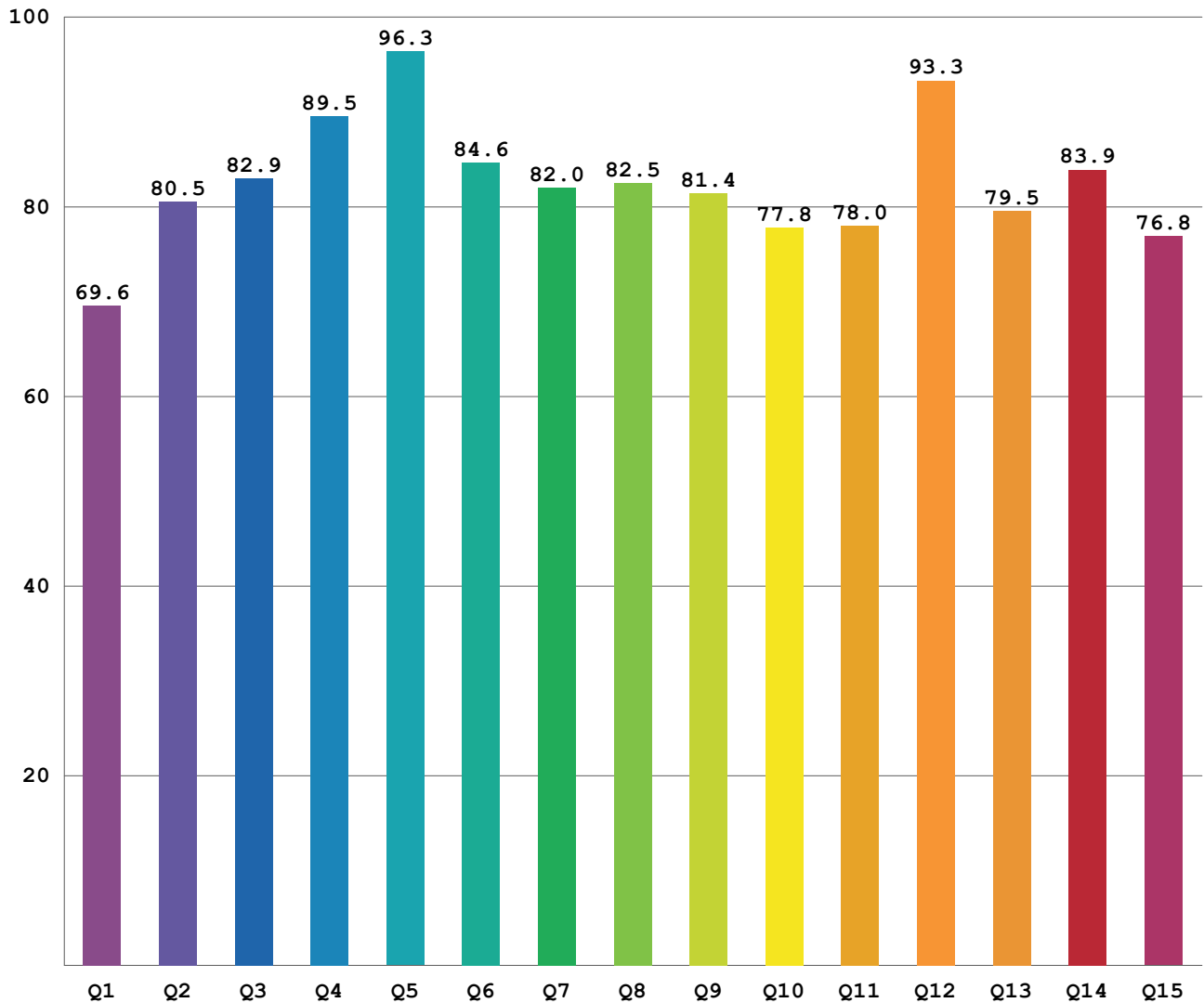


Tester: NICK
 Temperature: 20°C
 Manufacturer: AQUALUX

Date: 16 October 2023
 Humidity: 65.0%
 Remarks: AGL-560-30X120

System: GO-SPEX500_V1

CQS: 80.4



Q1	Q2	Q3	Q4	Q5	Q6	Q7	Q8	Q9	Q10	Q11	Q12	Q13	Q14	Q15
69.6	80.5	82.9	89.5	96.3	84.6	82.0	82.5	81.4	77.8	78.0	93.3	79.5	83.9	76.8

Tester: NICK
 Temperature: 20°C
 Manufacturer: AQUALUX

Date: 16 October 2023
 Humidity: 65.0%
 Remarks: AGL-560-30X120

System: GO-SPEX500_V1

