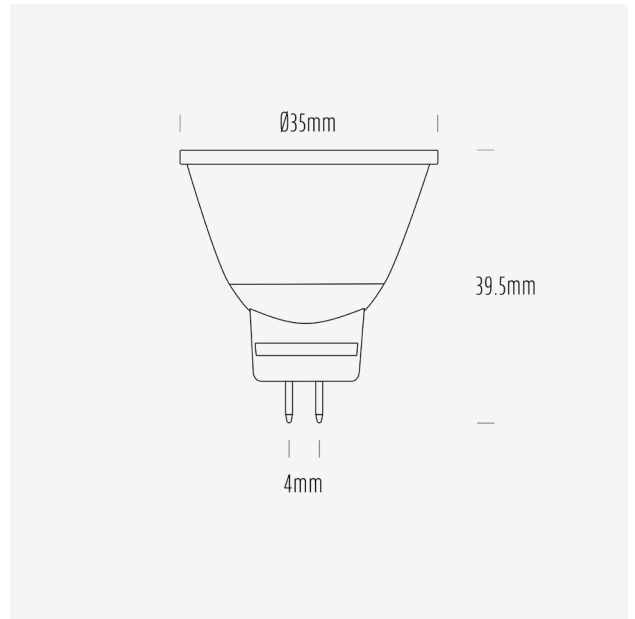


AGL 180 Series

MR11 LED Globes



AGL-180-30N40 / 3000K / MR11 / 40°



Product Data

Product Code	AGL-180-30N40		
Description	Aqualux 180 Series LED Lamp		
Type	MR11 GU4		
Construction	Aluminium Heatsink + PMMA Optic		
Warranty	3 Years		

Electrical Data

Input Voltage Range	24V AC/DC		
Nominal Voltage	24VDC		
Nominal Power	3W		
Nominal Current	125mA		
Input Voltage	-	-	24VDC 24VAC
Rated Power	-	-	2.6 3.0
Operating Frequency	-	-	- 50Hz
Max. no. of lamps on AQD24-040	-	-	- -
Max. no. of lamps on AQD24-100	-	-	- -
Max. no. of lamps on AQD24-240	-	-	- -

Dimming Compatibility	Non dimming		
Wiring Scheme	Parallel		
Startup Time	< 0.5s		

Mechanical & Thermal Data

Overall Length	39.5mm		
Max Diameter	35mm		
Lamp Base	GU4		
Weight	21g		
Operating Temp Range	-20° - 45°		
IP Rating	IP20		

Photometric Data

Nominal Flux (lm)	180		
Input Voltage	-	-	24VDC 24VAC
Input Power (W)	-	-	2.6 3.0
Rated Flux (lm)	-	-	257 267
Efficacy (lm/W)	-	-	97 90
CCT	3000K		
CCT Description	Warm White		
CRI (Ra)	82		
CRI (R9)	5		
TM-30 (Rf)	84		
TM-30 (Rg)	96		
SDCM	-		
Peak Intensity (cd)	443		
Nominal Beam Angle	40°		
Measured Beam Angle (FWHM)	36°		

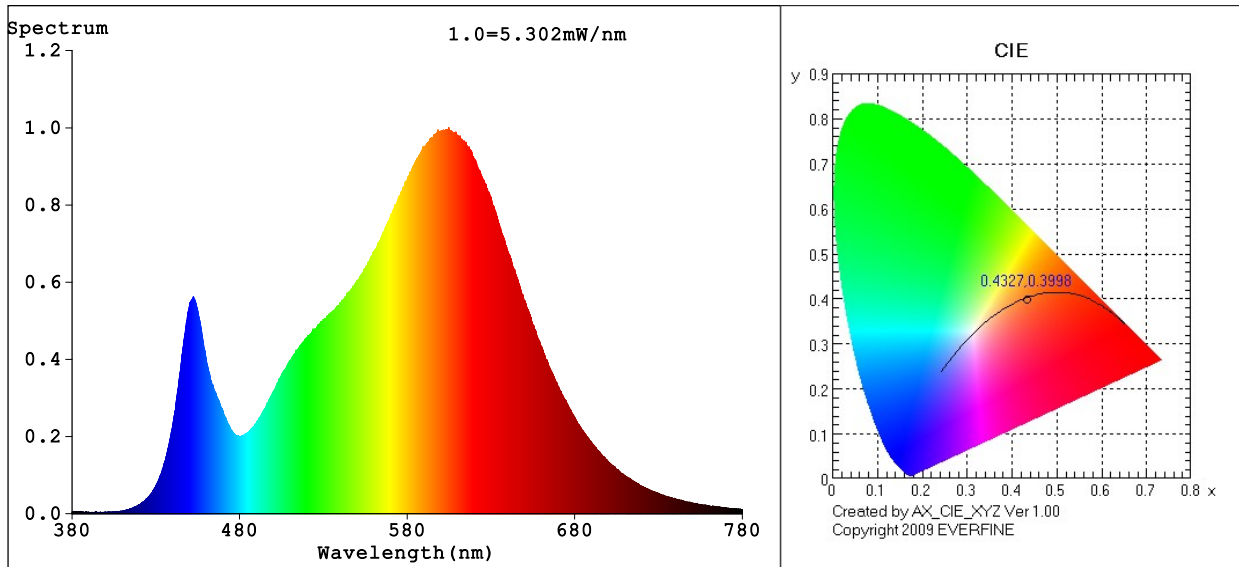
Lifespan Data

L70	15,000h		
Switching Cycles	15,000		

Compliance Data

EMI	Yes		
RCM	N/A		
Mercury Content	0mg		

Spectrum Test Report



Color Parameters:

Chromaticity Coordinate: $x=0.4327$ $y=0.3998$ / $u'=0.2497$ $v'=0.5191$
 CCT=3037K (Duv=-0.0011) Dominant WL:Ld =583.1nm WL:Lc = --nm Purity=49.9%
 Ratio:R=22.7% G=74.6% B=2.7%; Peak WL:Lp=604.8nm FWHM=125.0nm
 Render Index:Ra=82.3 AvgR=76.6 TM30:Rf=84 Rg=96

R1 =81 R2 =91 R3 =96 R4 =80 R5 =81 R6 =90 R7 =82
 R8 =58 R9 =5 R10=80 R11=79 R12=72 R13=84 R14=98 R15=73

Photo Parameters:

Flux = 257.4 lm Eff. : 97.23 lm/W Fe = 776.3 mW

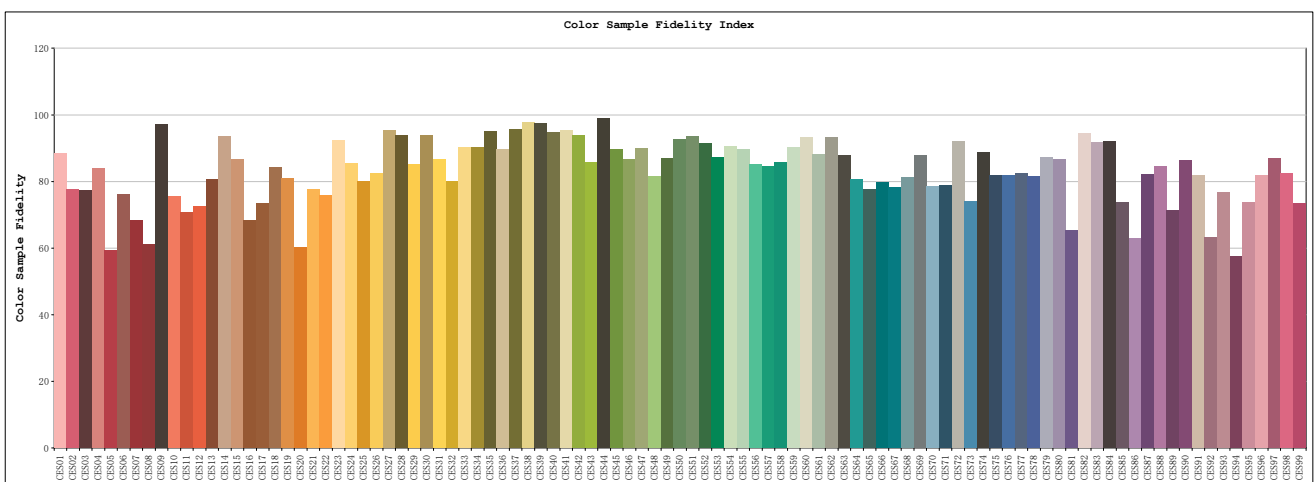
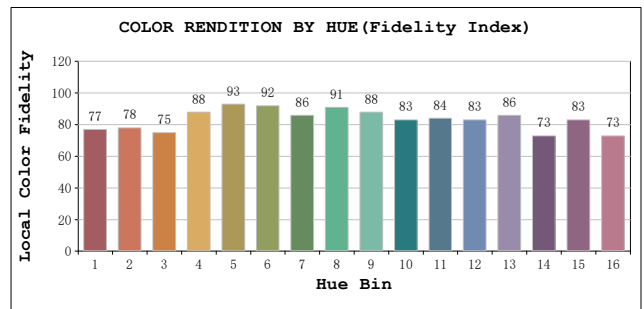
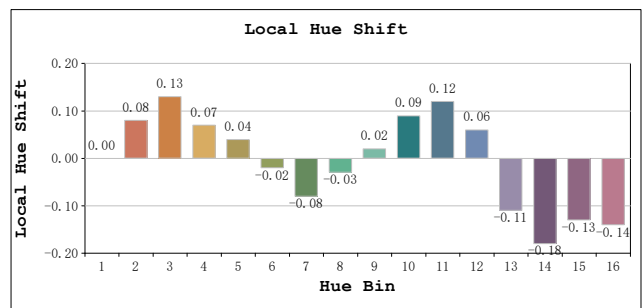
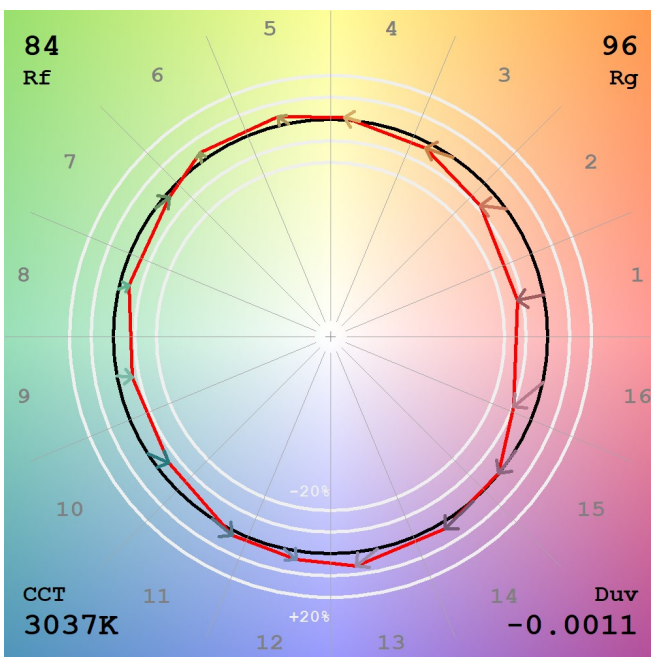
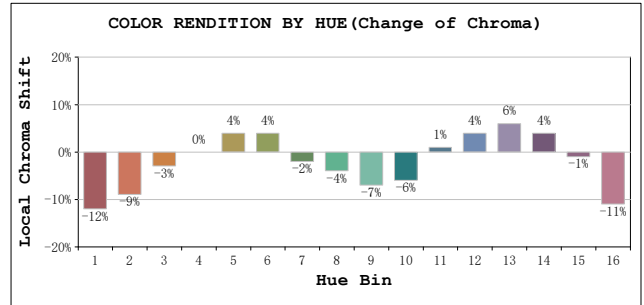
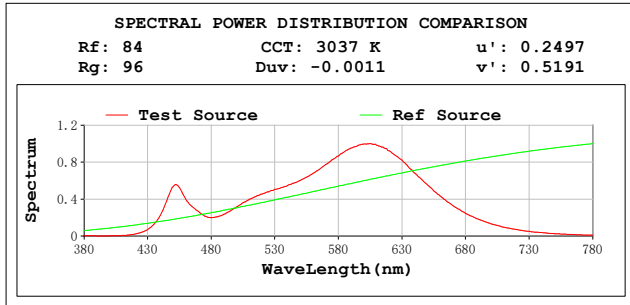
Electrical parameters:

V = 23.978 V I = 0.1104 A P = 2.647 W PF = 1.0000
 LEVEL:OUT WHITE:ANSI_3000K
 Status: Integral T = 466 ms Ip = 51767 (79%)

GBT5702

TM30

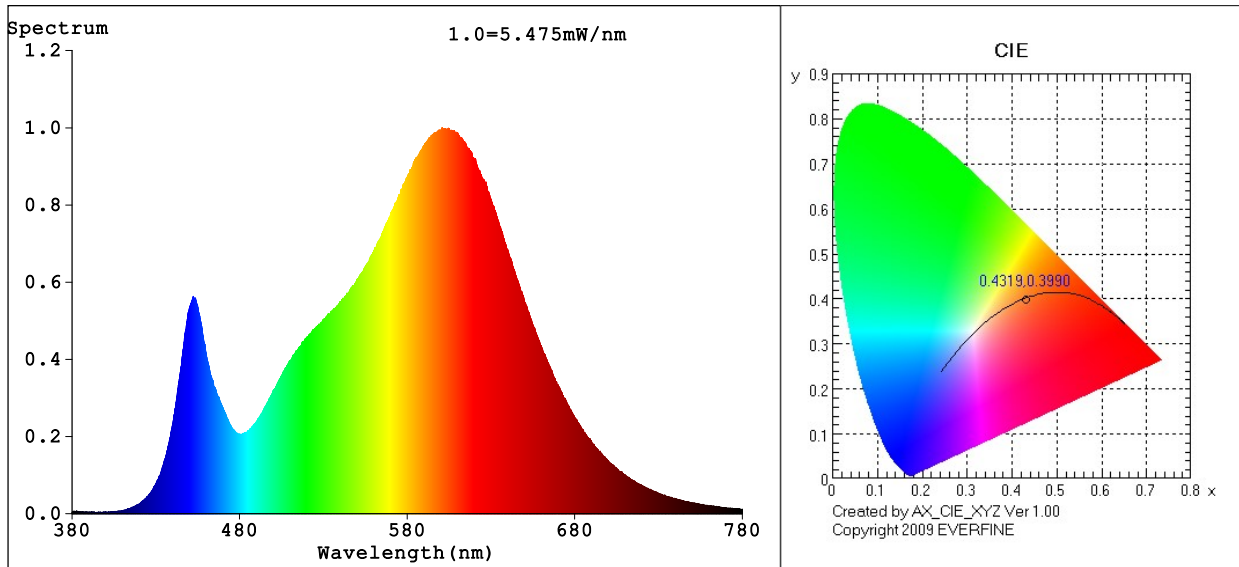
View Angle:2 Deg



Model:AGL-180-30N40 / 3000K
 Tester:EC
 Temperature:25.3Deg
 Manufacturer:AQUALUX

Number:AGL-180-30N40 / 24V DC
 Date:2023-10-24 14:27:07
 Humidity:65.0%
 Remarks:24VDC

Spectrum Test Report



Color Parameters:

Chromaticity Coordinate: $x=0.4319$ $y=0.3990$ / $u'=0.2495$ $v'=0.5186$
 CCT=3046K (Duv=-0.0013) Dominant WL:Ld =583.1nm WL:Lc = --nm Purity=49.4%
 Ratio:R=22.7% G=74.6% B=2.7%; Peak WL:Lp=600.9nm FWHM=124.7nm
 Render Index:Ra=82.2 AvgR=76.5 TM30:Rf=83 Rg=96

R1 =81 R2 =91 R3 =96 R4 =80 R5 =81 R6 =90 R7 =82
 R8 =58 R9 =4 R10=80 R11=79 R12=72 R13=83 R14=98 R15=73

Photo Parameters:

Flux = 266.8 lm Eff. : 90.24 lm/W Fe = 806.1 mW

Electrical parameters:

V = 23.972 V I = 0.1817 A P = 2.957 W PF = 0.6788

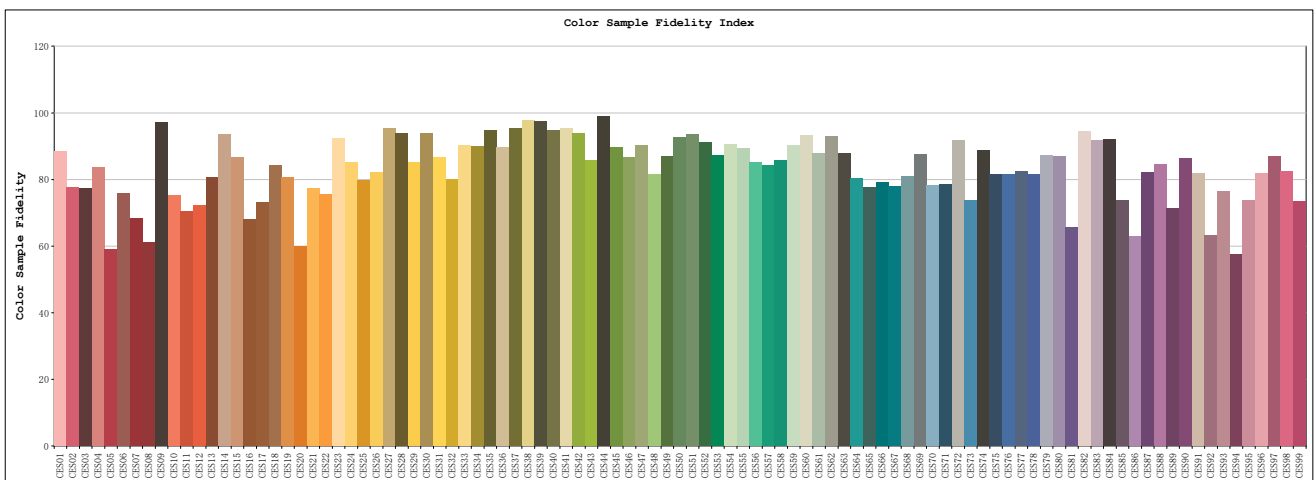
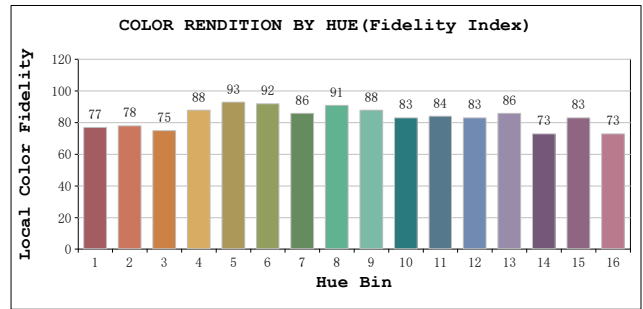
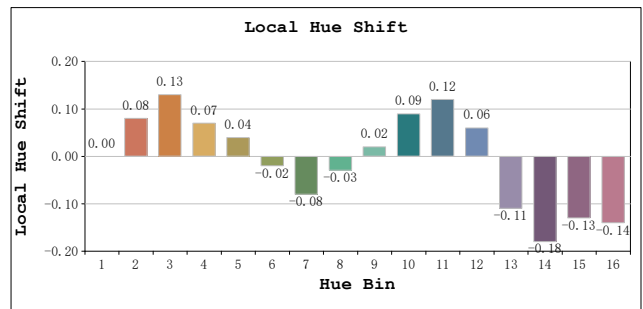
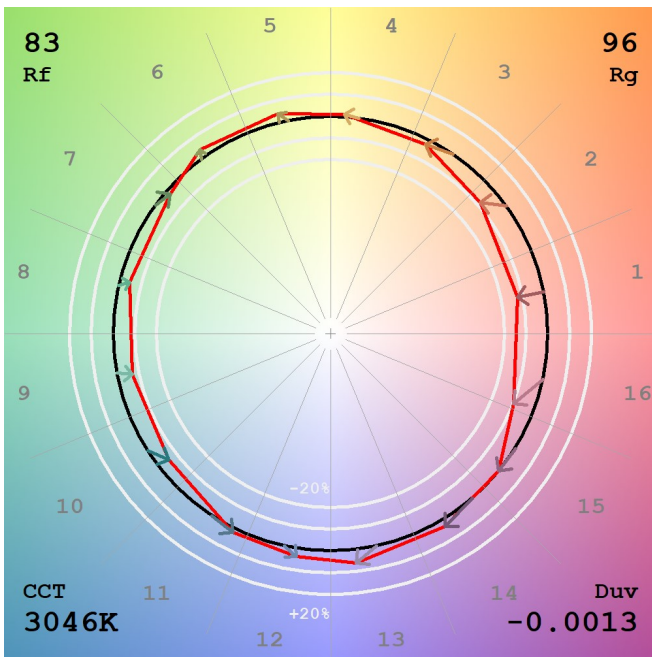
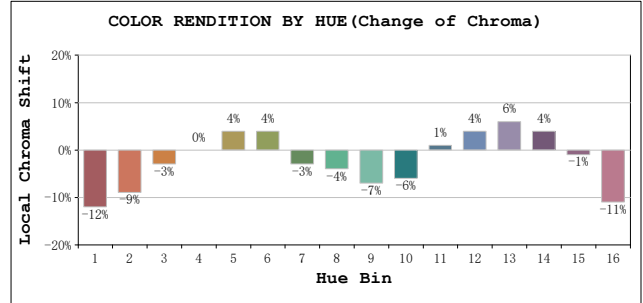
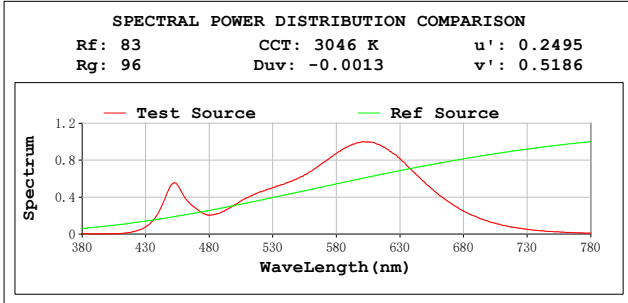
LEVEL:OUT WHITE:ANSI_3000K

Status: Integral T = 466 ms Ip = 53763 (82%)

GBT5702

TM30

View Angle:2 Deg



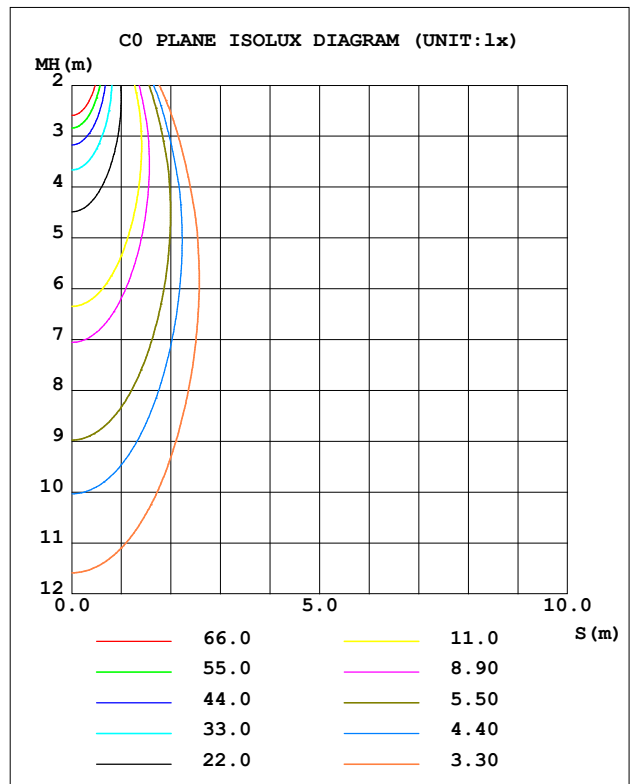
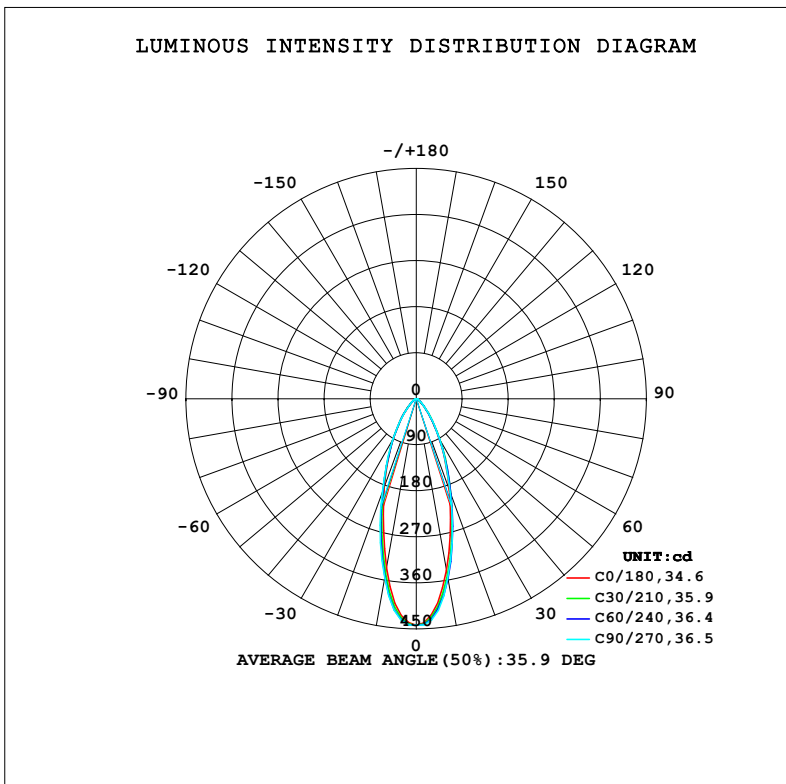
Model:AGL-180-30N40 / 3000K
 Tester:EC
 Temperature:25.3Deg
 Manufacturer:AQUALUX

Number:AGL-180-30N40 / 24V AC
 Date:2023-10-24 14:31:17
 Humidity:65.0%
 Remarks:24VAC

LUMINAIRE PHOTOMETRIC TEST REPORT

Test:U:23.912V I:0.0897A P:2.1444W PF:1.0000 Freq:0Hz		
UTHDi:0.00% ITHDi:0.00% KDisp:0 Lamp Flux:244.174x1 lm		
NAME: AGL-180-30N40	TYPE: MR11 LAMP	WEIGHT:
SPEC.: AGL-180-30N40	DIM.:	SERIAL No.: -
MFR.: AQUALUX	SUR.:	Shielding Angle:

DATA OF LAMP		PHOTOMETRIC DATA			
MODEL	LED	I _{max} (cd)	443.1	S/MH (C0/180)	0.55
NOMINAL POWER (W)	3	LOR (%)	100.0	S/MH (C90/270)	0.59
RATED VOLTAGE (V)	24	TOTAL FLUX (lm)	244.17	η UP, DN (C0-180)	0.0, 50.0
NOMINAL FLUX (lm)	244.174	CIE CLASS	DIRECT	η UP, DN (C180-360)	0.0, 50.0
LAMPS INSIDE	1	η up (%)	0.0	CIBSE SHR NOM	0.50
TEST VOLTAGE (V)	24	η down (%)	100.0	CIBSE SHR MAX	0.65



C Range: 0 - 180DEG
 C Interval: 15.0DEG
 Test Speed: HIGH
 Temperature: 20°C
 Operators: Elaine
 Test Date: 10 November 2023

γ Range: 0 - 90DEG
 γ Interval: 2.0DEG
 Test System: EVERFINE GO-SPEX500_V1 SYSTEM V2.00.473
 Humidity: 65.0%
 Test Distance: 3.100m [K=1.0000]
 Remarks: AGL-180-30N40
 3W / 3000K
 24V DC

ZONAL FLUX DIAGRAM

ZONAL FLUX DIAGRAM:

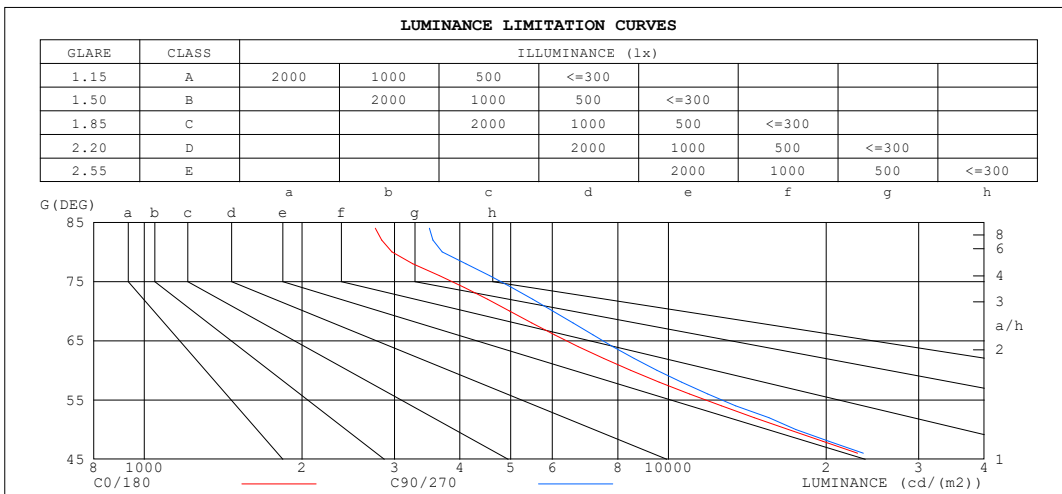
γ	C0	C45	C90	C135	C180	C225	C270	C315	γ	∅ zone	∅ total	%lum, lamp
10	341.0	356.0	356.2	351.6	335.7	351.6	356.2	356.0	0- 10	37.93	37.93	15.5,15.5
20	189.9	200.5	195.3	191.2	183.0	191.2	195.3	200.5	10- 20	74.15	112.1	45.9,45.9
30	89.87	93.89	91.56	90.42	90.14	90.42	91.56	93.89	20- 30	62.68	174.8	71.6,71.6
40	36.44	37.33	37.53	37.47	38.31	37.47	37.53	37.33	30- 40	37.82	212.6	87.1,87.1
50	13.66	13.32	14.13	13.65	14.62	13.65	14.13	13.32	40- 50	18.11	230.7	94.5,94.5
60	5.319	4.964	5.964	5.366	5.963	5.366	5.964	4.964	50- 60	7.991	238.7	97.7,97.7
70	2.137	1.977	2.584	2.283	2.505	2.283	2.584	1.977	60- 70	3.609	242.3	99.2,99.2
80	0.6471	0.6350	0.8071	0.7859	0.7382	0.7859	0.8071	0.6350	70- 80	1.494	243.8	99.8,99.8
90	0.0658	0.0615	0.0805	0.0765	0.0349	0.0765	0.0805	0.0615	80- 90	0.3934	244.2	100,100
100									90-100			
110									100-110			
120									110-120			
130									120-130			
140									130-140			
150									140-150			
160									150-160			
170									160-170			
180									170-180			
DEG	LUMINOUS INTENSITY:cd									UNIT:lm		

C Range: 0 - 180DEG
 C Interval: 15.0DEG
 Test Speed: HIGH
 Temperature:20°C
 Operators:Elaine
 Test Date:10 November 2023

γ Range: 0 - 90DEG
 γ Interval: 2.0DEG
 Test System:EVERFINE GO-SPEX500_V1 SYSTEM V2.00.473
 Humidity:65.0%
 Test Distance:3.100m [K=1.0000]
 Remarks: AGL-180-30N40
 3W / 3000K
 24V DC

LUMINANCE LIMITATION CURVES

Test:U:23.912V I:0.0897A P:2.1444W PF:1.0000 Freq:0Hz UTHDi:0.00% ITHDi:0.00% KDisp:0 Lamp Flux:244.174x1 lm		
NAME: AGL-180-30N40	TYPE: MR11 LAMP	WEIGHT:
SPEC.: AGL-180-30N40	DIM.:	SERIAL No.: -
MFR.: AQUALUX	SUR.:	Shielding Angle:



LUMINANCE cd/(m2)		
G (DEG)	C0/180	C90/270
85	3308	4193
80	2967	3700
75	4343	5346
70	4975	6016
65	6975	8118
60	8470	9496
55	12934	13757
50	16926	17499
45	27476	28007

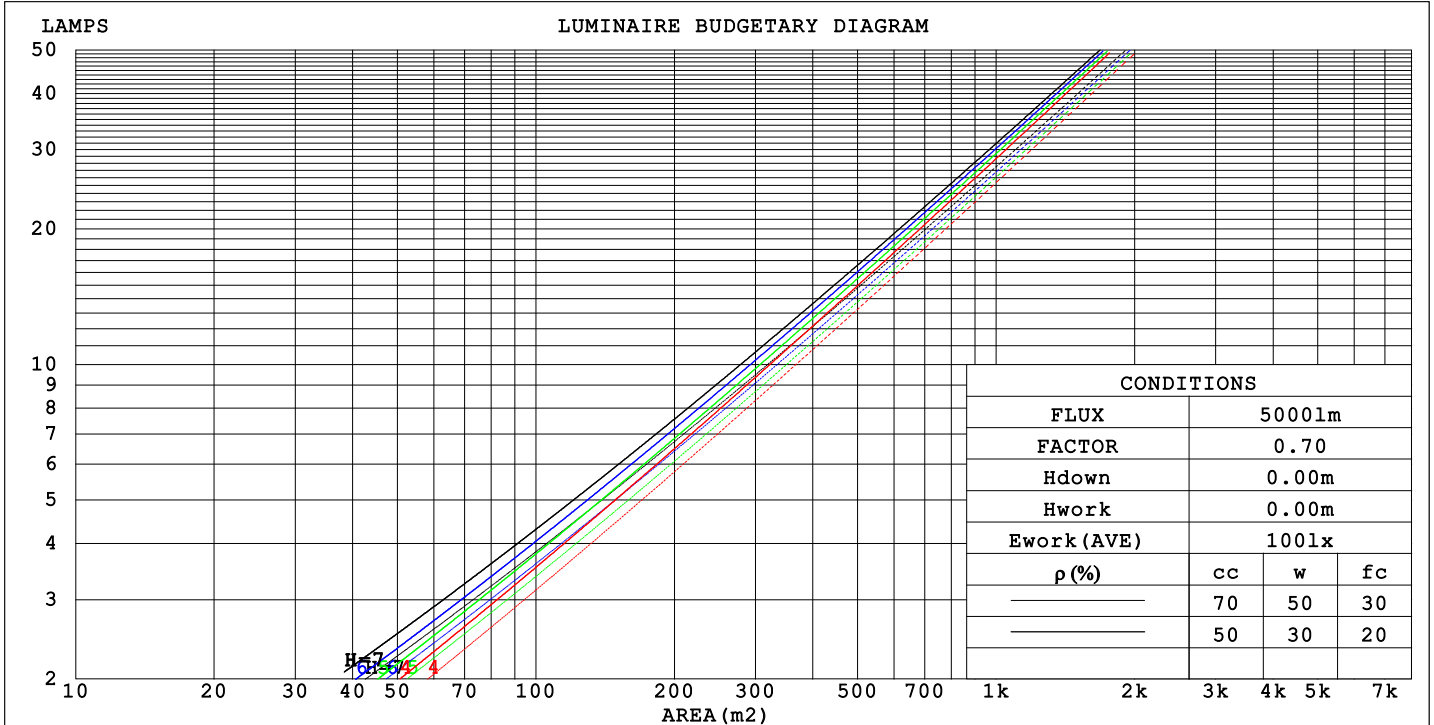
C Range: 0 - 180DEG
 C Interval: 15.0DEG
 Test Speed: HIGH
 Temperature: 20°C
 Operator: Elaine
 Test Date: 10 November 2023

γ Range: 0 - 90DEG
 γ Interval: 2.0DEG
 Test System: EVERFINE GO-SPEX500_V1 SYSTEM V2.00.473
 Humidity: 65.0%
 Test Distance: 3.100m [K=1.0000]
 Remarks: AGL-180-30N40
 3W / 3000K
 24V DC

CU AND LUMINAIRE BUDGETARY ESTIMATE DIAGRAM

Test:U:23.912V I:0.0897A P:2.1444W PF:1.0000 Freq:0Hz		
UTHDi:0.00% ITHDi:0.00% KDisp:0 Lamp Flux:244.174x1 lm		
NAME: AGL-180-30N40	TYPE: MR11 LAMP	WEIGHT:
SPEC.: AGL-180-30N40	DIM.:	SERIAL No.: -
MFR.: AQUALUX	SUR.:	Shielding Angle:

pcc	80%			70%			50%			30%			10%			0
	50%	30%	10%	50%	30%	10%	50%	30%	10%	50%	30%	10%	50%	30%	10%	
pw																
pfc	20%			20%			20%			20%			20%			0
RCR	RCR:Room Cavity Ratio Coefficients of Utilization (CU)															
0.0	1.19	1.19	1.19	1.16	1.16	1.16	1.11	1.11	1.11	1.06	1.06	1.06	1.02	1.02	1.02	1.00
1.0	1.11	1.08	1.06	1.08	1.06	1.04	1.04	1.03	1.01	1.01	.99	.98	.97	.96	.95	.93
2.0	1.03	.99	.95	1.01	.97	.94	.98	.95	.92	.95	.92	.90	.92	.90	.88	.87
3.0	.96	.91	.87	.94	.90	.86	.92	.88	.85	.89	.86	.83	.87	.84	.82	.81
4.0	.90	.84	.80	.89	.83	.80	.86	.82	.79	.84	.81	.78	.83	.79	.77	.75
5.0	.84	.78	.74	.83	.78	.74	.82	.77	.73	.80	.76	.73	.78	.75	.72	.70
6.0	.79	.73	.69	.79	.73	.69	.77	.72	.69	.76	.71	.68	.74	.71	.68	.66
7.0	.75	.69	.65	.74	.69	.65	.73	.68	.64	.72	.67	.64	.71	.67	.64	.62
8.0	.71	.65	.61	.70	.65	.61	.69	.64	.61	.68	.64	.61	.67	.63	.60	.59
9.0	.67	.62	.58	.67	.61	.58	.66	.61	.58	.65	.61	.57	.64	.60	.57	.56
10.0	.64	.59	.55	.64	.58	.55	.63	.58	.55	.62	.58	.54	.61	.57	.54	.53



C Range: 0 - 180DEG
 C Interval: 15.0DEG
 Test Speed: HIGH
 Temperature: 20°C
 Operator: Elaine
 Test Date: 10 November 2023

γ Range: 0 - 90DEG
 γ Interval: 2.0DEG
 Test System: EVERFINE GO-SPEX500_V1 SYSTEM V2.00.473
 Humidity: 65.0%
 Test Distance: 3.100m [K=1.0000]
 Remarks: AGL-180-30N40
 3W / 3000K
 24V DC

WEC AND CCEC

Test:U:23.912V I:0.0897A P:2.1444W PF:1.0000 Freq:0Hz		
UTHDi:0.00% ITHDi:0.00% KDisp:0 Lamp Flux:244.174x1 lm		
NAME: AGL-180-30N40	TYPE: MR11 LAMP	WEIGHT:
SPEC.: AGL-180-30N40	DIM.:	SERIAL No.: -
MFR.: AQUALUX	SUR.:	Shielding Angle:

ρcc	80%			70%			50%			30%			10%			0
ρw	50%	30%	10%	50%	30%	10%	50%	30%	10%	50%	30%	10%	50%	30%	10%	0
ρfc	20%			20%			20%			20%			20%			0
RCR	RCR:Room Cavity Ratio						Wall Exitance Coefficients (WEC)									
0.0																
1.0	.182	.103	.033	.175	.100	.032	.162	.093	.030	.151	.087	.028	.140	.081	.026	
2.0	.173	.095	.029	.168	.092	.028	.157	.087	.027	.147	.083	.026	.138	.078	.025	
3.0	.164	.087	.026	.159	.085	.026	.150	.081	.025	.142	.078	.024	.134	.074	.023	
4.0	.155	.081	.024	.151	.079	.023	.144	.076	.023	.136	.073	.022	.129	.070	.021	
5.0	.147	.075	.022	.144	.074	.021	.137	.071	.021	.131	.069	.020	.125	.067	.020	
6.0	.140	.070	.020	.137	.069	.020	.131	.067	.019	.125	.065	.019	.120	.063	.019	
7.0	.133	.066	.019	.130	.065	.018	.125	.063	.018	.120	.062	.018	.115	.060	.018	
8.0	.127	.062	.017	.124	.061	.017	.120	.060	.017	.115	.058	.017	.111	.057	.017	
9.0	.121	.059	.016	.119	.058	.016	.115	.057	.016	.111	.055	.016	.107	.054	.016	
10.0	.116	.055	.015	.114	.055	.015	.110	.054	.015	.106	.053	.015	.103	.052	.015	

ρcc	80%			70%			50%			30%			10%			0
ρw	50%	30%	10%	50%	30%	10%	50%	30%	10%	50%	30%	10%	50%	30%	10%	0
ρfc	20%			20%			20%			20%			20%			0
RCR	RCR:Room Cavity Ratio						Ceiling Cavity Exitance Coefficients (CCEC)									
0.0	.190	.190	.190	.163	.163	.163	.111	.111	.111	.064	.064	.064	.020	.020	.020	
1.0	.171	.157	.144	.147	.135	.124	.100	.093	.086	.058	.054	.050	.018	.017	.016	
2.0	.156	.132	.112	.134	.114	.097	.092	.079	.068	.053	.046	.040	.017	.015	.013	
3.0	.144	.114	.089	.124	.098	.077	.085	.068	.054	.049	.040	.032	.016	.013	.010	
4.0	.134	.099	.072	.115	.085	.063	.079	.060	.044	.046	.035	.026	.015	.011	.009	
5.0	.125	.087	.060	.107	.076	.052	.074	.053	.037	.043	.031	.022	.014	.010	.007	
6.0	.117	.078	.050	.101	.068	.043	.070	.047	.031	.040	.028	.018	.013	.009	.006	
7.0	.111	.070	.042	.095	.061	.037	.066	.043	.026	.038	.025	.016	.012	.008	.005	
8.0	.105	.064	.036	.090	.056	.032	.062	.039	.022	.036	.023	.013	.012	.008	.004	
9.0	.099	.059	.031	.086	.051	.027	.059	.036	.019	.035	.021	.012	.011	.007	.004	
10.0	.095	.054	.028	.082	.047	.024	.057	.033	.017	.033	.020	.010	.011	.006	.003	

C Range: 0 - 180DEG
 C Interval: 15.0DEG
 Test Speed: HIGH
 Temperature:20°C
 Operators:Elaine
 Test Date:10 November 2023

γ Range: 0 - 90DEG
 γ Interval: 2.0DEG
 Test System:EVERFINE GO-SPEX500_V1 SYSTEM V2.00.473
 Humidity:65.0%
 Test Distance:3.100m [K=1.0000]
 Remarks: AGL-180-30N40
 3W / 3000K
 24V DC

UGR(Unified Glare Rating) Table

Test:U:23.912V I:0.0897A P:2.1444W PF:1.0000 Freq:0Hz		
UTHDi:0.00% ITHDi:0.00% KDisp:0 Lamp Flux:244.174x1 lm		
NAME: AGL-180-30N40	TYPE: MR11 LAMP	WEIGHT:
SPEC.: AGL-180-30N40	DIM.:	SERIAL No.: -
MFR.: AQUALUX	SUR.:	Shielding Angle:

ceiling/cavity	0.7	0.7	0.5	0.5	0.3	0.7	0.7	0.5	0.5	0.3
walls	0.5	0.3	0.5	0.3	0.3	0.5	0.3	0.5	0.3	0.3
working plane	0.2	0.2	0.2	0.2	0.2	0.2	0.2	0.2	0.2	0.2

Room dimensions		Viewed crosswise					Viewed endwise				
x = 2H	y = 2H	23.7	24.6	23.9	24.8	25.0	23.7	24.6	23.9	24.8	24.9
	3H	23.8	24.6	24.0	24.8	25.0	23.8	24.7	24.1	24.9	25.1
	4H	23.8	24.6	24.0	24.8	25.0	23.8	24.7	24.1	24.9	25.1
	6H	23.7	24.5	24.0	24.7	25.0	23.8	24.6	24.1	24.8	25.1
	8H	23.7	24.5	24.0	24.7	25.0	23.8	24.5	24.1	24.8	25.1
	12H	23.7	24.4	24.0	24.7	24.9	23.8	24.5	24.1	24.8	25.0
4H	2H	23.6	24.4	23.9	24.7	24.9	23.6	24.4	23.9	24.6	24.9
	3H	23.7	24.5	24.1	24.7	25.0	23.8	24.5	24.1	24.8	25.0
	4H	23.8	24.4	24.1	24.7	25.0	23.8	24.5	24.2	24.8	25.1
	6H	23.8	24.3	24.1	24.7	25.0	23.9	24.4	24.2	24.8	25.1
	8H	23.7	24.3	24.1	24.6	25.0	23.9	24.4	24.3	24.7	25.1
	12H	23.7	24.2	24.1	24.6	25.0	23.9	24.3	24.3	24.7	25.1
8H	4H	23.7	24.2	24.1	24.6	24.9	23.8	24.3	24.2	24.6	25.0
	6H	23.7	24.1	24.1	24.5	24.9	23.8	24.2	24.2	24.6	25.1
	8H	23.7	24.1	24.1	24.5	24.9	23.8	24.2	24.3	24.6	25.1
	12H	23.7	24.0	24.1	24.5	24.9	23.8	24.2	24.3	24.6	25.1
12H	4H	23.6	24.1	24.0	24.5	24.9	23.7	24.2	24.1	24.6	25.0
	6H	23.7	24.0	24.1	24.5	24.9	23.8	24.2	24.2	24.6	25.0
	8H	23.7	24.0	24.1	24.4	24.9	23.8	24.1	24.3	24.6	25.0

Variations with the observer position at spacings(CIE Pub.117):		
S = 1.0H	+ 1.7 / - 3.2	+ 1.7 / - 2.6
1.5H	+ 2.6 / - 2.6	+ 2.7 / - 2.3
2.0H	+ 3.4 / - 2.9	+ 3.0 / - 2.4

CIE Pub.117, 244.2 lm Total Lamp Luminous Flux Correct (8log(F/F0) = -4.9)
 Area: 0.001256 m2

C Range: 0 - 180DEG
 C Interval: 15.0DEG
 Test Speed: HIGH
 Temperature:20°C
 Operators:Elaine
 Test Date:10 November 2023

γ Range: 0 - 90DEG
 γ Interval: 2.0DEG
 Test System:EVERFINE GO-SPEX500_V1 SYSTEM V2.00.473
 Humidity:65.0%
 Test Distance:3.100m [K=1.0000]
 Remarks: AGL-180-30N40
 3W / 3000K
 24V DC

UTILIZATION FACTORS TABLE

Test:U:23.912V I:0.0897A P:2.1444W PF:1.0000 Freq:0Hz		
UTHDi:0.00% ITHDi:0.00% KDisp:0 Lamp Flux:244.174x1 lm		
NAME: AGL-180-30N40	TYPE: MR11 LAMP	WEIGHT:
SPEC.: AGL-180-30N40	DIM.:	SERIAL No.: -
MFR.: AQUALUX	SUR.:	Shielding Angle:

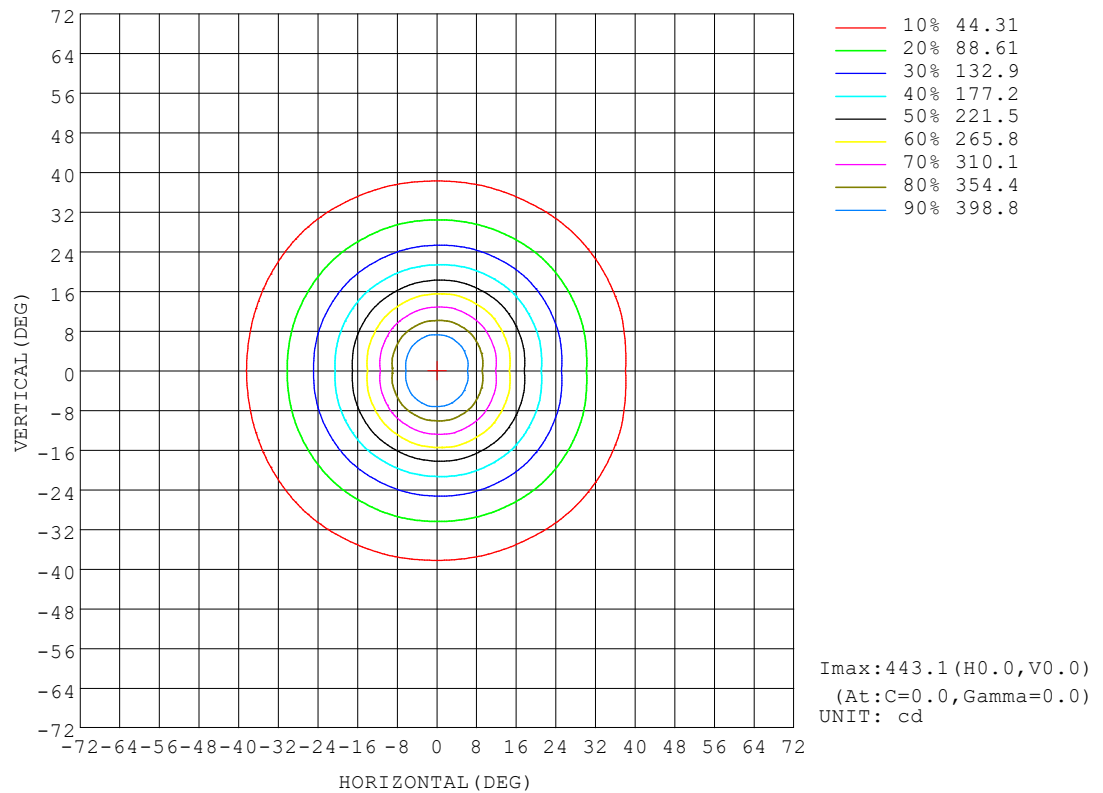
REFLECTANCE										
Ceiling	0.8	0.8	0.8	0.7	0.7	0.7	0.5	0.5	0.5	0
Walls	0.7	0.5	0.3	0.7	0.5	0.3	0.7	0.5	0.3	0
Working plane	0.2	0.2	0.2	0.2	0.2	0.2	0.2	0.2	0.2	0
ROOM INDEX	UTILIZATION FACTORS (PERCENT) $k(RI) \times RCR = 5$									
k = 0.60	83	76	72	83	76	72	82	76	72	68
0.80	91	85	81	91	84	80	89	84	80	76
1.00	96	90	86	96	90	86	94	90	85	81
1.25	101	95	91	100	95	91	98	93	90	86
1.50	104	99	95	103	98	94	100	96	93	89
2.00	107	103	99	106	101	98	103	99	97	91
2.50	109	105	102	107	104	101	104	101	99	93
3.00	111	107	104	109	106	103	106	103	101	94
4.00	113	110	107	111	108	106	107	105	103	96
5.00	114	112	110	112	110	108	108	107	105	97
ROOM INDEX	UF(total)									Direct
According to DIN EN 13032-2 2004			Suspended				SHRNOM = 1.25			

C Range: 0 - 180DEG
 C Interval: 15.0DEG
 Test Speed: HIGH
 Temperature:20°C
 Operators:Elaine
 Test Date:10 November 2023

γ Range: 0 - 90DEG
 γ Interval: 2.0DEG
 Test System:EVERFINE GO-SPEX500_V1 SYSTEM V2.00.473
 Humidity:65.0%
 Test Distance:3.100m [K=1.0000]
 Remarks: AGL-180-30N40
 3W / 3000K
 24V DC

ISOCANDELA DIAGRAM

Test:U:23.912V I:0.0897A P:2.1444W PF:1.0000 Freq:0Hz		
UTHDi:0.00% ITHDi:0.00% KDisp:0 Lamp Flux:244.174x1 lm		
NAME: AGL-180-30N40	TYPE: MR11 LAMP	WEIGHT:
SPEC.: AGL-180-30N40	DIM.:	SERIAL No.: -
MFR.: AQUALUX	SUR.:	Shielding Angle:

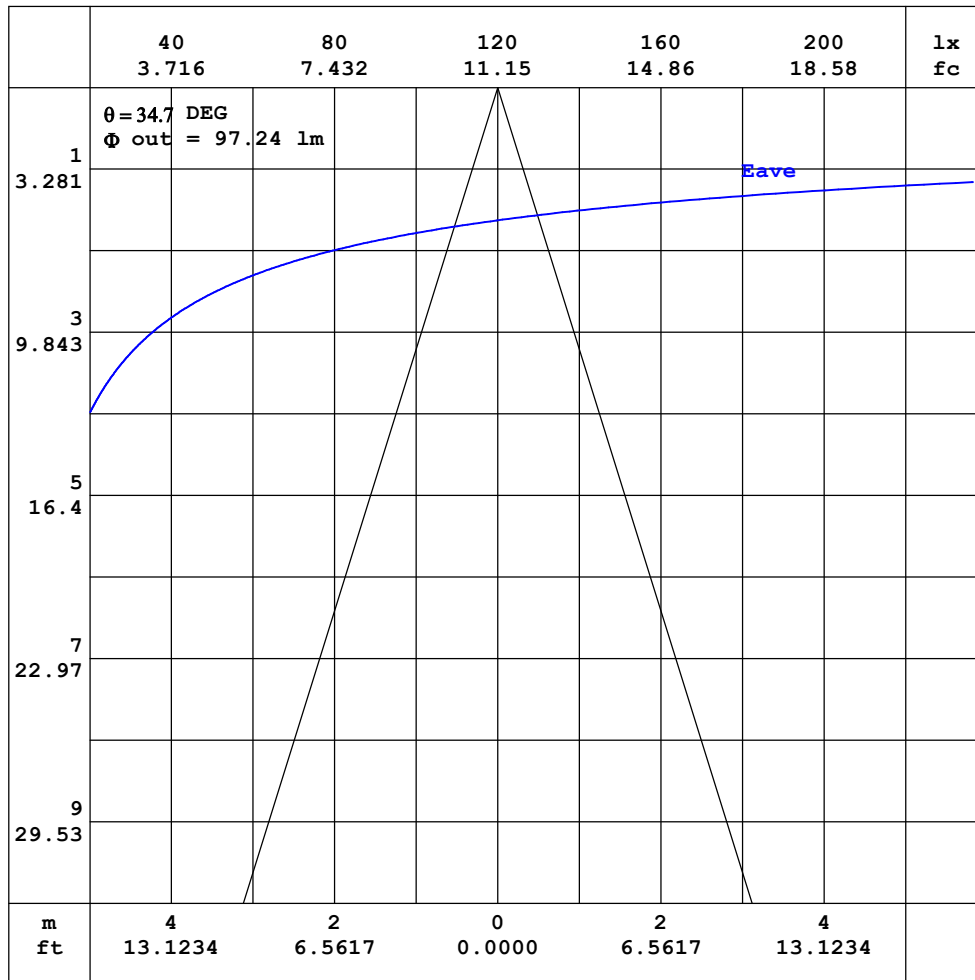


C Range: 0 - 180DEG
 C Interval: 15.0DEG
 Test Speed: HIGH
 Temperature: 20°C
 Operators: Elaine
 Test Date: 10 November 2023

γ Range: 0 - 90DEG
 γ Interval: 2.0DEG
 Test System: EVERFINE GO-SPEX500_V1 SYSTEM V2.00.473
 Humidity: 65.0%
 Test Distance: 3.100m [K=1.0000]
 Remarks: AGL-180-30N40
 3W / 3000K
 24V DC

AAI CURVES

Test:U:23.912V I:0.0897A P:2.1444W PF:1.0000 Freq:0Hz UTHDi:0.00% ITHDi:0.00% KDisp:0 Lamp Flux:244.174x1 lm		
NAME: AGL-180-30N40	TYPE: MR11 LAMP	WEIGHT:
SPEC.: AGL-180-30N40	DIM.:	SERIAL No.: -
MFR.: AQUALUX	SUR.:	Shielding Angle:



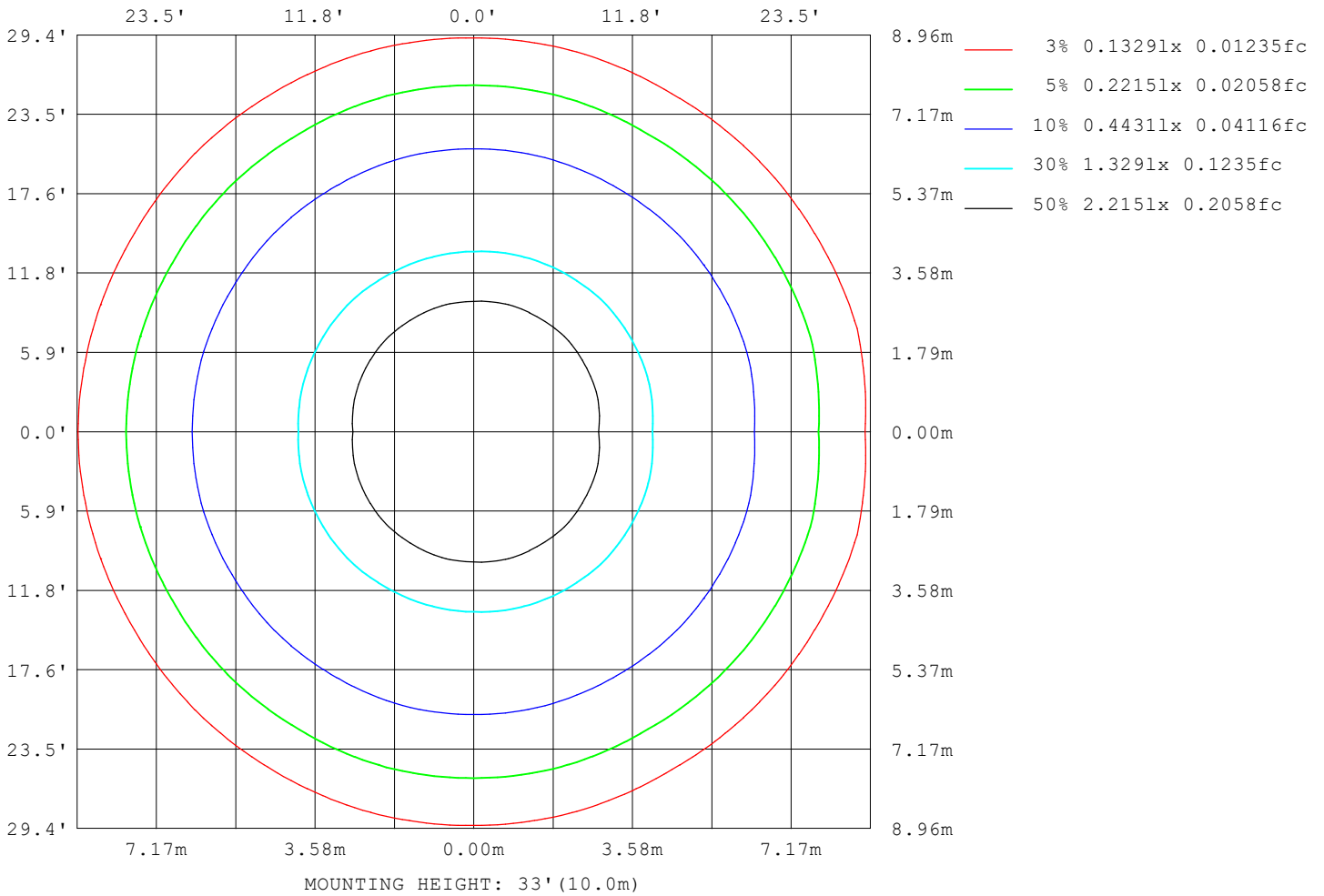
Note: The Curves indicate the illuminated area and the average illumination when the luminaire is at different distance.

C Range: 0 - 180DEG
C Interval: 15.0DEG
Test Speed: HIGH
Temperature: 20°C
Operators: Elaine
Test Date: 10 November 2023

γ Range: 0 - 90DEG
 γ Interval: 2.0DEG
Test System: EVERFINE GO-SPEX500_V1 SYSTEM V2.00.473
Humidity: 65.0%
Test Distance: 3.100m [K=1.0000]
Remarks: AGL-180-30N40
3W / 3000K
24V DC

ISOLUX DIAGRAM

Test:U:23.912V I:0.0897A P:2.1444W PF:1.0000 Freq:0Hz		
UTHDi:0.00% ITHDi:0.00% KDisp:0 Lamp Flux:244.174x1 lm		
NAME: AGL-180-30N40	TYPE: MR11 LAMP	WEIGHT:
SPEC.: AGL-180-30N40	DIM.:	SERIAL No.: -
MFR.: AQUALUX	SUR.:	Shielding Angle:



C Range: 0 - 180DEG
 C Interval: 15.0DEG
 Test Speed: HIGH
 Temperature: 20°C
 Operators: Elaine
 Test Date: 10 November 2023

γ Range: 0 - 90DEG
 γ Interval: 2.0DEG
 Test System: EVERFINE GO-SPEX500_V1 SYSTEM V2.00.473
 Humidity: 65.0%
 Test Distance: 3.100m [K=1.0000]
 Remarks: AGL-180-30N40
 3W / 3000K
 24V DC

LED Avg.L Report

Test:U:23.912V I:0.0897A P:2.1444W PF:1.0000 Freq:0Hz UTHDi:0.00% ITHDi:0.00% KDisp:0 Lamp Flux:244.174x1 lm		
NAME: AGL-180-30N40	TYPE: MR11 LAMP	WEIGHT:
SPEC.: AGL-180-30N40	DIM.:	SERIAL No.: -
MFR.: AQUALUX	SUR.:	Shielding Angle:

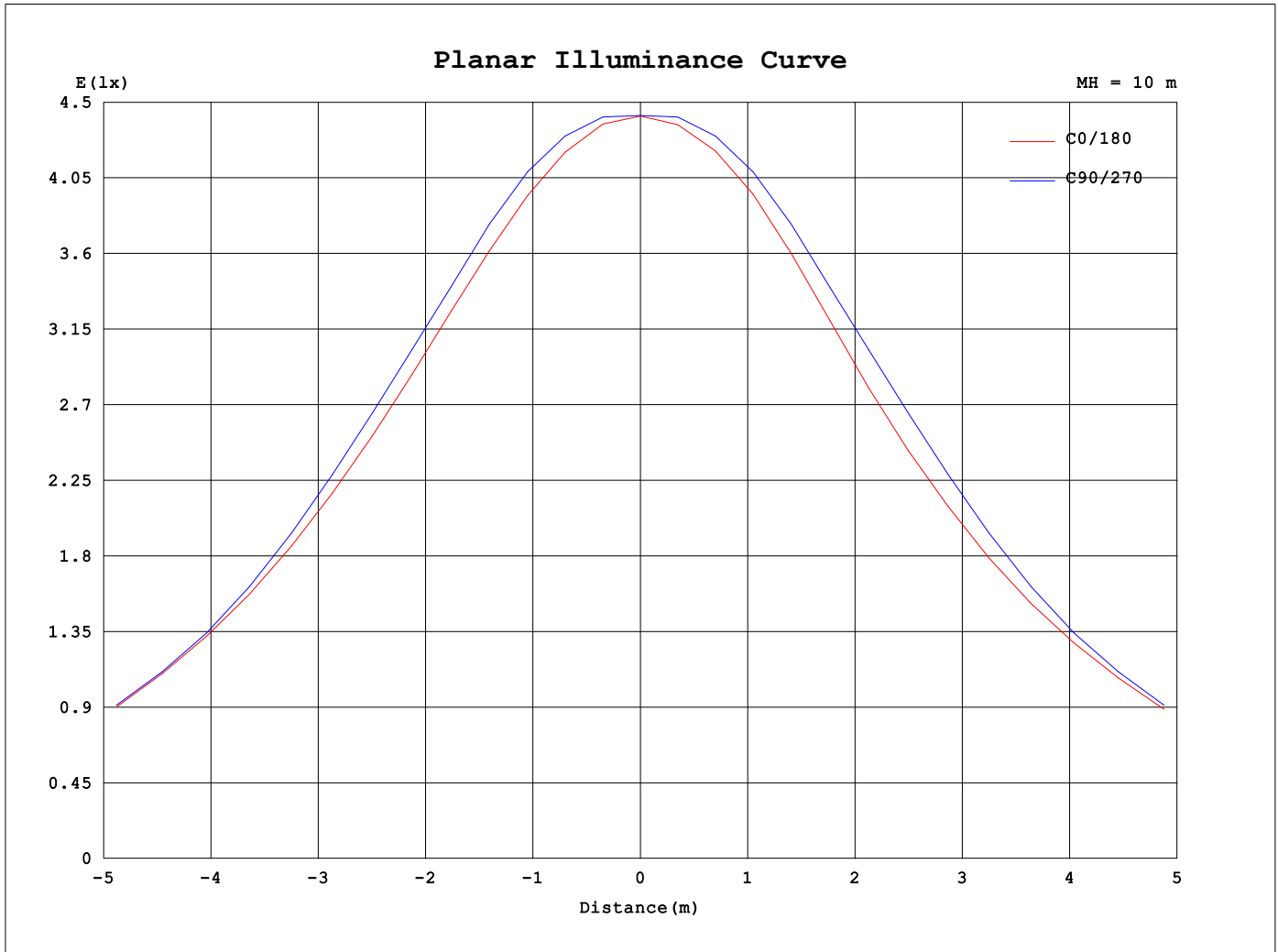
AvgL	cd/m2
L_0~180 (65) av	6881
L_0~180 (75) av	4221
L_0~180 (85) av	2845
L_90~270 (65) av	7489
L_90~270 (75) av	4786
L_90~270 (85) av	3557
L_45 (65) av	6256
L_45 (75) av	3978
L_45 (85) av	3063

Standard: GB/T 29293-2012

C Range: 0 - 180DEG
 C Interval: 15.0DEG
 Test Speed: HIGH
 Temperature:20°C
 Operators:Elaine
 Test Date:10 November 2023

γ Range: 0 - 90DEG
 γ Interval: 2.0DEG
 Test System:EVERFINE GO-SPEX500_V1 SYSTEM V2.00.473
 Humidity:65.0%
 Test Distance:3.100m [K=1.0000]
 Remarks: AGL-180-30N40
 3W / 3000K
 24V DC

Planar Illuminance Curve



C Range: 0 - 180DEG
 C Interval: 15.0DEG
 Test Speed: HIGH
 Temperature: 20°C
 Operators: Elaine
 Test Date: 10 November 2023

γ Range: 0 - 90DEG
 γ Interval: 2.0DEG
 Test System: EVERFINE GO-SPEX500_V1 SYSTEM V2.00.473
 Humidity: 65.0%
 Test Distance: 3.100m [K=1.0000]
 Remarks: AGL-180-30N40
 3W / 3000K
 24V DC

