

# Aqualux Photometric Simulations - Uplights / Spotlights

The following images depict a range of standard beam angles and power options in both an isolux plot and a ray traced render. They are simulations based on our latest set of IES files as of March 2024.

The scene shows a vertical surface 2800mm high with lights spaced 2000mm apart

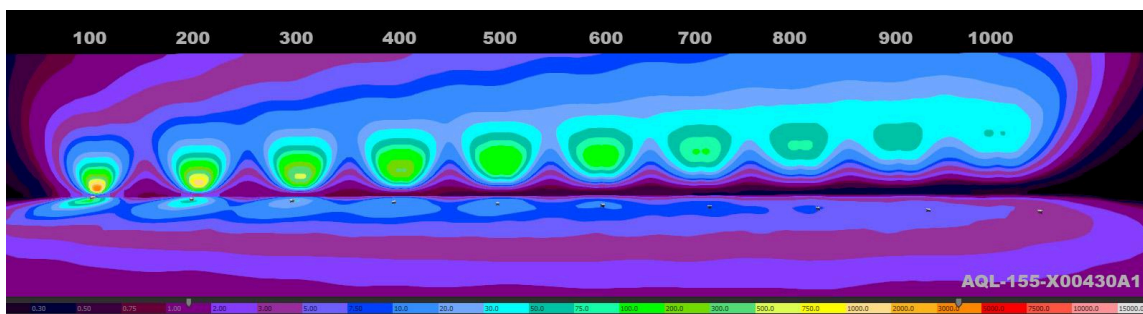
They are in two primary groups - a series of staggered offsets showing the effect of increased distance from the illuminated surface and then a set of fixed 200mm offset scenes. The final set shows the A1 optic at increasing distances.

These simulations apply to any Aqualux product that uses our standard lens and LED. This includes AQL-155, AQL-115, AQL-530 etc. Check with us to confirm if the product you are looking at is covered by this document.

## ISOLUX Plot - Example

---

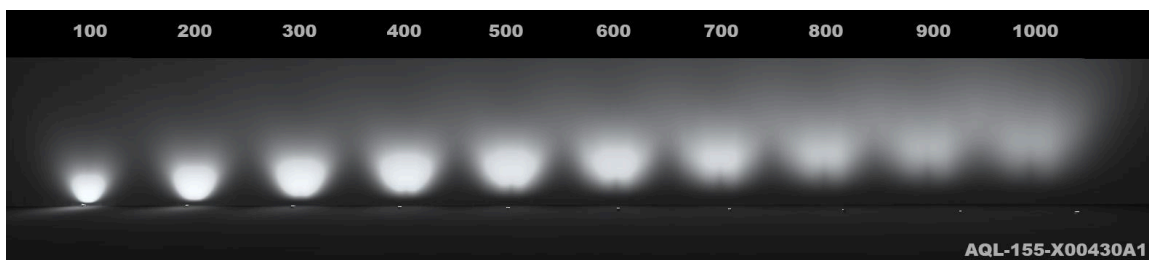
An Isolux plot like the one below is a heatmap showing the zones of illuminance in false colour. This is a bit easier to see than a render however the effects are exaggerated and whilst it estimates the absolute amount of light in a given area (useful for planning / compliance purposes) it's not always a good indication of how a scene will look to the human eye.



## Raytrace / Render - Example

---

A raytrace render is a simulation that attempts to depict how the light will look to the human eye, estimating the illuminance relative to a completely black or dark environment. This is important to note as most outdoor and architectural scenes are not completely dark, there is usually spill light from various other sources. However it's a better indication of how it will look the eye than an Iso lux plot, although it's not much use for planning / compliance.

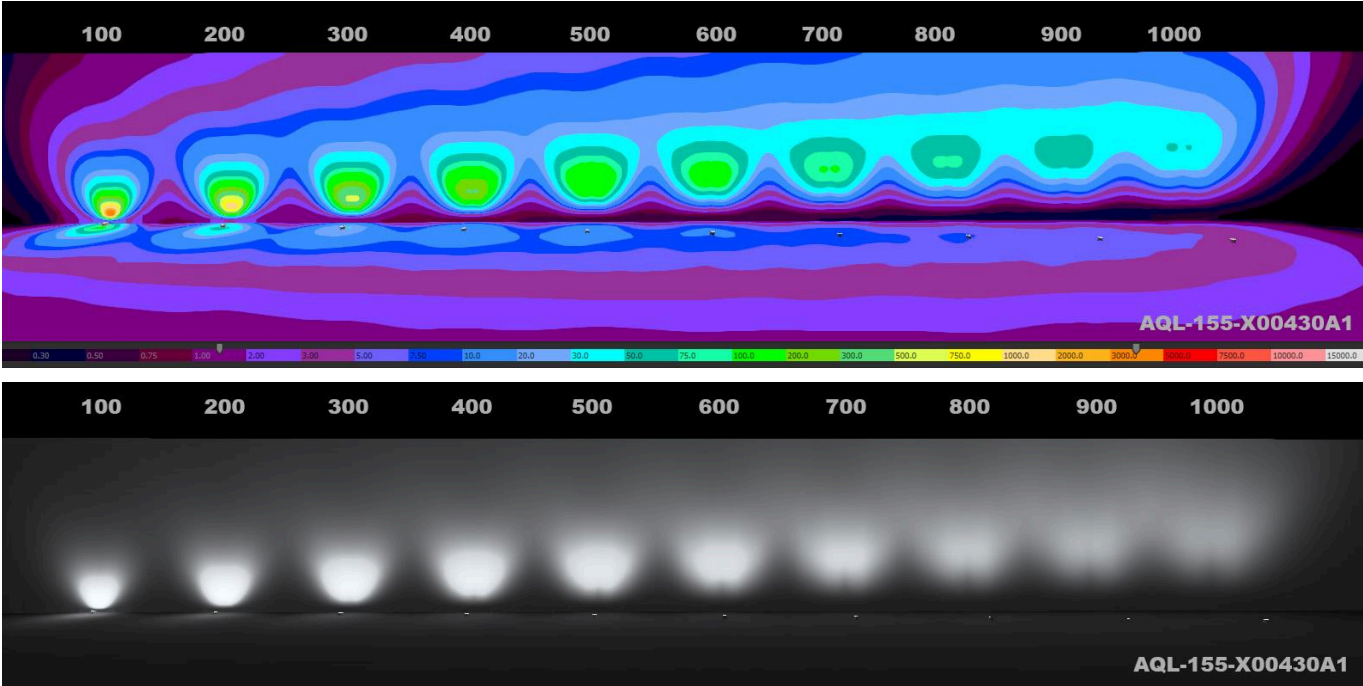


# Table of Contents

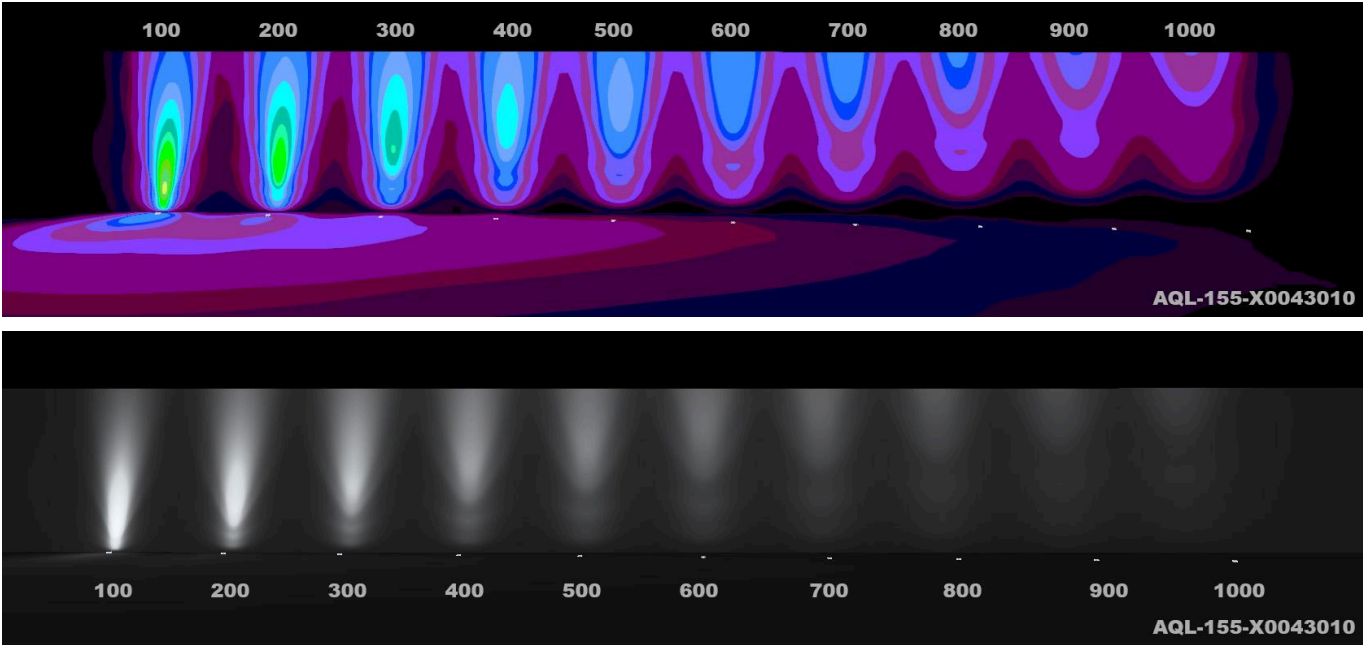
ISOLUX Plot - Example.....	1
Raytrace / Render - Example.....	1
<b>Offset Distances - 100 ~ 1000mm.....</b>	<b>3</b>
AQL-155 / 4W / Asymmetric (Wall Wash) Optic.....	3
AQL-155 / 4W / 25° Optic.....	4
AQL-155 / 4W / 40° Optic.....	4
AQL-155 / 4W / 55° Optic.....	5
AQL-155 / 7W / 10° Optic.....	5
AQL-155 / 7W / 25° Optic.....	6
AQL-155 / 7W / 40° Optic.....	6
AQL-155 / 7W / 55° Optic.....	7
<b>200mm Fixed Offset - 4W.....</b>	<b>8</b>
AQL-155 / 4W / 10° Optic / ISOLUX.....	8
AQL-155 / 4W / 10° Optic / Render.....	9
AQL-155 / 4W / 25° Optic / ISOLUX.....	10
AQL-155 / 4W / 25° Optic / Render.....	11
AQL-155 / 4W / 40° Optic / ISOLUX.....	12
AQL-155 / 4W / 40° Optic / Render.....	13
AQL-155 / 4W / 55° Optic / ISOLUX.....	14
AQL-155 / 4W / 55° Optic / Render.....	15
<b>200mm Fixed Offset - 7W.....</b>	<b>16</b>
AQL-155 / 7W / 10° Optic / ISOLUX.....	16
AQL-155 / 7W / 10° Optic / Render.....	17
AQL-155 / 7W / 25° Optic / ISOLUX.....	18
AQL-155 / 7W / 25° Optic / Render.....	19
AQL-155 / 7W / 40° Optic / ISOLUX.....	20
AQL-155 / 7W / 40° Optic / Render.....	21
AQL-155 / 7W / 55° Optic / ISOLUX.....	22
AQL-155 / 7W / 55° Optic / Render.....	23
<b>Fixed Offsets - 4W - Asymmetric.....</b>	<b>24</b>
AQL-155 / 4W / Asymmetric (Wall Wash) Optic / 100mm Offset.....	24
AQL-155 / 4W / Asymmetric (Wall Wash) Optic / 200mm Offset.....	25
AQL-155 / 4W / Asymmetric (Wall Wash) Optic / 300mm Offset.....	26
AQL-155 / 4W / Asymmetric (Wall Wash) Optic / 400mm Offset.....	27
AQL-155 / 4W / Asymmetric (Wall Wash) Optic / 500mm Offset.....	28
AQL-155 / 4W / Asymmetric (Wall Wash) Optic / 600mm Offset.....	29
AQL-155 / 4W / Asymmetric (Wall Wash) Optic / 700mm Offset.....	30
AQL-155 / 4W / Asymmetric (Wall Wash) Optic / 800mm Offset.....	31
AQL-155 / 4W / Asymmetric (Wall Wash) Optic / 900mm Offset.....	32
AQL-155 / 4W / Asymmetric (Wall Wash) Optic / 1000mm Offset.....	33

# Offset Distances - 100 ~ 1000mm

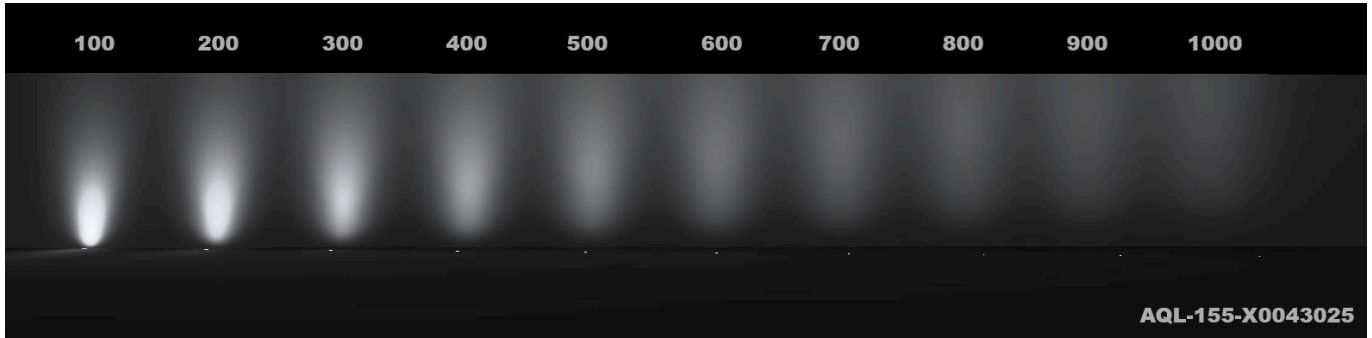
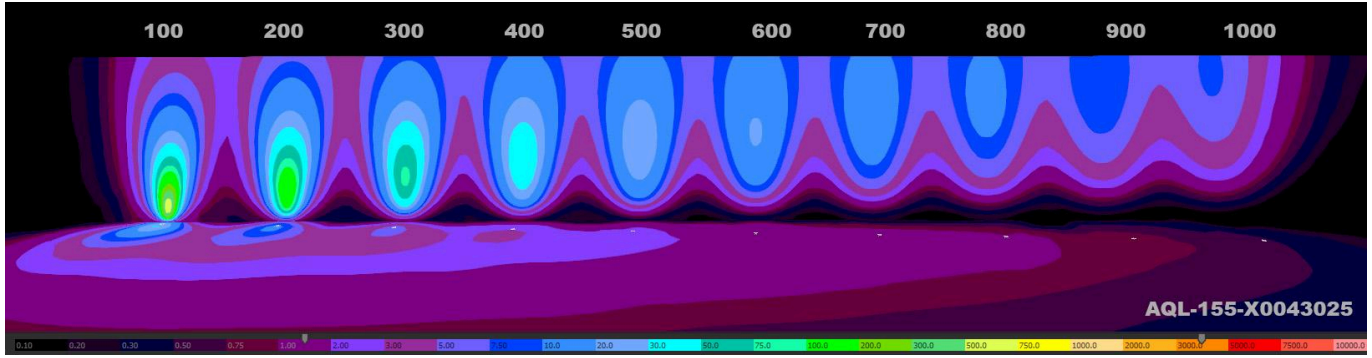
AQL-155 / 4W / Asymmetric (Wall Wash) Optic



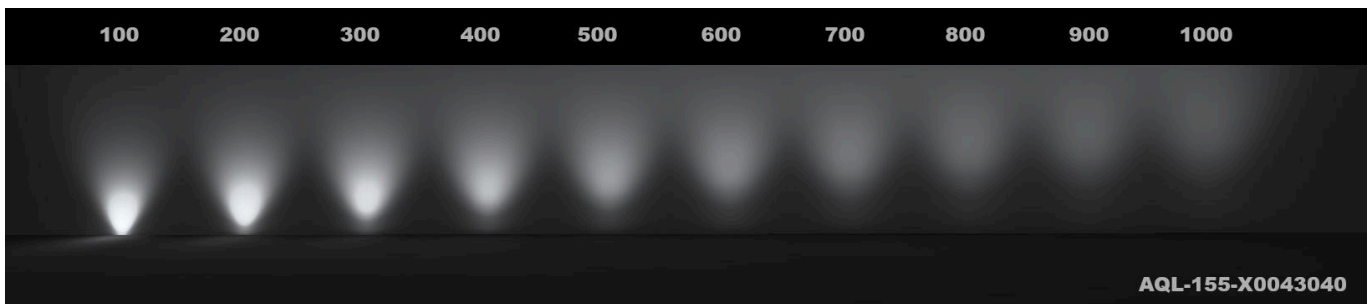
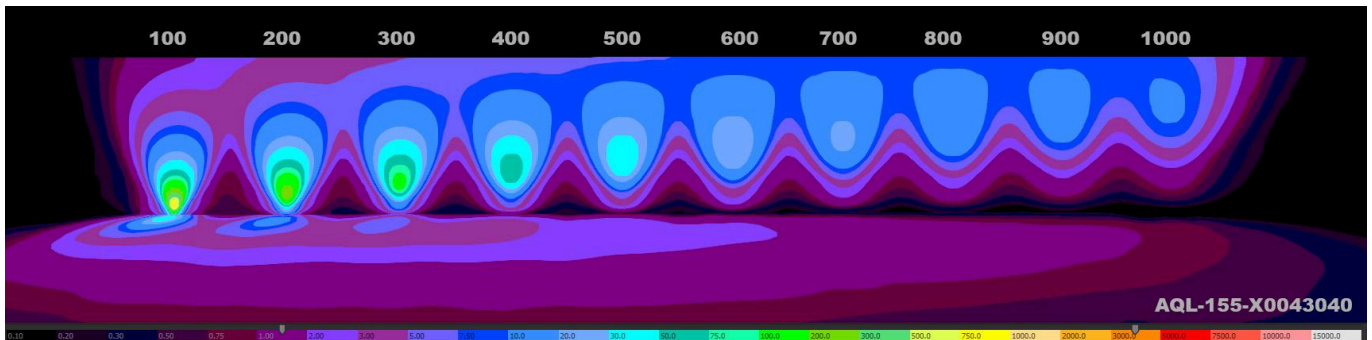
AQL-155 / 4W / 10° Optic



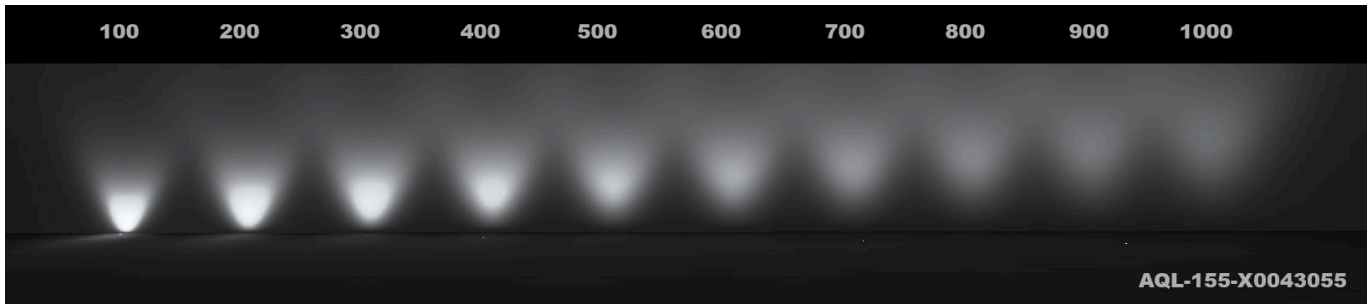
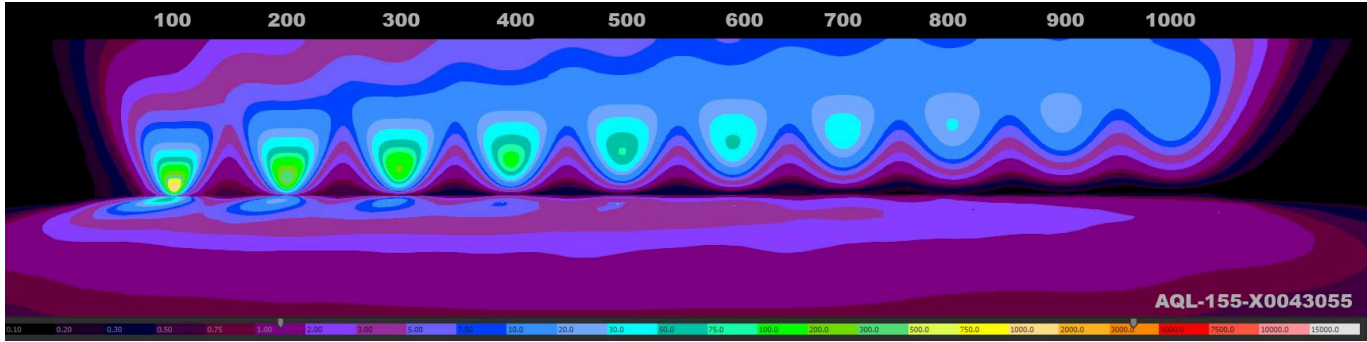
## AQL-155 / 4W / 25° Optic



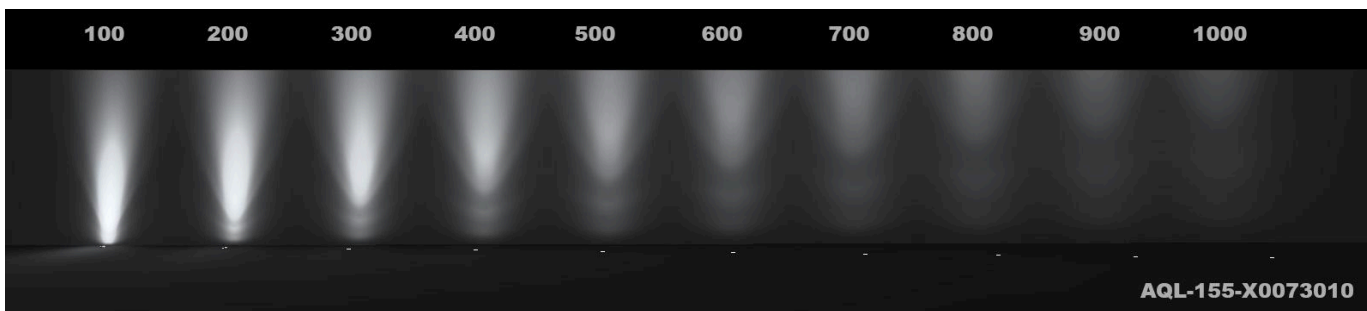
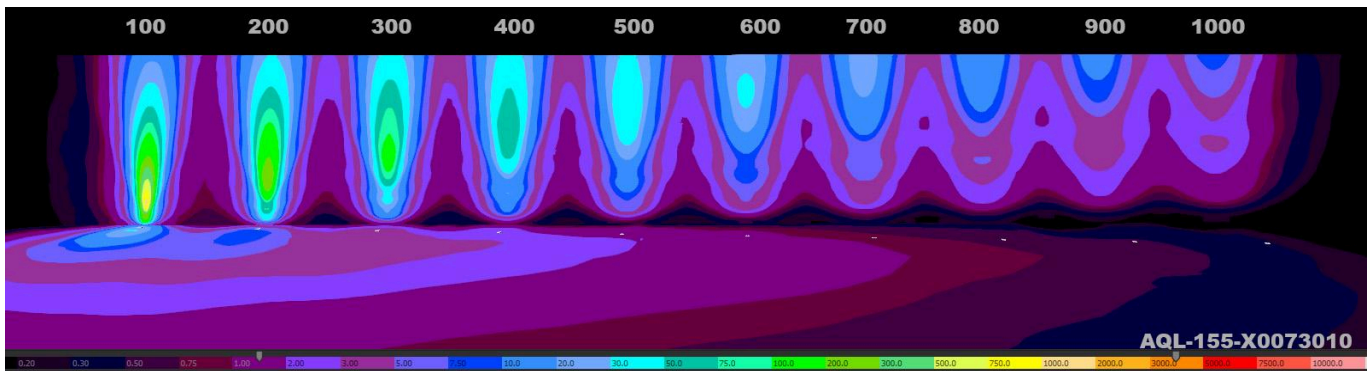
## AQL-155 / 4W / 40° Optic



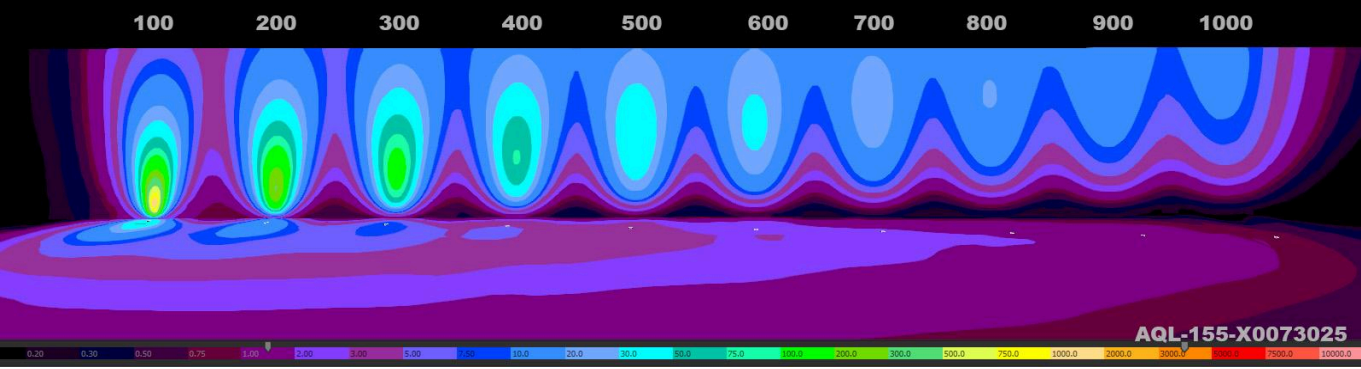
## AQL-155 / 4W / 55° Optic



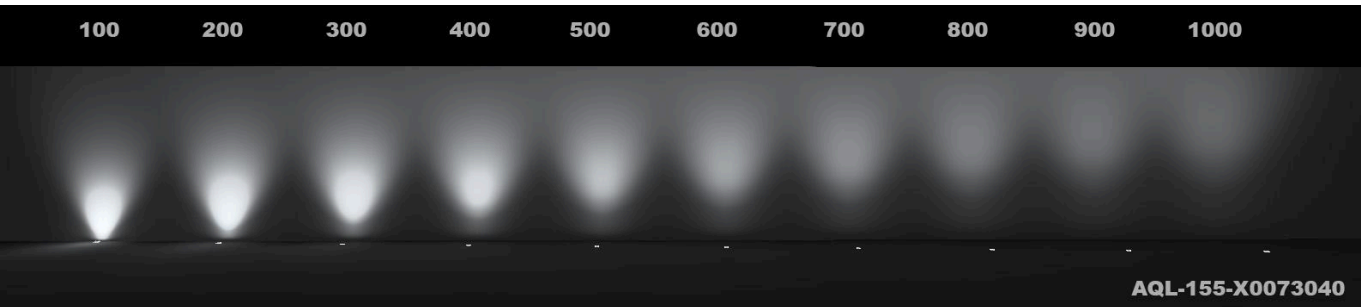
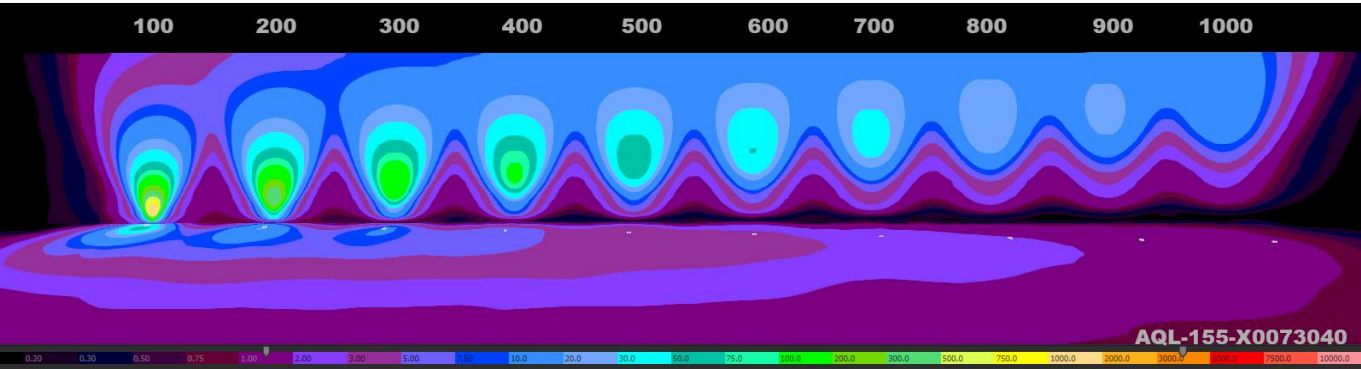
## AQL-155 / 7W / 10° Optic



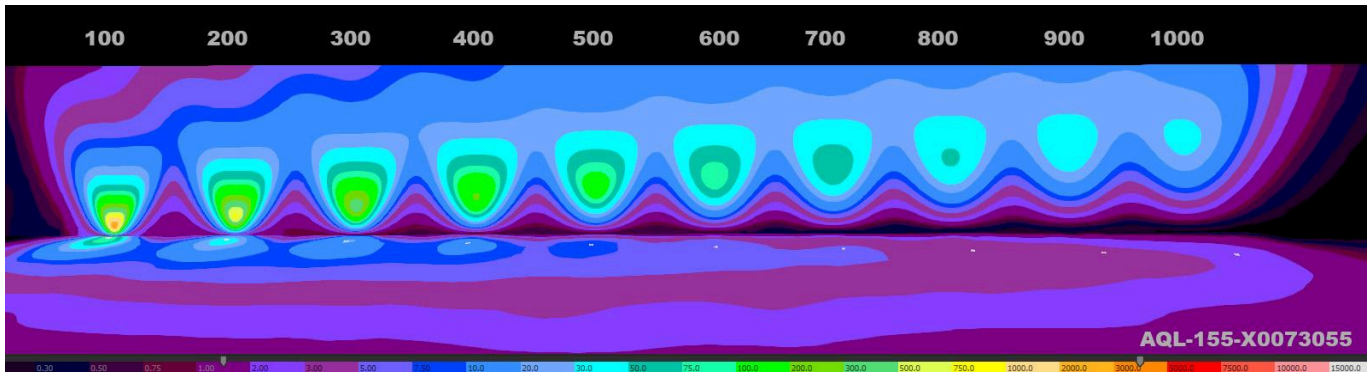
AQL-155 / 7W / 25° Optic



AQL-155 / 7W / 40° Optic

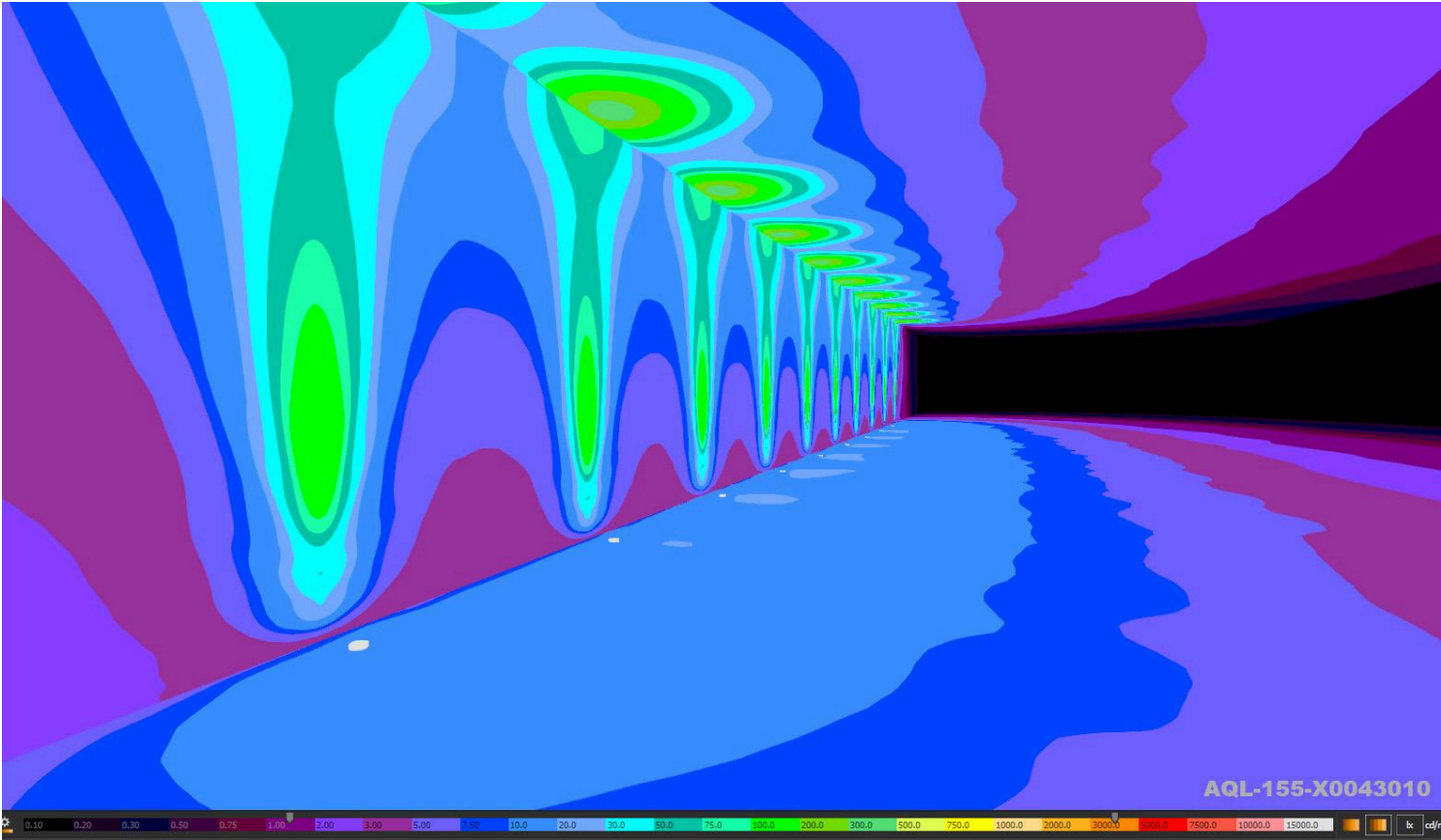
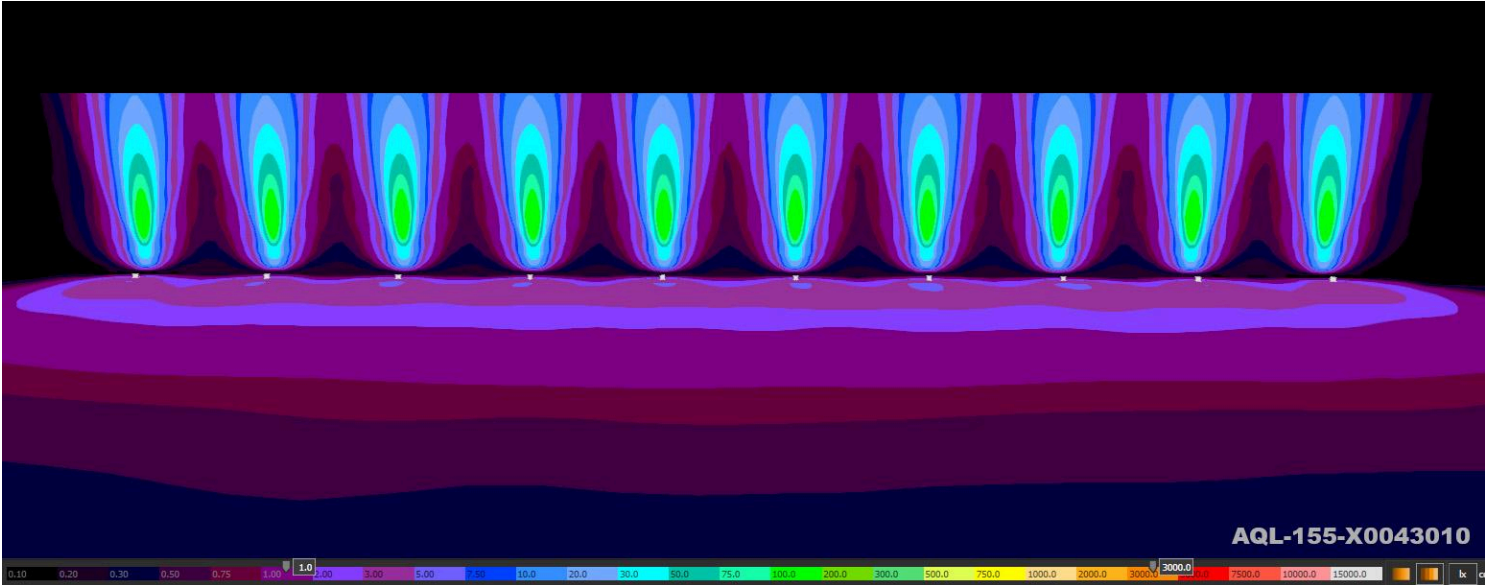


# AQL-155 / 7W / 55° Optic

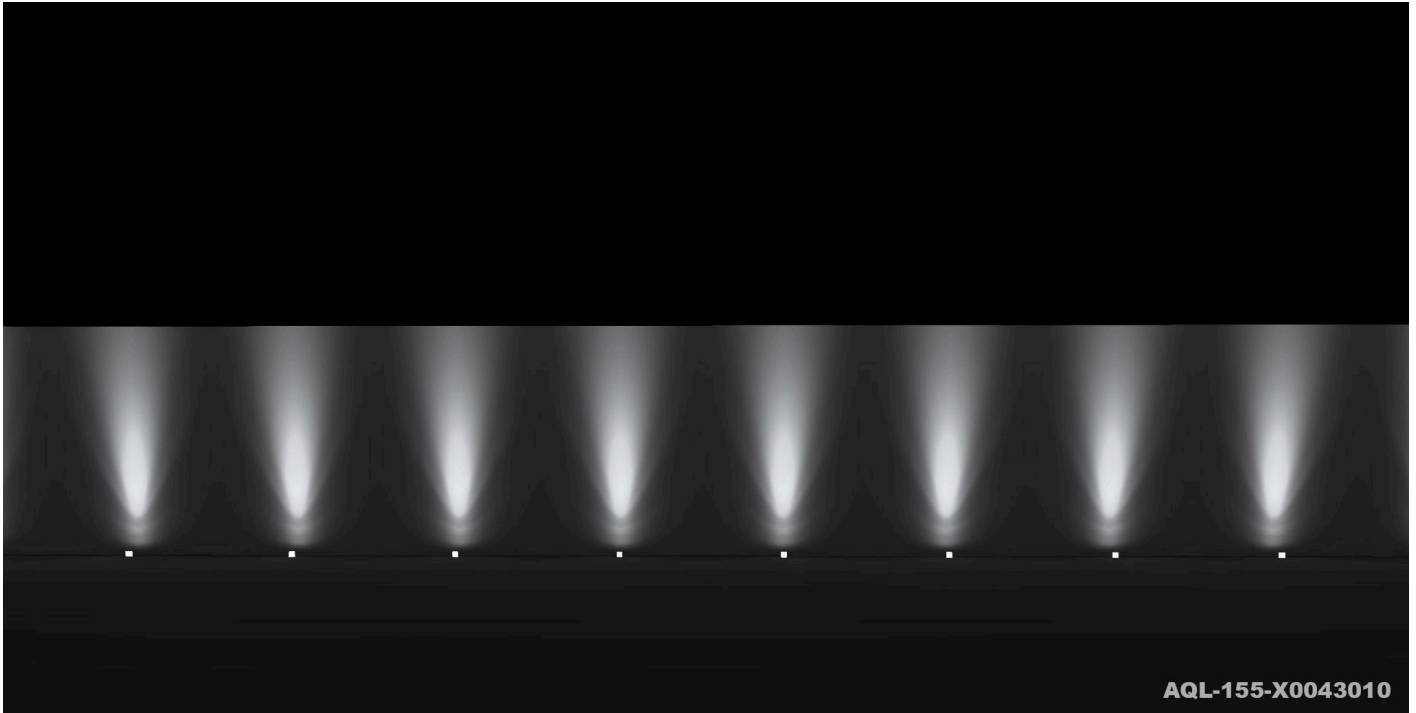


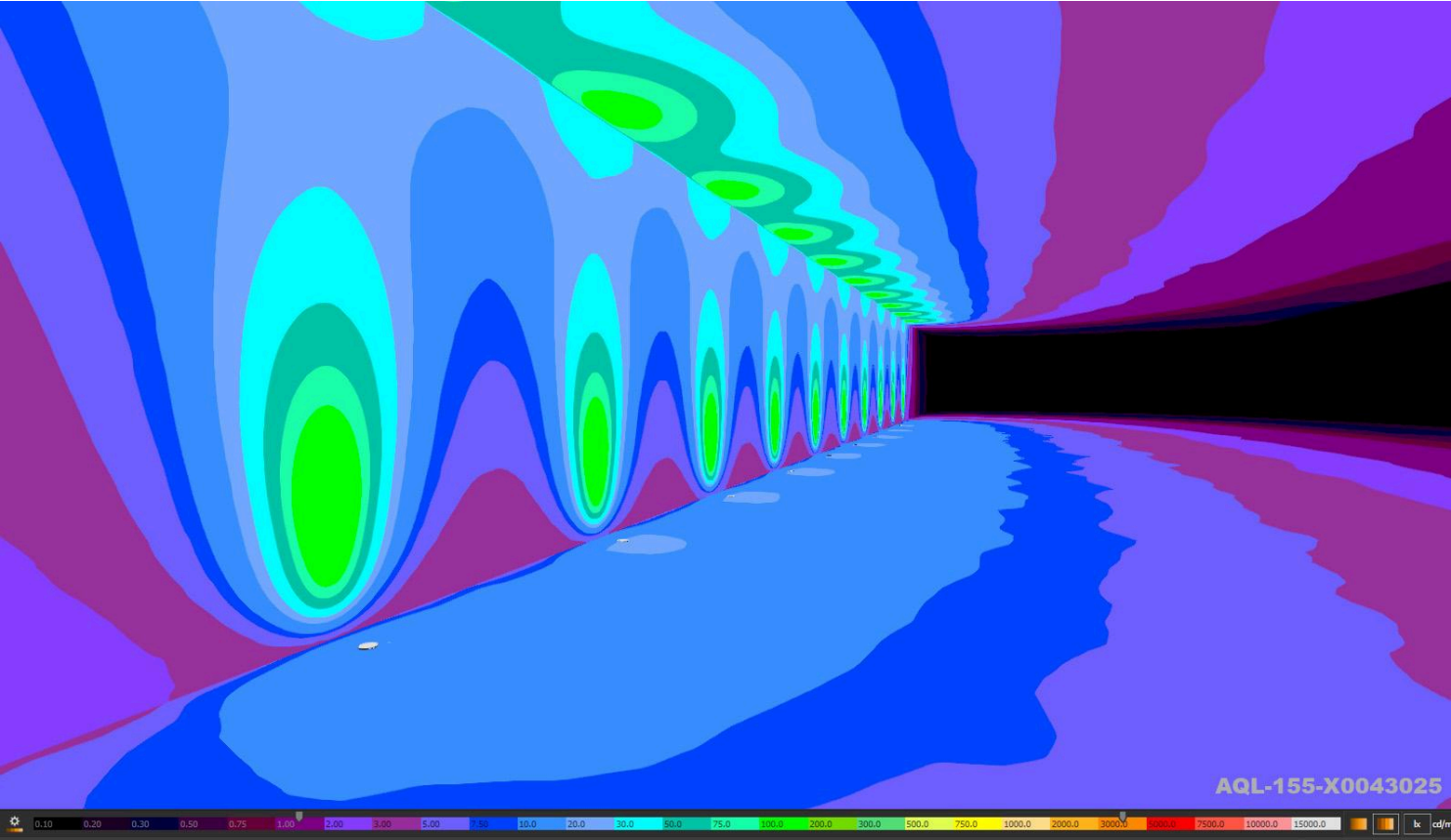
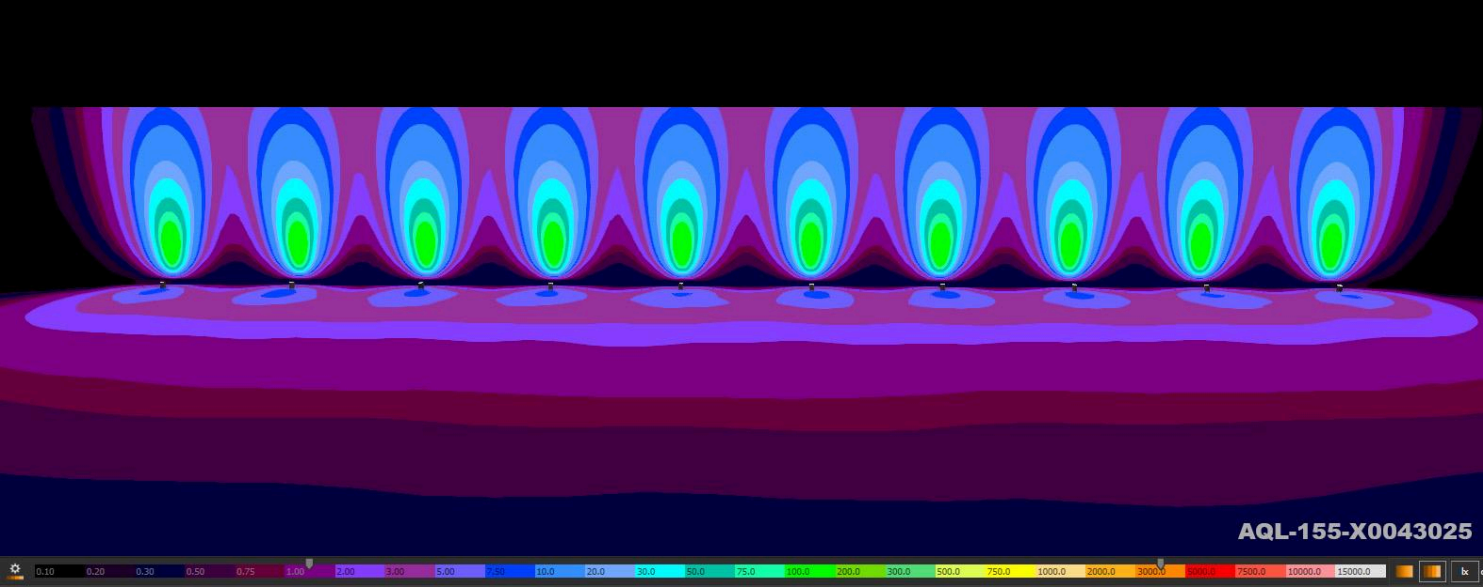
# 200mm Fixed Offset - 4W

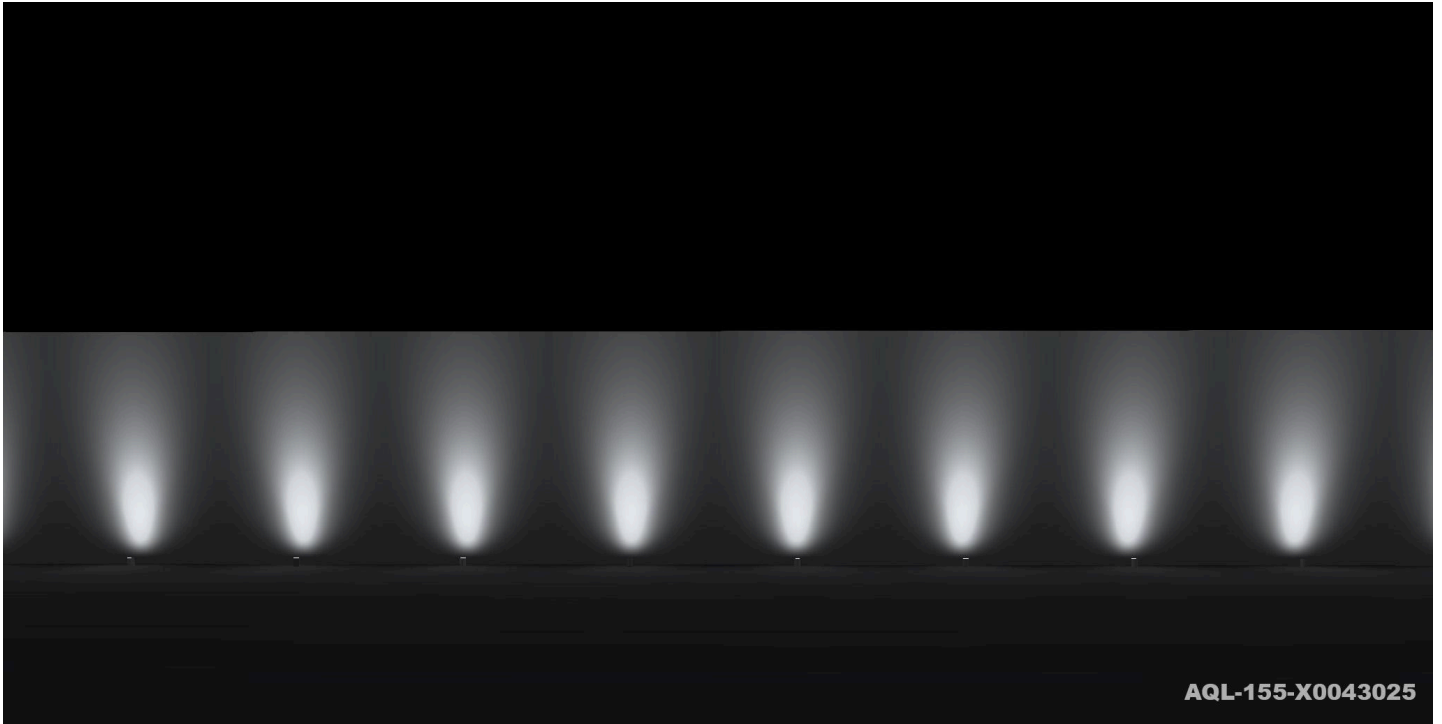
AQL-155 / 4W / 10° Optic / ISOLUX

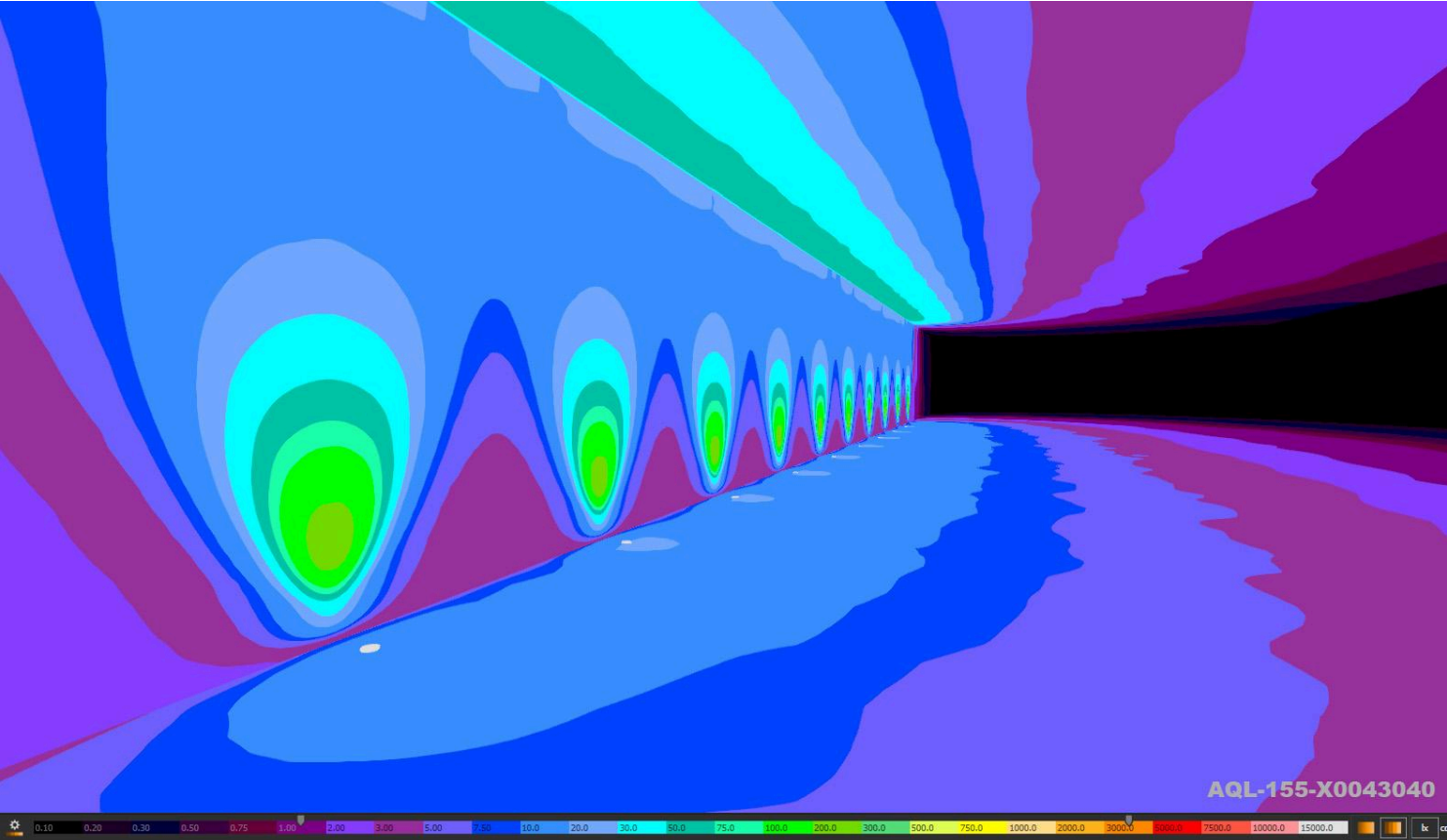
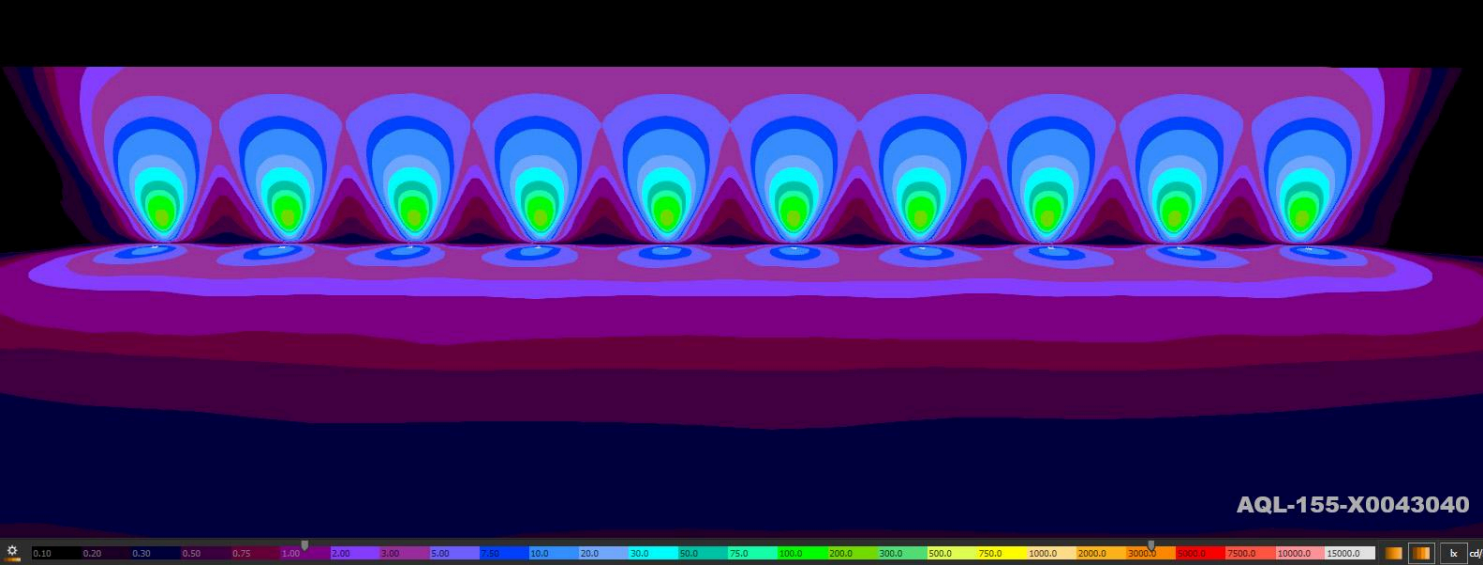


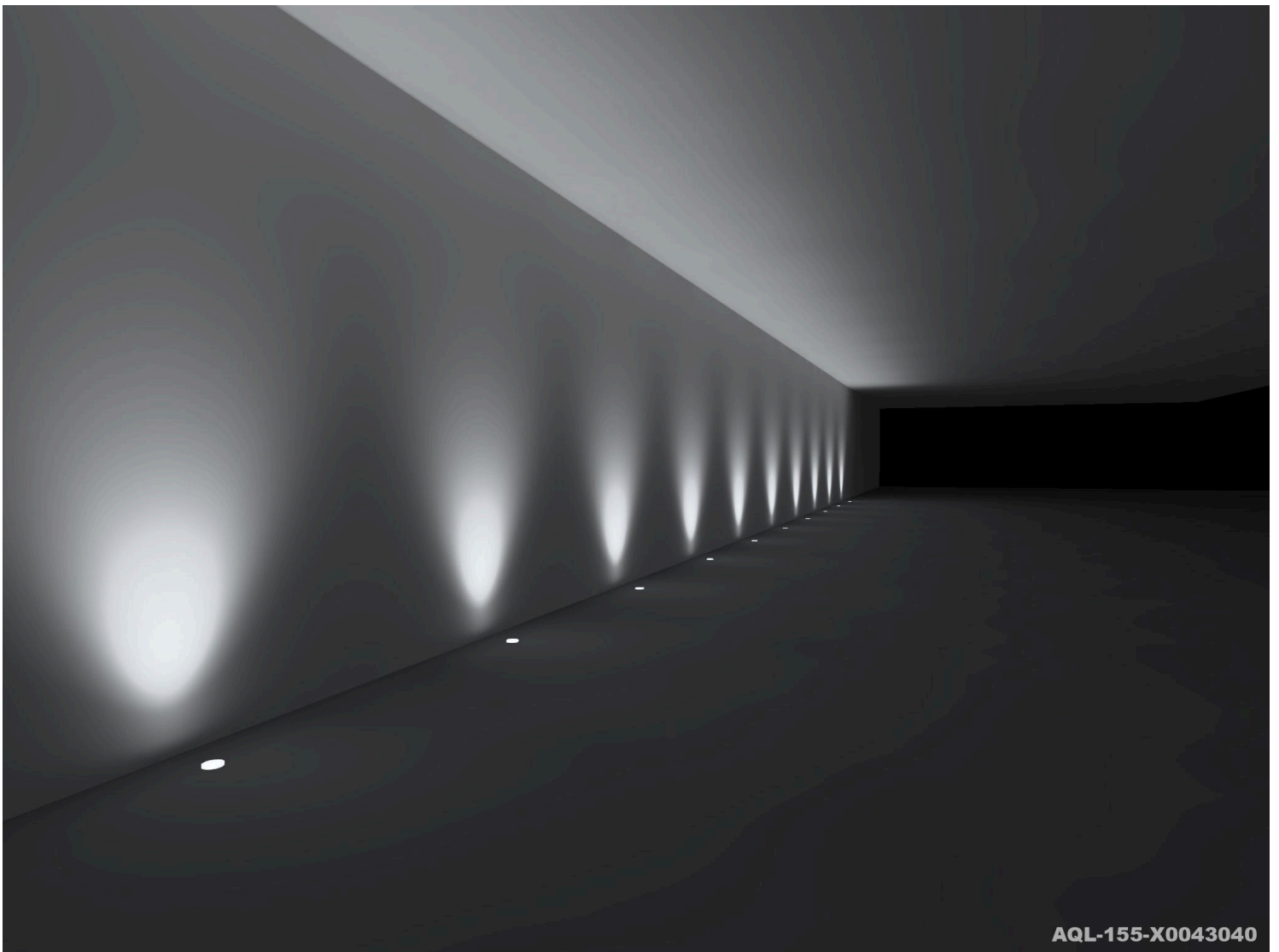
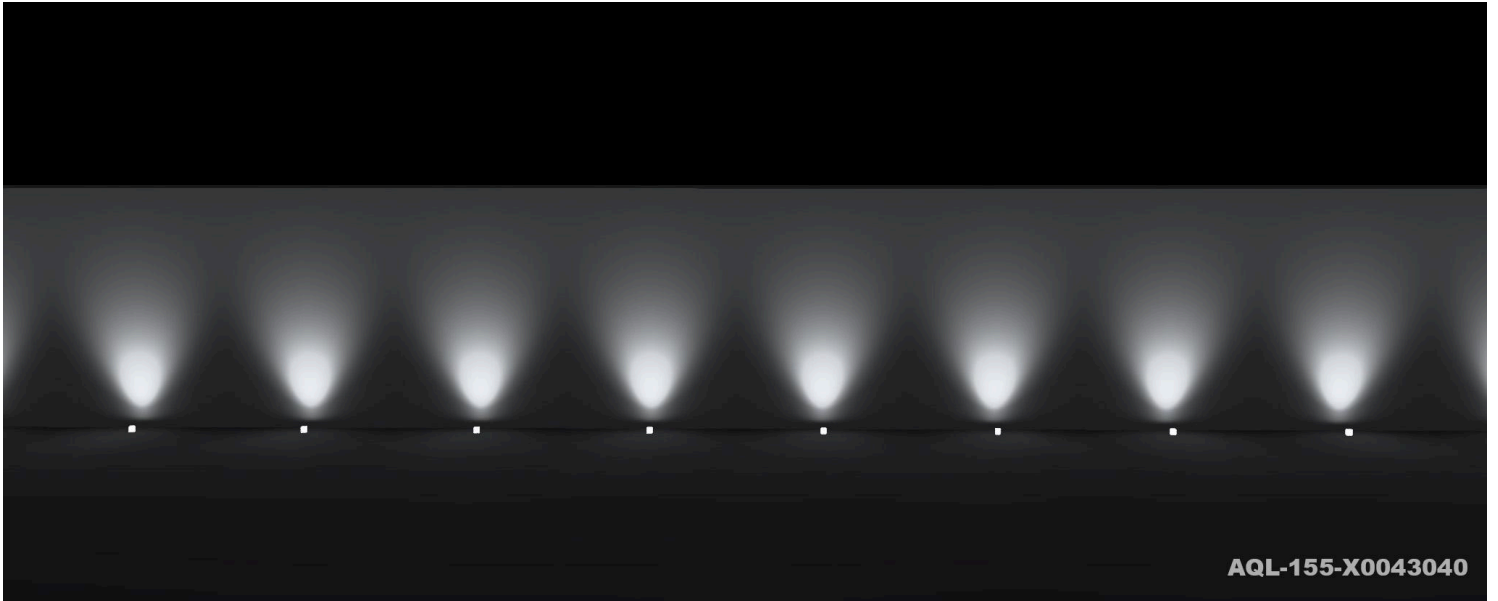


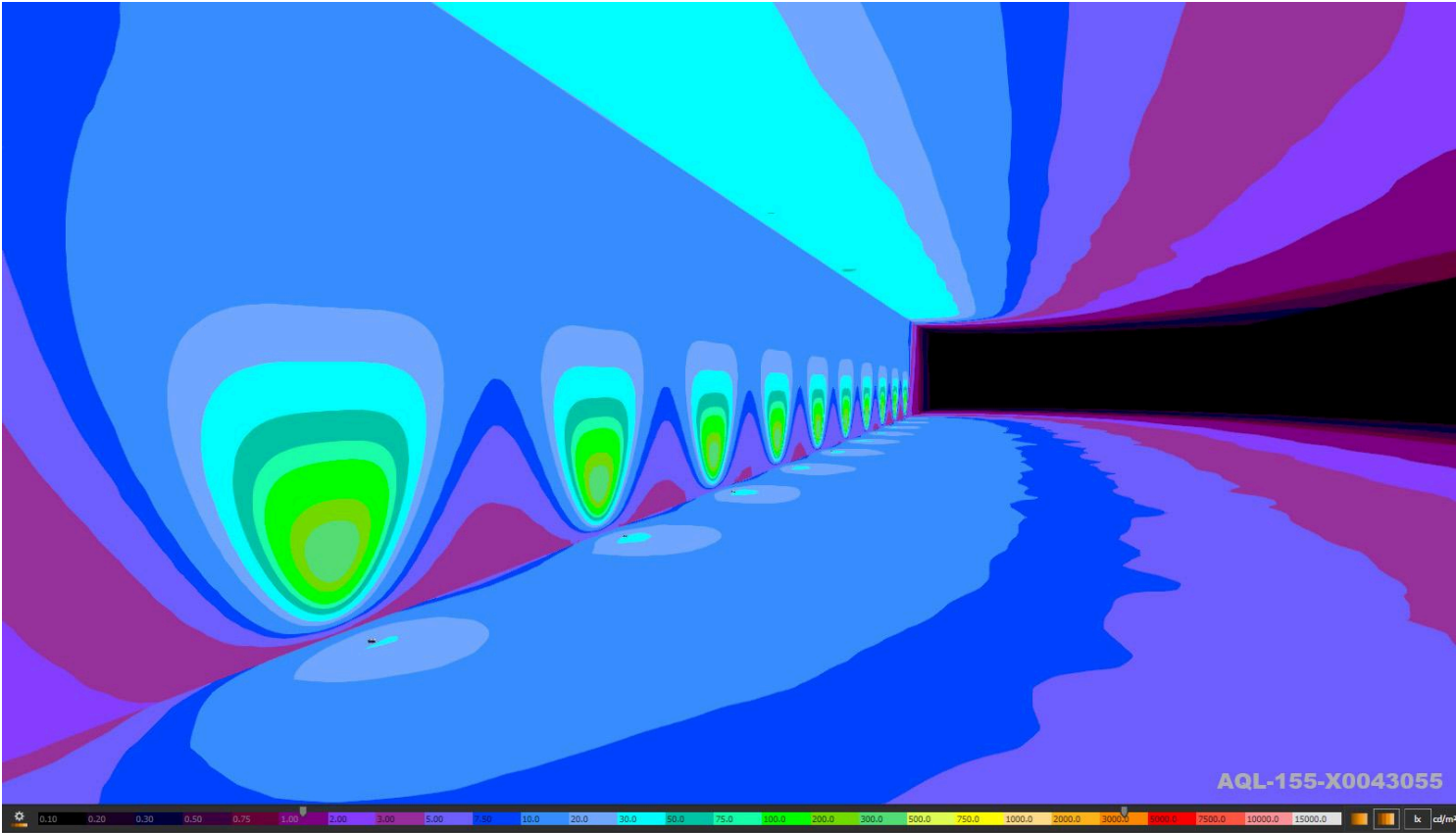
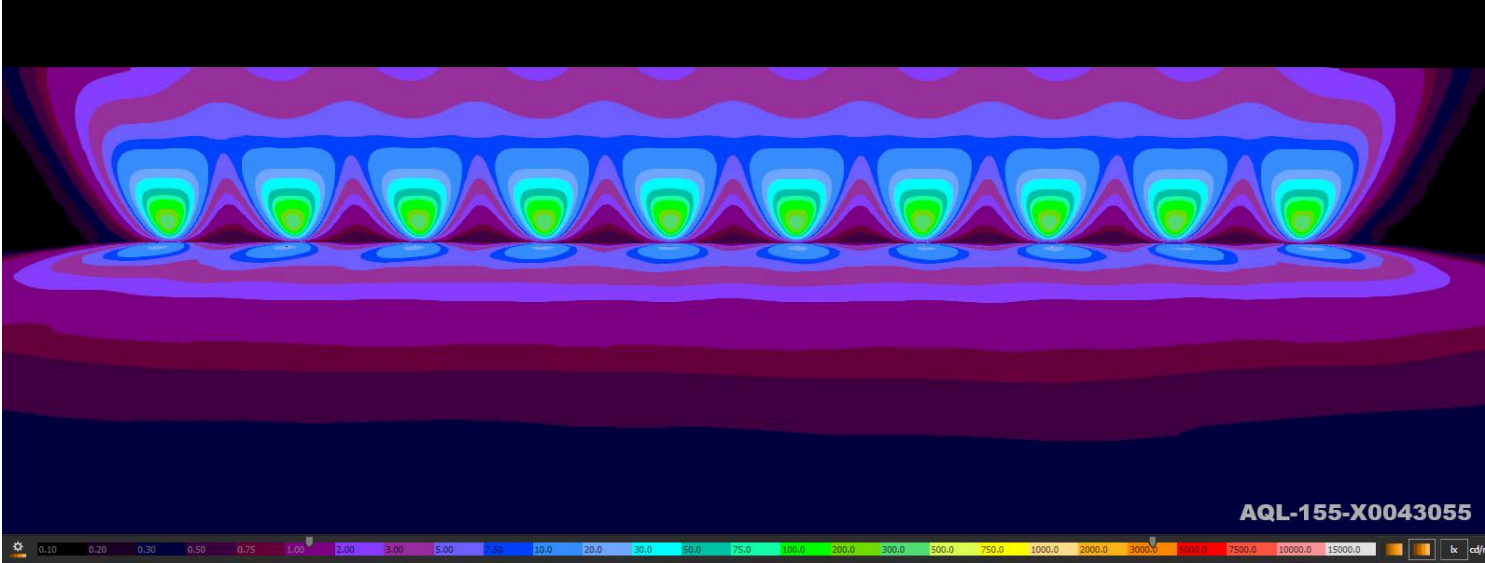


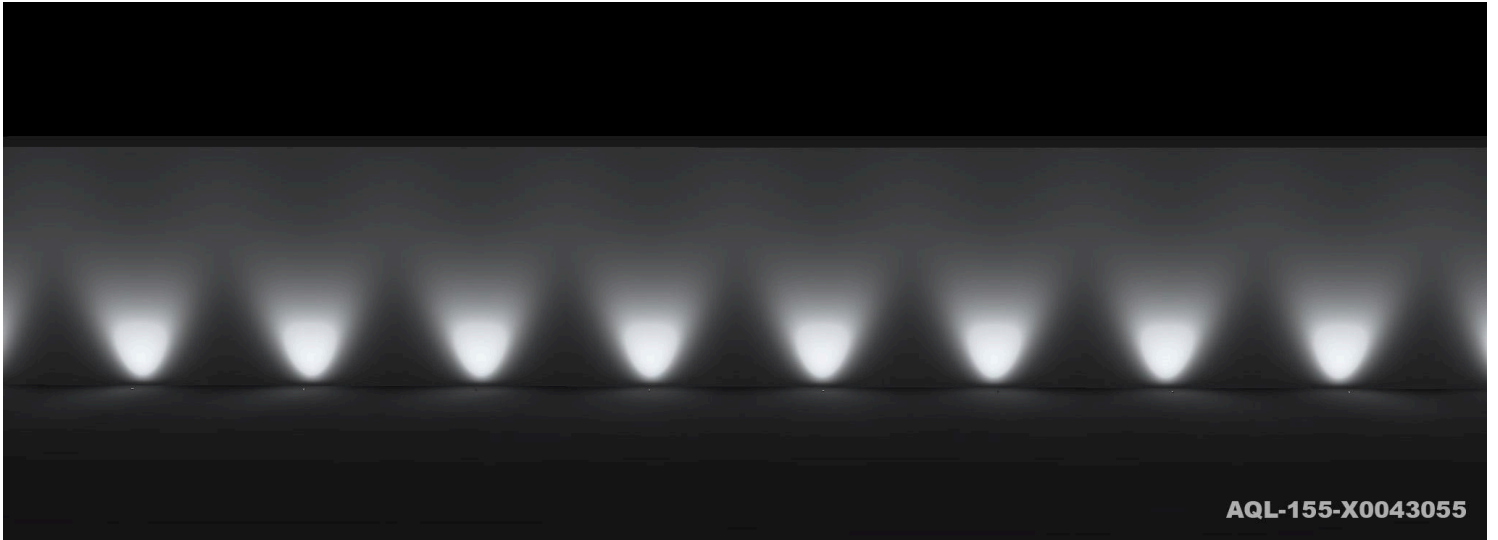




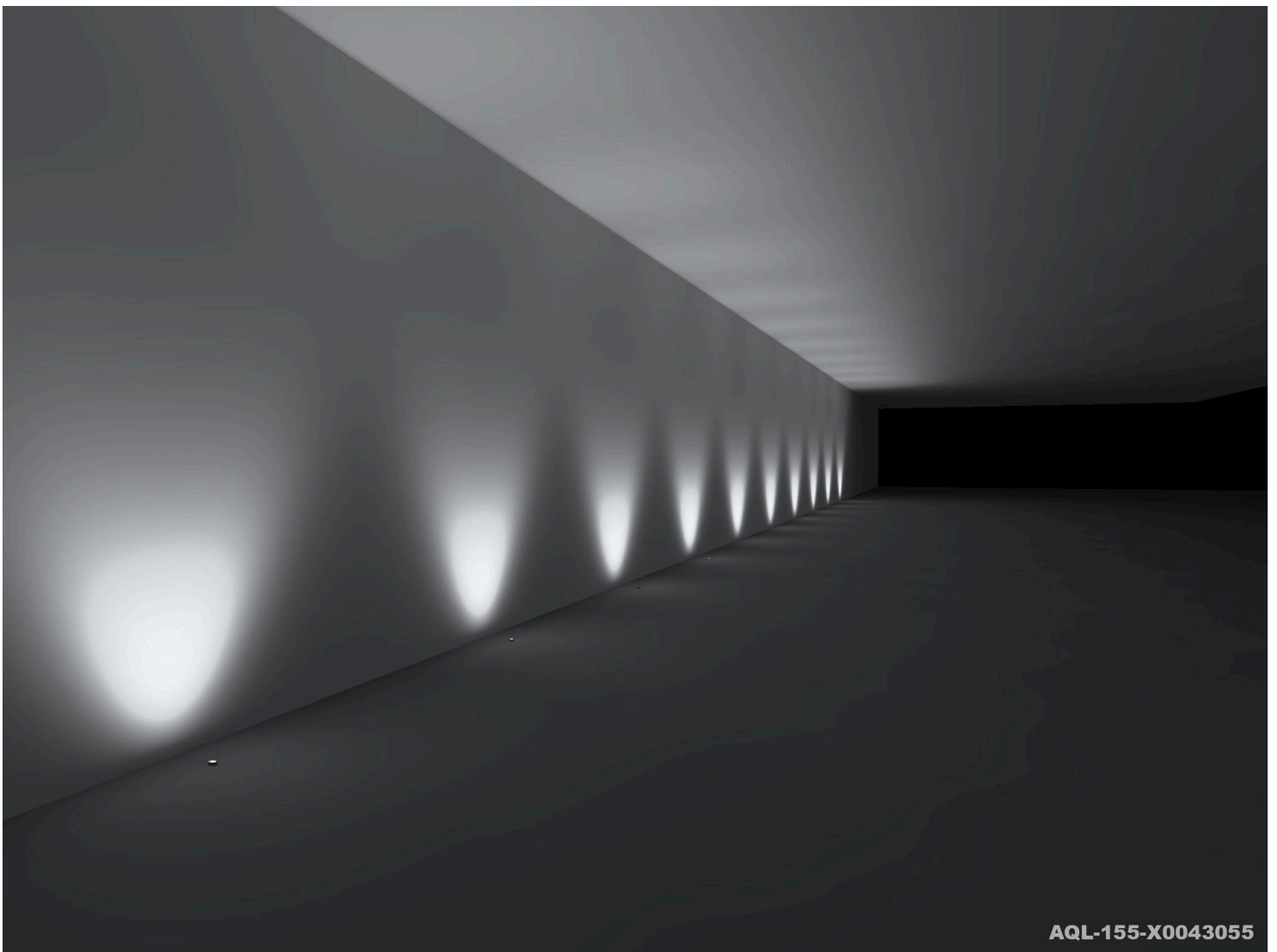








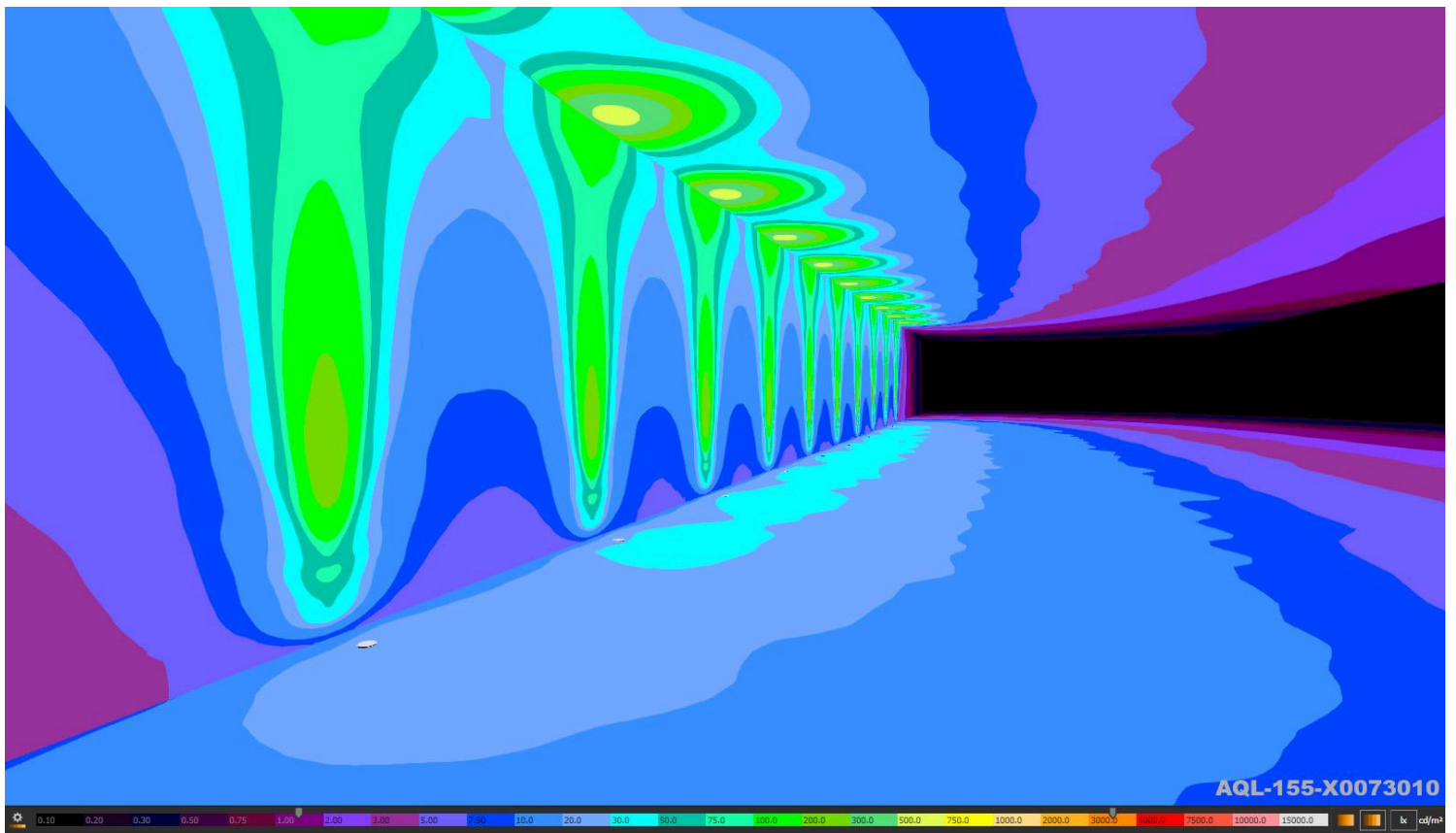
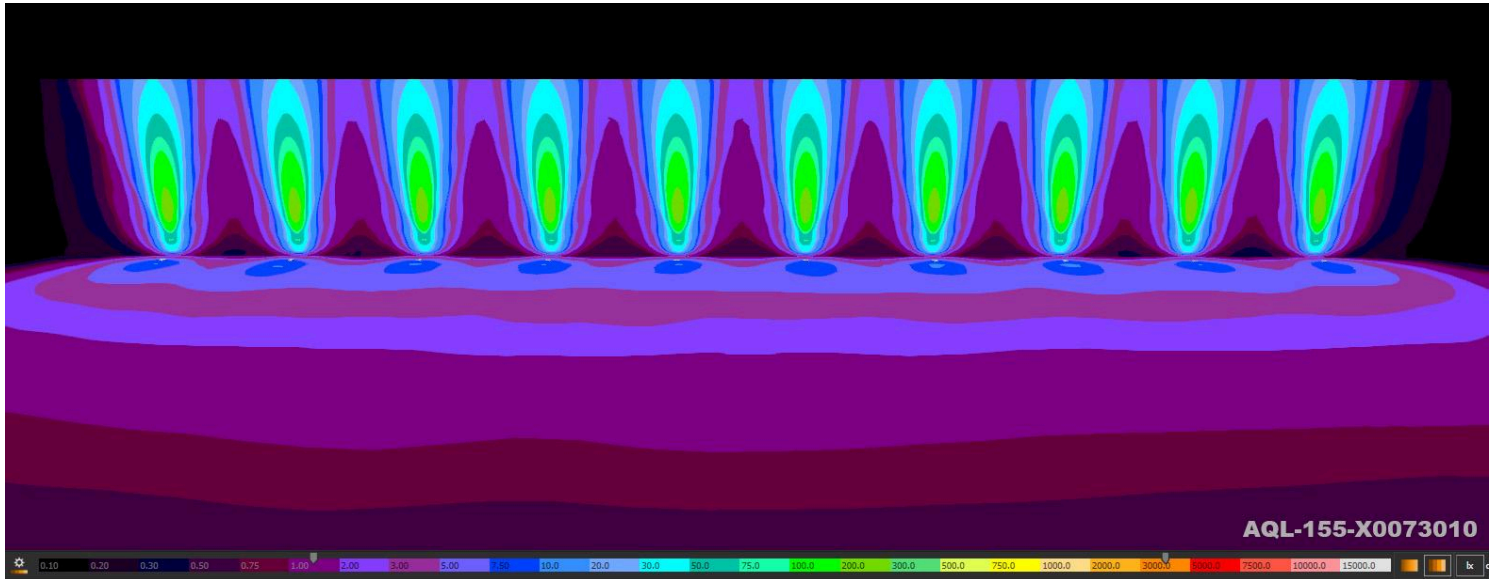
AQL-155-X0043055



AQL-155-X0043055

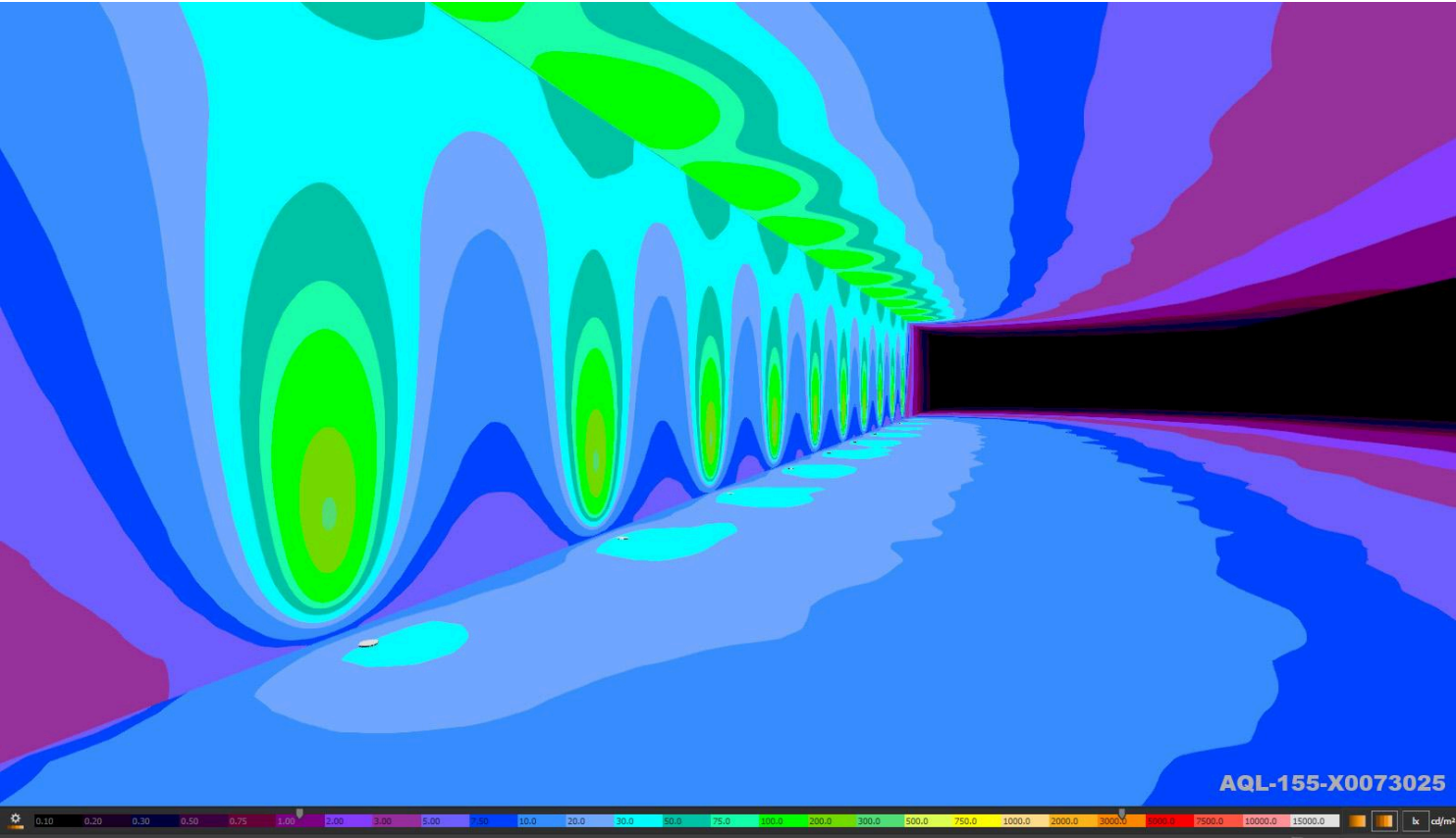
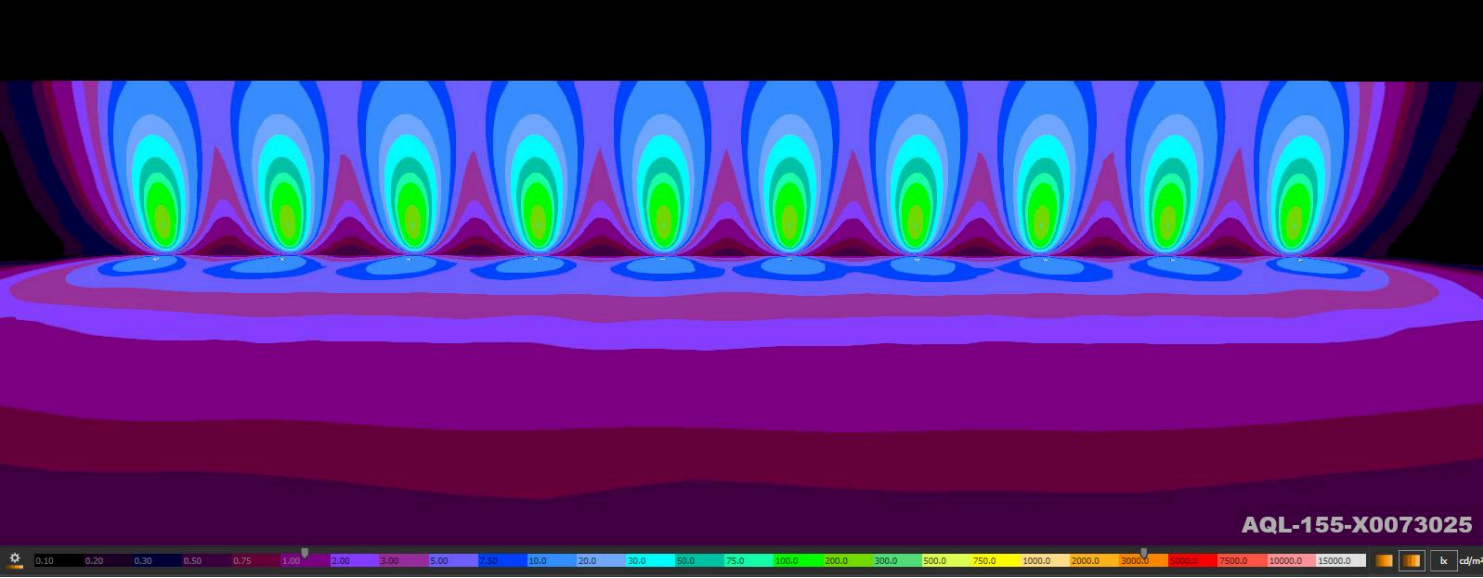
# 200mm Fixed Offset - 7W

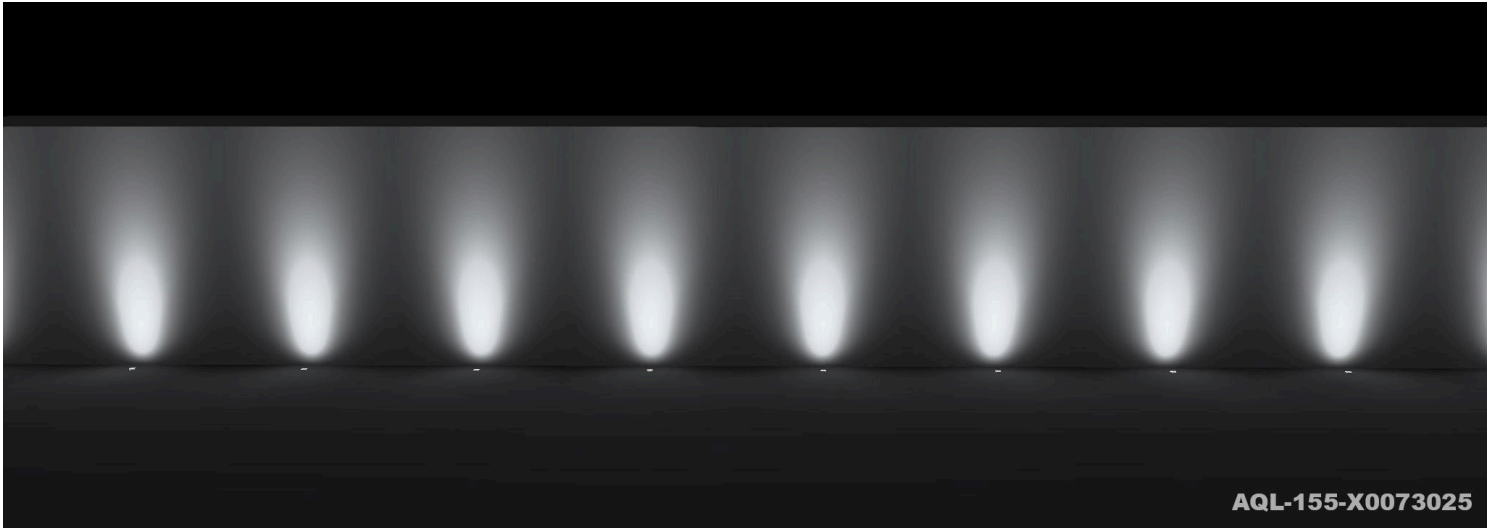
AQL-155 / 7W / 10° Optic / ISOLUX



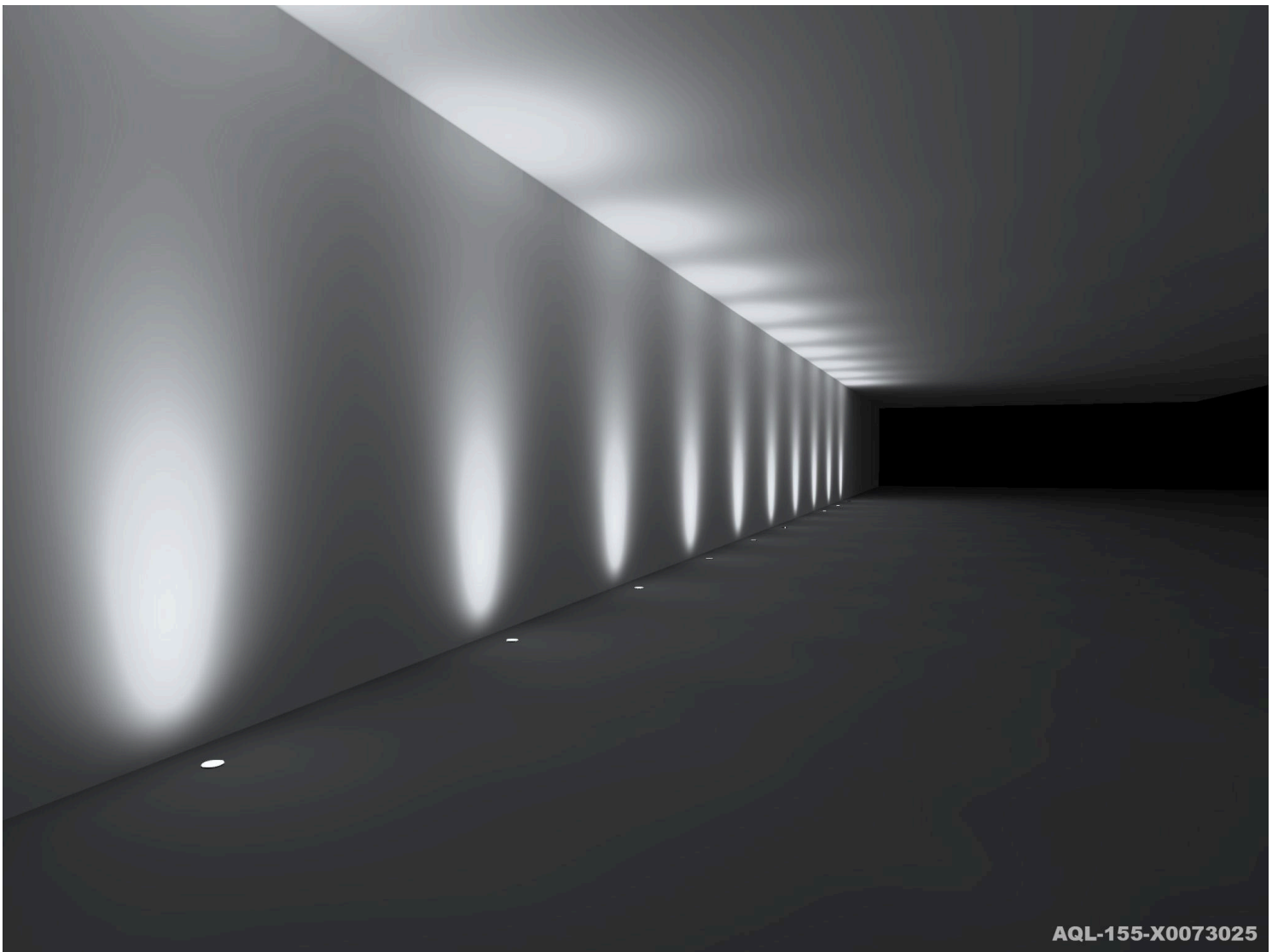




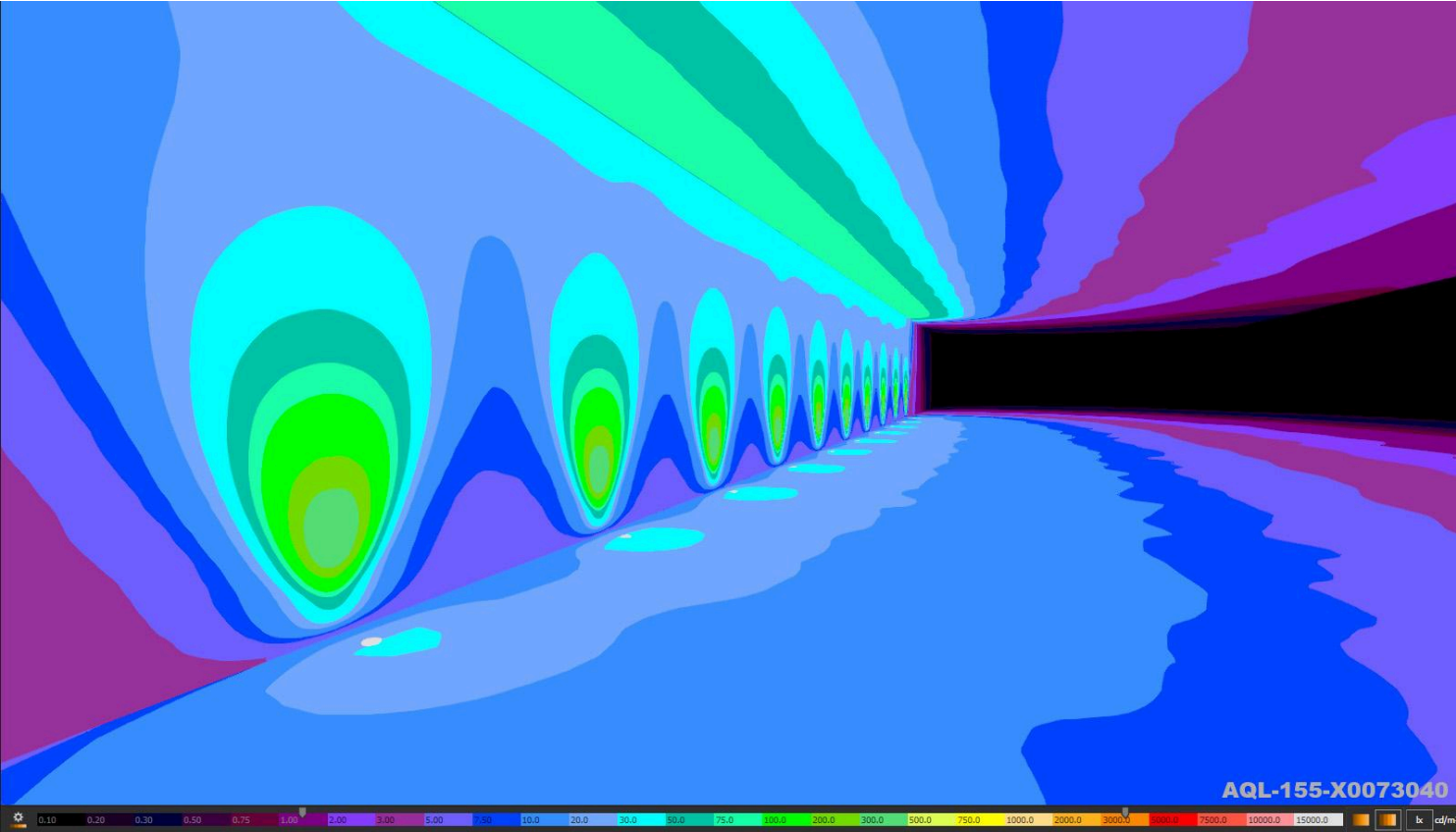
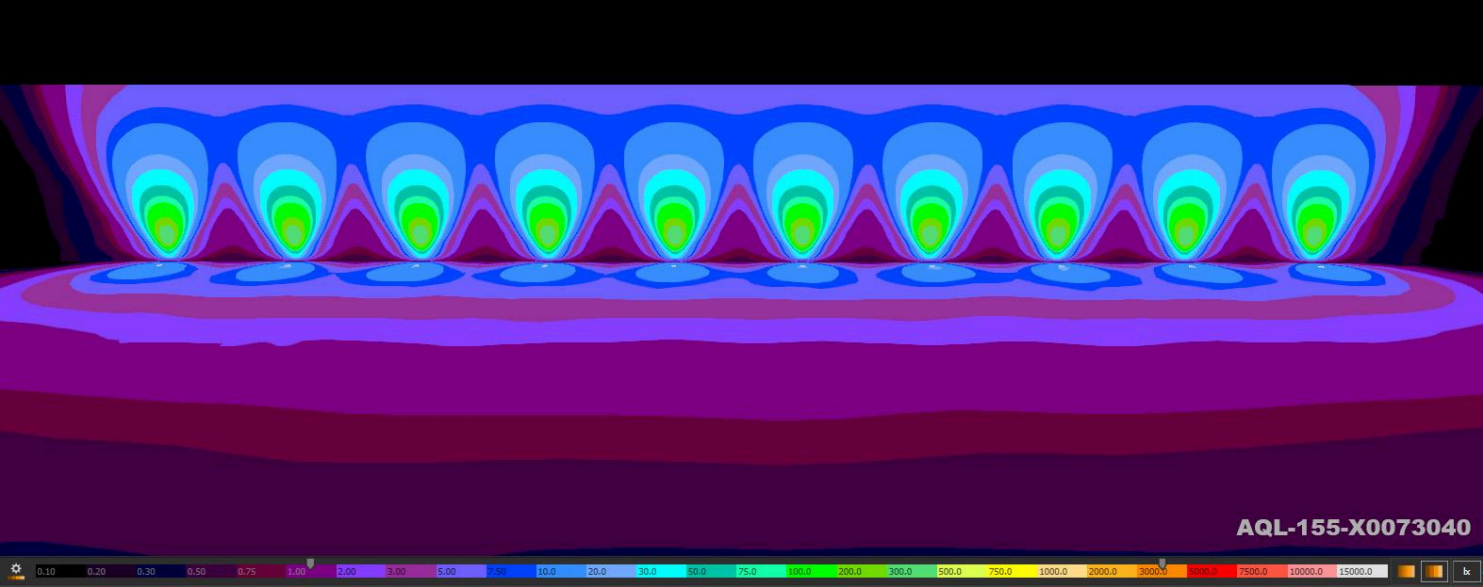


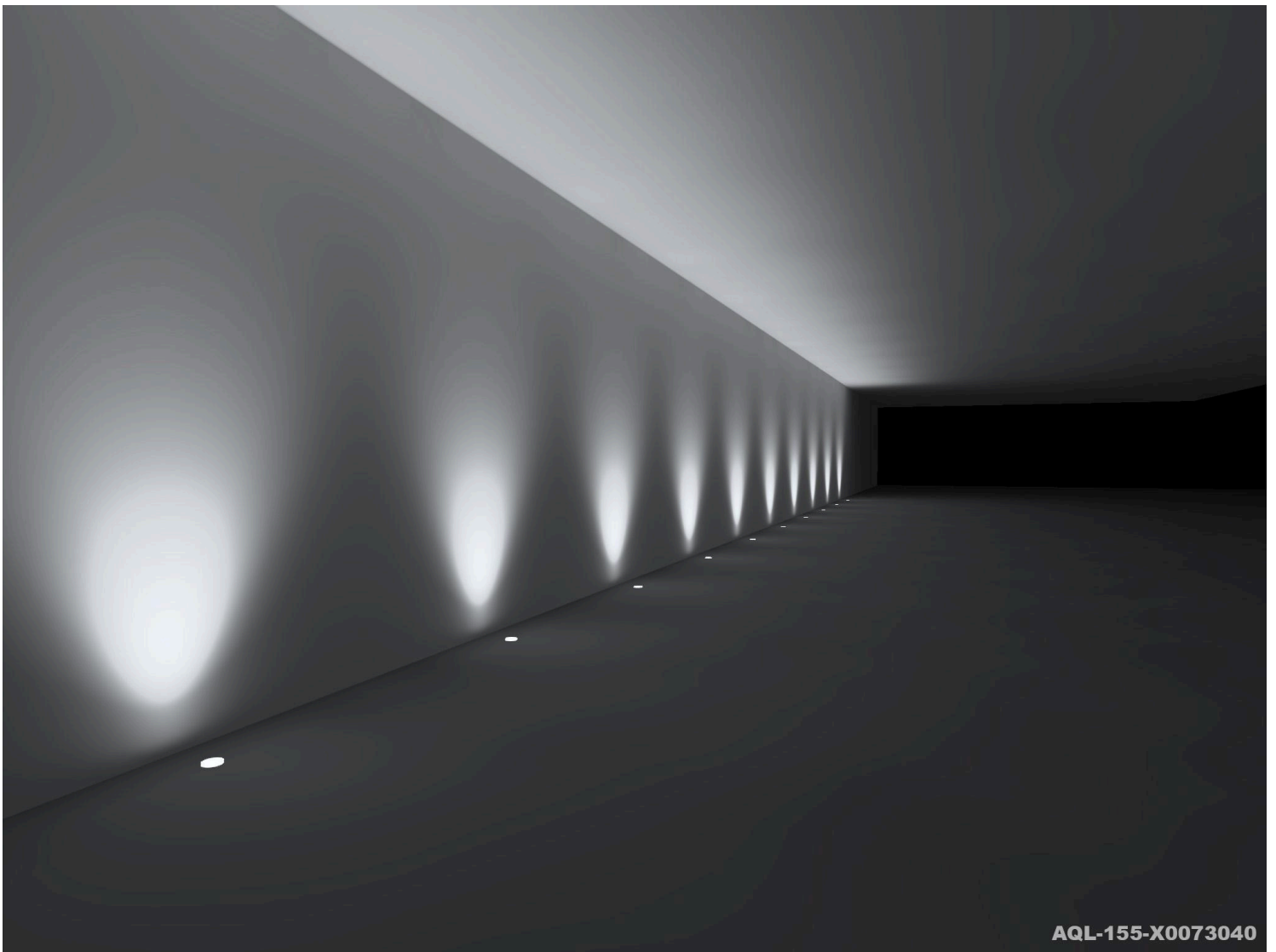
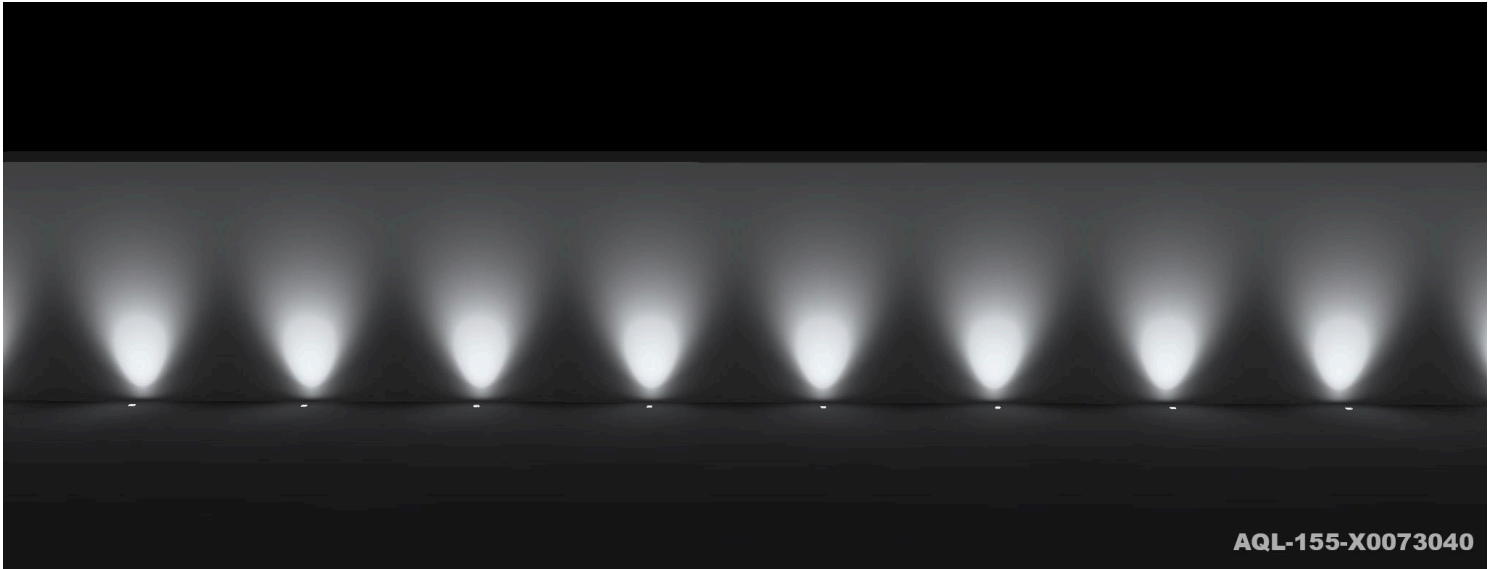


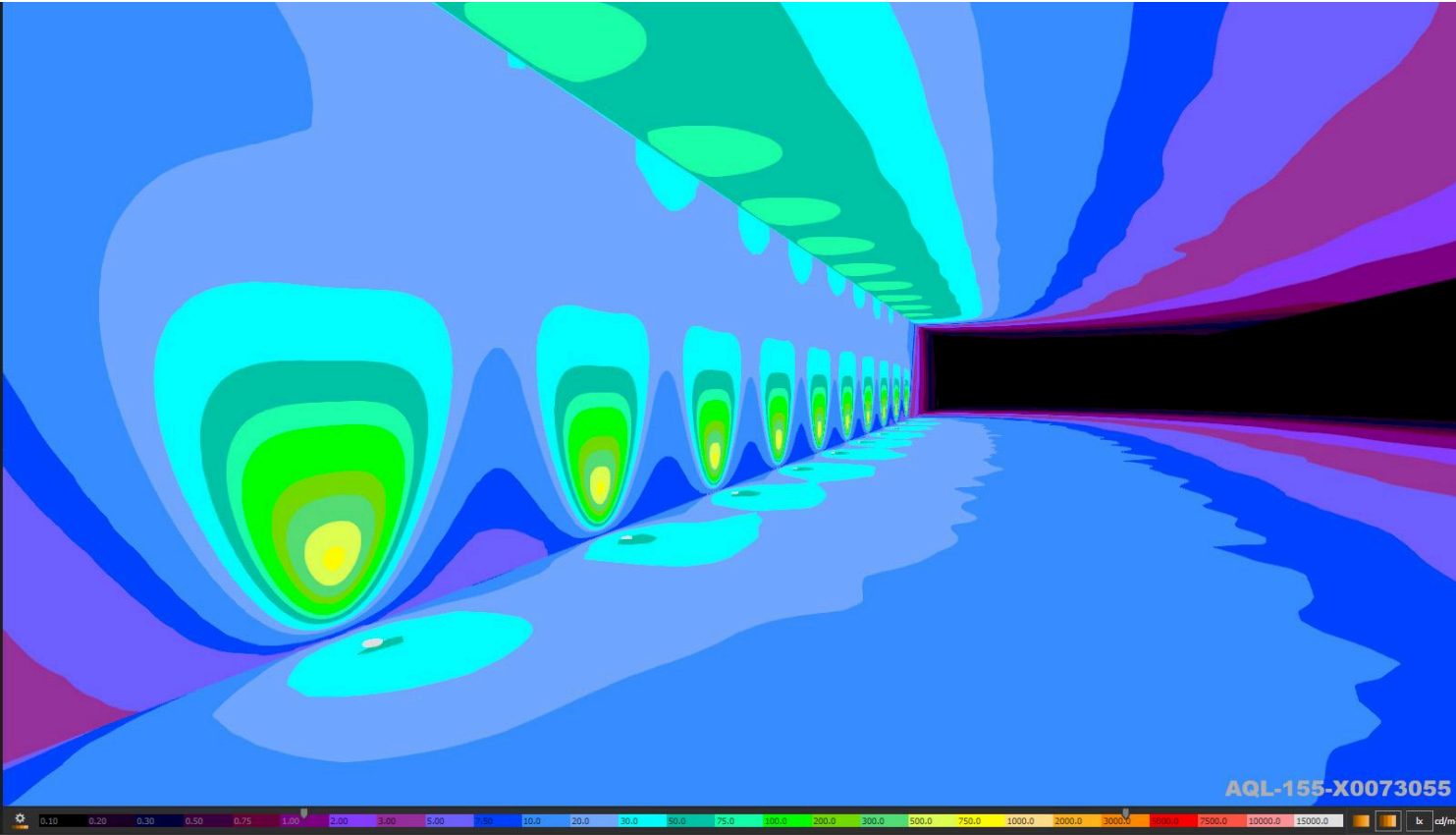
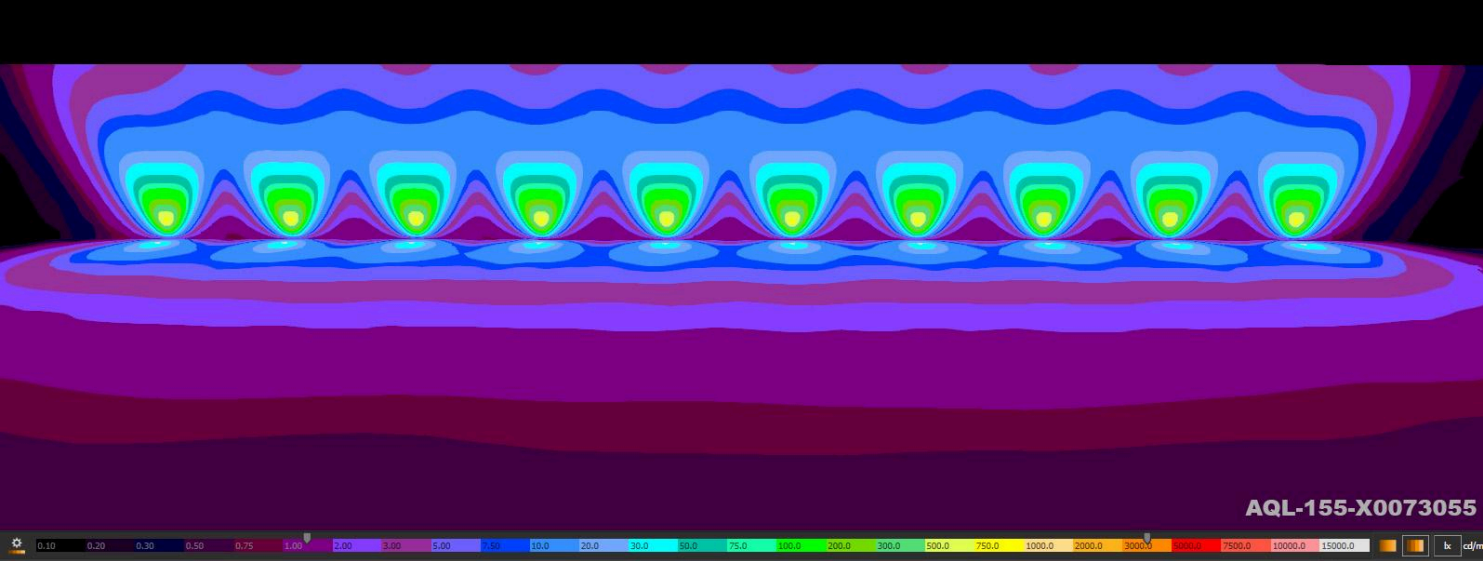
AQL-155-X0073025

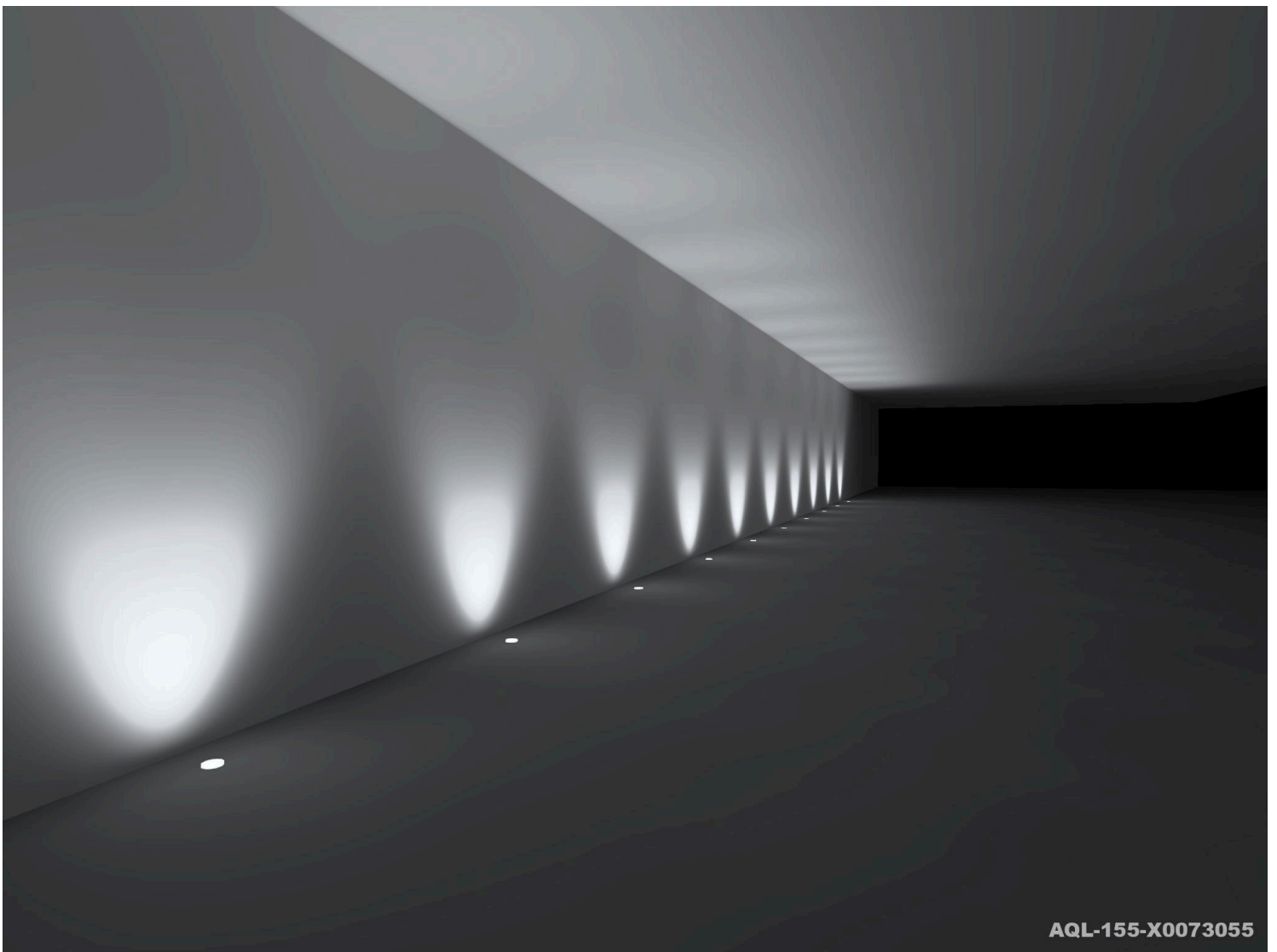
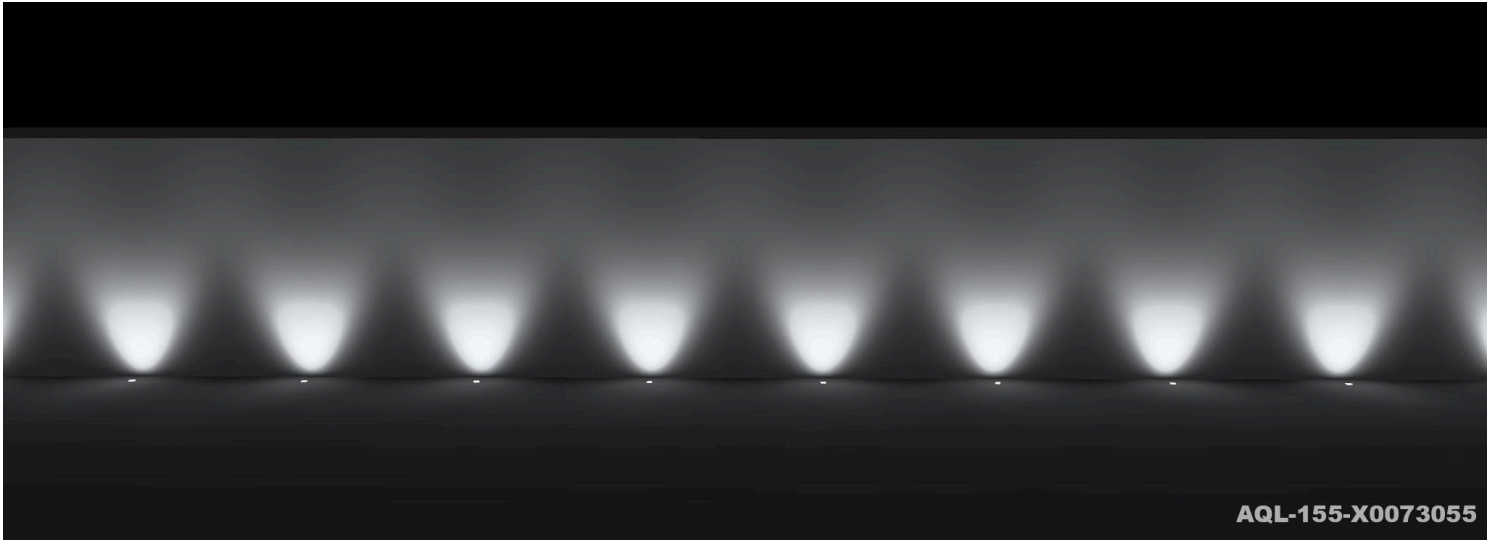


AQL-155-X0073025



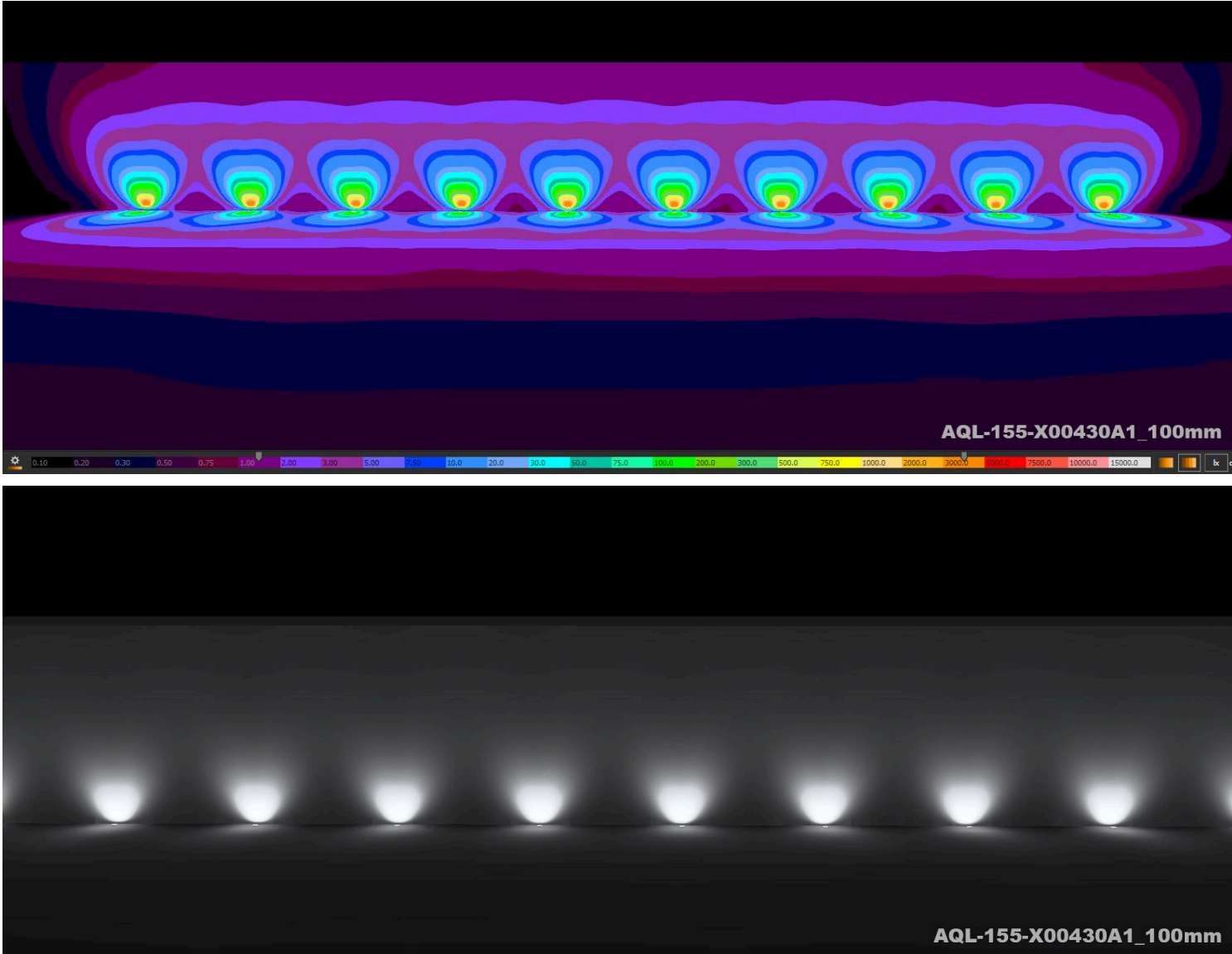




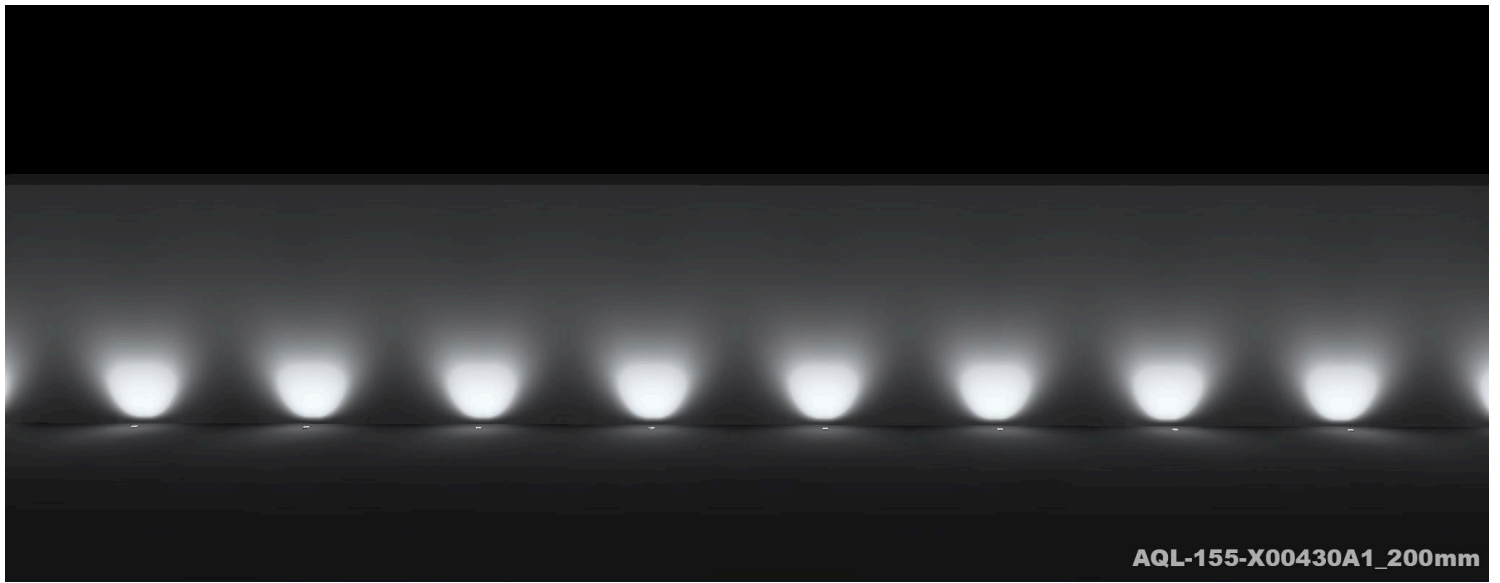
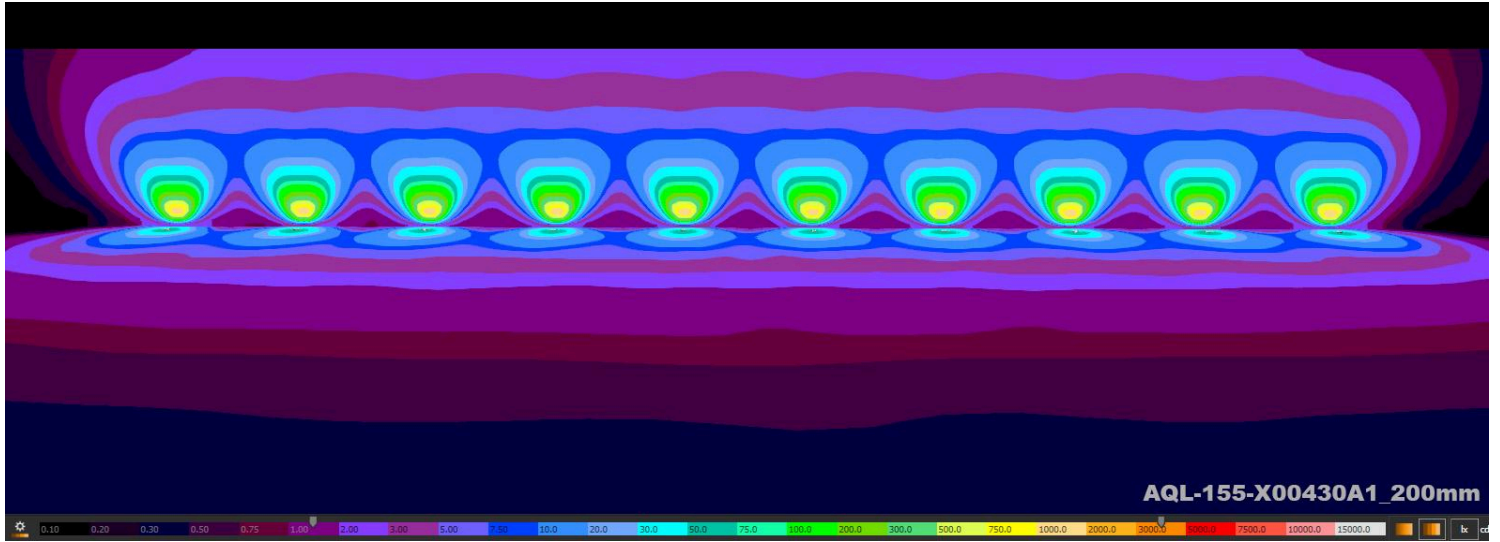


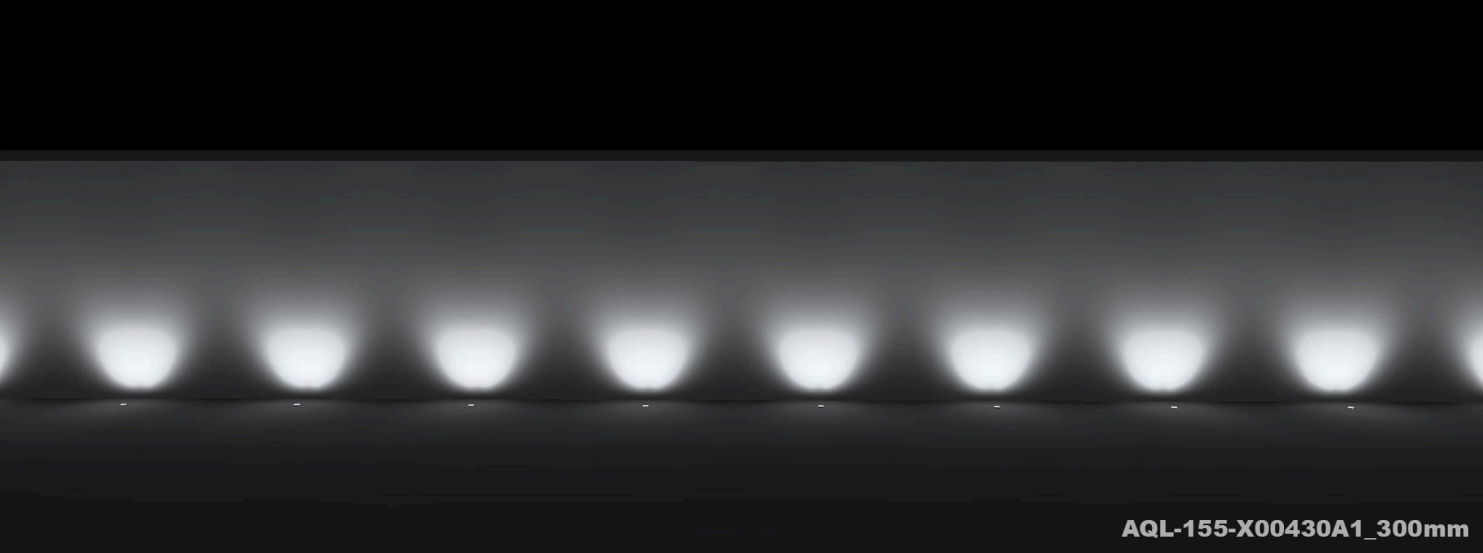
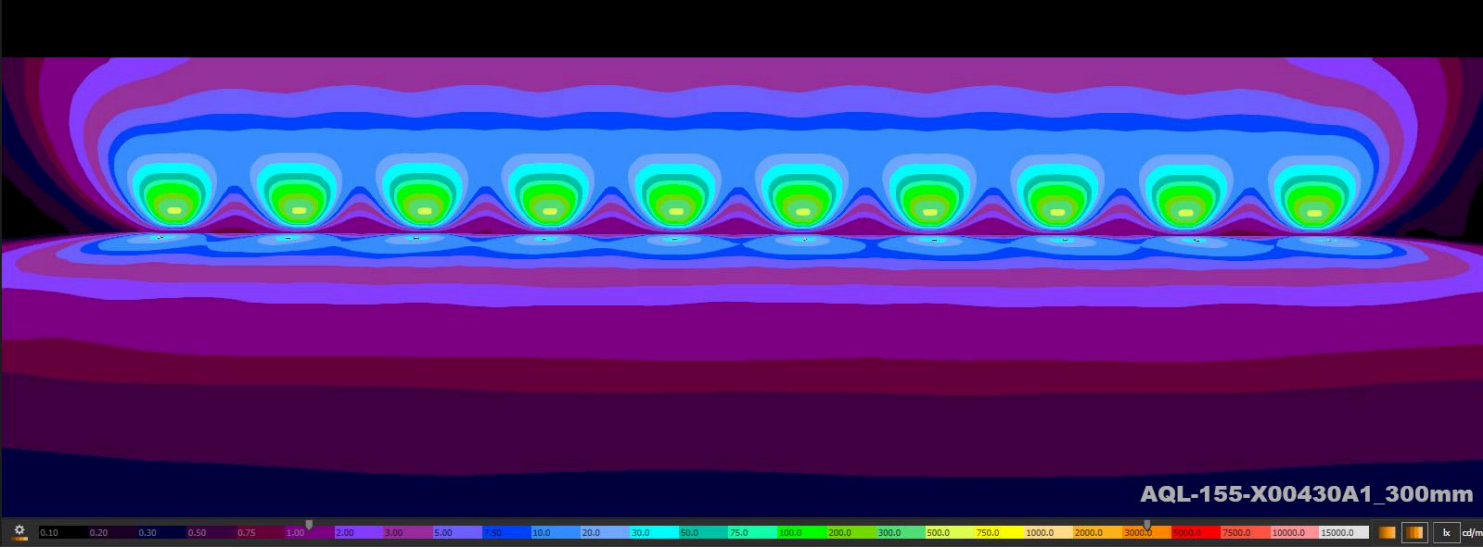
# Fixed Offsets - 4W - Asymmetric

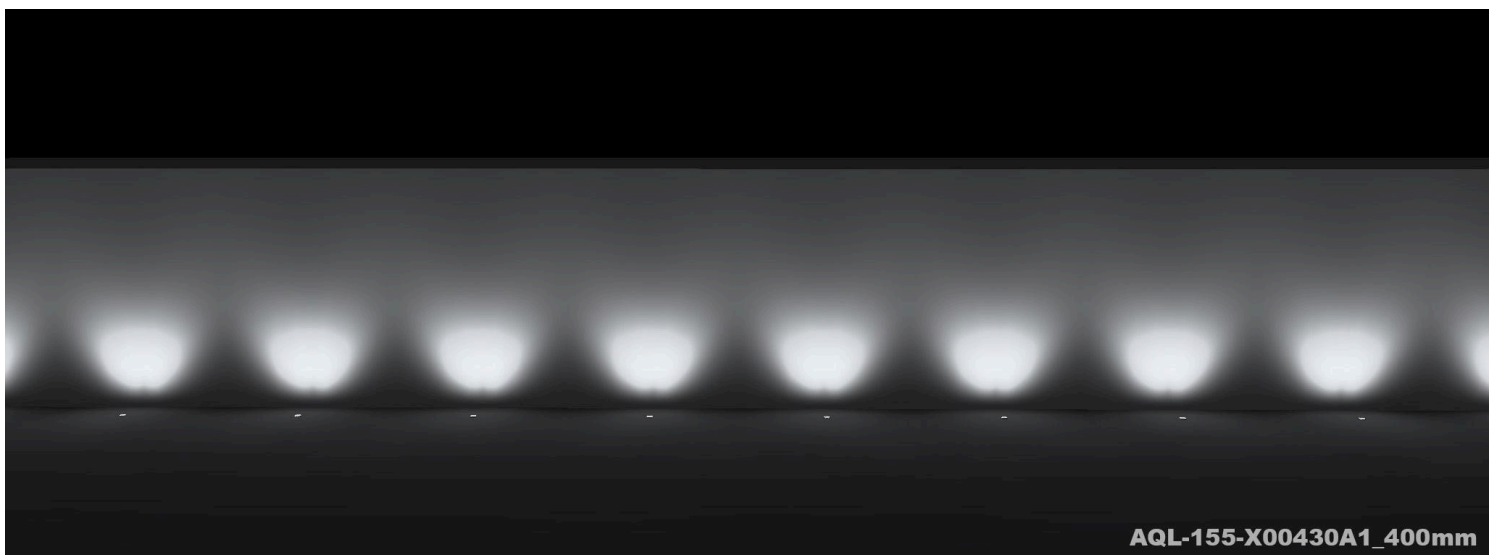
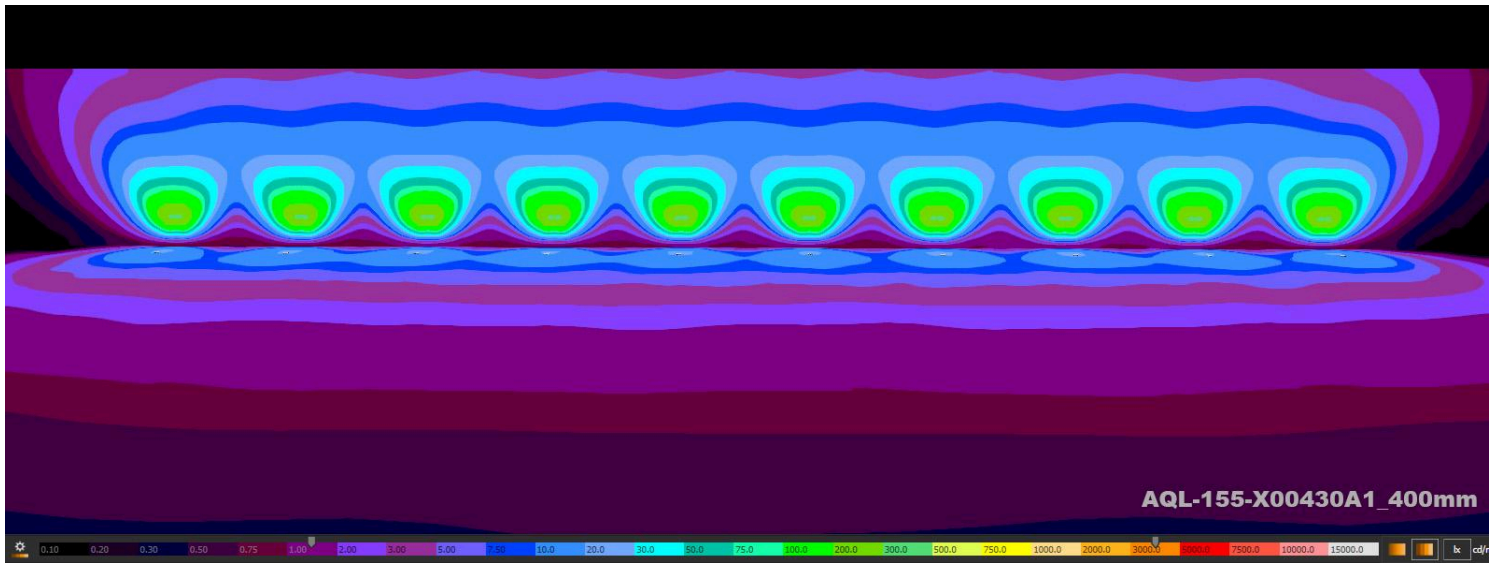
AQL-155 / 4W / Asymmetric (Wall Wash) Optic / 100mm Offset

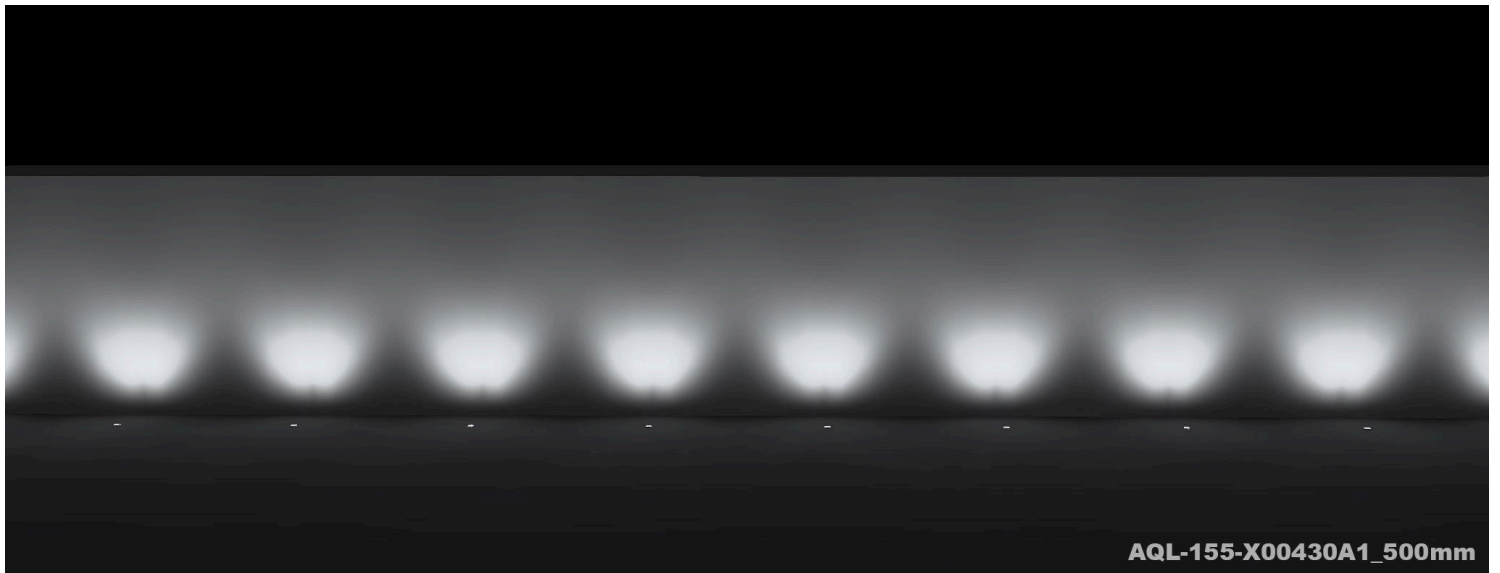
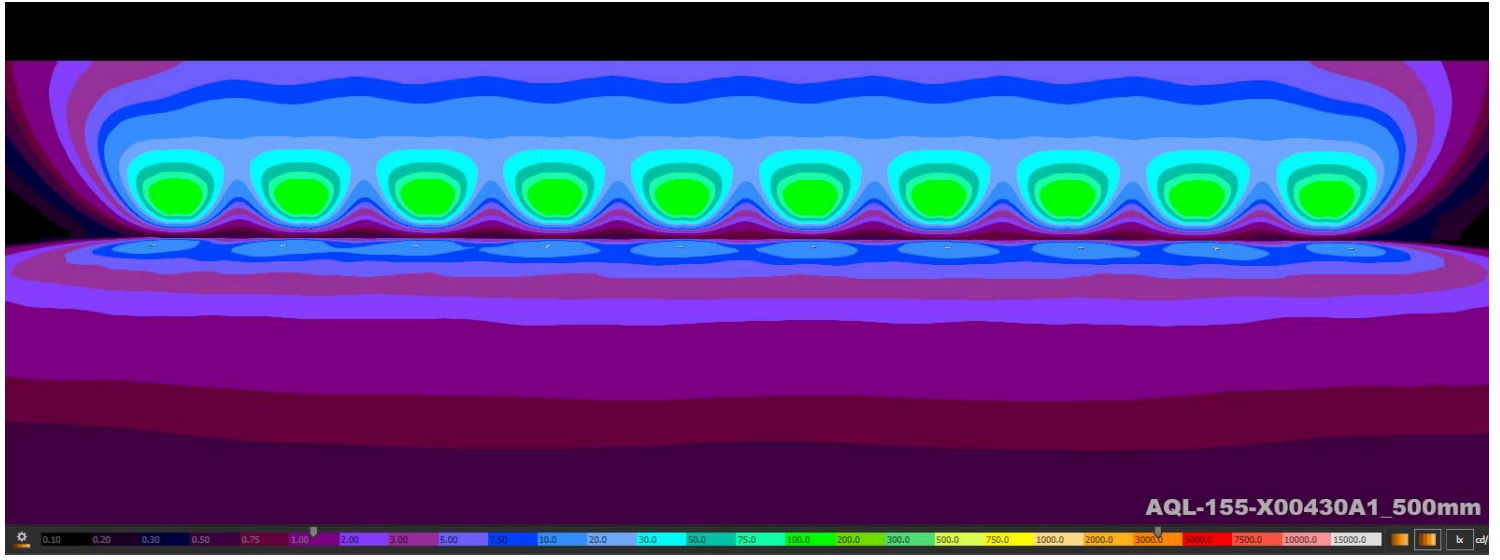


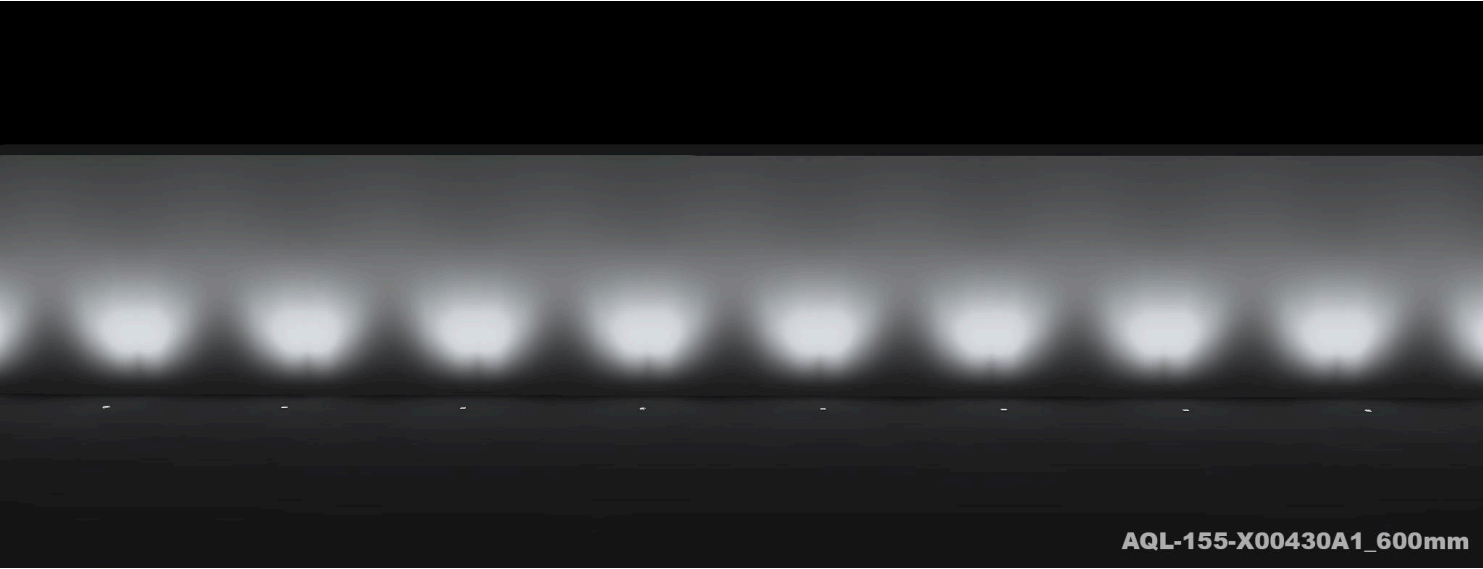
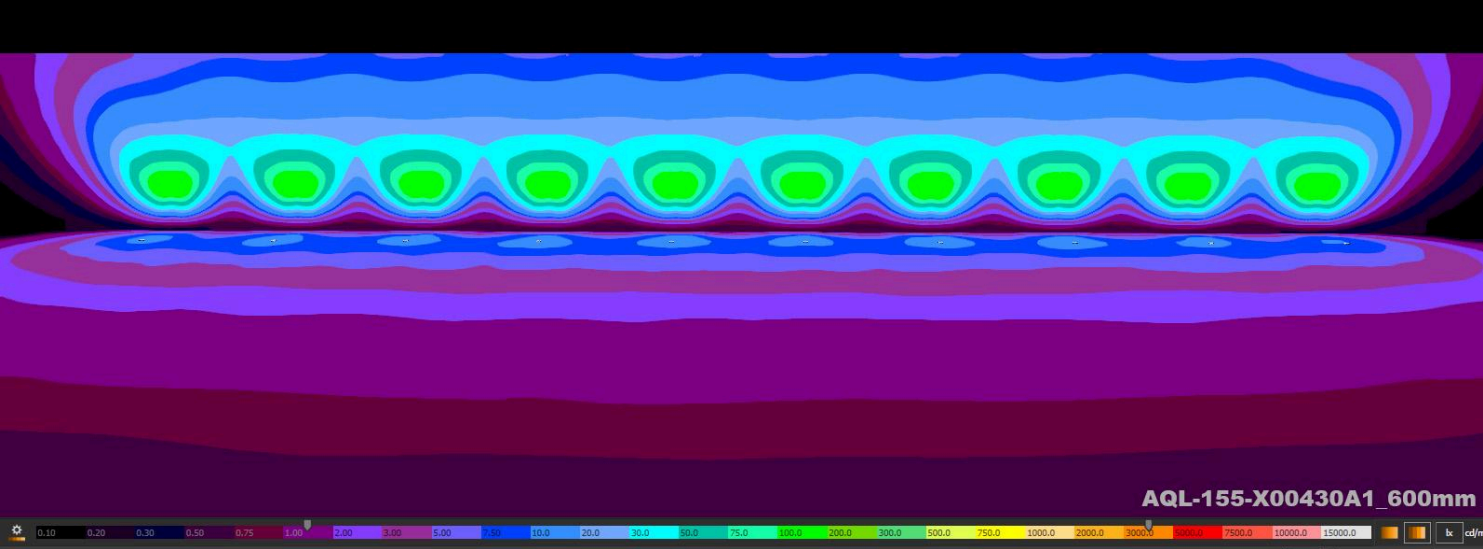












AQL-155 / 4W / Asymmetric (Wall Wash) Optic / 700mm Offset

