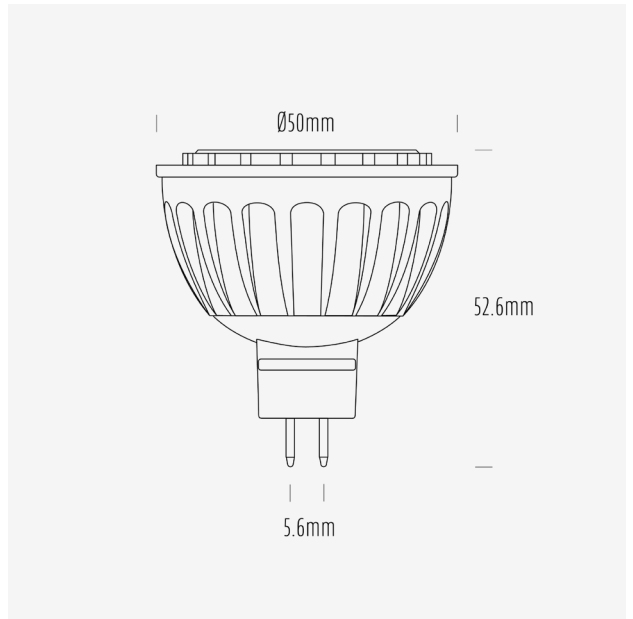


AGL 300 Series

MR16 LED Globes



AGL-300-55X40 / 5500K / MR16 / 40°



Product Data

Product Code	AGL-300-55X40			
Description	Aqualux 300 Series LED Lamp			
Type	MR16 GU5.6			
Construction	Aluminium Heatsink + PMMA Optic			
Warranty	3 Years			

Electrical Data

Input Voltage Range	12~24V AC/DC			
Nominal Voltage	24VDC			
Nominal Power	3W			
Nominal Current	125mA			
Input Voltage	12VDC	12VAC	24VDC	24VAC
Rated Power	3.5	2.8	3.5	3.6
Operating Frequency	-	50Hz	-	50Hz

Max. no. of lamps on AQD24-040	9	-	9	-
Max. no. of lamps on AQD24-100	>22	-	>22	-
Max. no. of lamps on AQD24-240	-	-	-	-

Dimming Compatibility	Non dimming
Wiring Scheme	Parallel
Startup Time	< 0.5s

Mechanical & Thermal Data

Overall Length	52.6mm
Max Diameter	50mm
Lamp Base	GU5.6
Weight	55g
Operating Temp Range	-20° - 45°
IP Rating	IP20

Photometric Data

Nominal Flux (lm)	300			
Input Voltage	12VDC	12VAC	24VDC	24VAC
Input Power (W)	3.5	2.8	3.5	3.6
Rated Flux (lm)	361	292	376	373
Efficacy (lm/W)	104	103	109	105

CCT	5500K
CCT Description	Cool White
CRI (Ra)	84
CRI (R9)	6
TM-30 (Rf)	83
TM-30 (Rg)	95
SDCM	-
Peak Intensity (cd)	508
Nominal Beam Angle	40°
Measured Beam Angle (FWHM)	42°

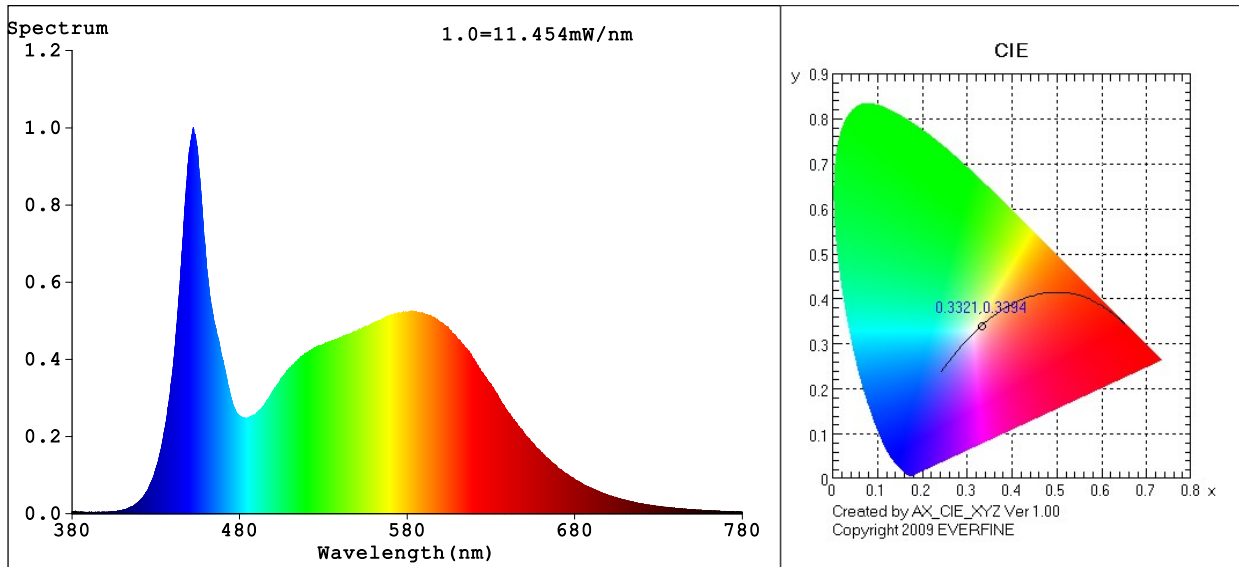
Lifespan Data

L70	15,000h
Switching Cycles	15,000

Compliance Data

EMI	Yes
RCM	N/A
Mercury Content	0mg

Spectrum Test Report



Color Parameters:

Chromaticity Coordinate: $x=0.3321$ $y=0.3394$ / $u'=0.2073$ $v'=0.4767$
 CCT=5514K (Duv=-0.0007) Dominant WL:Ld =543.0nm WL:Lc = --nm Purity=1.5%
 Ratio:R=15.0% G=79.7% B=5.2%; Peak WL:Lp=452.4nm FWHM=22.3nm
 Render Index:Ra=83.7 AvgR=77.0 TM30:Rf=83 Rg=95

R1 =82 R2 =90 R3 =93 R4 =83 R5 =83 R6 =85 R7 =86
 R8 =67 R9 =6 R10=76 R11=82 R12=62 R13=85 R14=97 R15=78

Photo Parameters:

Flux = 372.9 lm Eff. : 105.02 lm/W Fe = 1.178 W

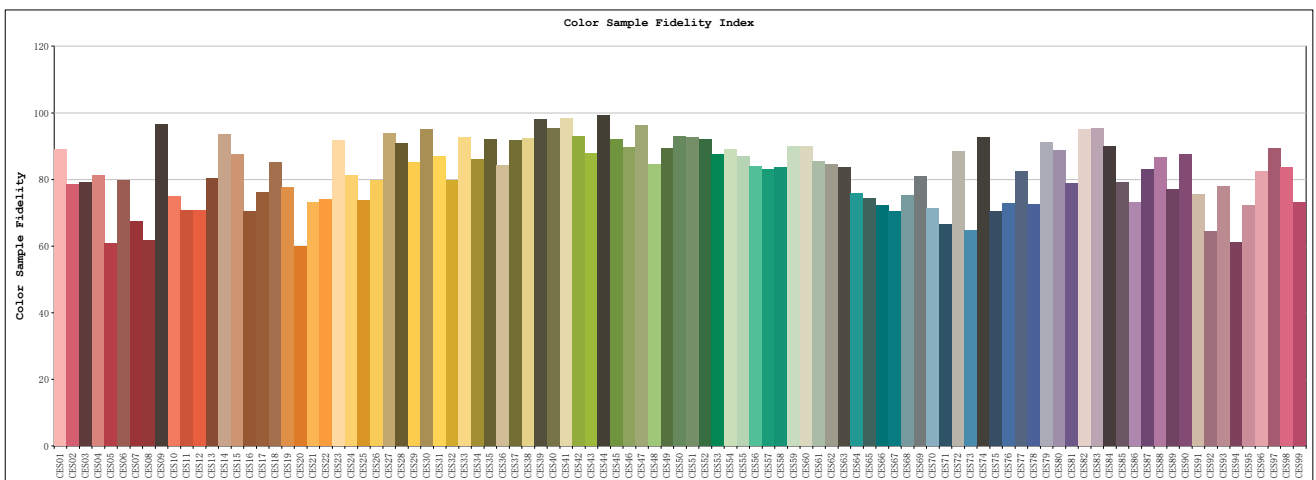
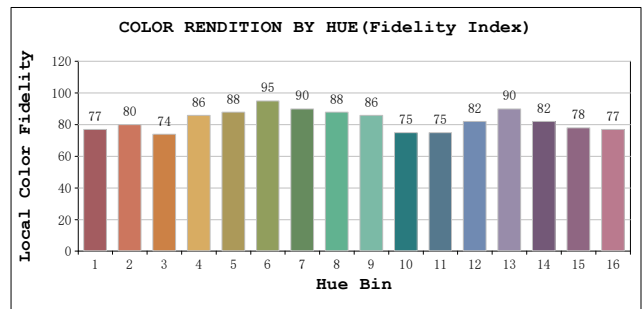
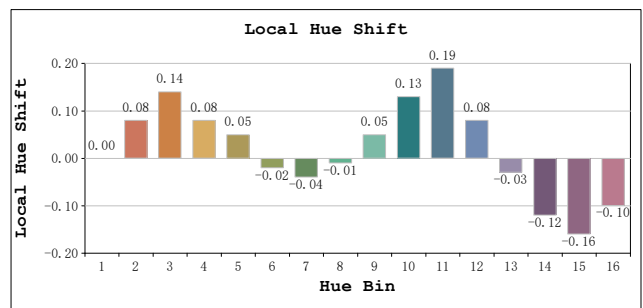
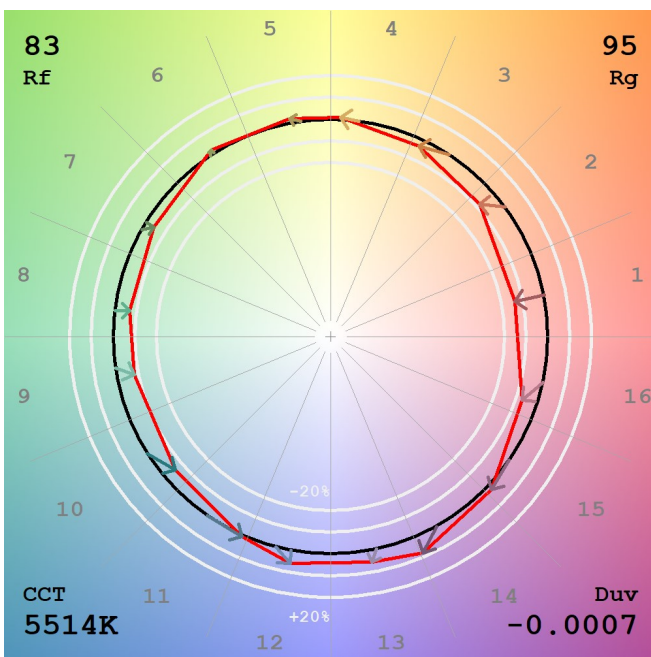
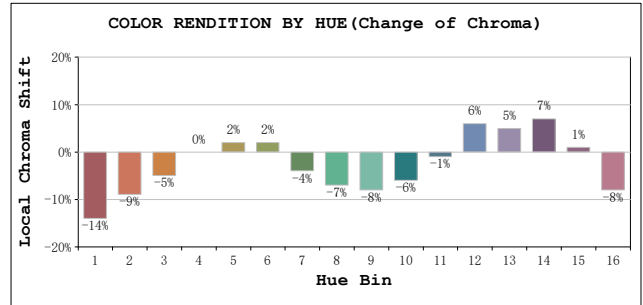
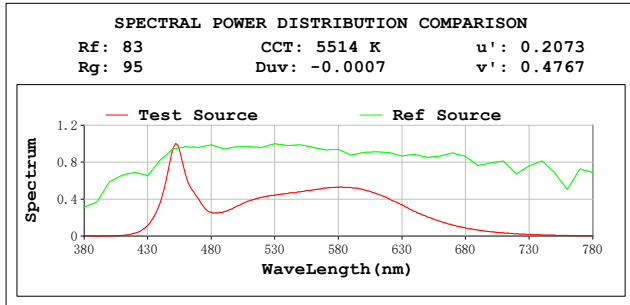
Electrical parameters:

V = 23.975 V I = 0.2420 A P = 3.550 W PF = 0.6121
 LEVEL:OUT WHITE:ANSI_5700K
 Status: Integral T = 221 ms Ip = 41424 (63%)

GBT5702

TM30

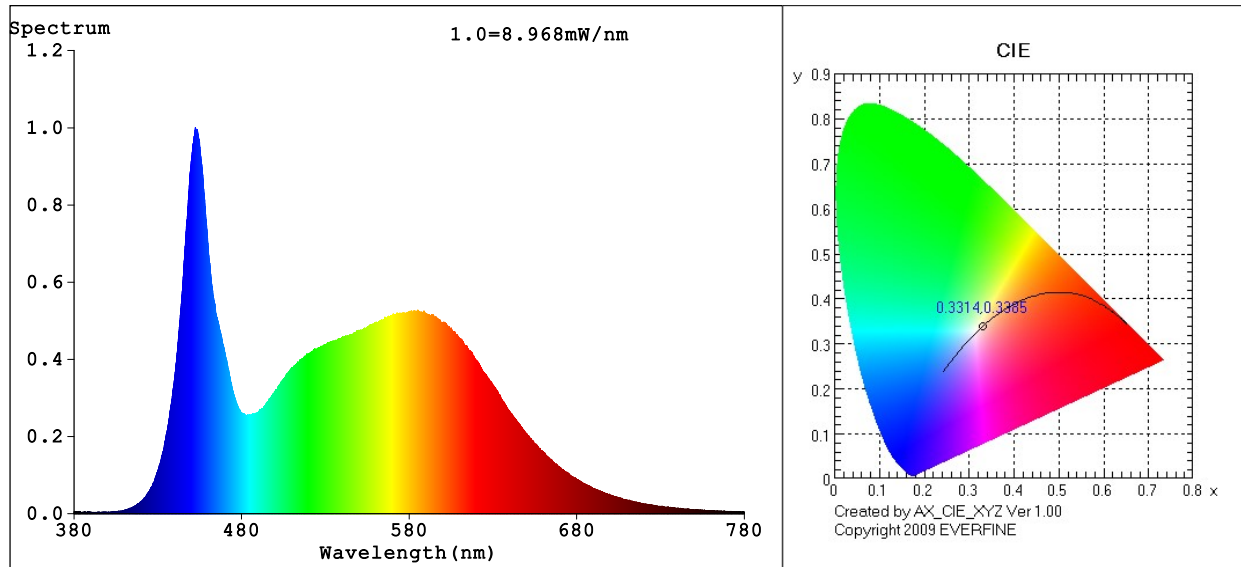
View Angle:2 Deg



Model:AGL-300-55X40
 Tester:EC
 Temperature:25.3Deg
 Manufacturer:AQUALUX

Number:AGL-300-55X40
 Date:2023-11-14 10:13:36
 Humidity:65.0%
 Remarks:24V AC

Spectrum Test Report



Color Parameters:

Chromaticity Coordinate: $x=0.3314$ $y=0.3385$ / $u'=0.2072$ $v'=0.4761$
 CCT=5545K (Duv=-0.0009) Dominant WL:Ld =530.0nm WL:Lc = --nm Purity=1.1%
 Ratio:R=15.0% G=79.6% B=5.4%; Peak WL:Lp=452.4nm FWHM=22.9nm
 Render Index:Ra=83.9 AvgR=77.3 TM30:Rf=83 Rg=95

R1 =83 R2 =91 R3 =94 R4 =83 R5 =83 R6 =85 R7 =86
 R8 =67 R9 =7 R10=77 R11=82 R12=62 R13=85 R14=97 R15=78

Photo Parameters:

Flux = 292.3 lm Eff. : 102.70 lm/W Fe = 926.4 mW

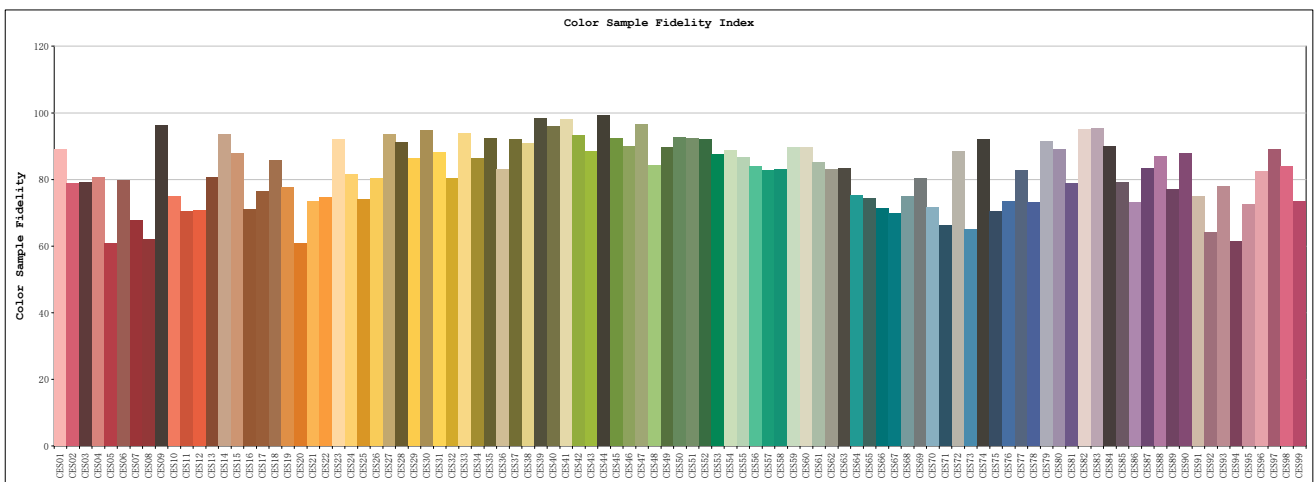
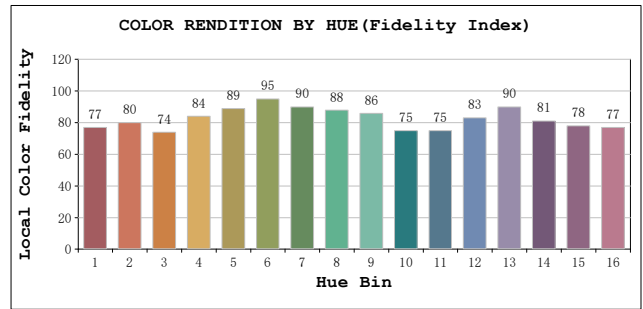
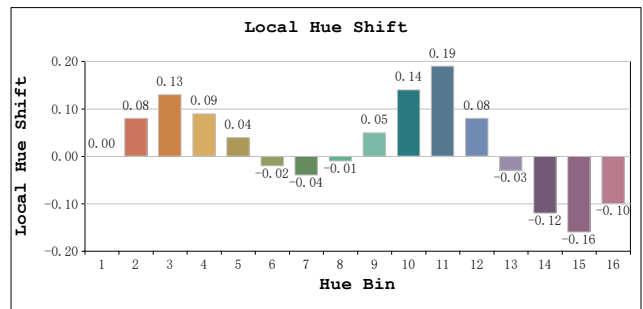
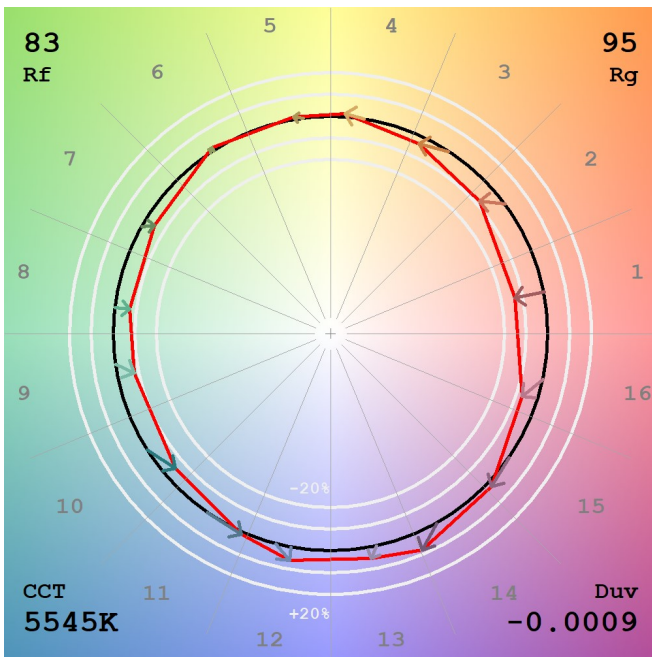
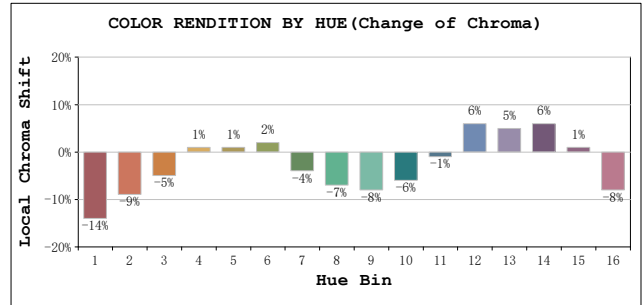
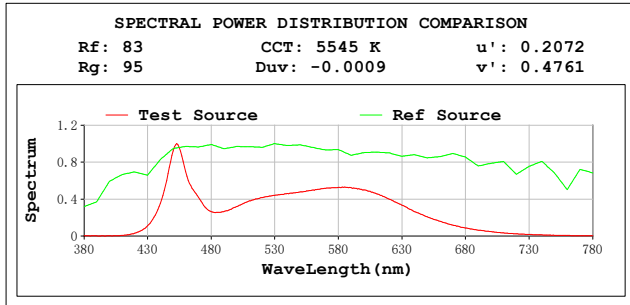
Electrical parameters:

V = 11.988 V I = 0.3376 A P = 2.847 W PF = 0.7034
 LEVEL:OUT WHITE:ANSI_5700K
 Status: Integral T = 221 ms Ip = 32764 (50%)

GBT5702

TM30

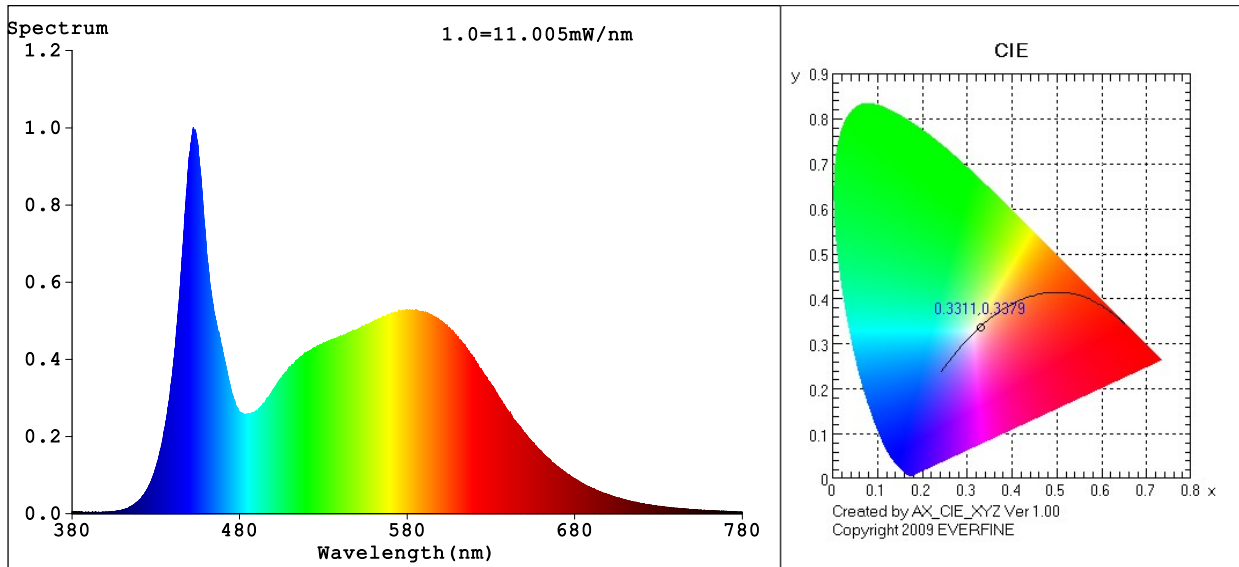
View Angle:2 Deg



Model:AGL-300-55X40
 Tester:EC
 Temperature:25.3Deg
 Manufacturer:AQUALUX

Number:AGL-300-55X40
 Date:2023-11-14 10:20:19
 Humidity:65.0%
 Remarks:12V AC

Spectrum Test Report



Color Parameters:

Chromaticity Coordinate: $x=0.3311$ $y=0.3379$ / $u'=0.2072$ $v'=0.4757$
 CCT=5558K (Duv=-0.0011) Dominant WL:Ld =522.5nm WL:Lc = --nm Purity=0.9%
 Ratio:R=15.0% G=79.6% B=5.4%; Peak WL:Lp=452.4nm FWHM=23.2nm
 Render Index:Ra=84.0 AvgR=77.5 TM30:Rf=83 Rg=95

R1 =83 R2 =91 R3 =94 R4 =83 R5 =84 R6 =85 R7 =86
 R8 =67 R9 =8 R10=77 R11=82 R12=63 R13=86 R14=97 R15=78

Photo Parameters:

Flux = 361.3 lm Eff. : 103.67 lm/W Fe = 1.147 W

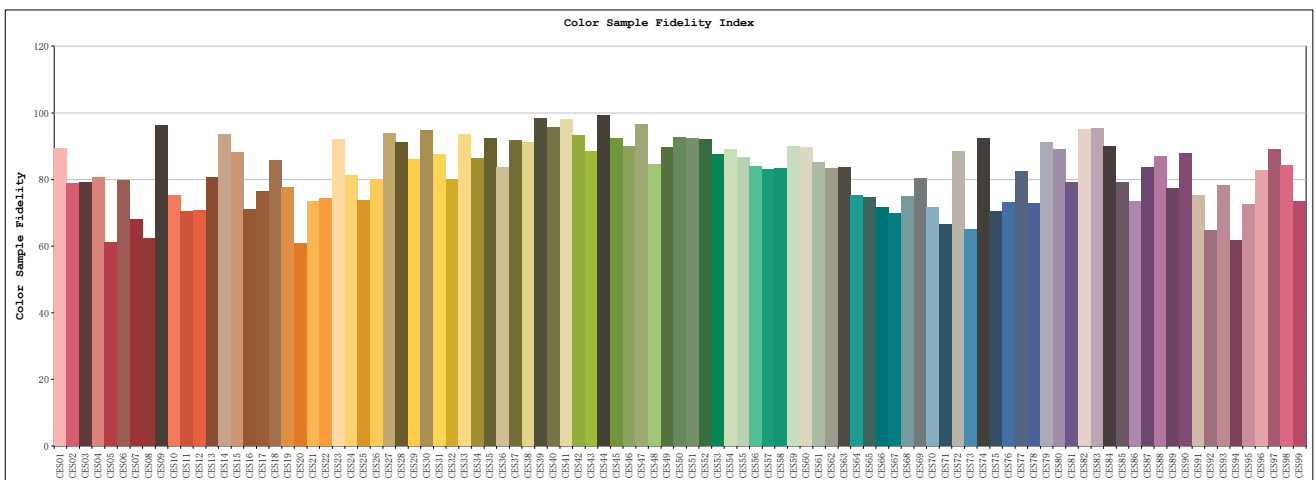
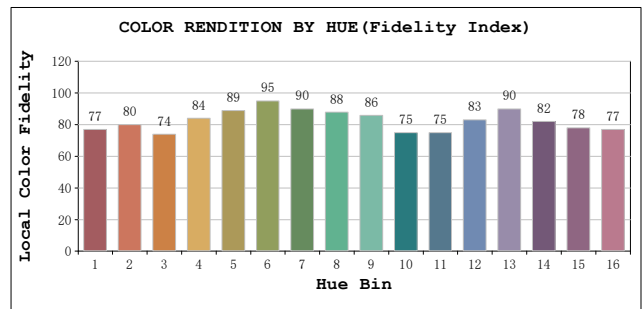
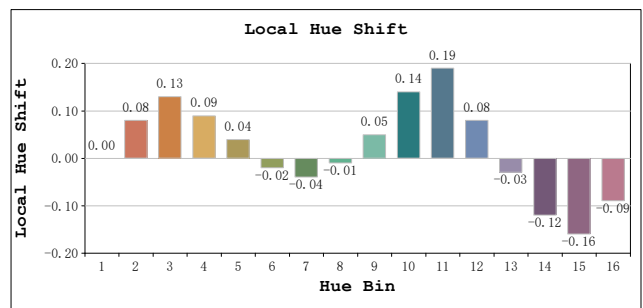
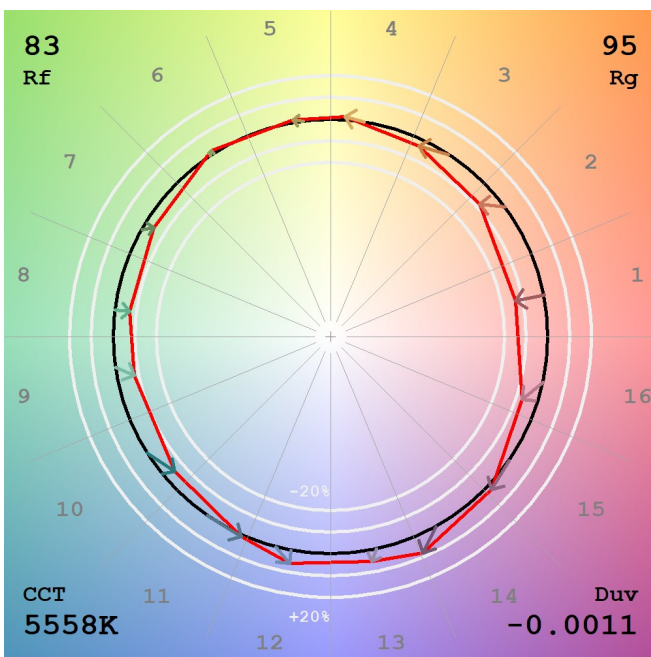
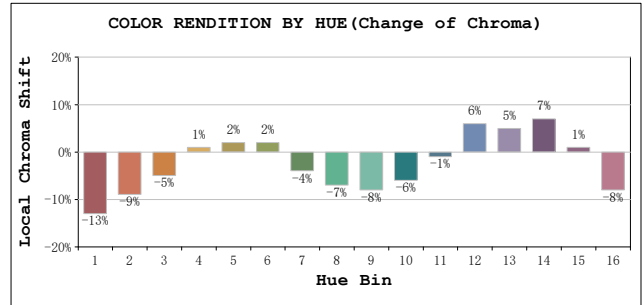
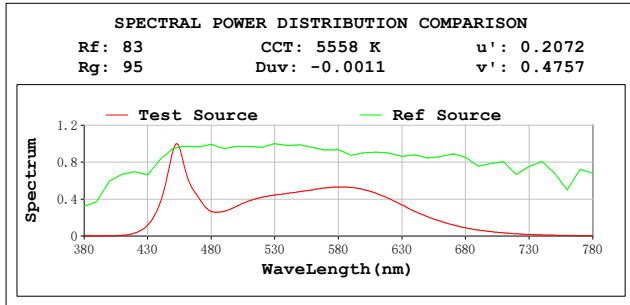
Electrical parameters:

V = 11.969 V I = 0.2912 A P = 3.485 W PF = 1.000
 LEVEL:OUT WHITE:ANSI_5700K
 Status: Integral T = 221 ms Ip = 40207 (61%)

GBT5702

TM30

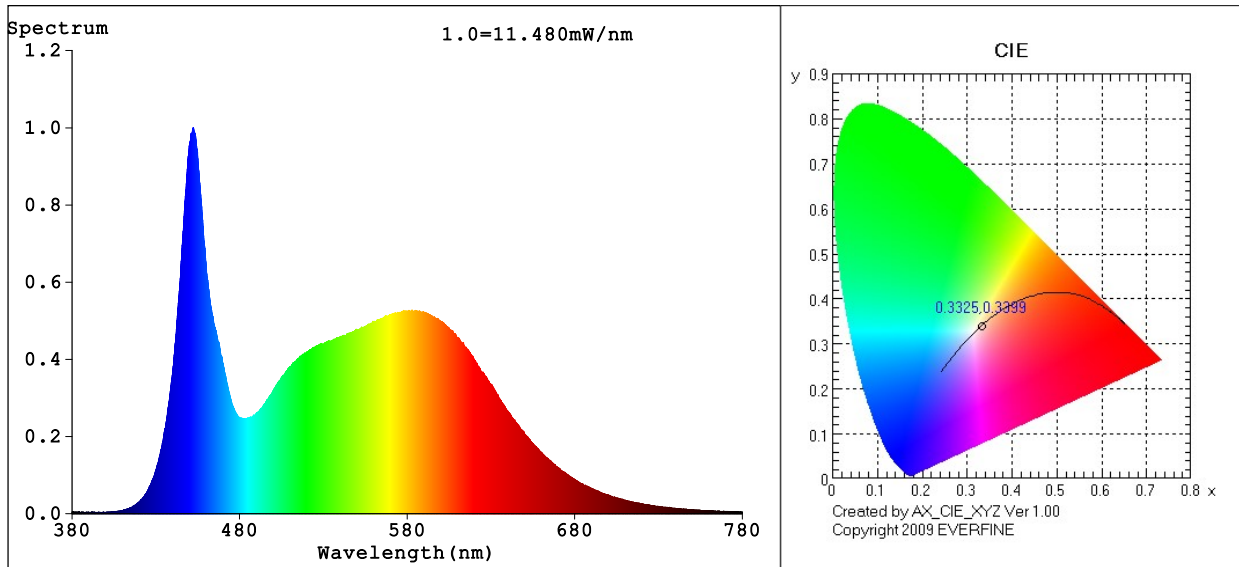
View Angle:2 Deg



Model:AGL-300-55X40
 Tester:EC
 Temperature:25.3Deg
 Manufacturer:AQUALUX

Number:AGL-300-55X40
 Date:2023-11-14 10:22:18
 Humidity:65.0%
 Remarks:12V DC

Spectrum Test Report



Color Parameters:

Chromaticity Coordinate: $x=0.3325$ $y=0.3399$ / $u'=0.2074$ $v'=0.4770$
 CCT=5496K (Duv=-0.0006) Dominant WL:Ld =548.0nm WL:Lc = --nm Purity=1.8%
 Ratio:R=15.1% G=79.7% B=5.2%; Peak WL:Lp=452.4nm FWHM=21.9nm
 Render Index:Ra=83.6 AvgR=76.9 TM30:Rf=83 Rg=95

R1 =82 R2 =90 R3 =93 R4 =83 R5 =83 R6 =85 R7 =86
 R8 =67 R9 =6 R10=75 R11=82 R12=62 R13=85 R14=97 R15=78

Photo Parameters:

Flux = 375.7 lm Eff. : 108.69 lm/W Fe = 1.184 W

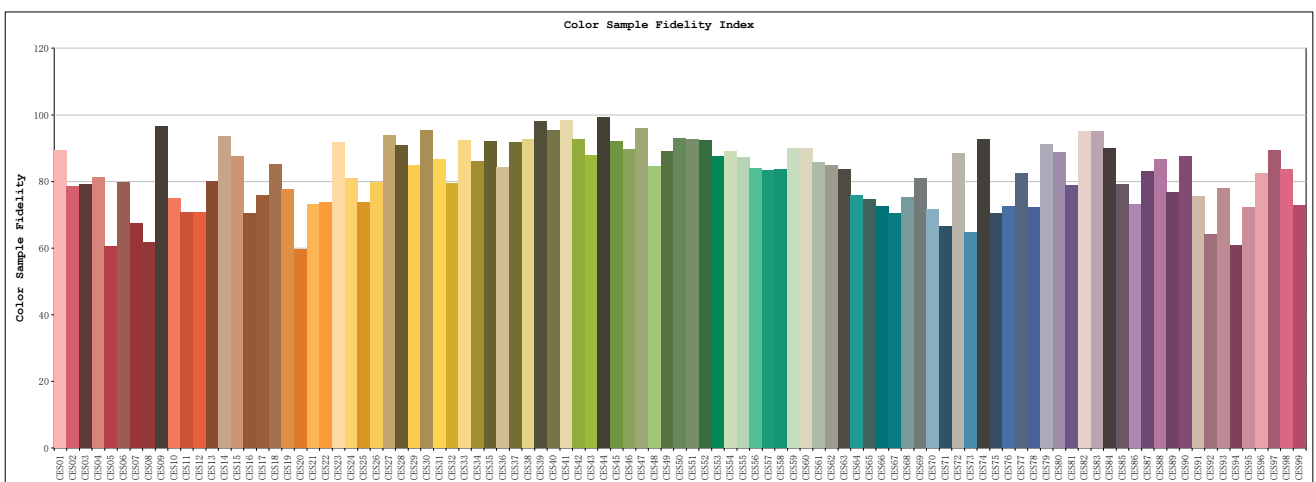
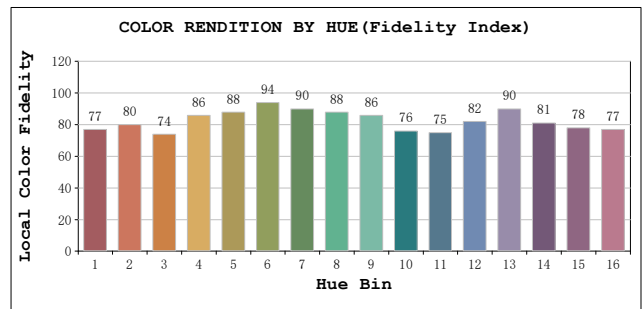
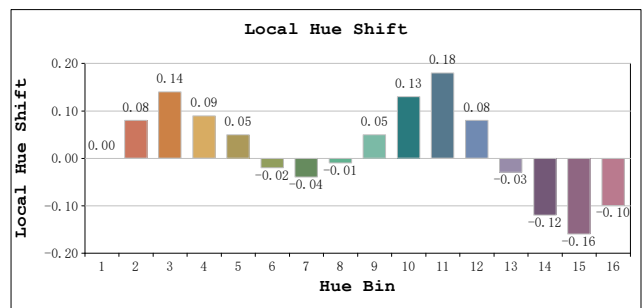
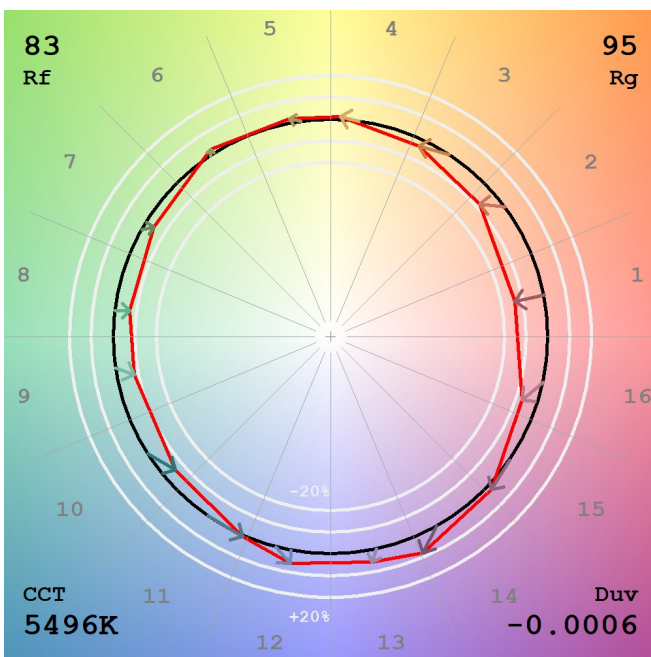
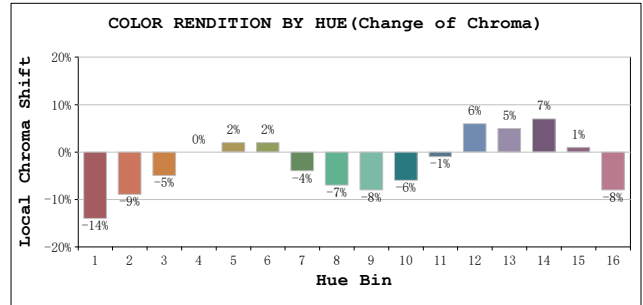
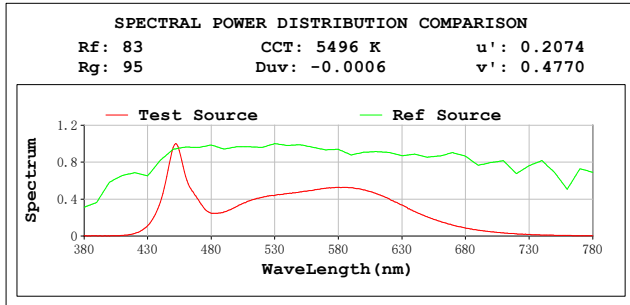
Electrical parameters:

V = 23.976 V I = 0.1442 A P = 3.456 W PF = 1.0000
 LEVEL:OUT WHITE:ANSI_5700K
 Status: Integral T = 232 ms Ip = 43787 (67%)

GBT5702

TM30

View Angle: 2 Deg



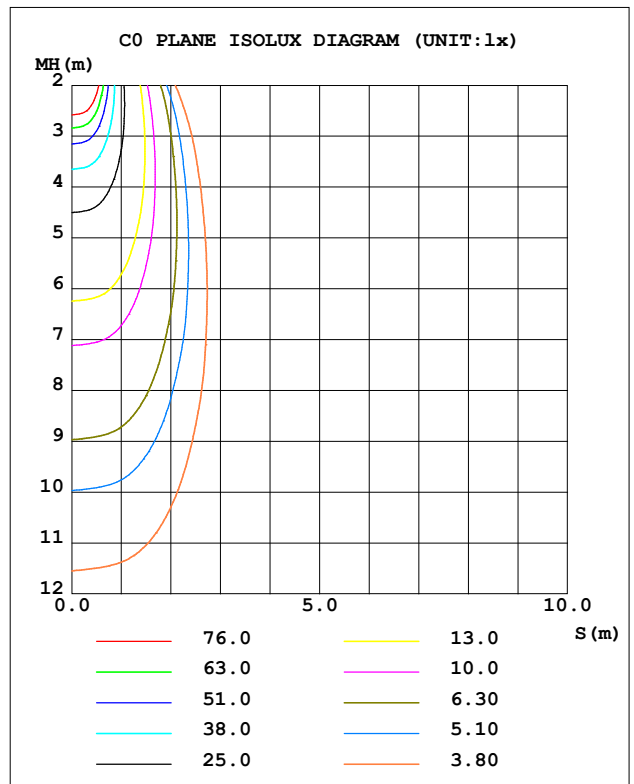
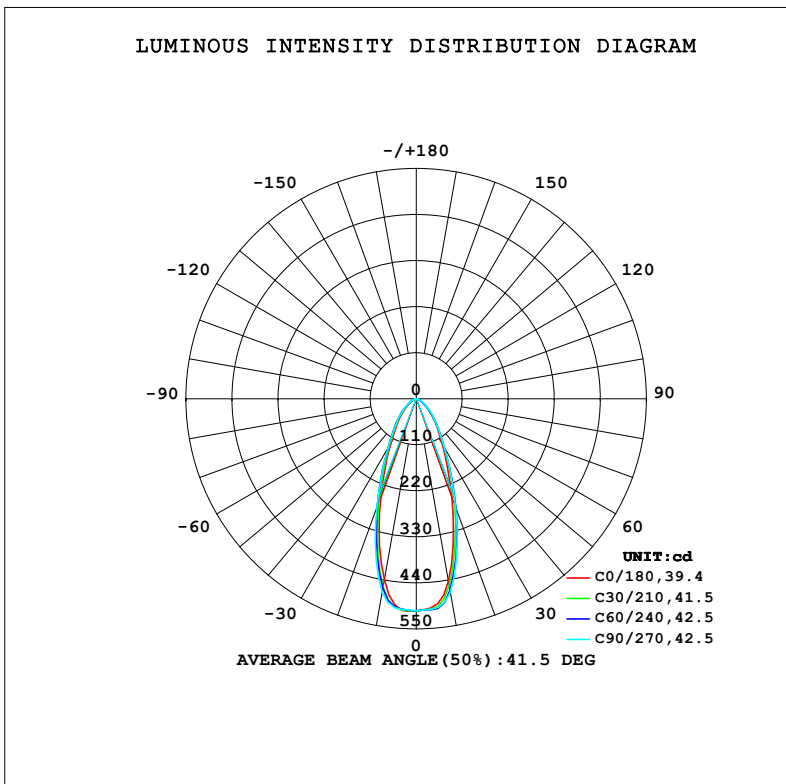
Model:AGL-300-55X40
 Tester:EC
 Temperature:25.3Deg
 Manufacturer:AQUALUX

Number:AGL-300-55X40
 Date:2023-11-10 16:55:33
 Humidity:65.0%
 Remarks:24V DC

LUMINAIRE PHOTOMETRIC TEST REPORT

Test:U:23.878V I:0.1389A P:3.3176W PF:1.0000 Freq:0Hz		
UTHDi:0.00% ITHDi:0.00% KDisp:0 Lamp Flux:371.825x1 lm		
NAME: AGL-300-55X40	TYPE: MR16 LAMP	WEIGHT:
SPEC.: AGL-300-55X40	DIM.:	SERIAL No.: -
MFR.: AQUALUX	SUR.:	Shielding Angle:

DATA OF LAMP		PHOTOMETRIC DATA				Eff: 112.08 lm/W
MODEL	LED	I _{max} (cd)	507.9	S/MH (C0/180)	0.64	
NOMINAL POWER (W)	3	LOR (%)	100.0	S/MH (C90/270)	0.68	
RATED VOLTAGE (V)	24	TOTAL FLUX (lm)	371.83	η UP, DN (C0-180)	0.0, 50.1	
NOMINAL FLUX (lm)	371.825	CIE CLASS	DIRECT	η UP, DN (C180-360)	0.0, 49.9	
LAMPS INSIDE	1	η up (%)	0.0	CIBSE SHR NOM	0.50	
TEST VOLTAGE (V)	24	η down (%)	100.0	CIBSE SHR MAX	0.70	



C Range: 0 - 180DEG
 C Interval: 15.0DEG
 Test Speed: MEDIUM
 Temperature: 20°C
 Operators: Elaine
 Test Date: 10 November 2023

γ Range: 0 - 90DEG
 γ Interval: 2.0DEG
 Test System: EVERFINE GO-SPEX500_V1 SYSTEM V2.00.473
 Humidity: 65.0%
 Test Distance: 3.100m [K=1.0000]
 Remarks: AGL-300-55X40
 3W / 5500K
 24V DC

ZONAL FLUX DIAGRAM

ZONAL FLUX DIAGRAM:

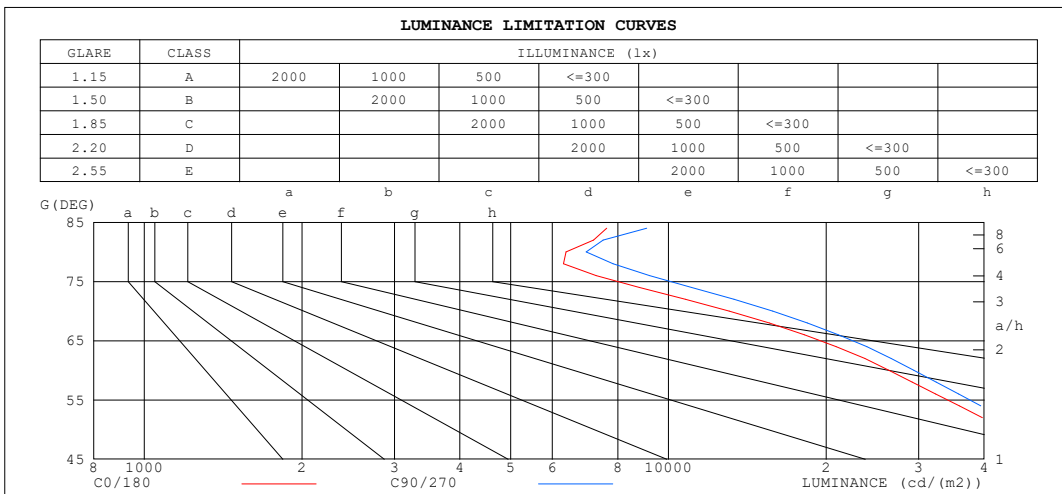
γ	C0	C45	C90	C135	C180	C225	C270	C315	γ	∅ zone	∅ total	%lum, lamp
10	443.2	459.6	469.4	460.3	439.5	460.3	469.4	459.6	0- 10	46.67	46.67	12.6,12.6
20	248.9	276.2	276.7	269.3	247.6	269.3	276.7	276.2	10- 20	100.3	146.9	39.5,39.5
30	124.4	135.5	135.0	133.4	120.3	133.4	135.0	135.5	20- 30	87.42	234.3	63,63
40	68.05	70.68	72.36	72.90	63.72	72.90	72.36	70.68	30- 40	60.39	294.7	79.3,79.3
50	35.45	33.94	38.58	37.57	32.43	37.57	38.58	33.94	40- 50	39.86	334.6	90,90
60	16.53	14.74	18.45	16.87	15.12	16.87	18.45	14.74	50- 60	22.46	357.0	96,96
70	5.608	5.180	6.786	5.995	5.226	5.995	6.786	5.180	60- 70	10.60	367.6	98.9,98.9
80	1.389	1.429	1.520	1.486	1.291	1.486	1.520	1.429	70- 80	3.291	370.9	99.8,99.8
90	0	0	0.0060	0	0	0	0.0060	0	80- 90	0.8870	371.8	100,100
100									90-100			
110									100-110			
120									110-120			
130									120-130			
140									130-140			
150									140-150			
160									150-160			
170									160-170			
180									170-180			
DEG	LUMINOUS INTENSITY:cd									UNIT:lm		

C Range: 0 - 180DEG
 C Interval: 15.0DEG
 Test Speed: MEDIUM
 Temperature:20°C
 Operators:Elaine
 Test Date:10 November 2023

γ Range: 0 - 90DEG
 γ Interval: 2.0DEG
 Test System:EVERFINE GO-SPEX500_V1 SYSTEM V2.00.473
 Humidity:65.0%
 Test Distance:3.100m [K=1.0000]
 Remarks: AGL-300-55X40
 3W / 5500K
 24V DC

LUMINANCE LIMITATION CURVES

Test:U:23.878V I:0.1389A P:3.3176W PF:1.0000 Freq:0Hz UTHDi:0.00% ITHDi:0.00% KDisp:0 Lamp Flux:371.825x1 lm		
NAME: AGL-300-55X40	TYPE: MR16 LAMP	WEIGHT:
SPEC.: AGL-300-55X40	DIM.:	SERIAL No.: -
MFR.: AQUALUX	SUR.:	Shielding Angle:



LUMINANCE cd/(m2)		
G (DEG)	C0/180	C90/270
85	9145	10899
80	6370	6968
75	9364	11772
70	13055	15798
65	21652	24776
60	26320	29380
55	36745	40385
50	43908	47785
45	59851	64096

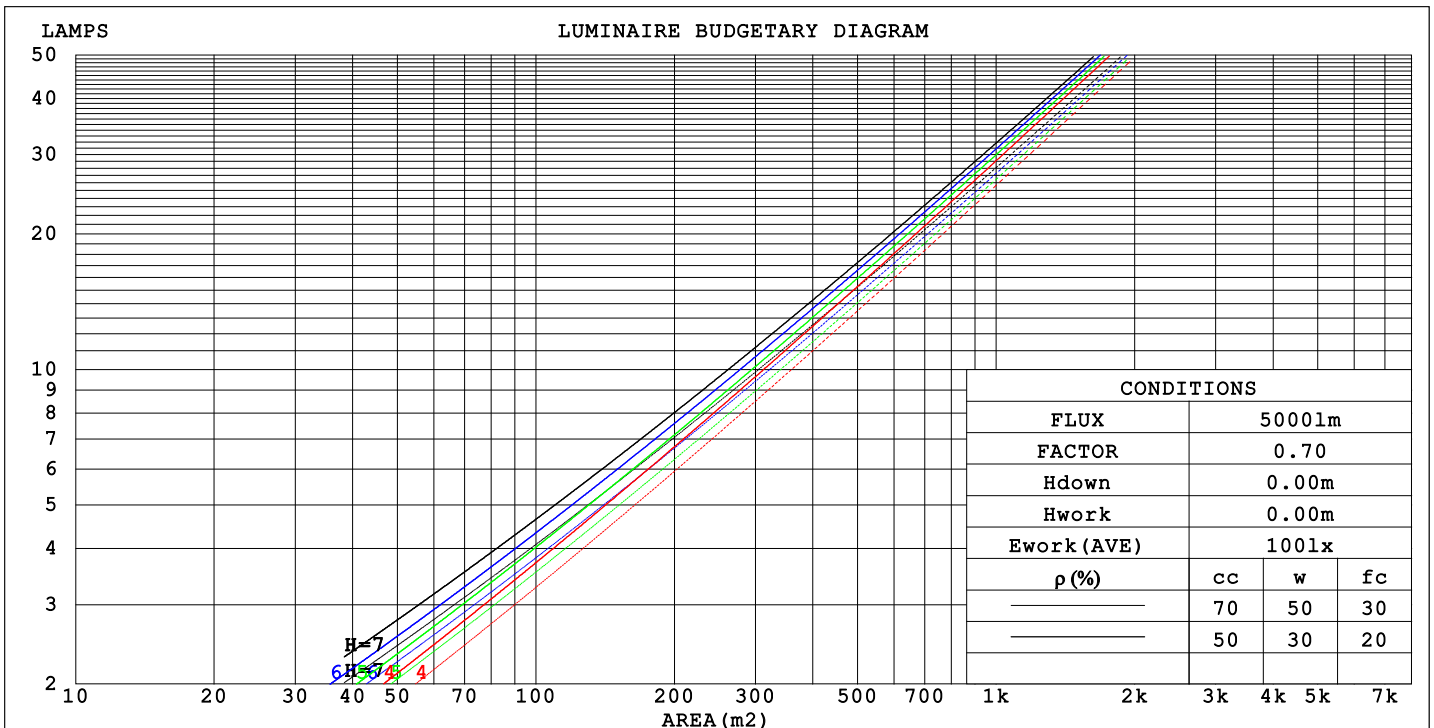
C Range: 0 - 180DEG
 C Interval: 15.0DEG
 Test Speed: MEDIUM
 Temperature: 20°C
 Operator: Elaine
 Test Date: 10 November 2023

γ Range: 0 - 90DEG
 γ Interval: 2.0DEG
 Test System: EVERFINE GO-SPEX500_V1 SYSTEM V2.00.473
 Humidity: 65.0%
 Test Distance: 3.100m [K=1.0000]
 Remarks: AGL-300-55X40
 3W / 5500K
 24V DC

CU AND LUMINAIRE BUDGETARY ESTIMATE DIAGRAM

Test:U:23.878V I:0.1389A P:3.3176W PF:1.0000 Freq:0Hz		
UTHDi:0.00% ITHDi:0.00% KDisp:0 Lamp Flux:371.825x1 lm		
NAME: AGL-300-55X40	TYPE: MR16 LAMP	WEIGHT:
SPEC.: AGL-300-55X40	DIM.:	SERIAL No.: -
MFR.: AQUALUX	SUR.:	Shielding Angle:

pcc	80%			70%			50%			30%			10%			0
	50%	30%	10%	50%	30%	10%	50%	30%	10%	50%	30%	10%	50%	30%	10%	
p _w																
p _{fc}	20%			20%			20%			20%			20%			0
RCR	RCR:Room Cavity Ratio						Coefficients of Utilization (CU)									
0.0	1.19	1.19	1.19	1.16	1.16	1.16	1.11	1.11	1.11	1.06	1.06	1.06	1.02	1.02	1.02	1.00
1.0	1.10	1.07	1.04	1.08	1.05	1.03	1.03	1.01	.00	.00	.98	.97	.96	.95	.94	.92
2.0	1.01	.96	.93	.99	.95	.92	.96	.93	.90	.93	.90	.88	.90	.88	.86	.84
3.0	.93	.88	.83	.92	.87	.83	.89	.85	.81	.87	.83	.80	.84	.81	.79	.77
4.0	.87	.80	.76	.85	.80	.75	.83	.78	.74	.81	.77	.74	.79	.76	.73	.71
5.0	.81	.74	.70	.80	.74	.69	.78	.73	.69	.76	.72	.68	.74	.71	.67	.66
6.0	.75	.69	.64	.75	.68	.64	.73	.68	.64	.72	.67	.63	.70	.66	.63	.61
7.0	.71	.64	.60	.70	.64	.60	.69	.63	.59	.67	.63	.59	.66	.62	.59	.57
8.0	.67	.60	.56	.66	.60	.56	.65	.59	.55	.64	.59	.55	.63	.58	.55	.54
9.0	.63	.57	.52	.62	.56	.52	.61	.56	.52	.60	.56	.52	.60	.55	.52	.50
10.0	.60	.53	.49	.59	.53	.49	.58	.53	.49	.57	.53	.49	.57	.52	.49	.48



C Range: 0 - 180DEG
 C Interval: 15.0DEG
 Test Speed: MEDIUM
 Temperature: 20°C
 Operator: Elaine
 Test Date: 10 November 2023

γ Range: 0 - 90DEG
 γ Interval: 2.0DEG
 Test System: EVERFINE GO-SPEX500_V1 SYSTEM V2.00.473
 Humidity: 65.0%
 Test Distance: 3.100m [K=1.0000]
 Remarks: AGL-300-55X40
 3W / 5500K
 24V DC

WEC AND CCEC

Test:U:23.878V I:0.1389A P:3.3176W PF:1.0000 Freq:0Hz		
UTHDi:0.00% ITHDi:0.00% KDisp:0 Lamp Flux:371.825x1 lm		
NAME: AGL-300-55X40	TYPE: MR16 LAMP	WEIGHT:
SPEC.: AGL-300-55X40	DIM.:	SERIAL No.: -
MFR.: AQUALUX	SUR.:	Shielding Angle:

ρcc	80%			70%			50%			30%			10%			0
ρw	50%	30%	10%	50%	30%	10%	50%	30%	10%	50%	30%	10%	50%	30%	10%	0
ρfc	20%			20%			20%			20%			20%			0
RCR	RCR:Room Cavity Ratio						Wall Exitance Coefficients (WEC)									
0.0																
1.0	.198	.113	.036	.192	.109	.035	.179	.103	.033	.167	.097	.031	.157	.091	.029	
2.0	.191	.104	.032	.185	.102	.031	.174	.097	.030	.164	.092	.029	.155	.088	.028	
3.0	.181	.096	.029	.176	.094	.028	.166	.090	.027	.158	.087	.027	.150	.083	.026	
4.0	.171	.089	.026	.167	.087	.026	.159	.084	.025	.151	.081	.024	.144	.078	.024	
5.0	.162	.082	.024	.158	.081	.024	.151	.078	.023	.144	.076	.023	.138	.074	.022	
6.0	.153	.077	.022	.150	.076	.022	.143	.073	.021	.138	.071	.021	.132	.070	.021	
7.0	.145	.072	.020	.142	.071	.020	.137	.069	.020	.131	.067	.020	.127	.066	.019	
8.0	.138	.067	.019	.135	.066	.019	.130	.065	.019	.126	.064	.018	.121	.062	.018	
9.0	.131	.063	.018	.129	.063	.018	.124	.061	.017	.120	.060	.017	.116	.059	.017	
10.0	.125	.060	.017	.123	.059	.017	.119	.058	.016	.115	.057	.016	.111	.056	.016	

ρcc	80%			70%			50%			30%			10%			0
ρw	50%	30%	10%	50%	30%	10%	50%	30%	10%	50%	30%	10%	50%	30%	10%	0
ρfc	20%			20%			20%			20%			20%			0
RCR	RCR:Room Cavity Ratio						Ceiling Cavity Exitance Coefficients (CCEC)									
0.0	.190	.190	.190	.163	.163	.163	.111	.111	.111	.064	.064	.064	.020	.020	.020	
1.0	.173	.157	.143	.148	.135	.123	.101	.093	.085	.058	.054	.050	.019	.017	.016	
2.0	.159	.132	.110	.136	.114	.095	.093	.079	.066	.054	.046	.039	.017	.015	.013	
3.0	.147	.114	.087	.126	.098	.075	.087	.068	.053	.050	.040	.031	.016	.013	.010	
4.0	.138	.099	.070	.118	.086	.061	.081	.060	.043	.047	.035	.025	.015	.011	.008	
5.0	.129	.088	.057	.111	.076	.050	.076	.053	.035	.044	.031	.021	.014	.010	.007	
6.0	.122	.079	.048	.105	.068	.042	.072	.048	.030	.042	.028	.018	.014	.009	.006	
7.0	.115	.071	.041	.099	.062	.035	.068	.043	.025	.040	.026	.015	.013	.008	.005	
8.0	.109	.065	.035	.094	.056	.030	.065	.040	.022	.038	.023	.013	.012	.008	.004	
9.0	.104	.060	.030	.089	.052	.026	.062	.037	.019	.036	.022	.011	.012	.007	.004	
10.0	.099	.056	.027	.085	.048	.023	.059	.034	.017	.034	.020	.010	.011	.007	.003	

C Range: 0 - 180DEG
 C Interval: 15.0DEG
 Test Speed: MEDIUM
 Temperature:20°C
 Operators:Elaine
 Test Date:10 November 2023

γ Range: 0 - 90DEG
 γ Interval: 2.0DEG
 Test System:EVERFINE GO-SPEX500_V1 SYSTEM V2.00.473
 Humidity:65.0%
 Test Distance:3.100m [K=1.0000]
 Remarks: AGL-300-55X40
 3W / 5500K
 24V DC

UGR(Unified Glare Rating) Table

Test:U:23.878V I:0.1389A P:3.3176W PF:1.0000 Freq:0Hz										
UTHDi:0.00% ITHDi:0.00% KDisp:0 Lamp Flux:371.825x1 lm										
NAME: AGL-300-55X40					TYPE: MR16 LAMP			WEIGHT:		
SPEC.: AGL-300-55X40					DIM.:			SERIAL No.: -		
MFR.: AQUALUX					SUR.:			Shielding Angle:		
ceiling/cavity	0.7	0.7	0.5	0.5	0.3	0.7	0.7	0.5	0.5	0.3
walls	0.5	0.3	0.5	0.3	0.3	0.5	0.3	0.5	0.3	0.3
working plane	0.2	0.2	0.2	0.2	0.2	0.2	0.2	0.2	0.2	0.2
Room dimensions	Viewed crosswise					Viewed endwise				
x = 2H y = 2H	25.9	27.0	26.2	27.1	27.3	26.4	27.4	26.6	27.6	27.8
3H	26.1	27.1	26.4	27.3	27.5	26.7	27.7	27.0	27.9	28.1
4H	26.1	27.0	26.4	27.3	27.5	26.7	27.6	27.0	27.8	28.1
6H	26.1	26.9	26.4	27.2	27.4	26.7	27.5	27.0	27.8	28.0
8H	26.1	26.9	26.4	27.1	27.4	26.7	27.5	27.0	27.7	28.0
12H	26.0	26.8	26.4	27.1	27.4	26.6	27.4	27.0	27.7	28.0
4H 2H	26.0	26.9	26.3	27.1	27.4	26.4	27.3	26.7	27.6	27.8
3H	26.3	27.0	26.6	27.3	27.6	26.8	27.6	27.1	27.8	28.1
4H	26.3	27.0	26.6	27.3	27.6	26.8	27.5	27.2	27.8	28.2
6H	26.2	26.9	26.6	27.2	27.6	26.8	27.4	27.2	27.8	28.1
8H	26.3	26.8	26.7	27.2	27.6	26.8	27.4	27.2	27.7	28.1
12H	26.2	26.8	26.7	27.2	27.5	26.8	27.4	27.2	27.7	28.1
8H 4H	26.2	26.8	26.6	27.1	27.5	26.7	27.3	27.1	27.7	28.0
6H	26.2	26.7	26.6	27.1	27.5	26.7	27.2	27.2	27.6	28.0
8H	26.2	26.7	26.7	27.1	27.5	26.8	27.2	27.2	27.6	28.1
12H	26.3	26.6	26.7	27.1	27.5	26.8	27.2	27.3	27.6	28.1
12H 4H	26.2	26.7	26.6	27.1	27.5	26.7	27.2	27.1	27.6	28.0
6H	26.2	26.6	26.6	27.0	27.5	26.7	27.1	27.2	27.6	28.0
8H	26.2	26.6	26.7	27.0	27.5	26.8	27.1	27.2	27.6	28.0
Variations with the observer position at spacings(CIE Pub.117):										
S = 1.0H	+ 1.1 / - 1.6					+ 1.0 / - 1.5				
1.5H	+ 1.2 / - 1.3					+ 1.1 / - 1.2				
2.0H	+ 2.3 / - 2.2					+ 2.2 / - 2.1				

CIE Pub.117, 371.8 lm Total Lamp Luminous Flux Correct (8log(F/F0) = -3.4)
 Area: 0.001256 m2

C Range: 0 - 180DEG
 C Interval: 15.0DEG
 Test Speed: MEDIUM
 Temperature:20°C
 Operators:Elaine
 Test Date:10 November 2023

γ Range: 0 - 90DEG
 γ Interval: 2.0DEG
 Test System:EVERFINE GO-SPEX500_V1 SYSTEM V2.00.473
 Humidity:65.0%
 Test Distance:3.100m [K=1.0000]
 Remarks: AGL-300-55X40
 3W / 5500K
 24V DC

UTILIZATION FACTORS TABLE

Test:U:23.878V I:0.1389A P:3.3176W PF:1.0000 Freq:0Hz		
UTHDi:0.00% ITHDi:0.00% KDisp:0 Lamp Flux:371.825x1 lm		
NAME: AGL-300-55X40	TYPE: MR16 LAMP	WEIGHT:
SPEC.: AGL-300-55X40	DIM.:	SERIAL No.: -
MFR.: AQUALUX	SUR.:	Shielding Angle:

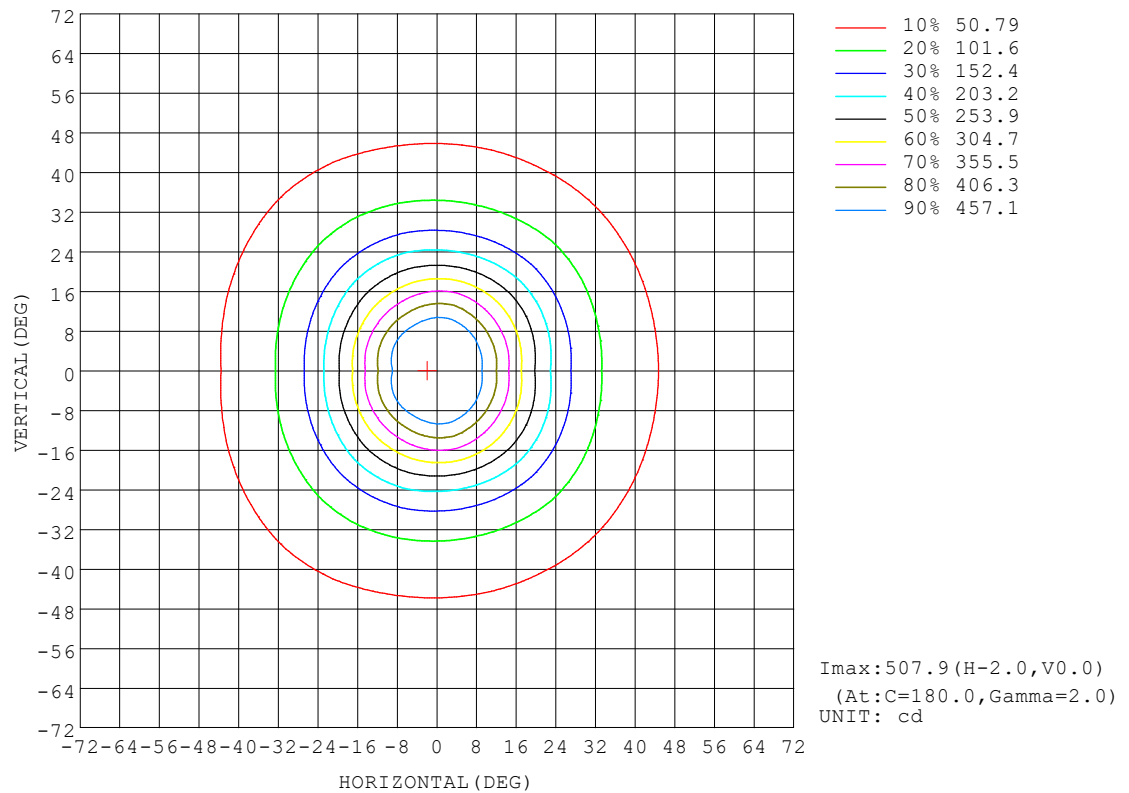
REFLECTANCE										
Ceiling	0.8	0.8	0.8	0.7	0.7	0.7	0.5	0.5	0.5	0
Walls	0.7	0.5	0.3	0.7	0.5	0.3	0.7	0.5	0.3	0
Working plane	0.2	0.2	0.2	0.2	0.2	0.2	0.2	0.2	0.2	0
ROOM INDEX	UTILIZATION FACTORS (PERCENT) $k(RI) \times RCR = 5$									
k = 0.60	78	70	66	78	70	66	77	70	65	61
0.80	87	79	75	86	79	75	85	78	74	70
1.00	93	86	81	92	85	81	90	86	81	76
1.25	98	92	87	97	91	87	95	90	86	81
1.50	101	95	91	100	95	91	98	93	90	84
2.00	105	100	96	104	99	95	101	97	94	88
2.50	108	103	99	106	102	98	103	99	96	90
3.00	110	105	102	108	104	101	104	101	99	92
4.00	112	109	106	110	107	104	106	104	102	94
5.00	113	111	108	111	109	107	107	105	104	96
ROOM INDEX	UF(total)									Direct
According to DIN EN 13032-2 2004			Suspended				SHRNOM = 1.25			

C Range: 0 - 180DEG
 C Interval: 15.0DEG
 Test Speed: MEDIUM
 Temperature:20°C
 Operators:Elaine
 Test Date:10 November 2023

γ Range: 0 - 90DEG
 γ Interval: 2.0DEG
 Test System:EVERFINE GO-SPEX500_V1 SYSTEM V2.00.473
 Humidity:65.0%
 Test Distance:3.100m [K=1.0000]
 Remarks: AGL-300-55X40
 3W / 5500K
 24V DC

ISOCANDELA DIAGRAM

Test:U:23.878V I:0.1389A P:3.3176W PF:1.0000 Freq:0Hz UTHDi:0.00% ITHDi:0.00% KDisp:0 Lamp Flux:371.825x1 lm		
NAME: AGL-300-55X40	TYPE: MR16 LAMP	WEIGHT:
SPEC.: AGL-300-55X40	DIM.:	SERIAL No.: -
MFR.: AQUALUX	SUR.:	Shielding Angle:

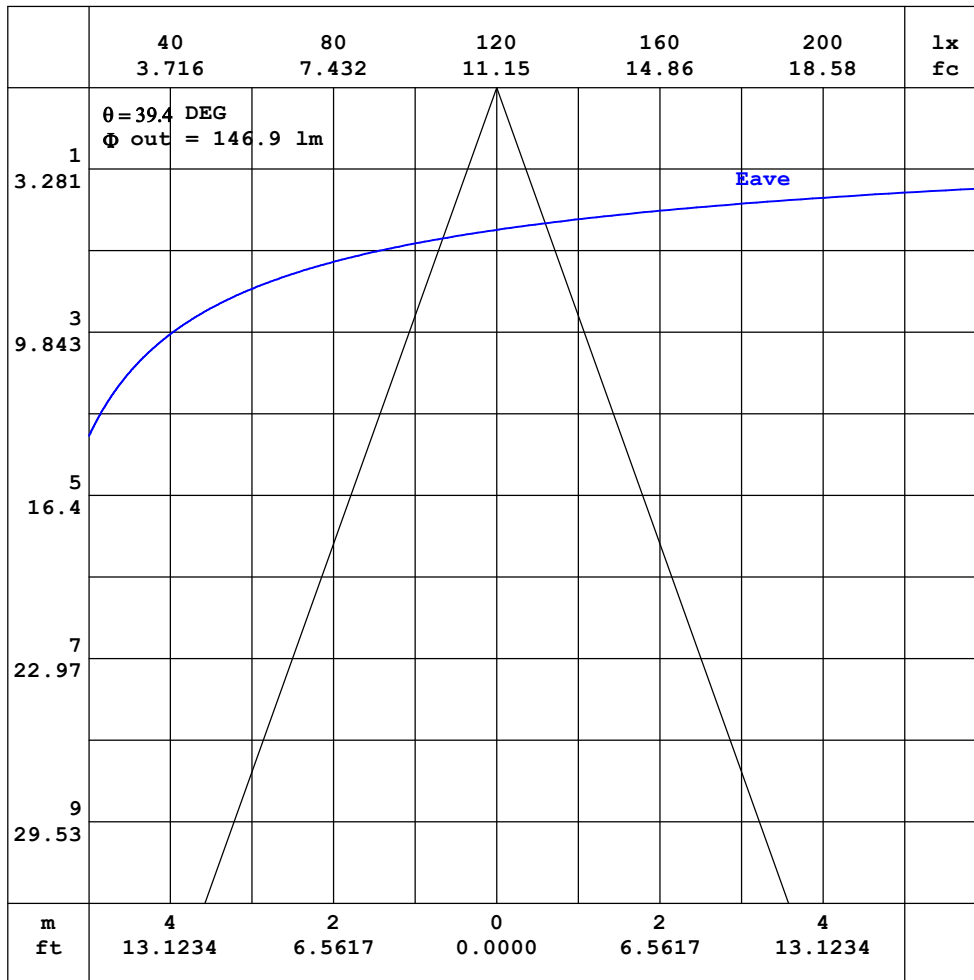


C Range: 0 - 180DEG
 C Interval: 15.0DEG
 Test Speed: MEDIUM
 Temperature:20°C
 Operators:Elaine
 Test Date:10 November 2023

γ Range: 0 - 90DEG
 γ Interval: 2.0DEG
 Test System:EVERFINE GO-SPEX500_V1 SYSTEM V2.00.473
 Humidity:65.0%
 Test Distance:3.100m [K=1.0000]
 Remarks: AGL-300-55X40
 3W / 5500K
 24V DC

AAI CURVES

Test:U:23.878V I:0.1389A P:3.3176W PF:1.0000 Freq:0Hz		
UTHDi:0.00% ITHDi:0.00% KDisp:0 Lamp Flux:371.825x1 lm		
NAME: AGL-300-55X40	TYPE: MR16 LAMP	WEIGHT:
SPEC.: AGL-300-55X40	DIM.:	SERIAL No.: -
MFR.: AQUALUX	SUR.:	Shielding Angle:



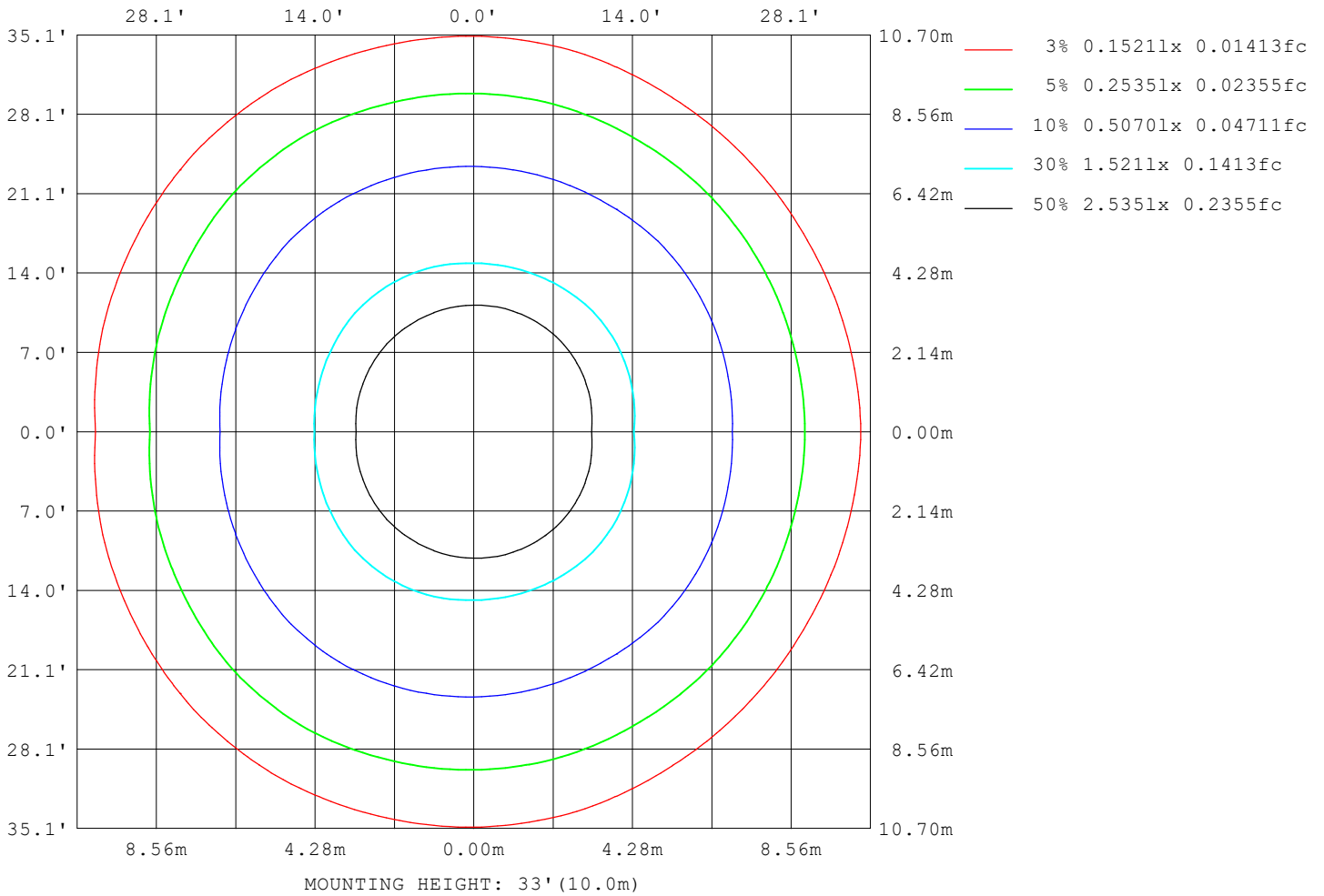
Note: The Curves indicate the illuminated area and the average illumination when the luminaire is at different distance.

C Range: 0 - 180DEG
 C Interval: 15.0DEG
 Test Speed: MEDIUM
 Temperature: 20°C
 Operators: Elaine
 Test Date: 10 November 2023

γ Range: 0 - 90DEG
 γ Interval: 2.0DEG
 Test System: EVERFINE GO-SPEX500_V1 SYSTEM V2.00.473
 Humidity: 65.0%
 Test Distance: 3.100m [K=1.0000]
 Remarks: AGL-300-55X40
 3W / 5500K
 24V DC

ISOLUX DIAGRAM

Test:U:23.878V I:0.1389A P:3.3176W PF:1.0000 Freq:0Hz		
UTHdi:0.00% ITHdi:0.00% KDisp:0 Lamp Flux:371.825x1 lm		
NAME: AGL-300-55X40	TYPE: MR16 LAMP	WEIGHT:
SPEC.: AGL-300-55X40	DIM.:	SERIAL No.: -
MFR.: AQUALUX	SUR.:	Shielding Angle:



C Range: 0 - 180DEG
 C Interval: 15.0DEG
 Test Speed: MEDIUM
 Temperature: 20°C
 Operators: Elaine
 Test Date: 10 November 2023

γ Range: 0 - 90DEG
 γ Interval: 2.0DEG
 Test System: EVERFINE GO-SPEX500_V1 SYSTEM V2.00.473
 Humidity: 65.0%
 Test Distance: 3.100m [K=1.0000]
 Remarks: AGL-300-55X40
 3W / 5500K
 24V DC

LED Avg.L Report

Test:U:23.878V I:0.1389A P:3.3176W PF:1.0000 Freq:0Hz UTHDi:0.00% ITHDi:0.00% KDisp:0 Lamp Flux:371.825x1 lm		
NAME: AGL-300-55X40	TYPE: MR16 LAMP	WEIGHT:
SPEC.: AGL-300-55X40	DIM.:	SERIAL No.: -
MFR.: AQUALUX	SUR.:	Shielding Angle:

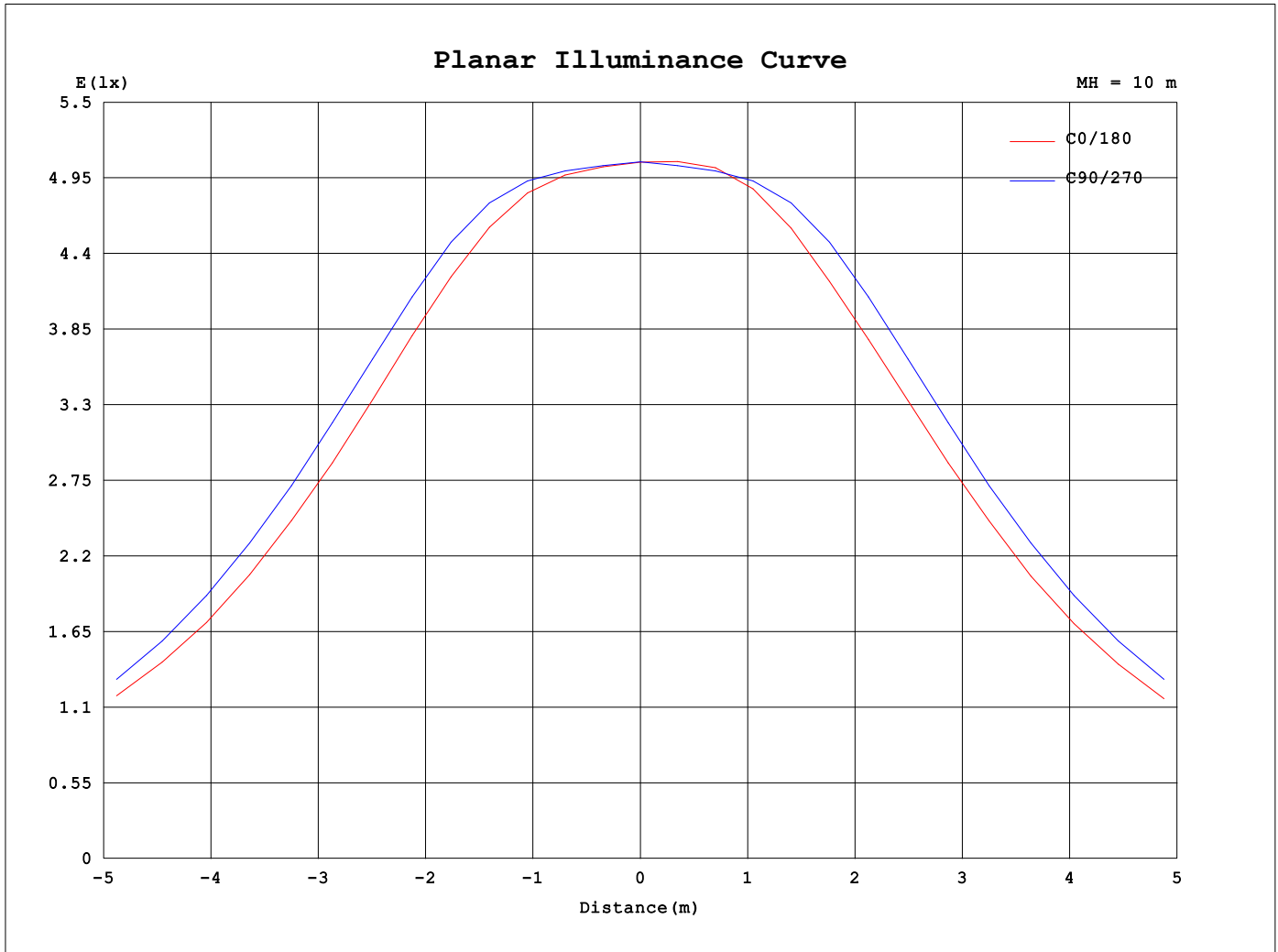
AvgL	cd/m2
L_0~180 (65) av	18708
L_0~180 (75) av	7832
L_0~180 (85) av	6557
L_90~270 (65) av	22481
L_90~270 (75) av	10070
L_90~270 (85) av	9692
L_45 (65) av	18937
L_45 (75) av	8442
L_45 (85) av	9131

Standard: GB/T 29293-2012

C Range: 0 - 180DEG
 C Interval: 15.0DEG
 Test Speed: MEDIUM
 Temperature:20°C
 Operators:Elaine
 Test Date:10 November 2023

γ Range: 0 - 90DEG
 γ Interval: 2.0DEG
 Test System:EVERFINE GO-SPEX500_V1 SYSTEM V2.00.473
 Humidity:65.0%
 Test Distance:3.100m [K=1.0000]
 Remarks: AGL-300-55X40
 3W / 5500K
 24V DC

Planar Illuminance Curve



C Range: 0 - 180DEG
 C Interval: 15.0DEG
 Test Speed: MEDIUM
 Temperature: 20°C
 Operator: Elaine
 Test Date: 10 November 2023

γ Range: 0 - 90DEG
 γ Interval: 2.0DEG
 Test System: EVERFINE GO-SPEX500_V1 SYSTEM V2.00.473
 Humidity: 65.0%
 Test Distance: 3.100m [K=1.0000]
 Remarks: AGL-300-55X40
 3W / 5500K
 24V DC

LUMINOUS DISTRIBUTION INTENSITY DATA

Test:U:23.878V I:0.1389A P:3.3176W PF:1.0000 Freq:0Hz		
UTHdi:0.00% ITHdi:0.00% KDisp:0 Lamp Flux:371.825x1 lm		
NAME: AGL-300-55X40	TYPE: MR16 LAMP	WEIGHT:
SPEC.: AGL-300-55X40	DIM.:	SERIAL No.: -
MFR.: AQUALUX	SUR.:	Shielding Angle:

Table--1

UNIT: cd

C (DEG) \ γ (DEG)	0	15	30	45	60	75	90	105	120	135	150	165	180	195	210	225	240	255	270
0	507	507	507	507	507	507	507	507	507	507	507	507	507	507	507	507	507	507	507
5	501	502	504	505	505	505	504	503	504	505	505	506	506	506	505	505	504	503	504
10	443	449	453	460	465	470	469	465	461	460	457	450	439	450	457	460	461	465	469
15	365	374	378	385	392	399	398	393	387	384	379	373	365	373	379	384	387	393	398
20	249	260	270	276	278	278	277	276	273	269	262	256	248	256	262	269	273	276	277
25	188	197	206	210	209	208	208	211	210	207	198	191	186	191	198	207	210	211	208
30	124	128	133	136	134	134	135	136	135	133	128	124	120	124	128	133	135	136	135
35	96.8	99.1	102	104	103	103	104	105	103	103	99.2	95.6	92.4	95.6	99.2	103	105	105	104
40	68.1	68.4	69.5	70.7	70.7	71.7	72.4	73.2	74.3	72.9	69.1	66.5	63.7	66.5	69.1	72.9	74.3	73.2	72.4
45	53.2	52.7	52.8	53.6	54.4	56.1	56.9	57.3	58.2	57.0	54.1	52.0	49.3	52.0	54.1	57.0	58.2	57.3	56.9
50	35.4	34.3	33.5	33.9	35.5	37.7	38.6	38.5	38.3	37.6	36.2	34.9	32.4	34.9	36.2	37.6	38.3	38.5	38.6
55	26.5	25.1	24.1	24.4	26.0	28.2	29.1	28.7	28.0	27.5	26.9	26.2	24.1	26.2	26.9	27.5	28.0	28.7	29.1
60	16.5	15.4	14.5	14.7	16.0	17.7	18.5	17.8	17.1	16.9	16.8	16.6	15.1	16.6	16.8	16.9	17.1	17.8	18.5
65	11.5	10.7	10.2	10.4	11.3	12.6	13.2	12.6	12.1	11.9	11.8	11.7	10.5	11.7	11.8	11.9	12.1	12.6	13.2
70	5.61	5.25	5.04	5.18	5.68	6.47	6.79	6.46	6.14	5.99	5.96	5.89	5.23	5.89	5.96	5.99	6.14	6.46	6.79
75	3.04	2.89	2.86	2.96	3.21	3.65	3.83	3.62	3.43	3.34	3.29	3.26	2.90	3.26	3.29	3.34	3.43	3.62	3.83
80	1.39	1.37	1.39	1.43	1.45	1.49	1.52	1.52	1.51	1.49	1.40	1.35	1.29	1.35	1.40	1.49	1.51	1.52	1.52
85	1.00	1.05	1.10	1.18	1.18	1.18	1.19	1.19	1.20	1.18	1.10	1.02	0.94	1.02	1.10	1.18	1.20	1.19	1.19
90	0.00	0.00	0.00	0.00	0.00	0.00	0.01	0.00	0.00	0.00	0.00	0.00	0.00	0.00	0.00	0.00	0.00	0.00	0.01

C Range: 0 - 180DEG
 C Interval: 15.0DEG
 Test Speed: MEDIUM
 Temperature:20°C
 Operators:Elaine
 Test Date:10 November 2023

γ Range: 0 - 90DEG
 γ Interval: 2.0DEG
 Test System:EVERFINE GO-SPEX500_V1 SYSTEM V2.00.473
 Humidity:65.0%
 Test Distance:3.100m [K=1.0000]
 Remarks: AGL-300-55X40
 3W / 5500K
 24V DC

LUMINOUS DISTRIBUTION INTENSITY DATA

Test:U:23.878V I:0.1389A P:3.3176W PF:1.0000 Freq:0Hz UTHDi:0.00% ITHDi:0.00% KDisp:0 Lamp Flux:371.825x1 lm		
NAME: AGL-300-55X40	TYPE: MR16 LAMP	WEIGHT:
SPEC.: AGL-300-55X40	DIM.:	SERIAL No.: -
MFR.: AQUALUX	SUR.:	Shielding Angle:

Table--2

UNIT: cd

C (DEG) \ γ (DEG)	285	300	315	330	345														
0	507	507	507	507	507														
5	505	505	505	504	502														
10	470	465	460	453	449														
15	399	392	385	378	374														
20	278	278	276	270	260														
25	208	209	210	206	197														
30	134	134	136	133	128														
35	103	103	104	102	99.1														
40	71.7	70.7	70.7	69.5	68.4														
45	56.1	54.4	53.6	52.8	52.7														
50	37.7	35.5	33.9	33.5	34.3														
55	28.2	26.0	24.4	24.1	25.1														
60	17.7	16.0	14.7	14.5	15.4														
65	12.6	11.3	10.4	10.2	10.7														
70	6.47	5.68	5.18	5.04	5.25														
75	3.65	3.21	2.96	2.86	2.89														
80	1.49	1.45	1.43	1.39	1.37														
85	1.18	1.18	1.18	1.10	1.05														
90	0.00	0.00	0.00	0.00	0.00														

C Range: 0 - 180DEG
 C Interval: 15.0DEG
 Test Speed: MEDIUM
 Temperature:20°C
 Operators:Elaine
 Test Date:10 November 2023

γ Range: 0 - 90DEG
 γ Interval: 2.0DEG
 Test System:EVERFINE GO-SPEX500_V1 SYSTEM V2.00.473
 Humidity:65.0%
 Test Distance:3.100m [K=1.0000]
 Remarks: AGL-300-55X40
 3W / 5500K
 24V DC