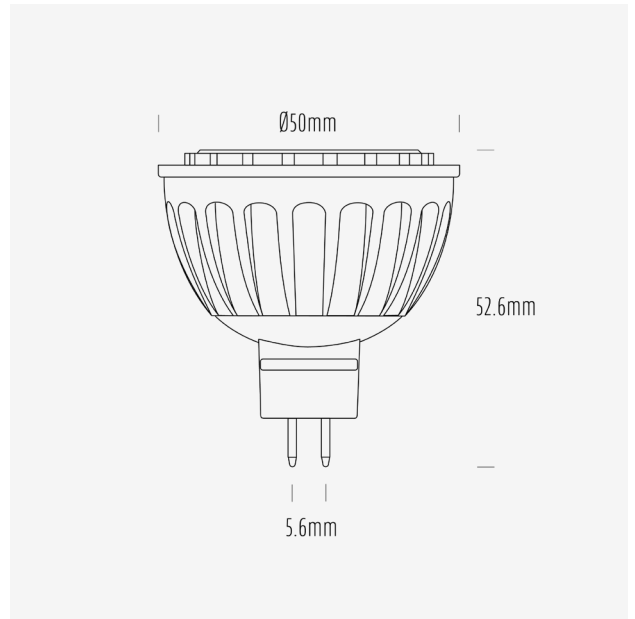


AGL 560 Series

MR16 LED Globes



AGL-560-30X60 / 3000K / MR16 / 60°



Product Data

Product Code	AGL-560-30X60			
Description	Aqualux 560 Series LED Lamp			
Type	MR16 GU5.6			
Construction	Aluminium Heatsink + PMMA Optic			
Warranty	3 Years			

Electrical Data

Input Voltage Range	12~24V AC/DC			
Nominal Voltage	24VDC			
Nominal Power	6W			
Nominal Current	250mA			
Input Voltage	12VDC	12VAC	24VDC	24VAC
Rated Power	6.0	3.8	5.5	5.7
Operating Frequency	-	50Hz	-	50Hz
Max. no. of lamps on AQD24-040	5	-	5	-
Max. no. of lamps on AQD24-100	17	-	17	-
Max. no. of lamps on AQD24-240	-	-	-	-
Dimming Compatibility	Non dimming			
Wiring Scheme	Parallel			
Startup Time	< 0.5s			

Mechanical & Thermal Data

Overall Length	52.6mm
Max Diameter	50mm
Lamp Base	GU5.6
Weight	55g
Operating Temp Range	-20° - 45°
IP Rating	IP20

Photometric Data

Nominal Flux (lm)	560			
Input Voltage	12VDC	12VAC	24VDC	24VAC
Input Power (W)	6.0	3.8	5.5	5.7
Rated Flux (lm)	552	355	545	545
Efficacy (lm/W)	92	93	99	96
CCT	3000K			
CCT Description	Warm White			
CRI (Ra)	82			
CRI (R9)	6			
TM-30 (Rf)	83			
TM-30 (Rg)	97			
SDCM	-			
Peak Intensity (cd)	537			
Nominal Beam Angle	40°			
Measured Beam Angle (FWHM)	56°			

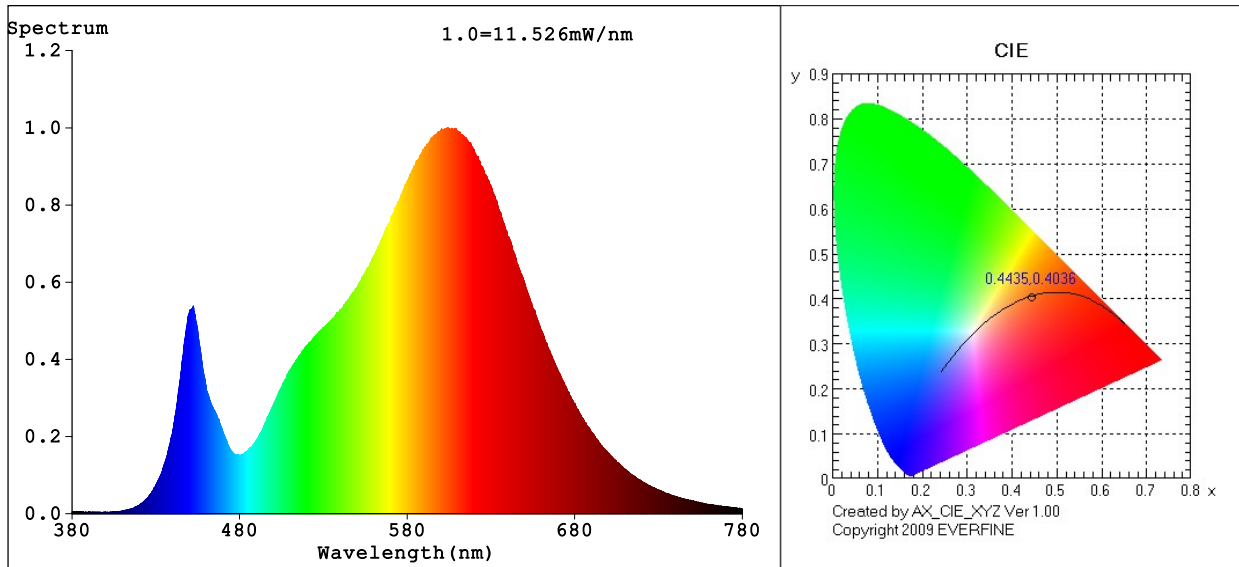
Lifespan Data

L70	15,000h
Switching Cycles	15,000

Compliance Data

EMI	Yes
RCM	N/A
Mercury Content	0mg

Spectrum Test Report



Color Parameters:

Chromaticity Coordinate: $x=0.4435$ $y=0.4036$ / $u'=0.2550$ $v'=0.5222$
 CCT=2889K (Duv=-0.0010) Dominant WL:Ld =583.7nm WL:Lc = --nm Purity=54.3%
 Ratio:R=23.6% G=74.1% B=2.3%; Peak WL:Lp=604.2nm FWHM=123.6nm
 Render Index:Ra=81.9 AvgR=76.2 TM30:Rf=83 Rg=97

R1 =80 R2 =90 R3 =96 R4 =80 R5 =80 R6 =88 R7 =82
 R8 =58 R9 =6 R10=78 R11=79 R12=70 R13=83 R14=99 R15=73

Photo Parameters:

Flux = 551.5 lm Eff. : 91.53 lm/W Fe = 1.683 W

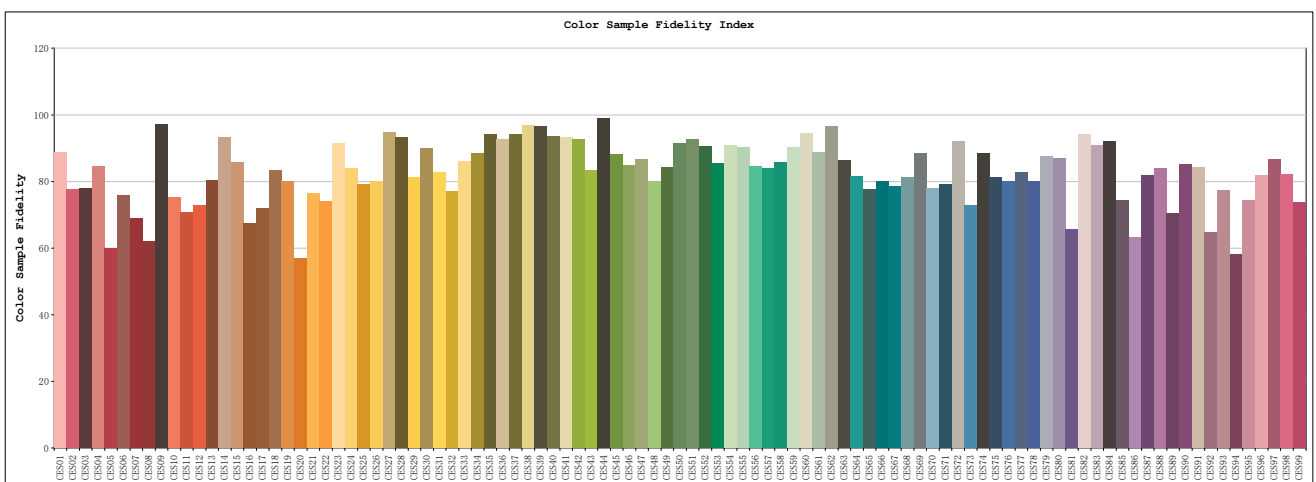
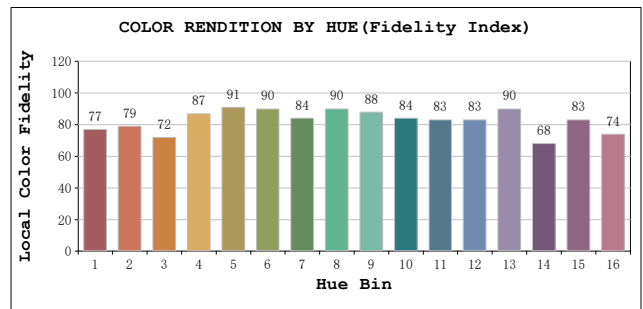
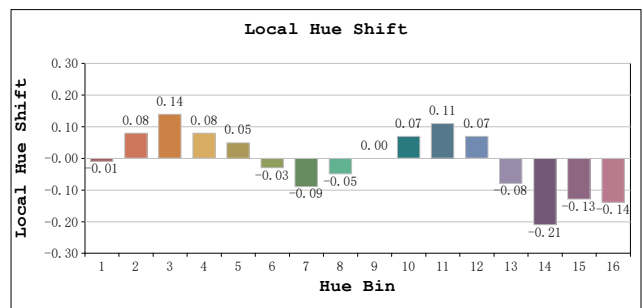
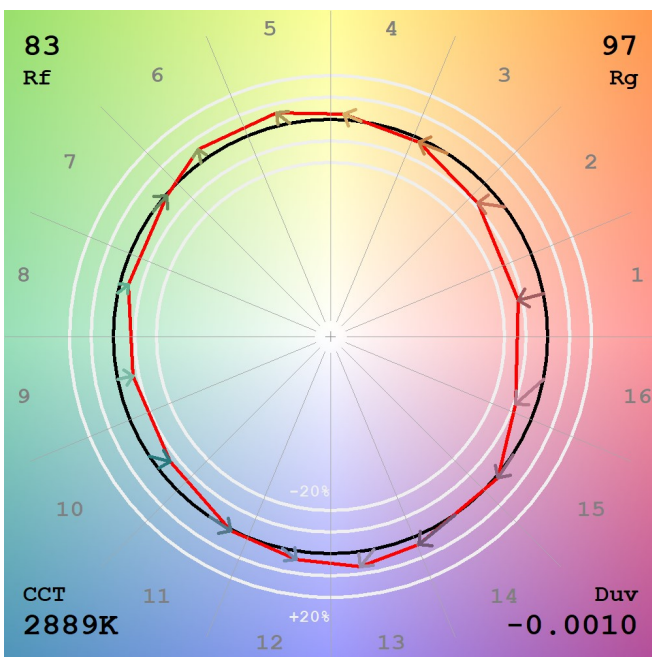
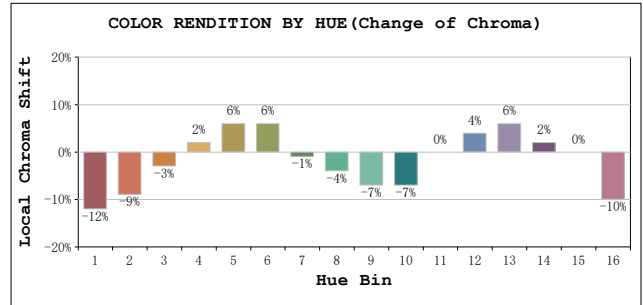
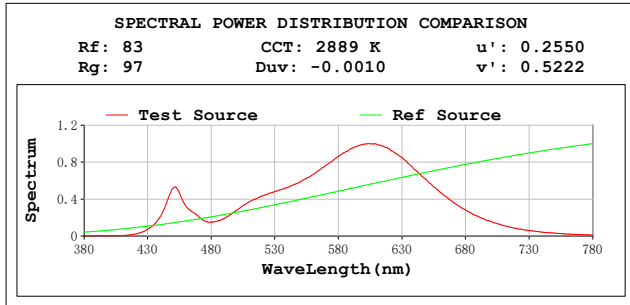
Electrical parameters:

V = 11.950 V I = 0.5042 A P = 6.025 W PF = 1.000
 LEVEL:OUT WHITE:ANSI_3000K
 Status: Integral T = 221 ms Ip = 53256 (81%)

GBT5702

TM30

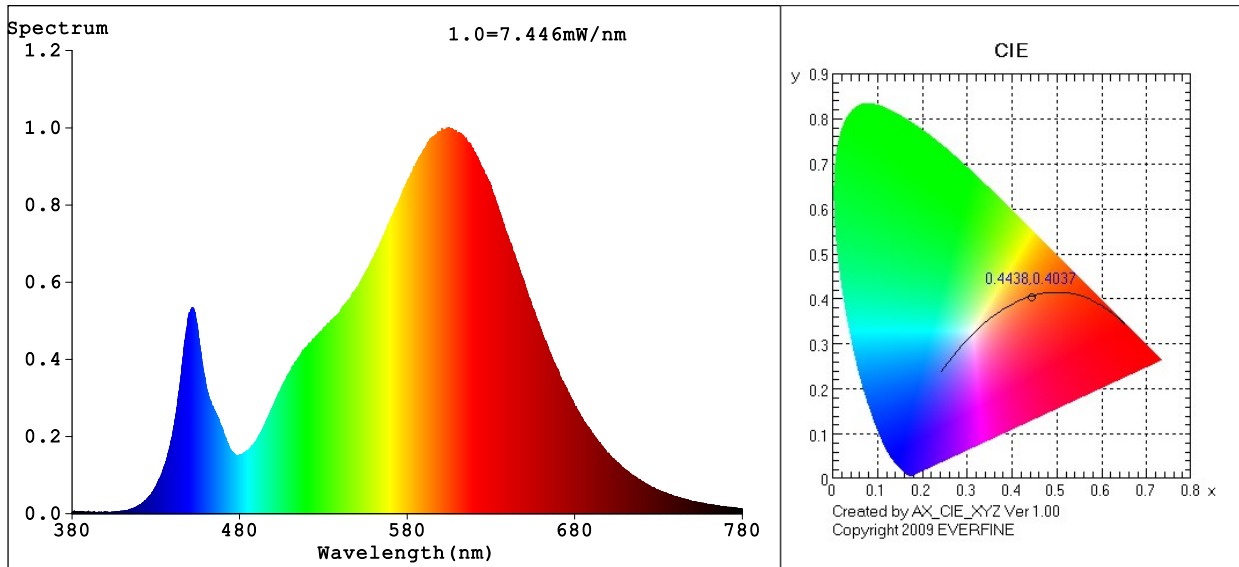
View Angle: 2 Deg



Model:AGL-560-30X60
 Tester:EC
 Temperature:25.3Deg
 Manufacturer:AQUALUX

Number:AGL-560-30X60
 Date:2023-11-14 10:26:00
 Humidity:65.0%
 Remarks:12V DC

Spectrum Test Report



Color Parameters:

Chromaticity Coordinate: $x=0.4438$ $y=0.4037$ / $u'=0.2552$ $v'=0.5223$
 CCT=2884K (Duv=-0.0010) Dominant WL:Ld =583.7nm WL:Lc = --nm Purity=54.4%
 Ratio:R=23.6% G=74.1% B=2.3%; Peak WL:Lp=605.1nm FWHM=122.5nm
 Render Index:Ra=81.8 AvgR=76.1 TM30:Rf=83 Rg=97

R1 =80 R2 =90 R3 =96 R4 =79 R5 =80 R6 =88 R7 =82
 R8 =58 R9 =6 R10=78 R11=78 R12=70 R13=83 R14=99 R15=73

Photo Parameters:

Flux = 355.1 lm Eff. : 93.44 lm/W Fe = 1.083 W

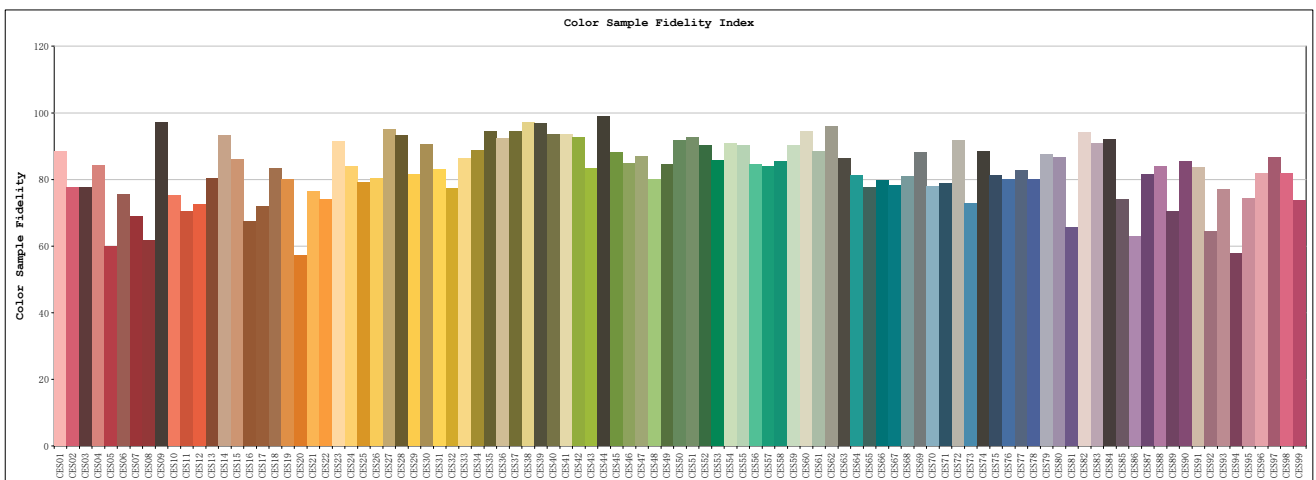
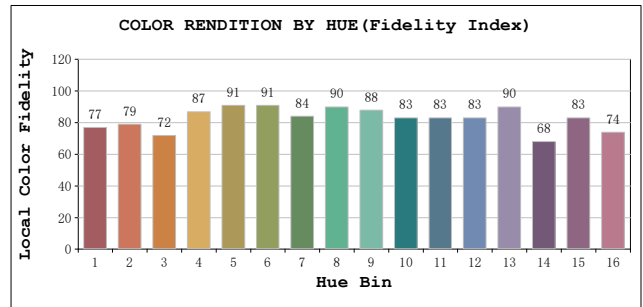
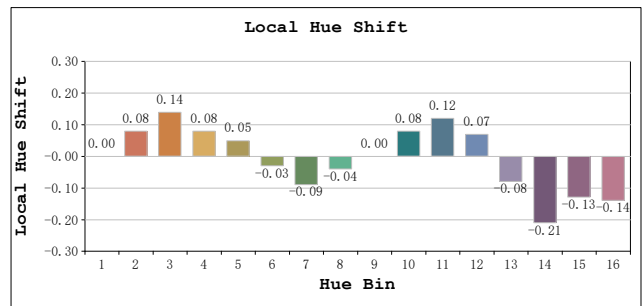
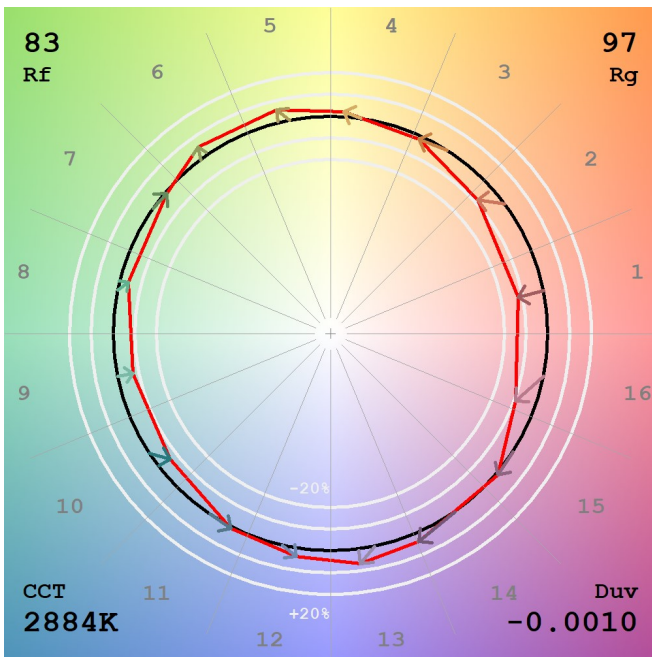
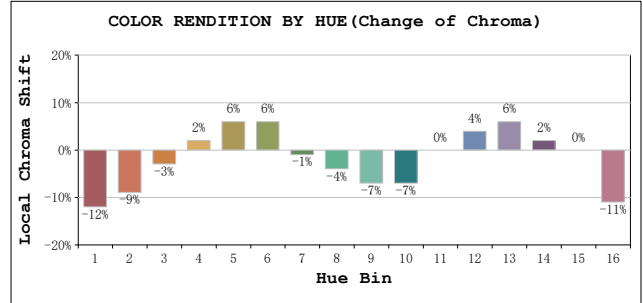
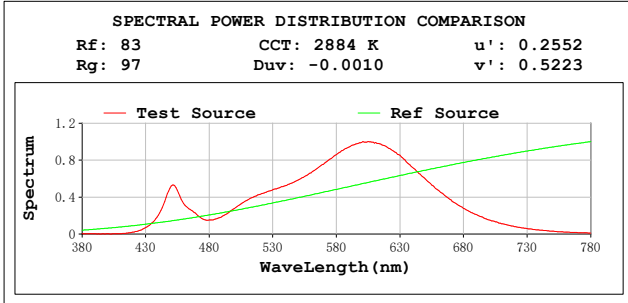
Electrical parameters:

V = 11.983 V I = 0.4119 A P = 3.801 W PF = 0.7700
 LEVEL:OUT WHITE:ANSI_3000K
 Status: Integral T = 221 ms Ip = 34488 (53%)

GBT5702

TM30

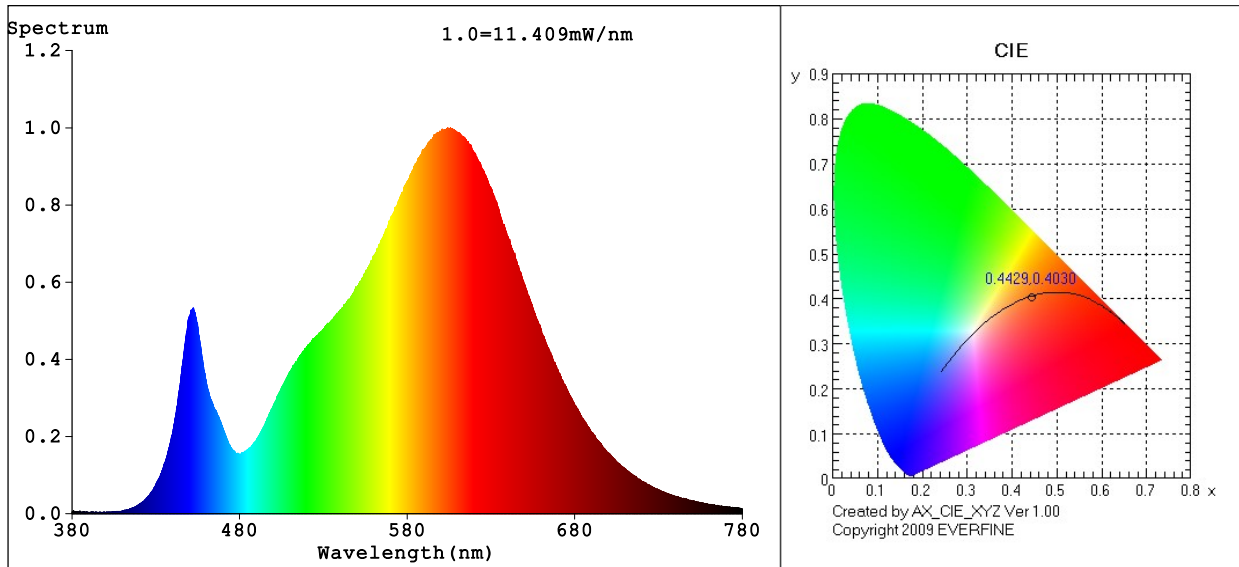
View Angle: 2 Deg



Model:AGL-560-30X60
 Tester:EC
 Temperature:25.3Deg
 Manufacturer:AQUALUX

Number:AGL-560-30X60
 Date:2023-11-14 10:28:57
 Humidity:65.0%
 Remarks:12V AC

Spectrum Test Report



Color Parameters:

Chromaticity Coordinate: $x=0.4429$ $y=0.4030$ / $u'=0.2549$ $v'=0.5219$
 CCT=2894K (Duv=-0.0012) Dominant WL:Ld =583.7nm WL:Lc = --nm Purity=53.9%
 Ratio:R=23.6% G=74.1% B=2.3% ; Peak WL:Lp=605.8nm FWHM=123.1nm
 Render Index:Ra=81.8 AvgR=76.0 TM30:Rf=83 Rg=97

R1 =80 R2 =90 R3 =96 R4 =79 R5 =80 R6 =88 R7 =82
 R8 =58 R9 =6 R10=78 R11=78 R12=70 R13=82 R14=99 R15=73

Photo Parameters:

Flux = 545.0 lm Eff. : 95.90 lm/W Fe = 1.665 W

Electrical parameters:

V = 23.965 V I = 0.3685 A P = 5.683 W PF = 0.6435

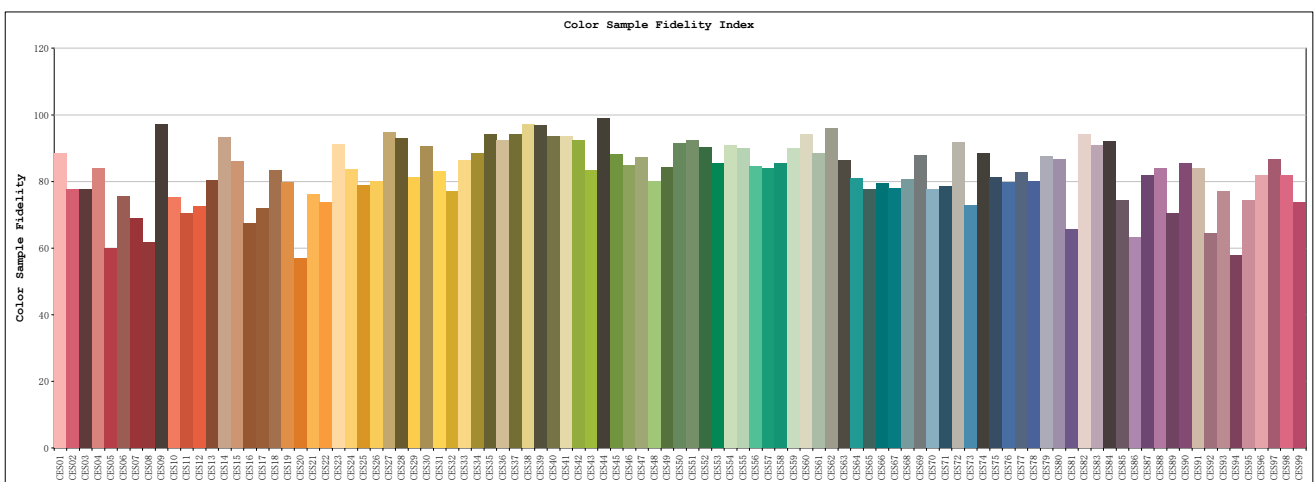
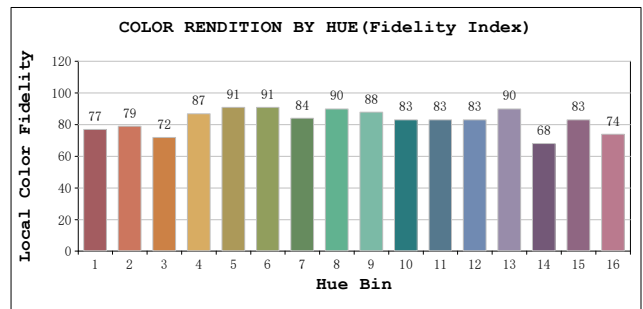
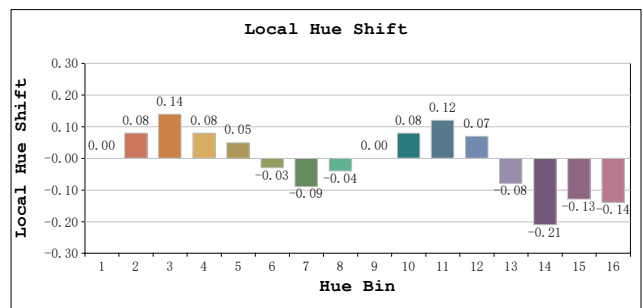
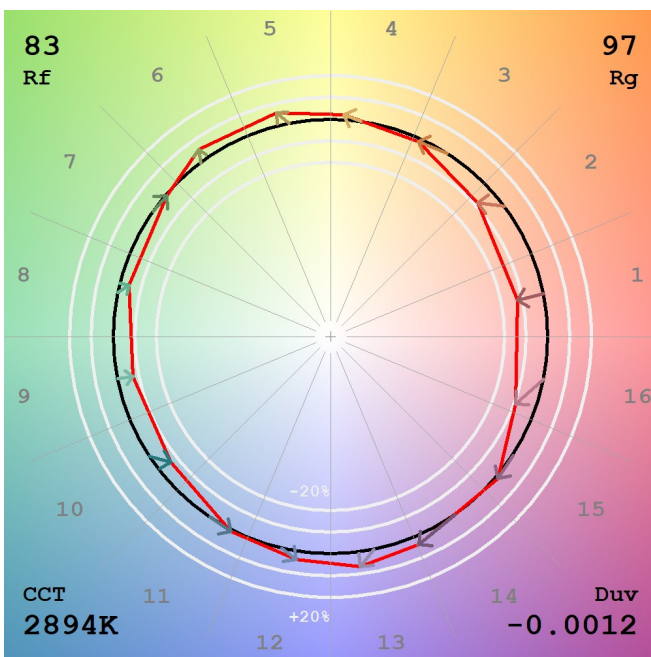
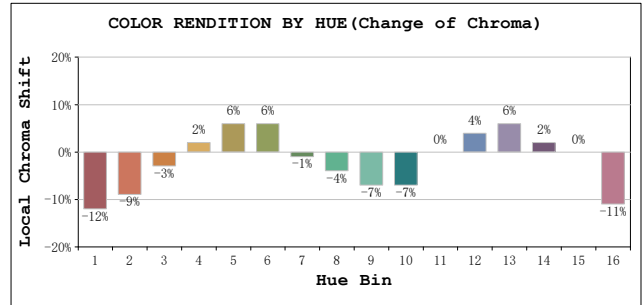
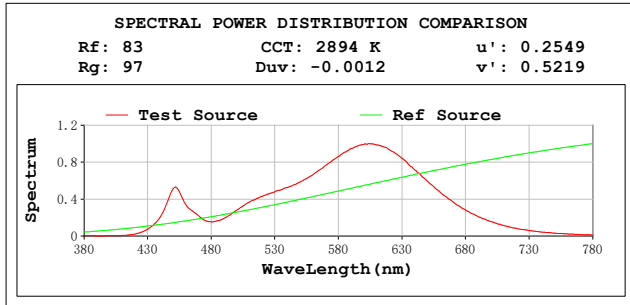
LEVEL:OUT WHITE:ANSI_3000K

Status: Integral T = 221 ms Ip = 52669 (80%)

GBT5702

TM30

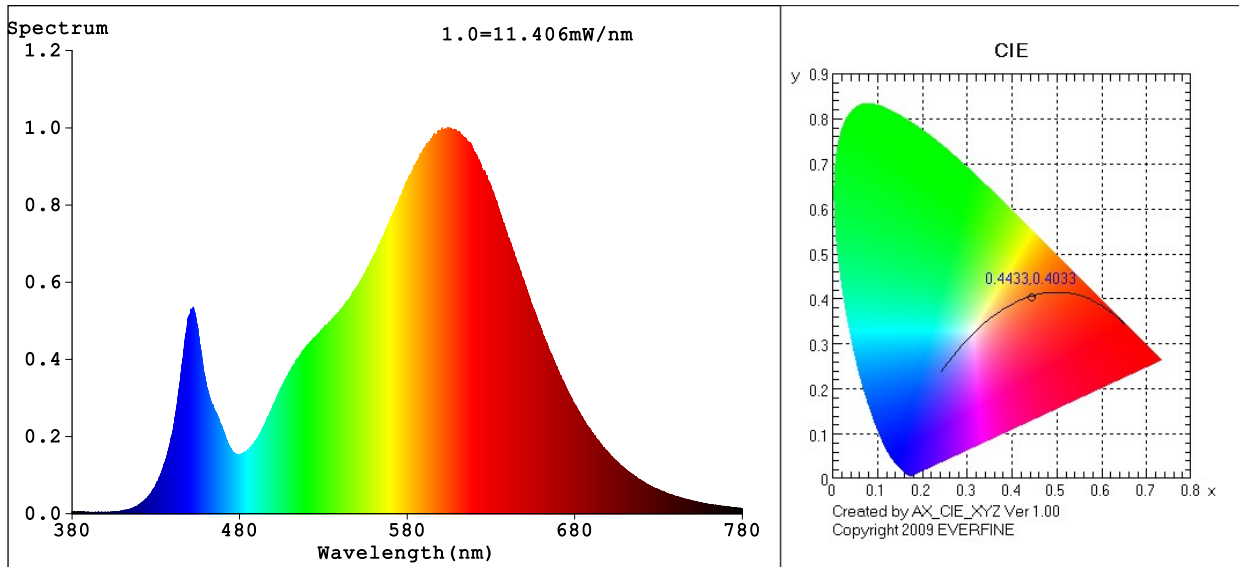
View Angle: 2 Deg



Model:AGL-560-30X60
 Tester:EC
 Temperature:25.3Deg
 Manufacturer:AQUALUX

Number:AGL-560-30X60
 Date:2023-11-14 10:30:01
 Humidity:65.0%
 Remarks:24V AC

Spectrum Test Report



Color Parameters:

Chromaticity Coordinate: $x=0.4433$ $y=0.4033$ / $u'=0.2550$ $v'=0.5220$
 CCT=2890K (Duv=-0.0011) Dominant WL:Ld =583.7nm WL:Lc = --nm Purity=54.1%
 Ratio:R=23.6% G=74.1% B=2.3%; Peak WL:Lp=604.1nm FWHM=123.3nm
 Render Index:Ra=81.8 AvgR=76.1 TM30:Rf=83 Rg=97

R1 =80 R2 =90 R3 =96 R4 =79 R5 =80 R6 =88 R7 =82
 R8 =58 R9 =6 R10=78 R11=78 R12=70 R13=83 R14=99 R15=73

Photo Parameters:

Flux = 545.3 lm Eff. : 98.90 lm/W Fe = 1.666 W

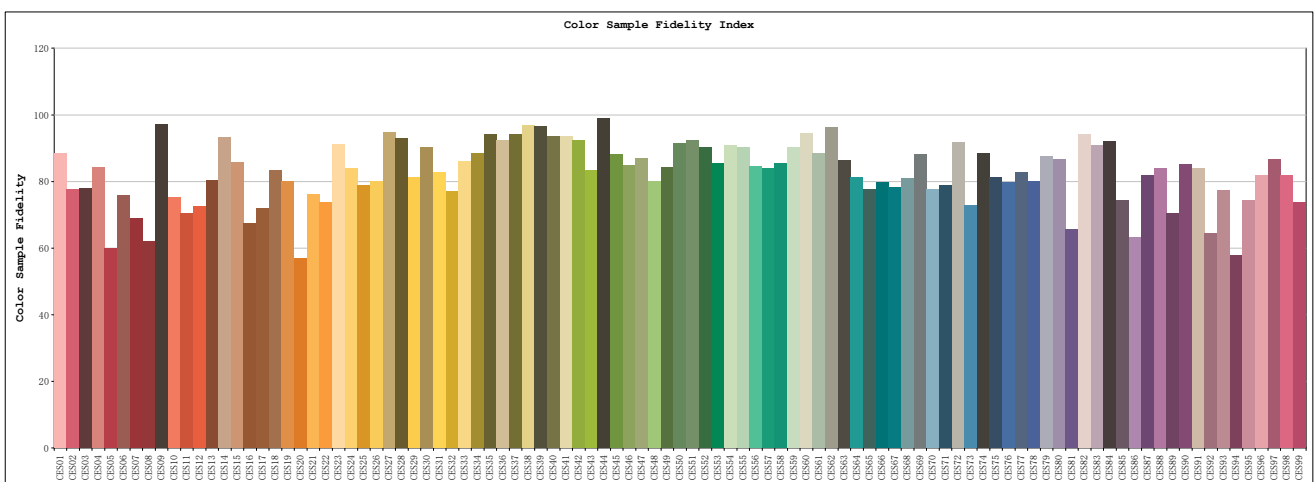
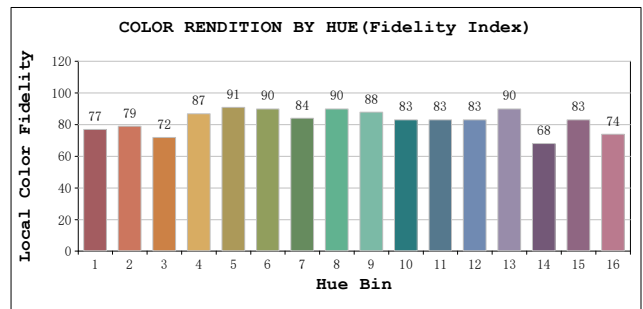
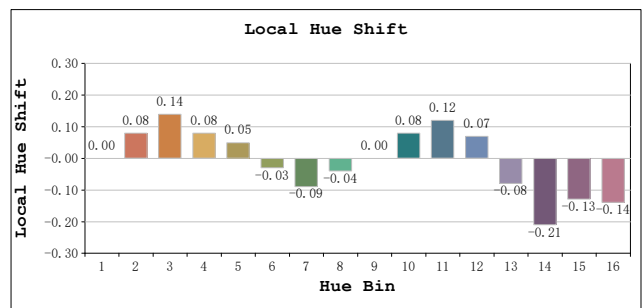
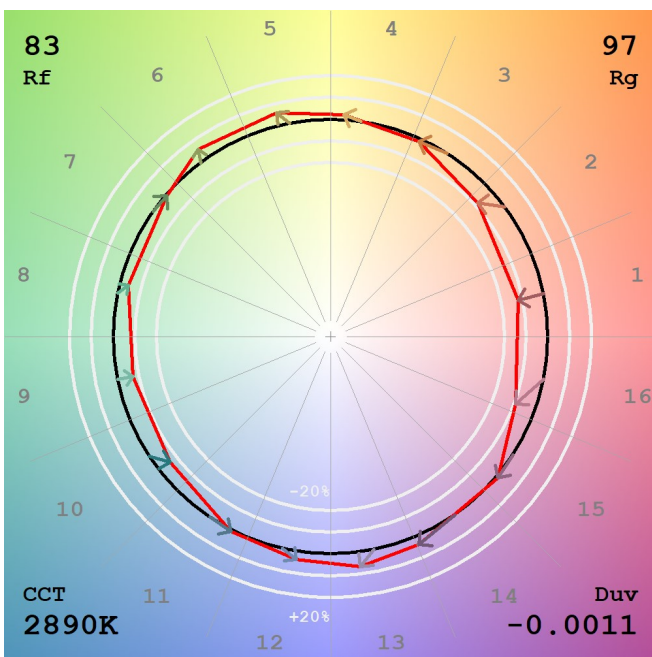
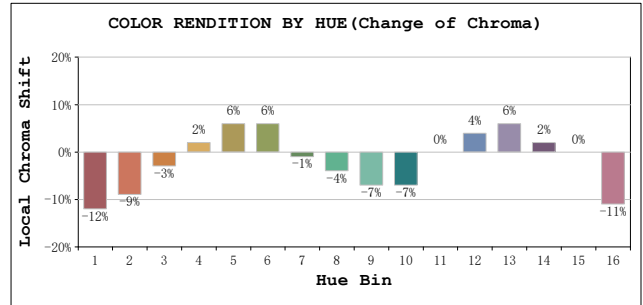
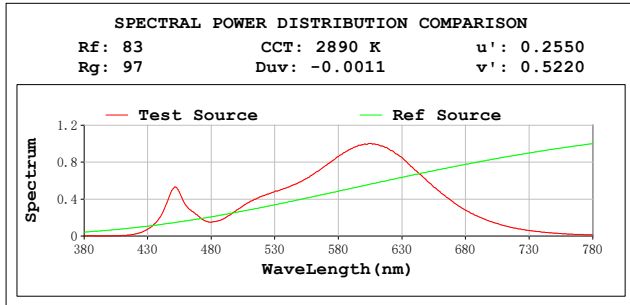
Electrical parameters:

V = 23.973 V I = 0.2300 A P = 5.514 W PF = 1.0000
 LEVEL:OUT WHITE:ANSI_3000K
 Status: Integral T = 221 ms Ip = 52834 (81%)

GBT5702

TM30

View Angle: 2 Deg



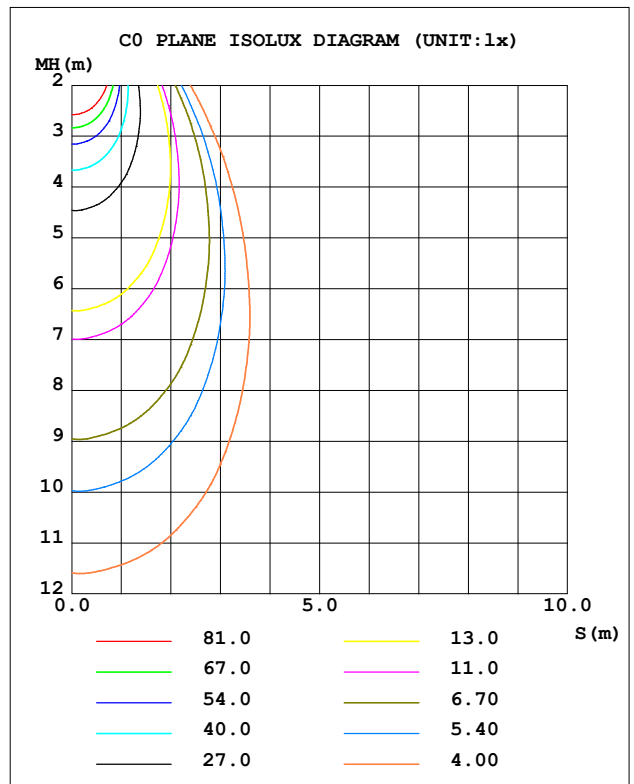
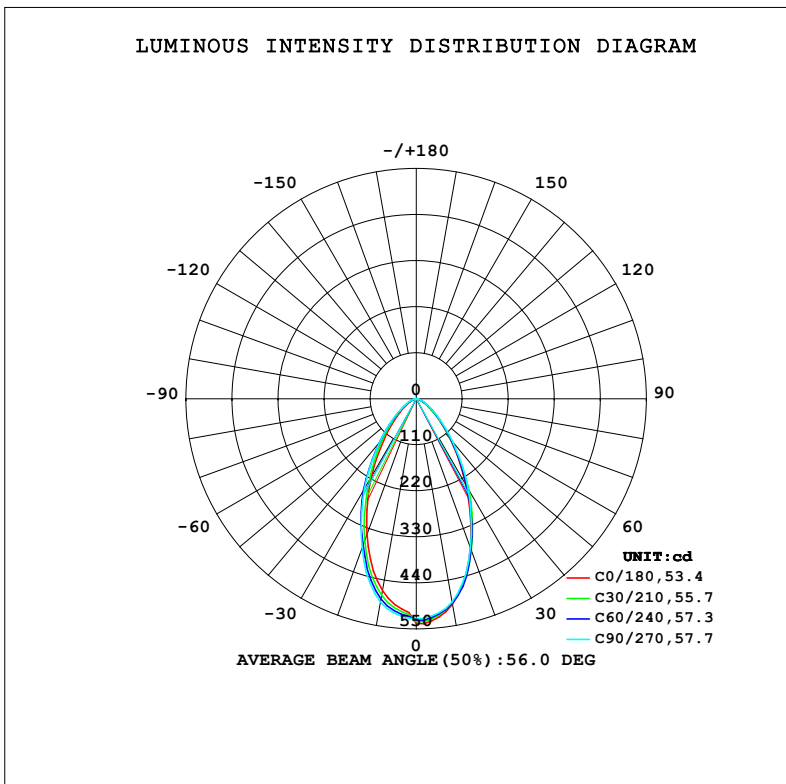
Model:AGL-560-30X60
 Tester:EC
 Temperature:25.3Deg
 Manufacturer:AQUALUX

Number:AGL-560-30X60
 Date:2023-11-10 18:23:35
 Humidity:65.0%
 Remarks:24V DC

LUMINAIRE PHOTOMETRIC TEST REPORT

Test:U:23.802V I:0.2234A P:5.3173W PF:1.0000 Freq:0Hz		
UTHDi:0.00% ITHDi:0.00% KDisp:0 Lamp Flux:562.932x1 lm		
NAME: AGL-560-30X60	TYPE: MR16 LAMP	WEIGHT:
SPEC.: AGL-560-30X60	DIM.:	SERIAL No.: -
MFR.: AQUALUX	SUR.:	Shielding Angle:

DATA OF LAMP		PHOTOMETRIC DATA			
MODEL	LED	I _{max} (cd)	537.4	S/MH (C0/180)	0.80
NOMINAL POWER (W)	3	LOR (%)	100.0	S/MH (C90/270)	0.85
RATED VOLTAGE (V)	24	TOTAL FLUX (lm)	562.93	η UP, DN (C0-180)	0.0, 50.2
NOMINAL FLUX (lm)	562.932	CIE CLASS	DIRECT	η UP, DN (C180-360)	0.0, 49.8
LAMPS INSIDE	1	η up (%)	0.0	CIBSE SHR NOM	0.75
TEST VOLTAGE (V)	24	η down (%)	100.0	CIBSE SHR MAX	0.90



C Range: 0 - 180DEG
 C Interval: 15.0DEG
 Test Speed: HIGH
 Temperature: 20°C
 Operators: Elaine
 Test Date: 10 November 2023

γ Range: 0 - 90DEG
 γ Interval: 2.0DEG
 Test System: EVERFINE GO-SPEX500_V1 SYSTEM V2.00.473
 Humidity: 65.0%
 Test Distance: 3.100m [K=1.0000]
 Remarks: AGL-560-30X60
 6W / 3000K
 24V DC

ZONAL FLUX DIAGRAM

ZONAL FLUX DIAGRAM:

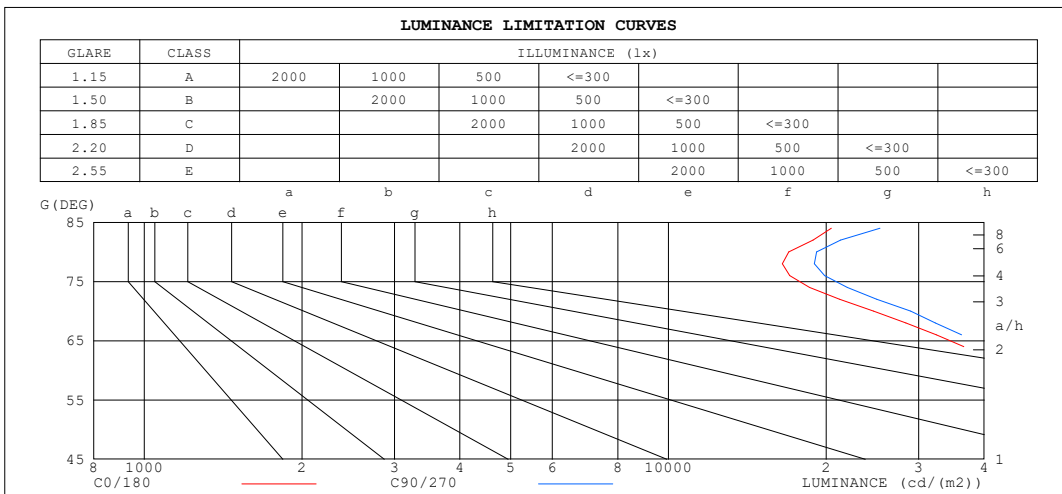
γ	C0	C45	C90	C135	C180	C225	C270	C315	γ	∅ zone	∅ total	%lum, lamp
10	498.7	495.4	493.2	481.7	465.9	481.7	493.2	495.4	0- 10	48.38	48.38	8.59,8.59
20	378.1	383.4	378.2	366.5	344.3	366.5	378.2	383.4	10- 20	122.0	170.4	30.3,30.3
30	237.5	245.4	249.0	238.8	215.2	238.8	249.0	245.4	20- 30	140.4	310.8	55.2,55.2
40	127.3	132.0	136.8	130.9	112.0	130.9	136.8	132.0	30- 40	113.4	424.2	75.4,75.4
50	61.08	62.56	67.04	63.55	52.40	63.55	67.04	62.56	40- 50	71.51	495.7	88.1,88.1
60	28.06	27.87	30.61	28.60	23.48	28.60	30.61	27.87	50- 60	38.67	534.4	94.9,94.9
70	10.57	11.09	12.44	11.23	8.851	11.23	12.44	11.09	60- 70	18.93	553.3	98.3,98.3
80	3.696	3.903	4.180	3.986	3.523	3.986	4.180	3.903	70- 80	7.107	560.5	99.6,99.6
90	0.0071	0.0107	0.0448	0.0099	0.0075	0.0099	0.0448	0.0107	80- 90	2.482	562.9	100,100
100									90-100			
110									100-110			
120									110-120			
130									120-130			
140									130-140			
150									140-150			
160									150-160			
170									160-170			
180									170-180			
DEG	LUMINOUS INTENSITY:cd								UNIT:lm			

C Range: 0 - 180DEG
 C Interval: 15.0DEG
 Test Speed: HIGH
 Temperature:20°C
 Operators:Elaine
 Test Date:10 November 2023

γ Range: 0 - 90DEG
 γ Interval: 2.0DEG
 Test System:EVERFINE GO-SPEX500_V1 SYSTEM V2.00.473
 Humidity:65.0%
 Test Distance:3.100m [K=1.0000]
 Remarks: AGL-560-30X60
 6W / 3000K
 24V DC

LUMINANCE LIMITATION CURVES

Test:U:23.802V I:0.2234A P:5.3173W PF:1.0000 Freq:0Hz UTHDi:0.00% ITHDi:0.00% KDisp:0 Lamp Flux:562.932x1 lm		
NAME: AGL-560-30X60	TYPE: MR16 LAMP	WEIGHT:
SPEC.: AGL-560-30X60	DIM.:	SERIAL No.: -
MFR.: AQUALUX	SUR.:	Shielding Angle:



LUMINANCE cd/(m2)		
G (DEG)	C0/180	C90/270
85	24524	30354
80	16947	19167
75	19775	23356
70	24617	28960
65	37944	41859
60	44684	48743
55	62207	68095
50	75653	83044
45	107321	116530

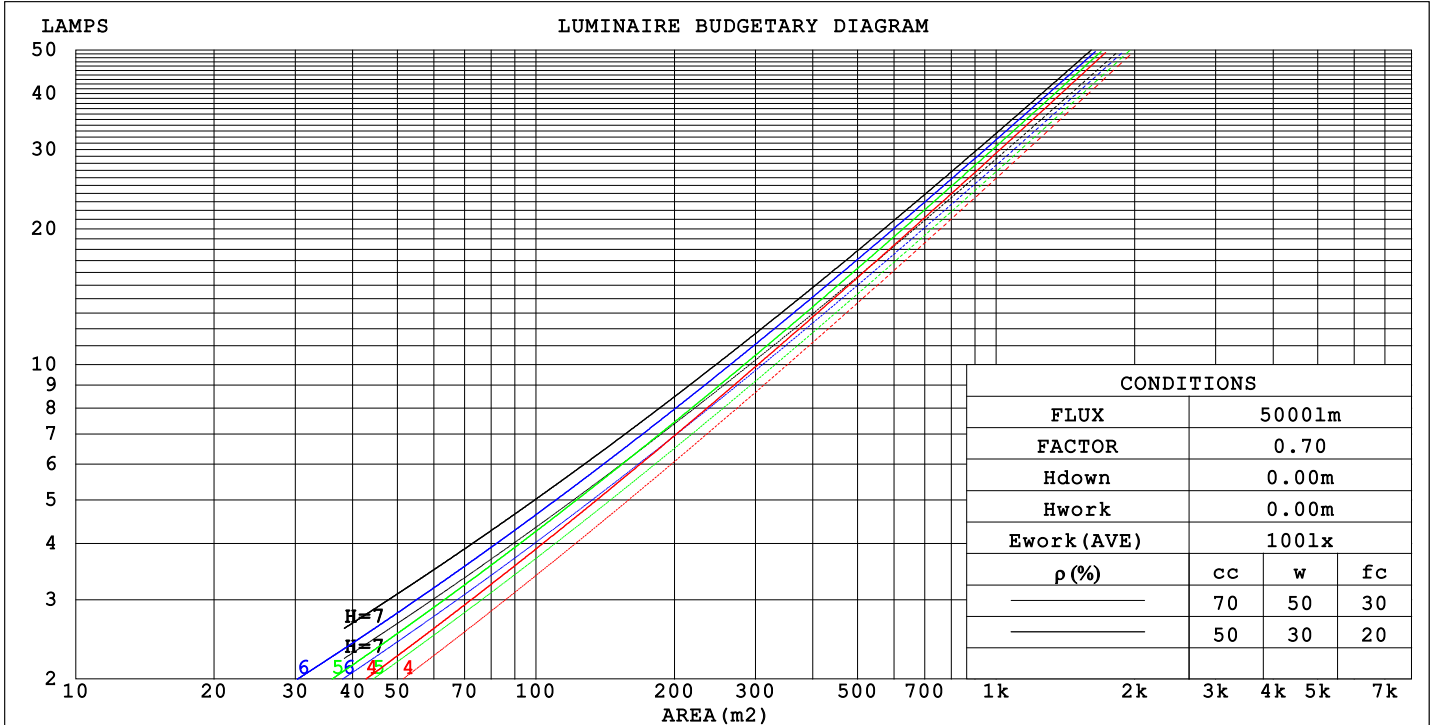
C Range: 0 - 180DEG
 C Interval: 15.0DEG
 Test Speed: HIGH
 Temperature:20°C
 Operators:Elaine
 Test Date:10 November 2023

γ Range: 0 - 90DEG
 γ Interval: 2.0DEG
 Test System:EVERFINE GO-SPEX500_V1 SYSTEM V2.00.473
 Humidity:65.0%
 Test Distance:3.100m [K=1.0000]
 Remarks: AGL-560-30X60
 6W / 3000K
 24V DC

CU AND LUMINAIRE BUDGETARY ESTIMATE DIAGRAM

Test:U:23.802V I:0.2234A P:5.3173W PF:1.0000 Freq:0Hz		
UTHDi:0.00% ITHDi:0.00% KDisp:0 Lamp Flux:562.932x1 lm		
NAME: AGL-560-30X60	TYPE: MR16 LAMP	WEIGHT:
SPEC.: AGL-560-30X60	DIM.:	SERIAL No.: -
MFR.: AQUALUX	SUR.:	Shielding Angle:

pcc	80%			70%			50%			30%			10%			0
	50%	30%	10%	50%	30%	10%	50%	30%	10%	50%	30%	10%	50%	30%	10%	
pw																
pfc	20%			20%			20%			20%			20%			0
RCR	RCR:Room Cavity Ratio						Coefficients of Utilization (CU)									
0.0	1.19	1.19	1.19	1.16	1.16	1.16	1.11	1.11	1.11	1.06	1.06	1.06	1.02	1.02	1.02	1.00
1.0	1.09	1.06	1.03	1.07	1.04	1.02	1.03	1.00	.98	.99	.97	.95	.95	.94	.93	.91
2.0	.99	.95	.91	.98	.93	.90	.94	.91	.88	.91	.88	.86	.88	.86	.84	.82
3.0	.91	.85	.80	.90	.84	.80	.87	.82	.78	.84	.80	.77	.82	.79	.76	.74
4.0	.84	.77	.72	.83	.77	.72	.80	.75	.71	.78	.74	.70	.76	.72	.69	.68
5.0	.77	.71	.65	.76	.70	.65	.74	.69	.65	.73	.68	.64	.71	.67	.63	.62
6.0	.72	.65	.60	.71	.64	.60	.69	.63	.59	.68	.63	.59	.66	.62	.58	.57
7.0	.67	.60	.55	.66	.59	.55	.65	.59	.54	.63	.58	.54	.62	.57	.54	.52
8.0	.62	.55	.51	.62	.55	.51	.60	.55	.50	.59	.54	.50	.58	.54	.50	.48
9.0	.58	.52	.47	.58	.51	.47	.57	.51	.47	.56	.51	.47	.55	.50	.47	.45
10.0	.55	.48	.44	.54	.48	.44	.53	.48	.44	.53	.47	.44	.52	.47	.43	.42



C Range: 0 - 180DEG
 C Interval: 15.0DEG
 Test Speed: HIGH
 Temperature: 20°C
 Operators: Elaine
 Test Date: 10 November 2023

γ Range: 0 - 90DEG
 γ Interval: 2.0DEG
 Test System: EVERFINE GO-SPEX500_V1 SYSTEM V2.00.473
 Humidity: 65.0%
 Test Distance: 3.100m [K=1.0000]
 Remarks: AGL-560-30X60
 6W / 3000K
 24V DC

WEC AND CCEC

Test:U:23.802V I:0.2234A P:5.3173W PF:1.0000 Freq:0Hz		
UTHDi:0.00% ITHDi:0.00% KDisp:0 Lamp Flux:562.932x1 lm		
NAME: AGL-560-30X60	TYPE: MR16 LAMP	WEIGHT:
SPEC.: AGL-560-30X60	DIM.:	SERIAL No.: -
MFR.: AQUALUX	SUR.:	Shielding Angle:

ρcc	80%			70%			50%			30%			10%			0
ρw	50%	30%	10%	50%	30%	10%	50%	30%	10%	50%	30%	10%	50%	30%	10%	0
ρfc	20%			20%			20%			20%			20%			0
RCR	RCR:Room Cavity Ratio						Wall Exitance Coefficients (WEC)									
0.0																
1.0	.214	.122	.038	.207	.118	.037	.194	.111	.036	.182	.105	.034	.172	.099	.032	
2.0	.205	.112	.035	.199	.110	.034	.189	.105	.033	.178	.100	.031	.169	.096	.030	
3.0	.195	.104	.031	.190	.102	.031	.180	.098	.030	.171	.094	.029	.163	.090	.028	
4.0	.184	.096	.028	.180	.094	.028	.171	.091	.027	.164	.088	.027	.157	.085	.026	
5.0	.174	.089	.026	.170	.087	.025	.163	.085	.025	.156	.082	.025	.150	.080	.024	
6.0	.165	.082	.024	.161	.081	.023	.155	.079	.023	.149	.077	.023	.143	.075	.022	
7.0	.156	.077	.022	.153	.076	.022	.147	.074	.021	.142	.073	.021	.137	.071	.021	
8.0	.148	.072	.020	.145	.072	.020	.140	.070	.020	.135	.069	.020	.131	.067	.020	
9.0	.141	.068	.019	.138	.067	.019	.134	.066	.019	.129	.065	.019	.125	.064	.018	
10.0	.134	.064	.018	.132	.064	.018	.128	.063	.018	.124	.061	.017	.120	.060	.017	

ρcc	80%			70%			50%			30%			10%			0
ρw	50%	30%	10%	50%	30%	10%	50%	30%	10%	50%	30%	10%	50%	30%	10%	0
ρfc	20%			20%			20%			20%			20%			0
RCR	RCR:Room Cavity Ratio						Ceiling Cavity Exitance Coefficients (CCEC)									
0.0	.190	.190	.190	.163	.163	.163	.111	.111	.111	.064	.064	.064	.020	.020	.020	
1.0	.174	.157	.142	.149	.135	.122	.102	.093	.085	.059	.054	.049	.019	.017	.016	
2.0	.161	.132	.108	.138	.114	.094	.094	.079	.065	.054	.046	.038	.017	.015	.012	
3.0	.150	.114	.085	.129	.098	.074	.088	.068	.052	.051	.040	.030	.016	.013	.010	
4.0	.141	.100	.068	.121	.086	.059	.083	.060	.042	.048	.035	.025	.015	.011	.008	
5.0	.133	.088	.056	.114	.076	.048	.079	.053	.034	.046	.031	.020	.015	.010	.007	
6.0	.126	.079	.046	.108	.069	.040	.074	.048	.028	.043	.028	.017	.014	.009	.006	
7.0	.119	.072	.039	.103	.062	.034	.071	.044	.024	.041	.026	.014	.013	.008	.005	
8.0	.113	.066	.034	.098	.057	.029	.068	.040	.021	.039	.024	.012	.013	.008	.004	
9.0	.108	.061	.029	.093	.053	.025	.065	.037	.018	.038	.022	.011	.012	.007	.004	
10.0	.103	.057	.026	.089	.049	.022	.062	.035	.016	.036	.020	.009	.012	.007	.003	

C Range: 0 - 180DEG
 C Interval: 15.0DEG
 Test Speed: HIGH
 Temperature:20°C
 Operators:Elaine
 Test Date:10 November 2023

γ Range: 0 - 90DEG
 γ Interval: 2.0DEG
 Test System:EVERFINE GO-SPEX500_V1 SYSTEM V2.00.473
 Humidity:65.0%
 Test Distance:3.100m [K=1.0000]
 Remarks: AGL-560-30X60
 6W / 3000K
 24V DC

UGR(Unified Glare Rating) Table

Test:U:23.802V I:0.2234A P:5.3173W PF:1.0000 Freq:0Hz										
UTHDi:0.00% ITHDi:0.00% KDisp:0 Lamp Flux:562.932x1 lm										
NAME: AGL-560-30X60					TYPE: MR16 LAMP			WEIGHT:		
SPEC.: AGL-560-30X60					DIM.:			SERIAL No.: -		
MFR.: AQUALUX					SUR.:			Shielding Angle:		
ceiling/cavity	0.7	0.7	0.5	0.5	0.3	0.7	0.7	0.5	0.5	0.3
walls	0.5	0.3	0.5	0.3	0.3	0.5	0.3	0.5	0.3	0.3
working plane	0.2	0.2	0.2	0.2	0.2	0.2	0.2	0.2	0.2	0.2
Room dimensions	Viewed crosswise					Viewed endwise				
x = 2H y = 2H	27.2	28.4	27.5	28.5	28.7	27.7	28.8	27.9	29.0	29.2
3H	27.4	28.5	27.7	28.7	28.9	28.0	29.0	28.2	29.2	29.4
4H	27.5	28.5	27.8	28.7	28.9	28.0	29.0	28.3	29.2	29.5
6H	27.5	28.4	27.8	28.6	28.9	28.0	29.0	28.3	29.2	29.5
8H	27.5	28.4	27.8	28.6	28.9	28.0	28.9	28.4	29.2	29.5
12H	27.5	28.4	27.8	28.6	28.9	28.1	28.9	28.4	29.2	29.5
4H 2H	27.3	28.3	27.6	28.5	28.8	27.7	28.7	28.0	28.9	29.1
3H	27.6	28.5	27.9	28.7	29.0	28.1	29.0	28.4	29.2	29.5
4H	27.7	28.5	28.0	28.8	29.1	28.2	29.0	28.6	29.3	29.6
6H	27.7	28.4	28.1	28.8	29.1	28.3	29.0	28.7	29.3	29.6
8H	27.8	28.4	28.2	28.8	29.2	28.3	29.0	28.7	29.3	29.7
12H	27.9	28.4	28.3	28.8	29.2	28.4	29.0	28.8	29.4	29.8
8H 4H	27.7	28.3	28.1	28.6	29.0	28.2	28.8	28.6	29.1	29.5
6H	27.8	28.3	28.2	28.7	29.1	28.3	28.8	28.7	29.2	29.6
8H	27.9	28.3	28.3	28.8	29.2	28.4	28.9	28.8	29.3	29.7
12H	28.0	28.4	28.5	28.8	29.3	28.6	28.9	29.0	29.4	29.9
12H 4H	27.6	28.2	28.0	28.6	29.0	28.1	28.7	28.5	29.1	29.5
6H	27.8	28.2	28.2	28.6	29.1	28.3	28.7	28.7	29.1	29.6
8H	27.9	28.3	28.4	28.7	29.2	28.4	28.8	28.9	29.2	29.7
Variations with the observer position at spacings(CIE Pub.117):										
S = 1.0H	+ 1.1 / - 1.6					+ 1.0 / - 1.4				
1.5H	+ 1.3 / - 1.2					+ 1.3 / - 1.0				
2.0H	+ 2.2 / - 1.6					+ 2.1 / - 1.5				

CIE Pub.117, 562.9 lm Total Lamp Luminous Flux Correct (8log(F/F0) = -2.0)
 Area: 0.001256 m2

C Range: 0 - 180DEG
 C Interval: 15.0DEG
 Test Speed: HIGH
 Temperature:20°C
 Operators:Elaine
 Test Date:10 November 2023

γ Range: 0 - 90DEG
 γ Interval: 2.0DEG
 Test System:EVERFINE GO-SPEX500_V1 SYSTEM V2.00.473
 Humidity:65.0%
 Test Distance:3.100m [K=1.0000]
 Remarks: AGL-560-30X60
 6W / 3000K
 24V DC

UTILIZATION FACTORS TABLE

Test:U:23.802V I:0.2234A P:5.3173W PF:1.0000 Freq:0Hz		
UTHDi:0.00% ITHDi:0.00% KDisp:0 Lamp Flux:562.932x1 lm		
NAME: AGL-560-30X60	TYPE: MR16 LAMP	WEIGHT:
SPEC.: AGL-560-30X60	DIM.:	SERIAL No.: -
MFR.: AQUALUX	SUR.:	Shielding Angle:

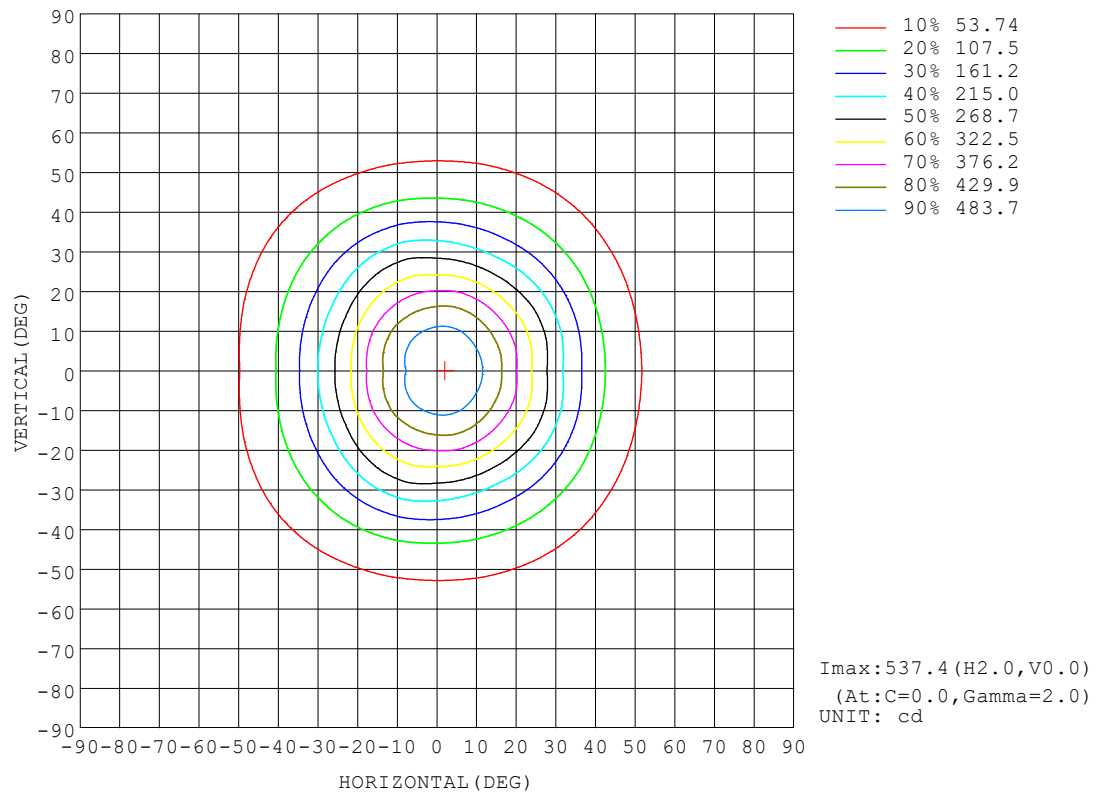
REFLECTANCE										
Ceiling	0.8	0.8	0.8	0.7	0.7	0.7	0.5	0.5	0.5	0
Walls	0.7	0.5	0.3	0.7	0.5	0.3	0.7	0.5	0.3	0
Working plane	0.2	0.2	0.2	0.2	0.2	0.2	0.2	0.2	0.2	0
ROOM INDEX	UTILIZATION FACTORS (PERCENT) $k(RI) \times RCR = 5$									
k = 0.60	76	68	63	75	67	63	74	67	62	58
0.80	85	77	72	84	77	72	83	76	71	66
1.00	91	84	79	90	83	79	88	84	78	73
1.25	97	90	85	95	89	85	93	88	84	79
1.50	100	94	89	99	93	89	96	91	88	82
2.00	104	99	95	103	98	94	100	96	92	86
2.50	107	102	98	105	100	97	102	98	95	88
3.00	109	104	101	107	103	100	103	100	98	91
4.00	111	108	105	109	106	103	105	103	101	93
5.00	113	110	107	111	108	106	107	105	103	95
ROOM INDEX	UF(total)									Direct
According to DIN EN 13032-2 2004			Suspended				SHRNOM = 1.25			

C Range: 0 - 180DEG
 C Interval: 15.0DEG
 Test Speed: HIGH
 Temperature:20°C
 Operators:Elaine
 Test Date:10 November 2023

γ Range: 0 - 90DEG
 γ Interval: 2.0DEG
 Test System:EVERFINE GO-SPEX500_V1 SYSTEM V2.00.473
 Humidity:65.0%
 Test Distance:3.100m [K=1.0000]
 Remarks: AGL-560-30X60
 6W / 3000K
 24V DC

ISOCANDELA DIAGRAM

Test:U:23.802V I:0.2234A P:5.3173W PF:1.0000 Freq:0Hz UTHDi:0.00% ITHDi:0.00% KDisp:0 Lamp Flux:562.932x1 lm		
NAME: AGL-560-30X60	TYPE: MR16 LAMP	WEIGHT:
SPEC.: AGL-560-30X60	DIM.:	SERIAL No.: -
MFR.: AQUALUX	SUR.:	Shielding Angle:

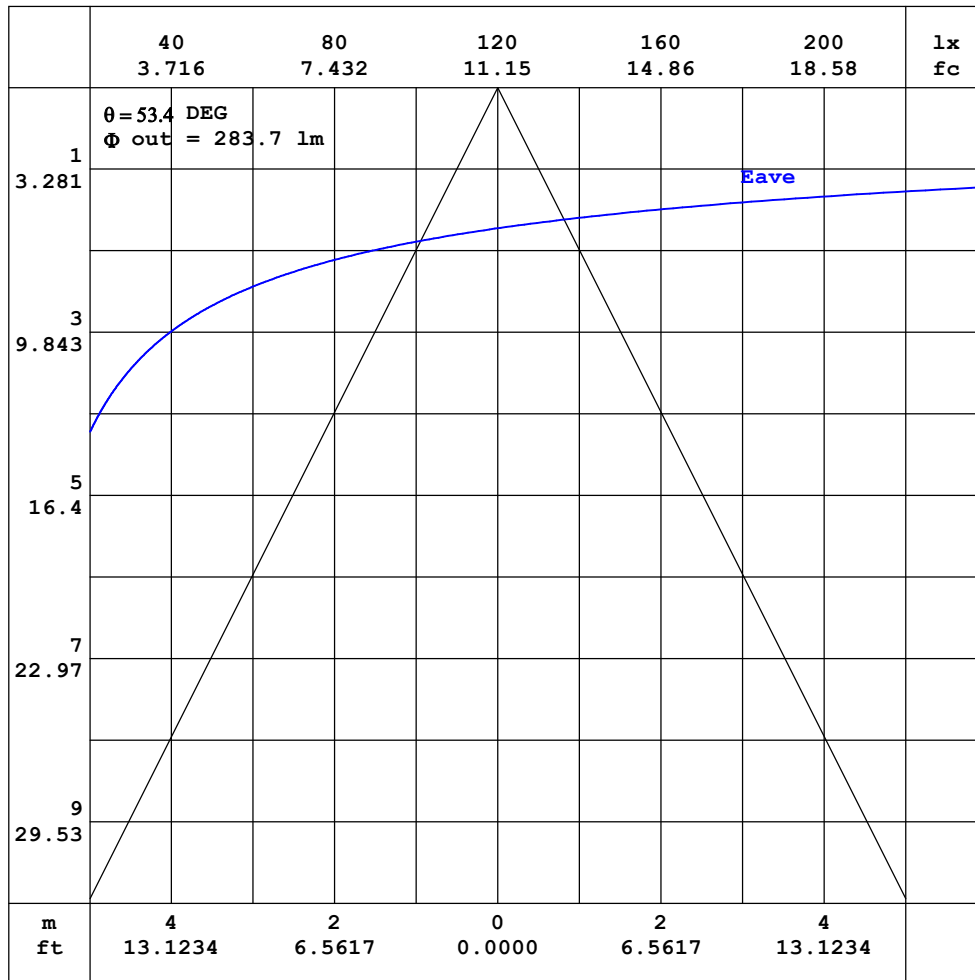


C Range: 0 - 180DEG
 C Interval: 15.0DEG
 Test Speed: HIGH
 Temperature:20°C
 Operators:Elaine
 Test Date:10 November 2023

γ Range: 0 - 90DEG
 γ Interval: 2.0DEG
 Test System:EVERFINE GO-SPEX500_V1 SYSTEM V2.00.473
 Humidity:65.0%
 Test Distance:3.100m [K=1.0000]
 Remarks: AGL-560-30X60
 6W / 3000K
 24V DC

AAI CURVES

Test:U:23.802V I:0.2234A P:5.3173W PF:1.0000 Freq:0Hz		
UTHDi:0.00% ITHDi:0.00% KDisp:0 Lamp Flux:562.932x1 lm		
NAME: AGL-560-30X60	TYPE: MR16 LAMP	WEIGHT:
SPEC.: AGL-560-30X60	DIM.:	SERIAL No.: -
MFR.: AQUALUX	SUR.:	Shielding Angle:



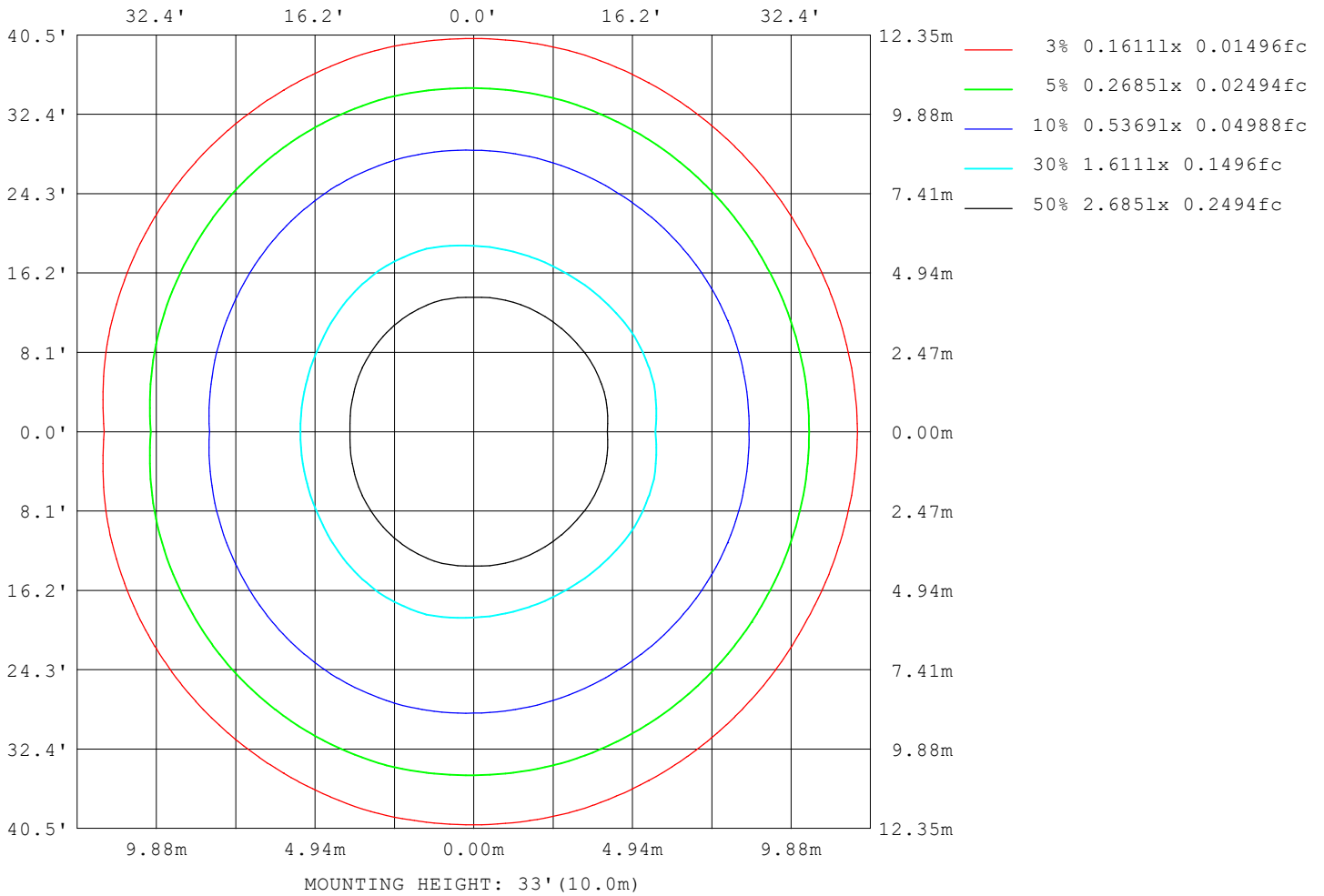
Note: The Curves indicate the illuminated area and the average illumination when the luminaire is at different distance.

C Range: 0 - 180DEG
 C Interval: 15.0DEG
 Test Speed: HIGH
 Temperature: 20°C
 Operators: Elaine
 Test Date: 10 November 2023

γ Range: 0 - 90DEG
 γ Interval: 2.0DEG
 Test System: EVERFINE GO-SPEX500_V1 SYSTEM V2.00.473
 Humidity: 65.0%
 Test Distance: 3.100m [K=1.0000]
 Remarks: AGL-560-30X60
 6W / 3000K
 24V DC

ISOLUX DIAGRAM

Test:U:23.802V I:0.2234A P:5.3173W PF:1.0000 Freq:0Hz UTHDi:0.00% ITHDi:0.00% KDisp:0 Lamp Flux:562.932x1 lm		
NAME: AGL-560-30X60	TYPE: MR16 LAMP	WEIGHT:
SPEC.: AGL-560-30X60	DIM.:	SERIAL No.: -
MFR.: AQUALUX	SUR.:	Shielding Angle:



C Range: 0 - 180DEG
 C Interval: 15.0DEG
 Test Speed: HIGH
 Temperature: 20°C
 Operators: Elaine
 Test Date: 10 November 2023

γ Range: 0 - 90DEG
 γ Interval: 2.0DEG
 Test System: EVERFINE GO-SPEX500_V1 SYSTEM V2.00.473
 Humidity: 65.0%
 Test Distance: 3.100m [K=1.0000]
 Remarks: AGL-560-30X60
 6W / 3000K
 24V DC

LED Avg.L Report

Test:U:23.802V I:0.2234A P:5.3173W PF:1.0000 Freq:0Hz UTHDi:0.00% ITHDi:0.00% KDisp:0 Lamp Flux:562.932x1 lm		
NAME: AGL-560-30X60	TYPE: MR16 LAMP	WEIGHT:
SPEC.: AGL-560-30X60	DIM.:	SERIAL No.: -
MFR.: AQUALUX	SUR.:	Shielding Angle:

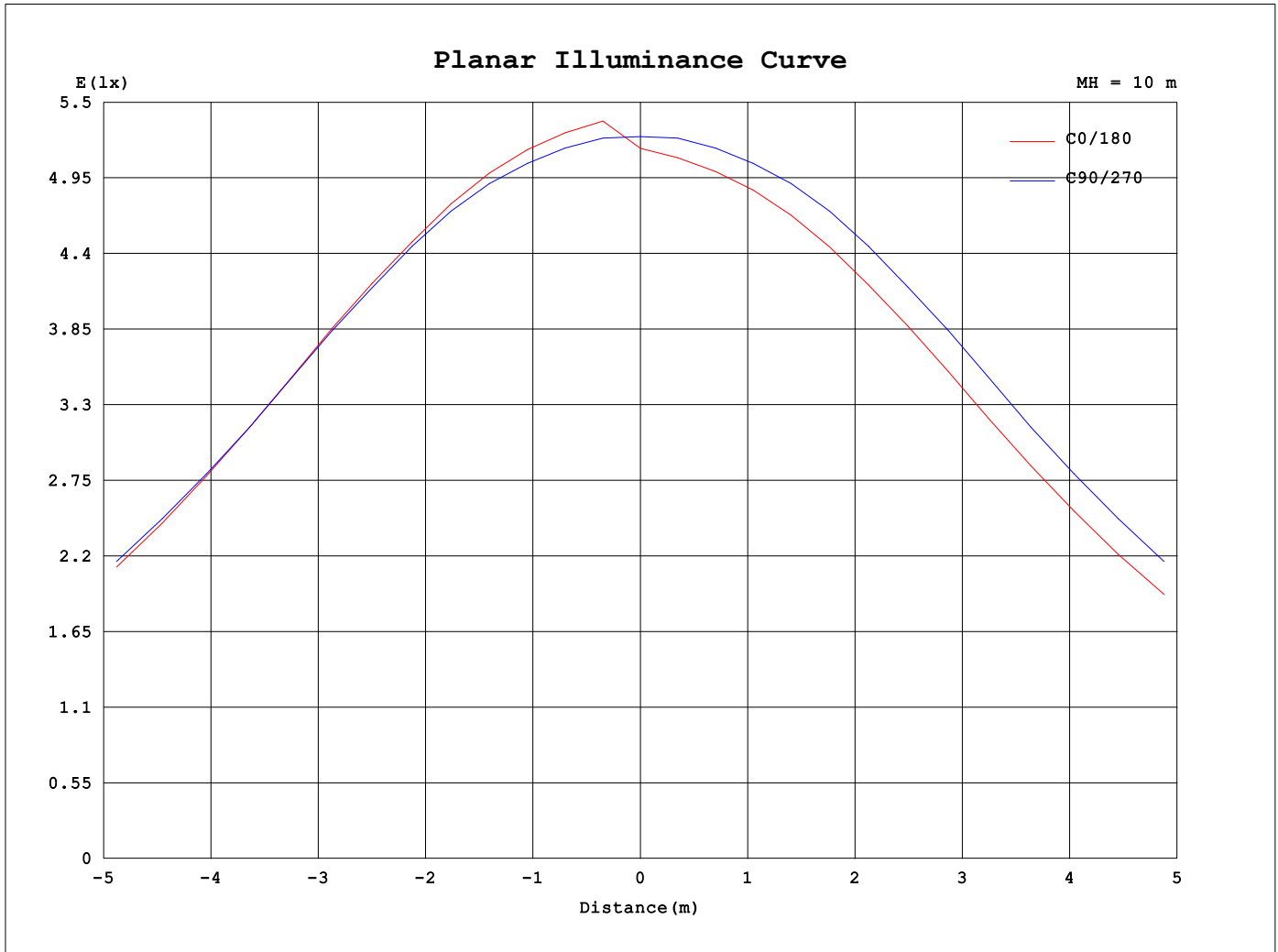
AvgL	cd/m2
L_0~180 (65) av	31542
L_0~180 (75) av	16727
L_0~180 (85) av	17817
L_90~270 (65) av	38290
L_90~270 (75) av	20760
L_90~270 (85) av	26881
L_45 (65) av	35213
L_45 (75) av	19056
L_45 (85) av	24355

Standard: GB/T 29293-2012

C Range: 0 - 180DEG
 C Interval: 15.0DEG
 Test Speed: HIGH
 Temperature:20°C
 Operators:Elaine
 Test Date:10 November 2023

γ Range: 0 - 90DEG
 γ Interval: 2.0DEG
 Test System:EVERFINE GO-SPEX500_V1 SYSTEM V2.00.473
 Humidity:65.0%
 Test Distance:3.100m [K=1.0000]
 Remarks: AGL-560-30X60
 6W / 3000K
 24V DC

Planar Illuminance Curve



C Range: 0 - 180DEG
 C Interval: 15.0DEG
 Test Speed: HIGH
 Temperature: 20°C
 Operators: Elaine
 Test Date: 10 November 2023

γ Range: 0 - 90DEG
 γ Interval: 2.0DEG
 Test System: EVERFINE GO-SPEX500_V1 SYSTEM V2.00.473
 Humidity: 65.0%
 Test Distance: 3.100m [K=1.0000]
 Remarks: AGL-560-30X60
 6W / 3000K
 24V DC

